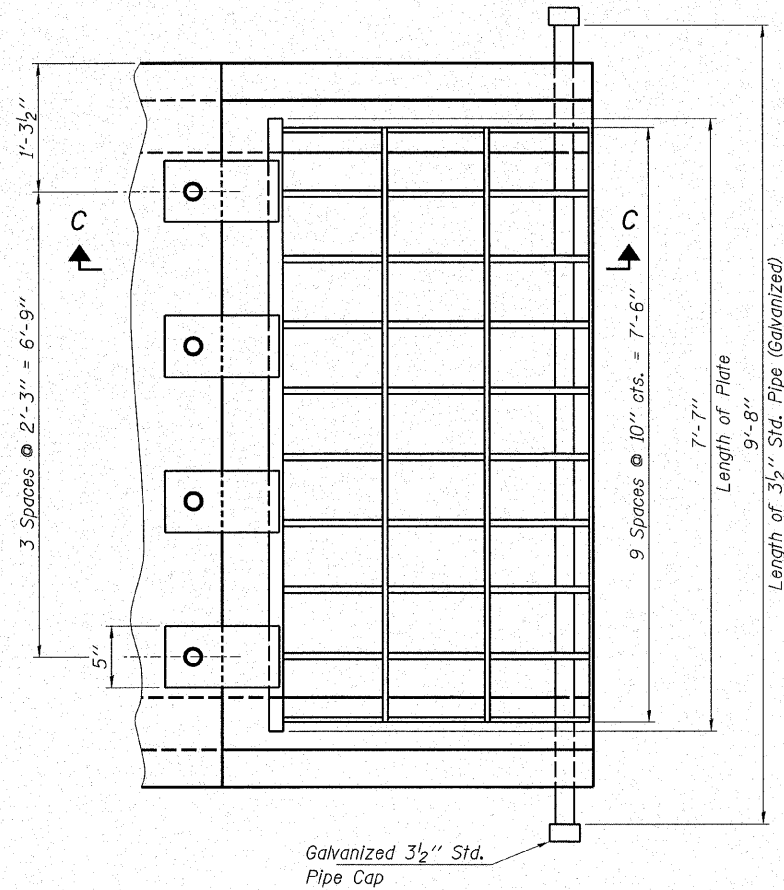
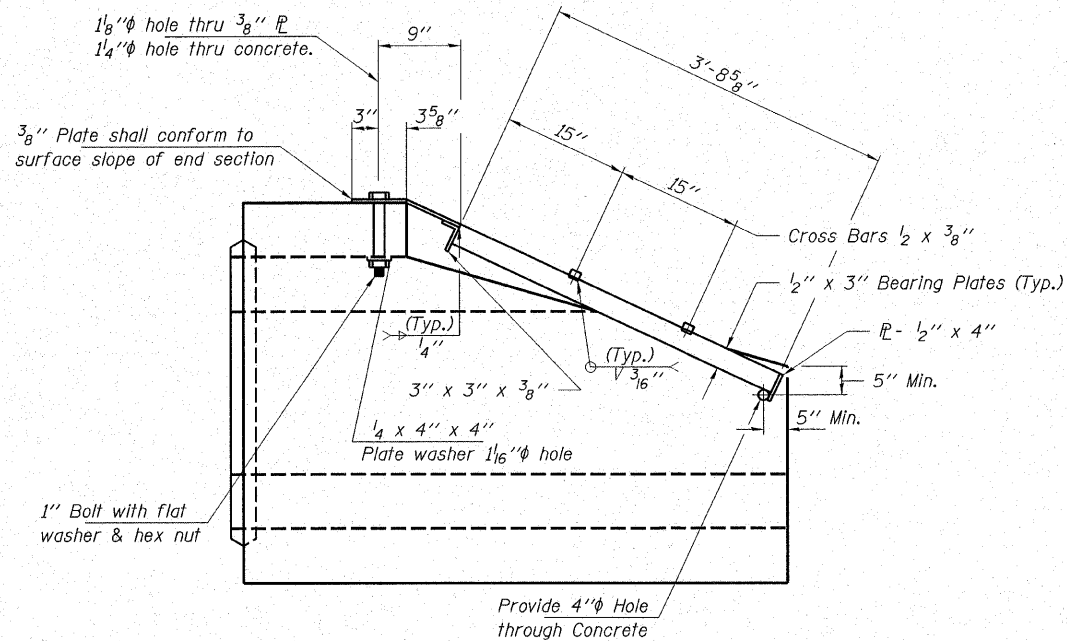


ROUTE NO.	SECTION	COUNTY	SHEET NO.	SHEET
C.H. 15	96-00044-00-BR	KENDALL	55	55
FED. ROAD DIST. NO.	ILLINOIS	FED. AID PROJECT		

CONTRACT NO. 87325



PLAN



SECTION C-C

GENERAL NOTES

1. The cost of fabrication and installation of the grating shall be included in the cost of Box Culvert End Section.
2. Structural Steel Shapes and Plates shall be in accordance with Article 1006.04 of the Standard Specifications. Galvanized Steel Pipe shall be in accordance with Article 1006.27 (b) of the Standard Specifications.
3. Bolts, Nuts, and Washers shall be in accordance with Article 1006.27 (f) of the Standard Specifications. All Fabrication shall be completed and ready for assembly before galvanizing.
4. Holes in the Precast Concrete Box Culvert End Section shall be cored to the diameter noted. If cone-out on the other end of the hole occurs, the hole shall be filled with Grout to correct the diameter of the hole.

HAMPTON, LENZINI & RENWICK, INC.
 CIVIL & STRUCTURAL ENGINEERS

3085 STEVENSON DRIVE, SUITE 201
 SPRINGFIELD, ILLINOIS 62703
 (217) 546-3400

HLR

ELGIN • SPRINGFIELD

PROJECT NUMBER: 12-06-0030-1 DATE: 03/12/07
 DESIGNED: J.W.F. CHECKED: S.W.M. DRAWN: D.B.

**GRATING FOR 8' X 3' PRECAST
 BOX CULVERT END SECTION**
 SECTION 96-00044-00-BR
 FOX RIVER DRIVE / C.H. 15
 KENDALL COUNTY
 STATION 39+20