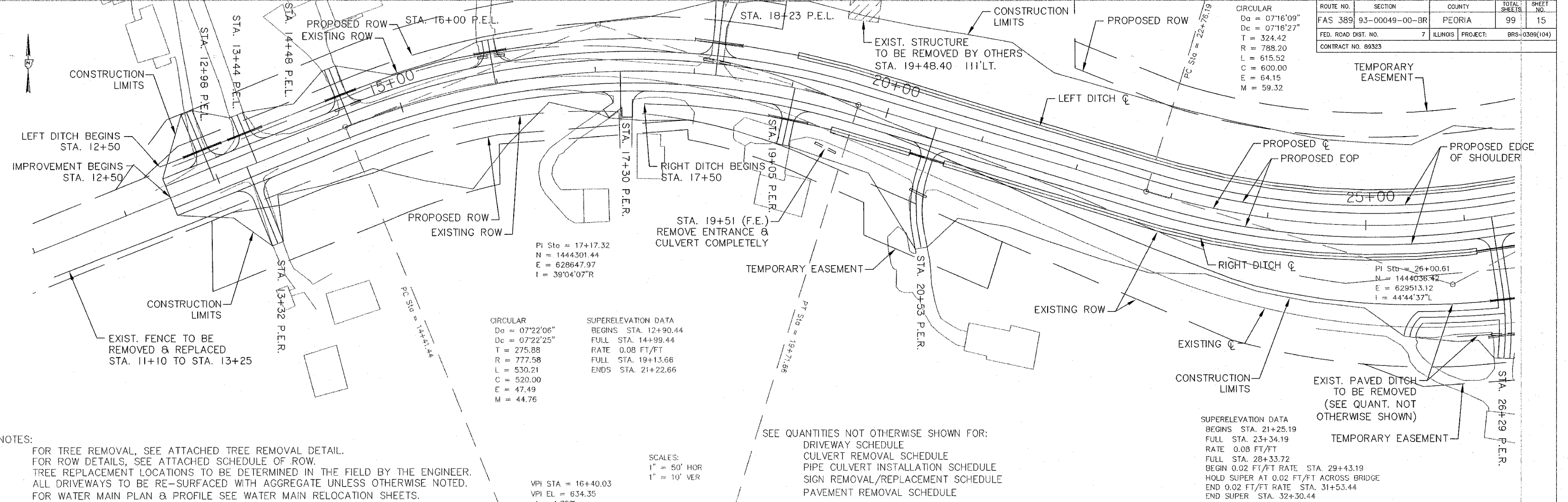


ROUTE NO.	SECTION	COUNTY	TOTAL SHEETS	SHEET NO.
FAS 389	93-00049-00-BR	PEORIA	99	15
FED. ROAD DIST. NO.	7	ILLINOIS	PROJECT:	BRS-0399(104)
CONTRACT NO. 69323				

CIRCULAR
 D_a = 07'16"09"
 D_c = 07'16"27"
 T = 324.42
 R = 788.20
 L = 615.52
 C = 600.00
 E = 64.15
 M = 59.32



PI Sta = 17+17.32
 N = 1444301.44
 E = 628647.97
 I = 39°04'07"R

CIRCULAR
 D_a = 07'22'06"
 D_c = 07'22'25"
 T = 275.88
 R = 777.58
 L = 530.21
 C = 520.00
 E = 47.49
 M = 44.76

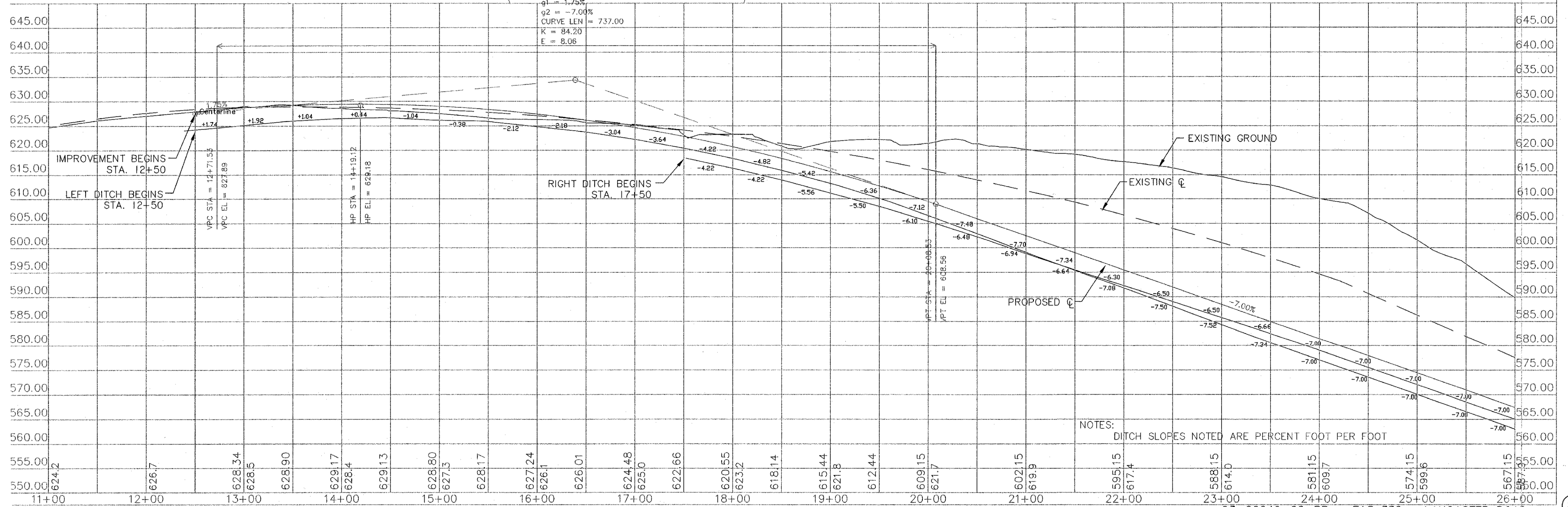
SUPERELEVATION DATA
 BEGINS STA. 12+90.44
 FULL STA. 14+99.44
 RATE 0.08 FT/FT
 FULL STA. 19+13.66
 ENDS STA. 21+22.66

NOTES:
 FOR TREE REMOVAL, SEE ATTACHED TREE REMOVAL DETAIL.
 FOR ROW DETAILS, SEE ATTACHED SCHEDULE OF ROW.
 TREE REPLACEMENT LOCATIONS TO BE DETERMINED IN THE FIELD BY THE ENGINEER.
 ALL DRIVEWAYS TO BE RE-SURFACED WITH AGGREGATE UNLESS OTHERWISE NOTED.
 FOR WATER MAIN PLAN & PROFILE SEE WATER MAIN RELOCATION SHEETS.

SCALES:
 1" = 50' HOR
 1" = 10' VER

SEE QUANTITIES NOT OTHERWISE SHOWN FOR:
 DRIVEWAY SCHEDULE
 CULVERT REMOVAL SCHEDULE
 PIPE CULVERT INSTALLATION SCHEDULE
 SIGN REMOVAL/REPLACEMENT SCHEDULE
 PAVEMENT REMOVAL SCHEDULE

SUPERELEVATION DATA
 BEGINS STA. 21+25.19
 FULL STA. 23+34.19
 RATE 0.08 FT/FT
 FULL STA. 28+33.72
 BEGIN 0.02 FT/FT RATE STA. 29+43.19
 HOLD SUPER AT 0.02 FT/FT ACROSS BRIDGE
 END 0.02 FT/FT RATE STA. 31+53.44
 END SUPER STA. 32+30.44



NOTES:
 DITCH SLOPES NOTED ARE PERCENT FOOT PER FOOT