

PI Sta = 26+00.61  
 N = 1444036.42  
 E = 629513.12  
 I = 44°44'37" L

CIRCULAR  
 D<sub>a</sub> = 07°16'09"  
 D<sub>c</sub> = 07°16'27"  
 T = 324.42  
 L = 788.20  
 R = 615.52  
 C = 600.00  
 E = 64.15  
 M = 59.32

SUPERELEVATION DATA  
 BEGINS STA. 21+25.19  
 FULL STA. 23+34.19  
 RATE 0.08 FT/FT  
 FULL STA. 28+33.72  
 BEGIN 0.02 FT/FT RATE STA. 29+43.19  
 HOLD SUPER AT 0.02 FT/FT ACROSS BRIDGE  
 END 0.02 FT/FT RATE STA. 31+53.44  
 END SUPER STA. 32+30.44

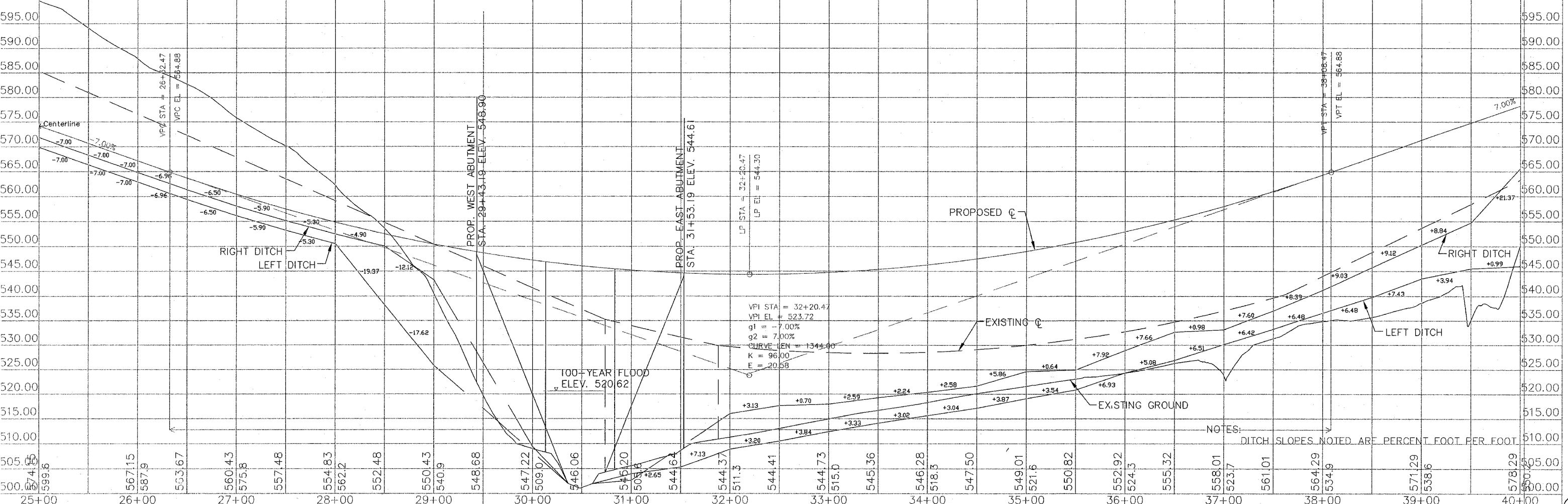
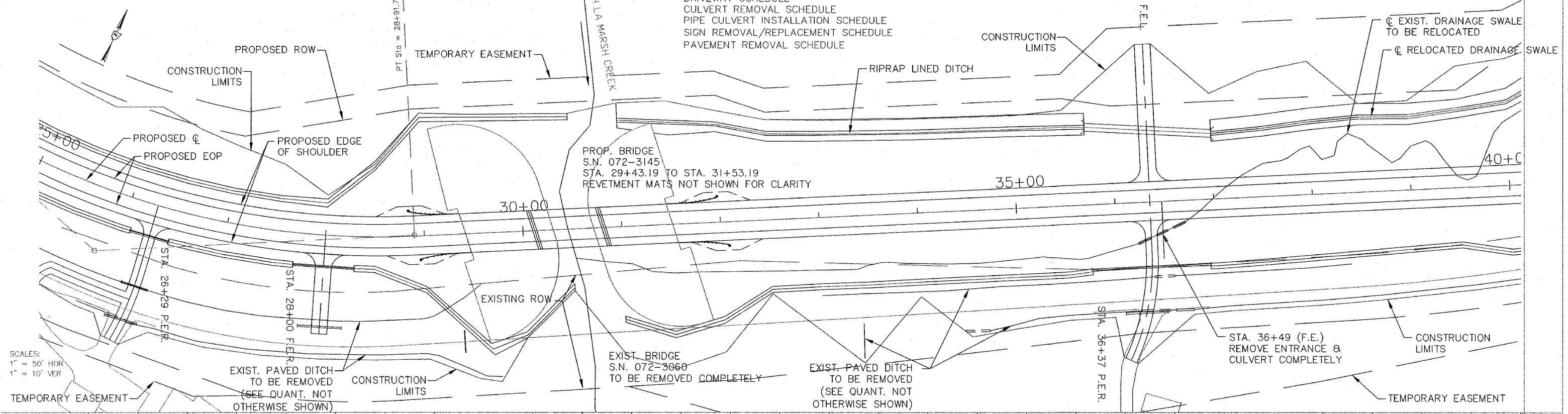
NOTES:

FOR TREE REMOVAL, SEE ATTACHED TREE REMOVAL DETAIL.  
 FOR ROW DETAILS, SEE ATTACHED SCHEDULE OF ROW.  
 TREE REPLACEMENT LOCATIONS TO BE DETERMINED IN THE FIELD BY THE ENGINEER.  
 ALL DRIVEWAYS TO BE RE-SURFACED WITH AGGREGATE UNLESS OTHERWISE NOTED.

SEE QUANTITIES NOT OTHERWISE SHOWN FOR:

- DRIVEWAY SCHEDULE
- CULVERT REMOVAL SCHEDULE
- PIPE CULVERT INSTALLATION SCHEDULE
- SIGN REMOVAL/REPLACEMENT SCHEDULE
- PAVEMENT REMOVAL SCHEDULE

ROUTE NO.	SECTION	COUNTY	TOTAL SHEETS	SHEET NO.
FAS 389	93-00049-00-BR	PEORIA	99	16
FED. ROAD DIST. NO.	7	ILLINOIS PROJECT:	BR-0389(104)	
CONTRACT NO. 89323				



NOTES: DITCH SLOPES NOTED ARE PERCENT FOOT PER FOOT