
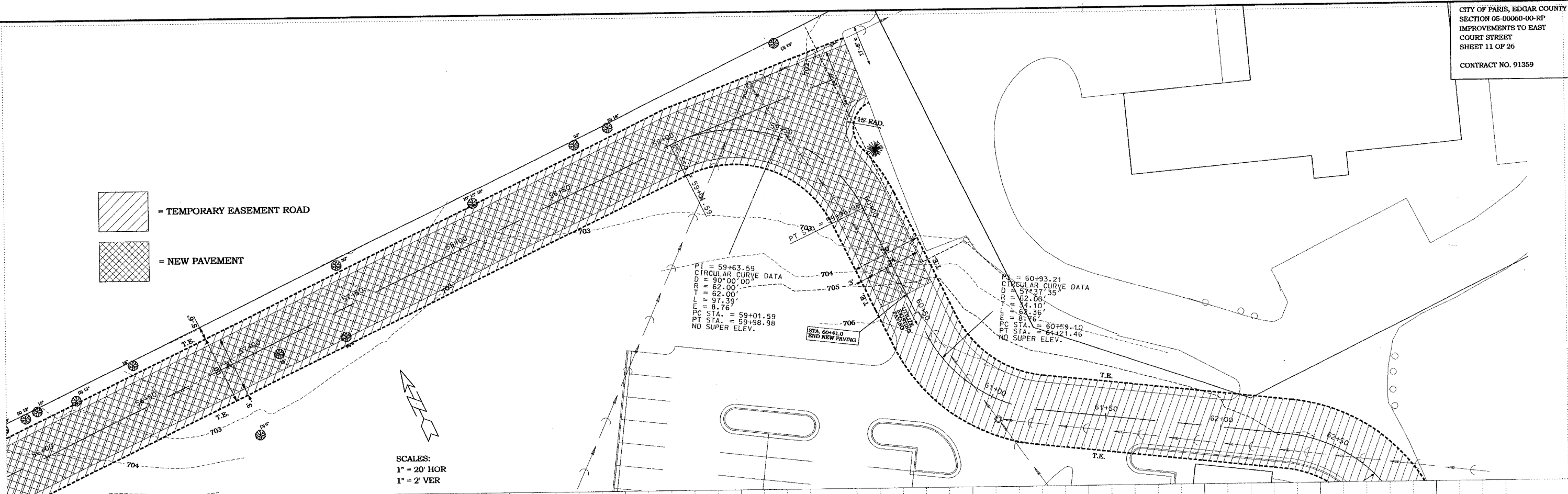
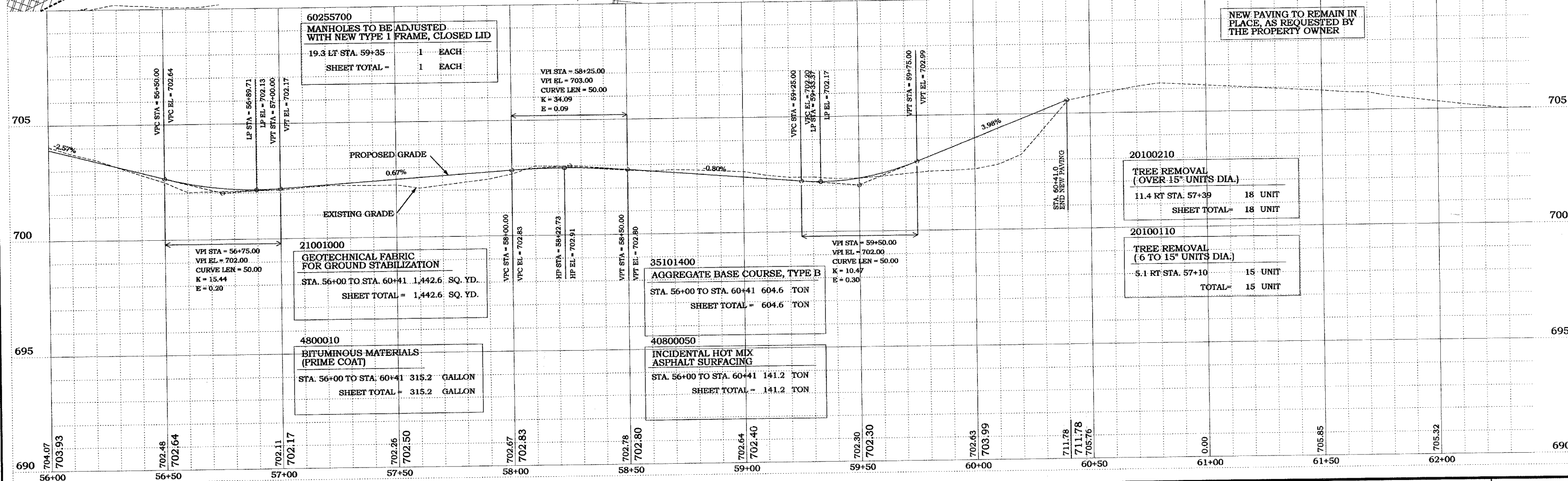
 = TEMPORARY EASEMENT ROAD  
 = NEW PAVEMENT



SCALES:  
1" = 20' HOR  
1" = 2' VER



NEW PAVING TO REMAIN IN PLACE, AS REQUESTED BY THE PROPERTY OWNER

File Names c:\bentley\projeo\p-xxx\PCp011\xx.dgn

**FRANCIS ASSOCIATES**  
CONSULTING ENGINEERS  
LAND SURVEYORS  
330 NORTH CENTRAL AVENUE  
PARIS, ILLINOIS 61944  
PH. (217) 465-5306  
PROFESSIONAL DESIGN FIRM #184-001406




PLAN: HOR. 1"=20'	VERT. 1"=5'
REVISIONS:	DATE:

FRANCIS ASSOC.  
FILE NO.  
**P-356**

PLAN AND PROFILE - TEMPORARY EASEMENT BEHIND HOSPITAL  
PLANS FOR PROPOSED IMPROVEMENTS TO EAST COURT STREET F.A.U. ROUTE 7562  
CITY OF PARIS, ILLINOIS, EDGAR COUNTY