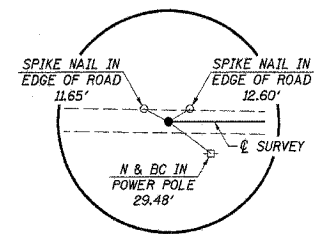
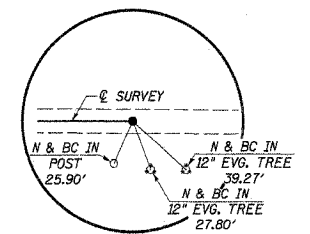


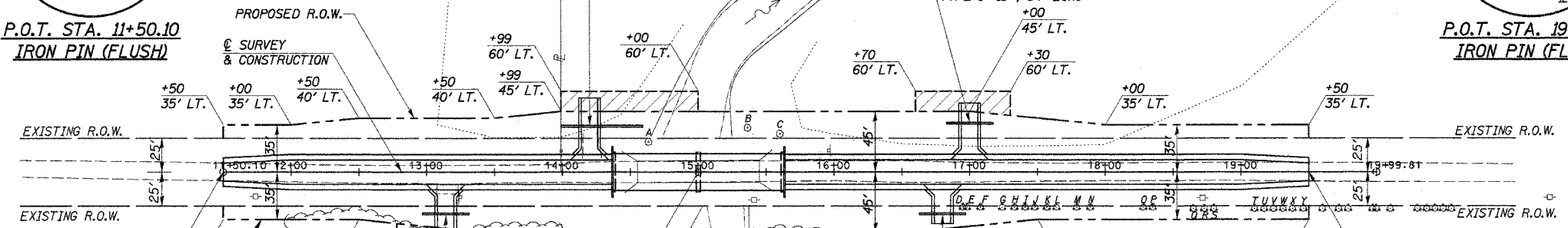
ROUTE	SECTION	COUNTY	TOTAL SHEETS	SHEET NO.
T.R. 60	D6-05132 -00-BR	EDGAR	15	3
STA. 11+50.00 TO STA. 19+99.81		EMBARRASS		
FED. ROAD DIST. NO.		ILLINOIS		
CONTRACT NO. 91374				



P.O.T. STA. 11+50.10
IRON PIN (FLUSH)



P.O.T. STA. 19+99.81
IRON PIN (FLUSH)



CHANNEL EXCAVATION

THE CHANNEL SHALL BE EXCAVATED AS SHOWN WITHIN THE LIMITS OF THE PROPOSED STRUCTURE THEN TAPER TO THE EXISTING CHANNEL AT THE R.O.W. LINES. SUITABLE EXCAVATED MATERIAL TO BE USED IN THE EMBANKMENT AS DIRECTED BY THE ENGINEER.

CHANNEL EXCAVATION = 240 CU. YD.

RT. STA. 13+14 F.E.
PIPE CULVERTS, CLASS D,
TYPE 1 15", 34' LONG

LLOYD & FRANCES WOOD TRUST

PIPES TO BE REMOVED

RT. STA. 13+14, F.E.
PIPE CULVERT WITH CONCRETE HEADWALLS
(COST INCIDENTAL TO "EARTH EXCAVATION".)

LLOYD & FRANCES WOOD TRUST

ENTRANCES TO BE BUILT

RT. STA. 13+14, F.E. -15.0%, 16' ROADBED
LT. STA. 14+20, F.E. -15.0%, 16' ROADBED
RT. STA. 16+80, F.E. -10.0%, 16' ROADBED
LT. STA. 17+00, F.E. -15.0%, 16' ROADBED
QUANTITIES INCLUDED IN THOSE LISTED

EXISTING STRUCTURE NO. 023-4406

7-SPAN STEEL I-BEAM BRIDGE WITH TIMBER DECK ON CLOSED TIMBER BACKED ABUTMENTS AND WINGS ON TIMBER PILES
BK-BK. 90'-6", 0'-0. 16'-0", 0° SKEW.

REMOVAL OF EXISTING STRUCTURES = 1 EACH

UTILITIES

ENESTAR POWER CORP.
TIM HADDIX 217-463-4145 EXT. 617

VERIZON NORTH, INC.
JONNA FRICKE 309-663-3422



DATE	12/06/08
BY	...
SCALE	...
PLANNING	...
DESIGN	...
CHECKED	...
APPROVED	...
REVISIONS	...
PLAN & PROFILE	...

