

T.R. RTE.	SECTION	COUNTY	TOTAL SHEETS	SHEET NO.
151	***	CHRISTIAN	20	1

*** 93-08107-00-BR

INDEX OF SHEETS

SHEET NO.	DESCRIPTION
1	COVER SHEET
2	SUMMARY OF QUANTITIES, SCHEDULE OF QUANTITIES AND GENERAL NOTES
3	TYPICAL SECTIONS AND DETAILS
4	ROADWAY PLAN AND PROFILE
5 - 13	BRIDGE PLANS
14 - 20	CROSS SECTIONS

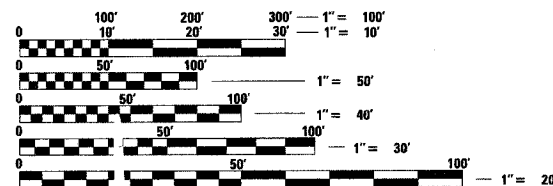
STANDARDS

000001-04	STANDARD SYMBOLS, ABBREVIATIONS AND PATTERNS
280001-03	TEMPORARY EROSION CONTROL SYSTEMS
515001-02	NAME PLATE FOR BRIDGE
635006-02	REFLECTOR AND TERMINAL MARKER PLACEMENT
702001-06	TRAFFIC CONTROL DEVICES
BLR 21-6	TYPICAL APPLICATION OF TRAFFIC CONTROL DEVICES FOR CONSTRUCTION ON RURAL LOCAL HIGHWAYS

UTILITIES

ILLINOIS CONSOLIDATED TELEPHONE LITCHFIELD, ILLINOIS 62056

SHELBY ELECTRIC COOPERATIVE SHELBYVILLE, ILLINOIS 62565



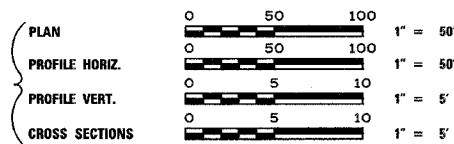
FULL SIZE PLANS HAVE BEEN PREPARED USING STANDARD ENGINEERING SCALES. REDUCED SIZED PLANS WILL NOT CONFORM TO STANDARD SCALES. IN MAKING MEASUREMENTS ON REDUCED PLANS, THE ABOVE SCALES MAY BE USED.

J.U.L.I.E. JOINT UTILITY LOCATION INFORMATION FOR EXCAVATION 1-800-892-123

CONTRACT NO. 93427

STATE OF ILLINOIS DEPARTMENT OF TRANSPORTATION DIVISION OF HIGHWAYS PLANS FOR

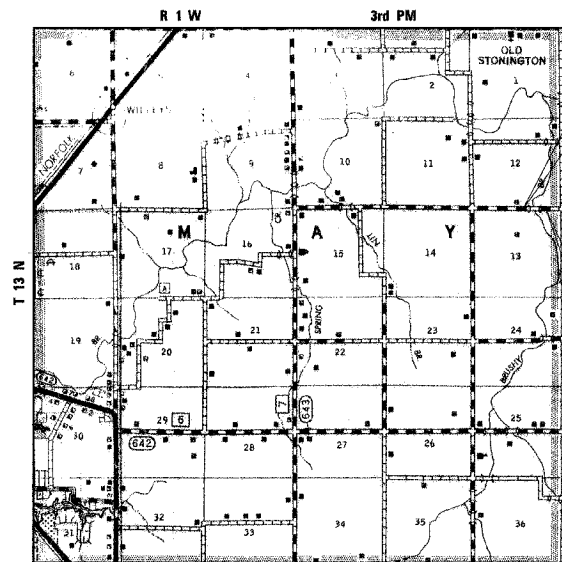
PROPOSED LOCAL AGENCY IMPROVEMENTS BRIDGE REPLACEMENT & REHABILITATION PROGRAM



TR ROUTE 151 SECTION 93-08107-00-BR CHRISTIAN COUNTY MAY ROAD DISTRICT PROJECT BROS-021(69) JOB NUMBER C-96-246-95



LOCATION OF SECTION INDICATED THIS: [Symbol]



LOCATION MAP

NET LENGTH OF PROJECT = 850.00 FEET = 0.161 MILES

DESIGN DESIGNATION

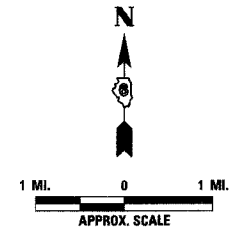
LOCAL ROAD: ADT < 150 DESIGN SPEED: 30 MPH

STA. 15+50.00 BEGIN IMPROVEMENTS SECTION 93-08107-00-BR

EXISTING STRUCTURE NO. 011-3111 SINGLE SPAN REINFORCED CONCRETE DECK WITH CONCRETE PARAPETS ON CLOSED REINFORCED CONCRETE ABUTMENTS. 63'-9" BACK TO BACK ABUTMENTS. ±21'-0" OUT TO OUT DECK.

PROPOSED STRUCTURE NO. 011-3405 TWO SPAN PPC DECK BEAM BRIDGE ON REINFORCED CONCRETE SPILL THRU ABUTMENTS AND CONCRETE ENCASED PILE BENT PIER. 107'-0" BACK TO BACK ABUTMENTS, 24'-0" OUT TO OUT DECK

STA. 24+00.00 END IMPROVEMENTS SECTION 93-08107-00-BR



APPROVED	<i>Chris D. Avey</i>	8/15/06	20	06
APPROVED	<i>Gay Barlow</i>	8/15/06	20	06
PASSED	<i>July 30</i>		20	06
PASSED	<i>October 3</i>		20	06
Releasing For Bid Based on Limited Review	<i>Oct 3 Christine M. Reed</i>		20	06

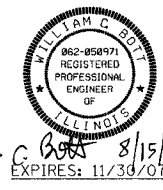
PRINTED BY THE AUTHORITY OF THE STATE OF ILLINOIS

PLANS PREPARED BY:

GREENE & BRADFORD, INC. REGISTERED PROFESSIONAL ENGINEERS OF ILLINOIS

COMPUTER FILE NO. 05228COV PROJECT 05228 6/15/06 - MDS

REVISIONS	NAME	DATE



William C. Reed 8/15/08 EXPIRES: 11/30/07