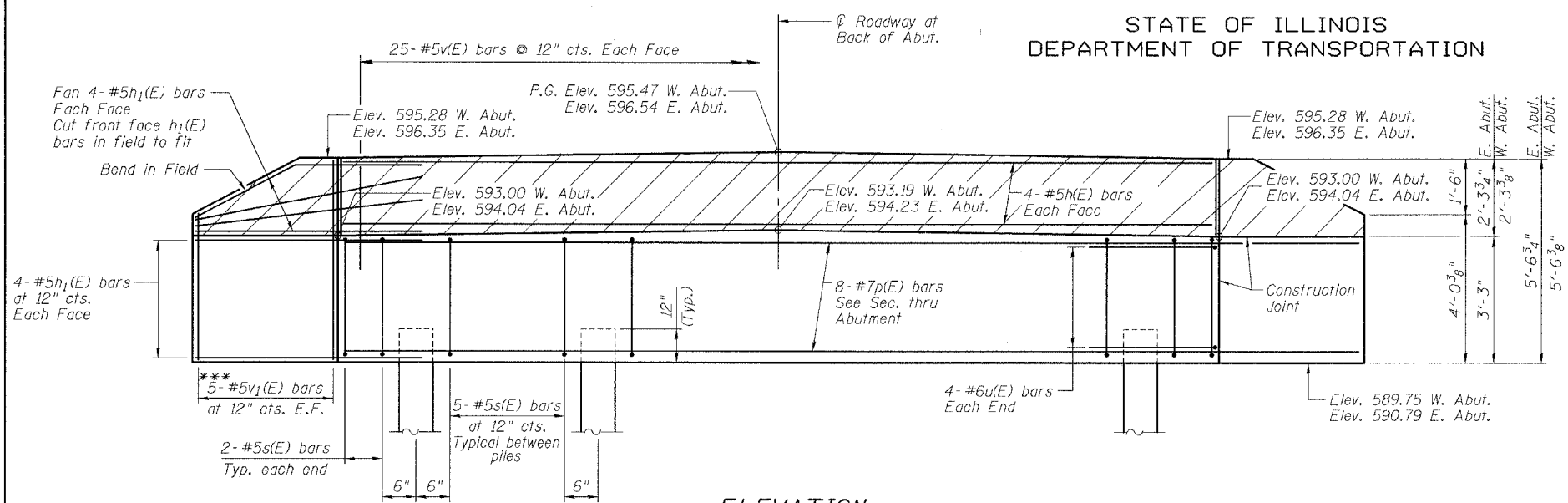


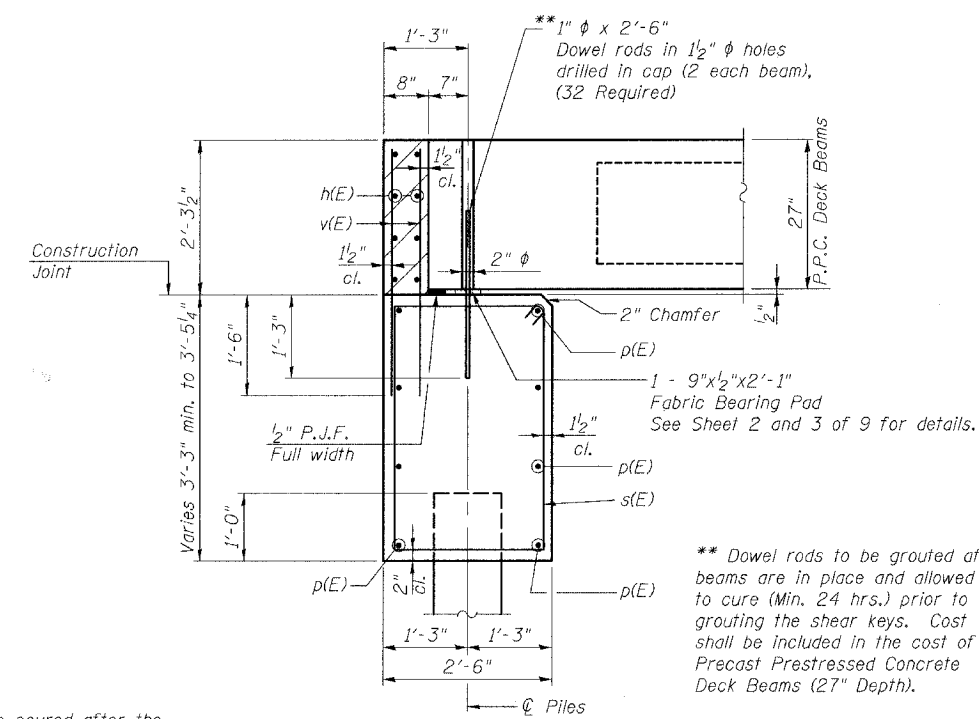
| | | | | |
|---------------------|----------|-------------------|-----------|-----------|
| ROUTE NO. | SECTION | COUNTY | SHEET NO. | SHEET NO. |
| TR 151 | * | CHRISTIAN | 20 | 9 |
| FED. ROAD DIST. NO. | ILLINOIS | FED. AID PROJECT- | | |

* 93-08107-00-BR

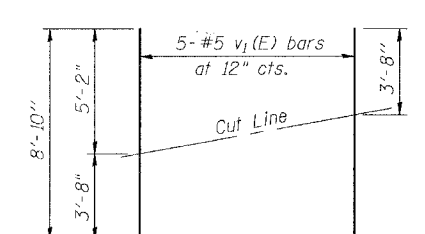
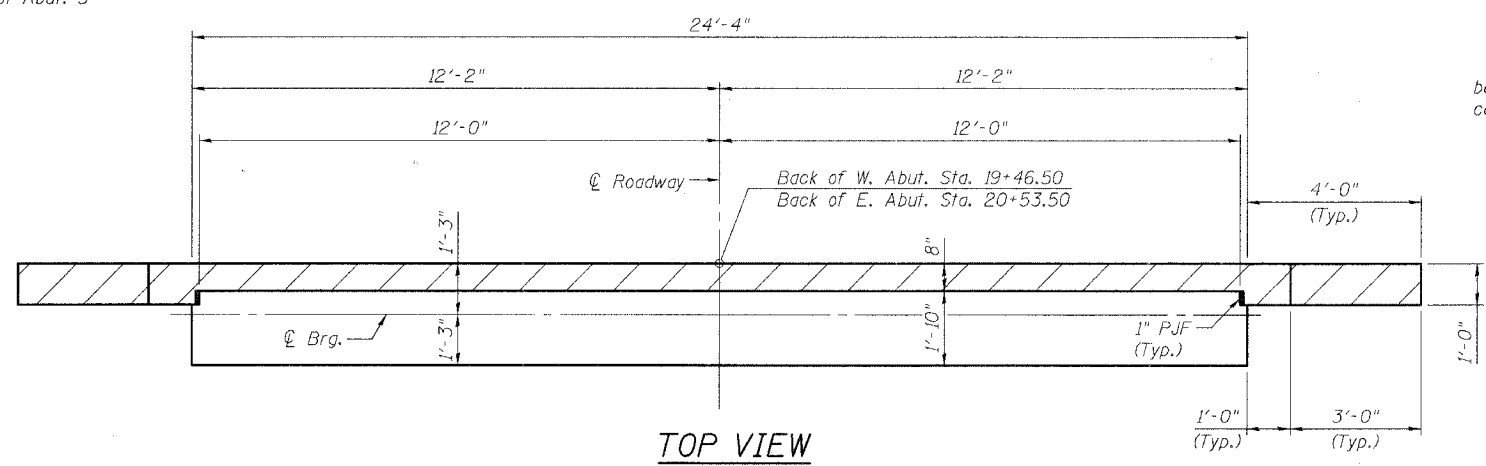
STATE OF ILLINOIS
DEPARTMENT OF TRANSPORTATION



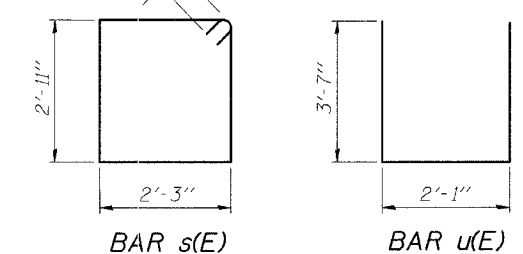
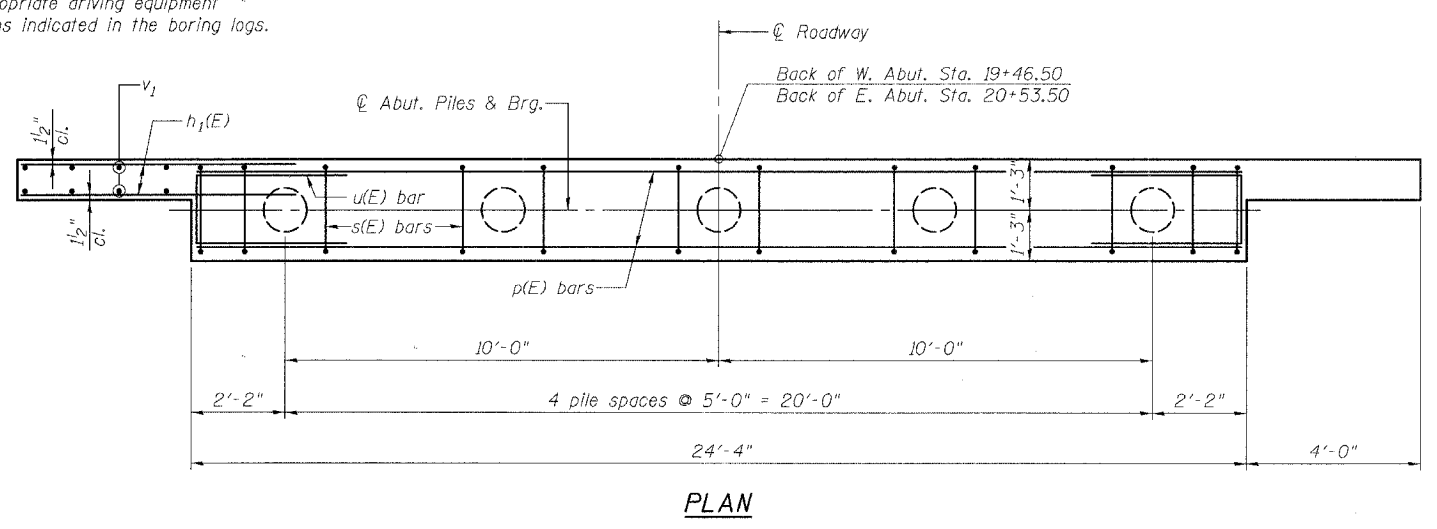
PILE DATA
Type: 12"φ Metal Shell Piles (1/4" shell)
Capacity: 35 Tons - West Abut.
30 Tons - East Abut.
Est. Length: 38' - West Abut.
18' - East Abut.
No. Required: West Abut. 4+1 Test Pile
East Abut. 5



NOTES
The hatched area shall be poured after the beams are in place. The backwall shall be cast against the beams.
Space reinforcement bars in cap to miss dowel rods.



Note:
Hard driving may be encountered during pile driving operations. The Contractor shall provide the appropriate driving equipment for soil conditions indicated in the boring logs.



BILL OF MATERIAL TWO ABUTMENTS

| Bar | No. | Size | Length | Shape |
|--------------------|-----|------|--------|-------|
| h(E) | 16 | #5 | 24'-0" | — |
| h ₁ (E) | 64 | #5 | 6'-3" | — |
| p(E) | 16 | #7 | 24'-0" | — |
| s(E) | 48 | #5 | 11'-3" | □ |
| u(E) | 16 | #6 | 9'-3" | □ |
| v(E) | 100 | #5 | 3'-8" | — |
| v ₁ (E) | 20 | #5 | 8'-10" | — |

| | | |
|----------------------------------|---------|------|
| Concrete Structures | Cu. Yd. | 20.6 |
| Reinforcement Bars, Epoxy Coated | Pound | 2950 |
| Furnishing Metal Shell Piles 12" | Foot | 242 |
| Structure Excavation | Cu. Yd. | 19 |
| Driving Piles | Foot | 242 |
| Test Pile Metal Shells | Each | 1 |

Reinforcement bars designated (E) shall be epoxy coated

ILLINOIS DEPARTMENT OF TRANSPORTATION

ABUTMENTS
TR 151 OVER BRUSHY BRANCH CREEK
SECTION 93-08107-00-BR
CHRISTIAN COUNTY
STATION 20+00.00
S.N. 011-3405

| REVISIONS | |
|-----------|------|
| NAME | DATE |
| | |
| | |
| | |
| | |

SCALE: VERT. HORIZ.
DATE: 4/8/06
DRAWN BY: LANDREY
DESIGNED BY: MATHUR
CHECKED BY: TRELLO

GREENE & BRADFORD, INC.
OF SPRINGFIELD
REGISTERED PROFESSIONAL ENGINEER
NO. 001-001-001
PROFESSIONAL SEAL AND EXPIRES 12/31/2018
021 192 8844, 618 752 4427, FAX 618 752 4428
www.greenelandbradford.com

COMPUTER FILE NO.
SN0113405t05
PROJECT 05228
6/27/06-MML

FILE NAME = J:\05228\DRAWINGS\SN0113405\SN0113405.dgn
PLOT DATE = 06/27/06
PLOT TIME = 2:05:40 PM
OPERATOR = mtchellel