

RTE.	SECTION	COUNTY	TOTAL SHEETS	SHEET NO.
F.A.S.1746	*	MONTGOMERY	11	1

PROJECT *03-00122-00-BR
 CONTRACT NO. 93438

STATE OF ILLINOIS
 DEPARTMENT OF TRANSPORTATION
 PLANS FOR PROPOSED
 HIGHWAY BRIDGE PROGRAM
 PROJECT NO. BRS-1746(107)
 F.A.S. ROUTE 1746 (COFFEEN ROAD)
 OVER EAST FORK SHOAL CREEK
 SECTION 03-00122-00-BR
 MONTGOMERY COUNTY
 JOB NO. C-96-215-07

INDEX OF SHEETS

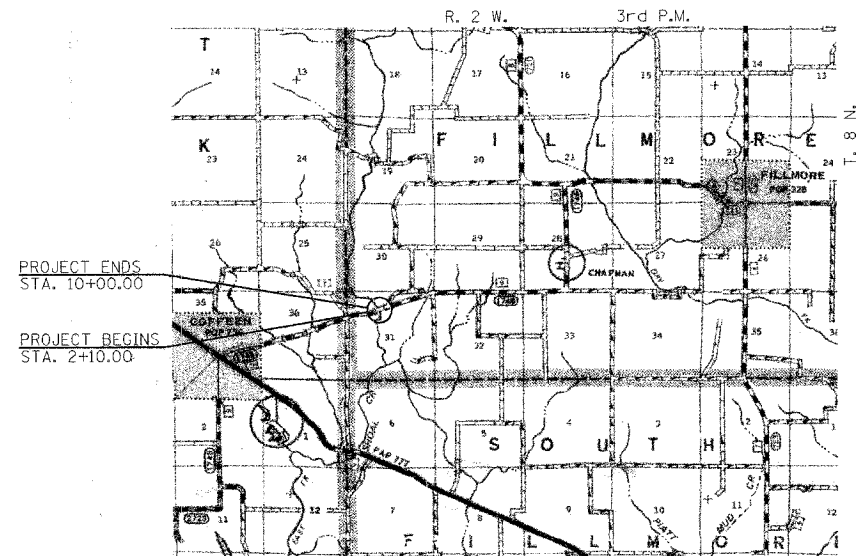
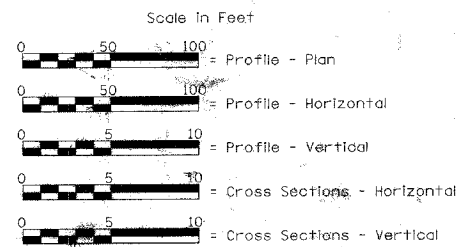
- 1 - TITLE SHEET
- 2 - SUMMARY OF QUANTITIES, SCHEDULES & TYPICAL SECTIONS
- 3 - PLAN & PROFILE
- 4 & 5 - GENERAL PLAN & ELEVATION
- 6 - SUPERSTRUCTURE
- 7 - RAILING
- 8 - ABUTMENTS
- 9 - PIERS
- 10 & 11 - CROSS SECTIONS

STANDARDS

- STANDARD 280001-03
- STANDARD 515001-02
- STANDARD 630001-07
- STANDARD 631026-03
- STANDARD 635006-02
- STANDARD 702001-06
- STANDARD BLR 21-6

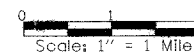
EXISTING STRUCTURE: SINGLE SPAN REINFORCED CONCRETE DECK ON STEEL STRINGERS SUPPORTED BY PRATT-THRU TRUSSES. CLOSED TIMBER ABUTMENTS AND WINGWALLS ON TIMBER PILES. ±104'-9" BK.-BK. ABUTMENTS, ±20'-10" FACE TO FACE OF CURBS. STEEL RAILINGS. ±50° SKEW RT. FORWARD. EXISTING S.N. 068-3018

PROPOSED STRUCTURE: THREE SPAN PRECAST PRESTRESSED CONCRETE DECK BEAMS (21") 158'-0" BK.-BK. ABUTMENTS, 50'-4 1/8" (SPAN 1 & 3), 50'-2 3/4" (SPAN 2). 28'-0" OUT.-OUT. DECK. OPEN CONCRETE ABUTMENTS, SOLID CONCRETE PIERS. TYPE S1 RAILING. 45° SKEW RT. FORWARD. PROPOSED S.N. 068-3352



LOCATION PLAN

Length of Section - 790.00 Feet = 0.150 Miles



Design Class : Major Collector (Non-Urban)
 Land Section - 31
 Land Quarter Section - N.W.

A.D.T. = 375 (2002)
 A.D.T. = 520 (2021)
 50 M.P.H. Design Speed



Christopher P. Kohlus 2/22/07
 EXPIRATION DATE: 11/30/07

APPROVED	2-16-07
<i>[Signature]</i> MONTGOMERY COUNTY ENGINEER	
PASSED	3-26-07
<i>[Signature]</i> DISTRICT ENGINEER LOCAL ROADS & STREETS	
PASSED	3-26-07
<i>[Signature]</i> DISTRICT ENGINEER CONSTRUCTION	
Requested For Bid Based on Limited Review	3-26-07
<i>[Signature]</i> DEPUTY DIRECTOR OF HIGHWAYS, REGION FOUR ENGINEER	

STATE OF ILLINOIS
DEPARTMENT OF TRANSPORTATION

FILE NAME: M03C215 REV. 2/29/07

TOLL FREE
 "JOINT UTILITY LOCATION INFORMATION FOR EXCAVATORS"
 (800) TELEPHONE NUMBER
 1-800-892-0123

CONTRACT NO. 93438