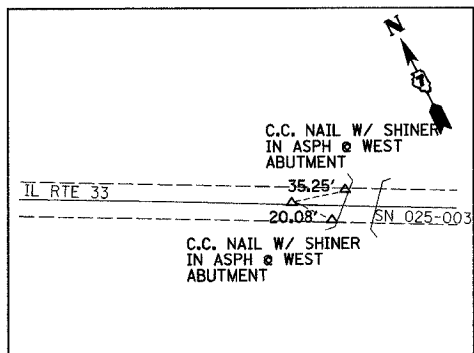
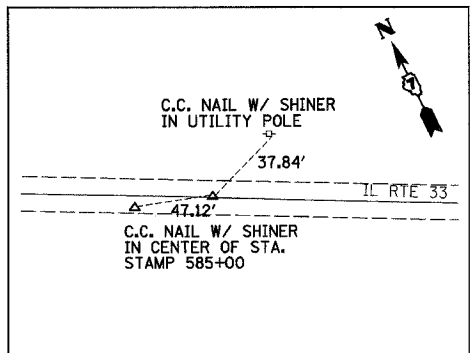


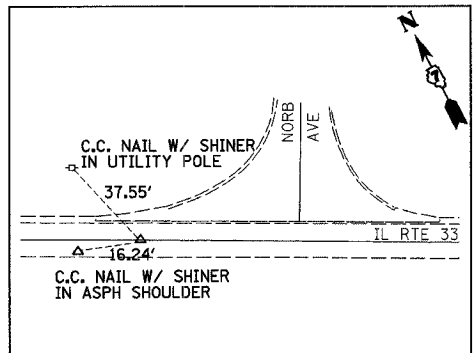
F.A.P. RTE.	SECTION	COUNTY	TOTAL SHEETS	SHEET NO.
95	•	EFFINGHAM	409	24
FED. ROAD DIST. NO. 7		ILLINOIS	FED. AID PROJECT	
*(6.7)Y, RS-1, 6B-1, 7B-1 & 7BR-2				
CONTRACT NO. 94356				



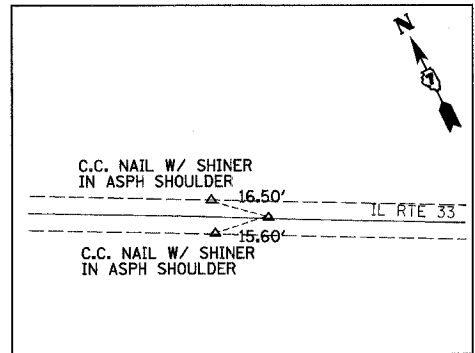
P.I. STA. EQUATION 531+41.06 BK  
531+33.78 AH  
(MAG NAIL)



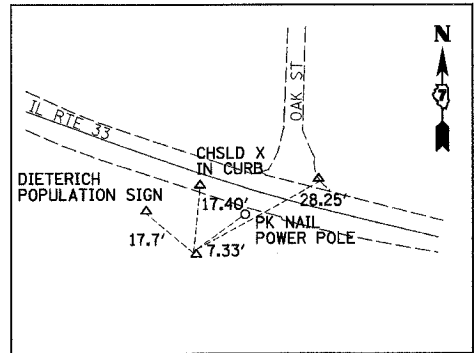
P.C. STA. 585+45.20  
(MAG NAIL)



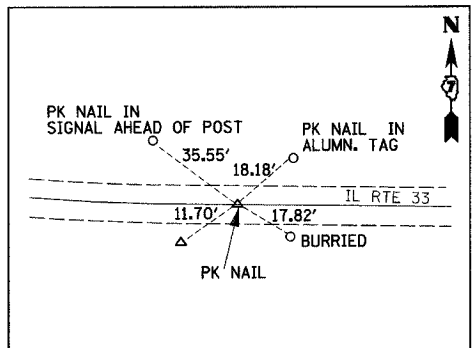
P.I. STA. 590+74.46  
(MAG NAIL)



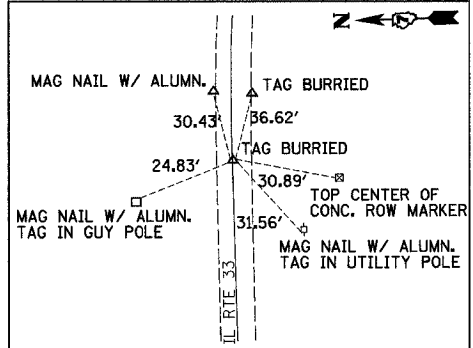
P.T. STA. 596+03.72  
(MAG NAIL)



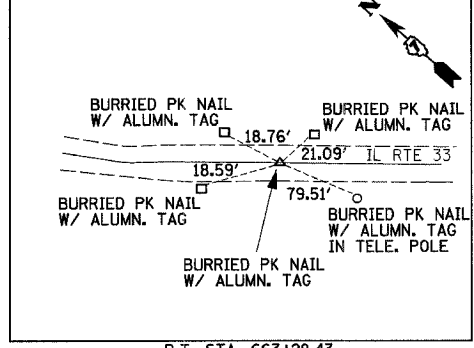
P.I. STA. 617+37.31  
(IP W/ ALUMN. CAP)



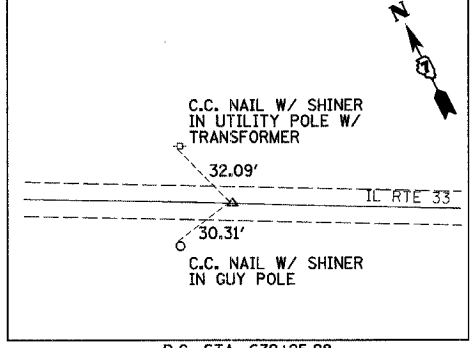
P.T. STA. 620+02.52  
(MAG NAIL)



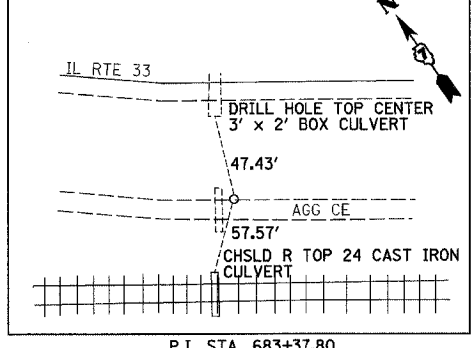
P.C. STA. 654+61.78  
(MAG NAIL)



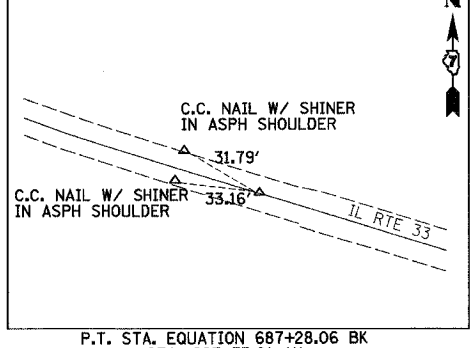
P.T. STA. 663+29.43  
(PK NAIL)



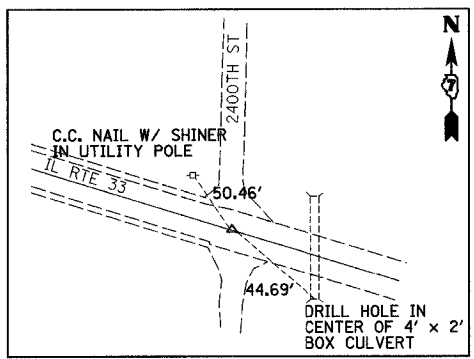
P.C. STA. 679+25.98  
(MAG NAIL)



P.I. STA. 683+37.80  
(IDOT DISK W/ PUNCH MARK)



P.T. STA. EQUATION 687+28.06 BK  
STA. 687+73.01 AH  
(MAG NAIL)



COUNTY LINE STA. 689+25.90  
IL RTE 33/2400TH ST  
(MAG NAIL)

REVISIONS	
NAME	DATE

ILLINOIS DEPARTMENT OF TRANSPORTATION

CONTROL TIES  
SHEET 2 OF 2

DATE 5/01

DRAWN BY MLO  
CHECKED BY RDW