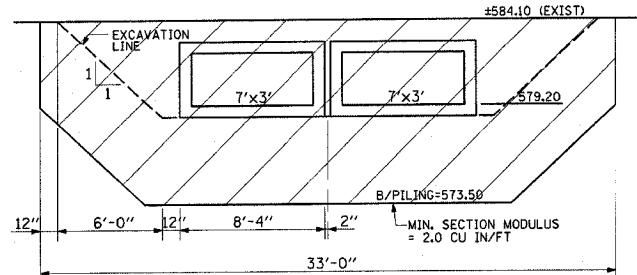
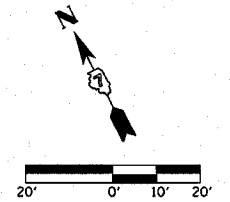
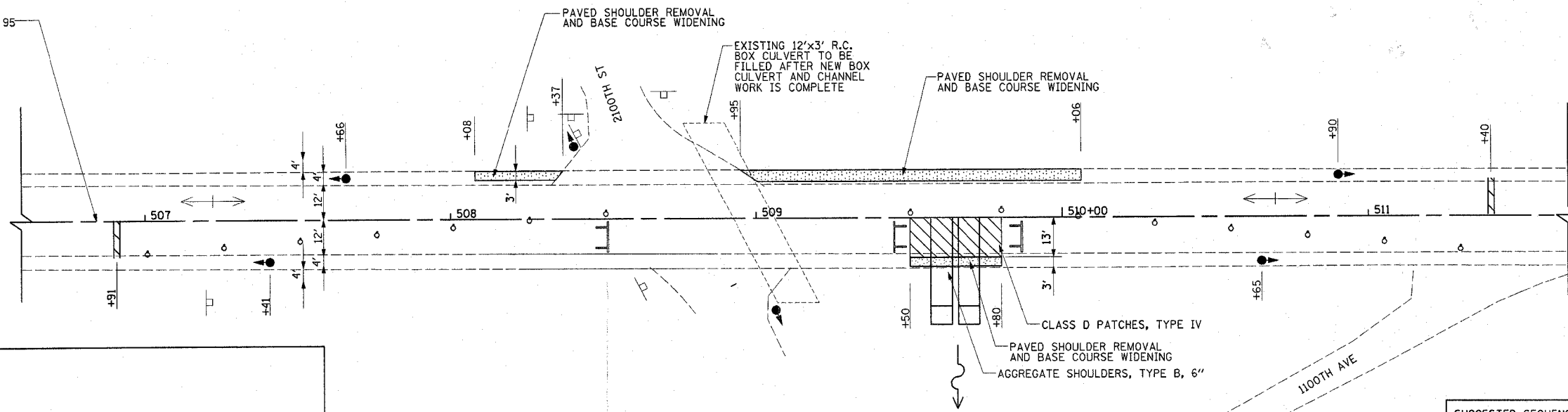


F.A.P. RTE.	SECTION	COUNTY	TOTAL SHEETS	SHEET NO.
95		EFFINGHAM	409	38
FED. ROAD DIST. NO. 7		ILLINOIS	FED. AID PROJECT	
		*(6,7)Y, RS-1, 6B-1, 7B-1 & 7BR-2		
CONTRACT NO. 94356				

STAGE I

CL F.A.P. ROUTE 95
(IL ROUTE 33)



TEMPORARY SHEET PILING

APPROXIMATE LAYOUT -
SEE SOIL BORINGS, SHEET 148 B

TEMPORARY SHEET PILING
STA. 509+48.50 TO STA 509+81.50 308 SQ FT

SUGGESTED SEQUENCE OF OPERATIONS

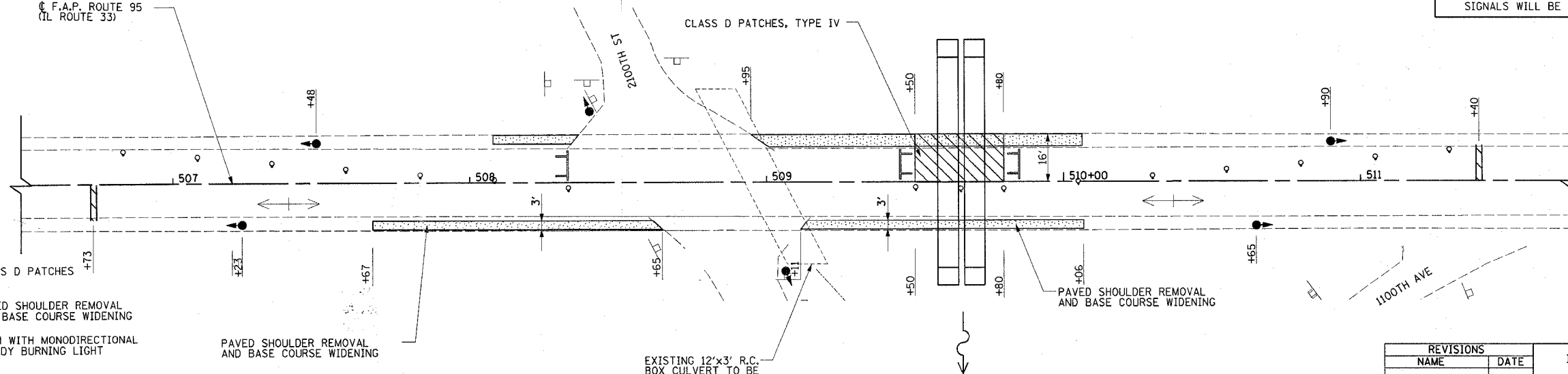
1. CONSTRUCT WIDENING FOR STAGE I.
2. INSTALL TEMPORARY TRAFFIC SIGNALS.
3. SET DRUMS FOR STAGE I ALLOWING MINIMUM 12 FEET FOR TRAFFIC LANE.
4. DRIVE SHEET PILING AT CENTERLINE OF IL RTE 33. CONSTRUCT NEW BOX OR PIPE CULVERT ON SOUTH SIDE OF CENTERLINE. REMOVE WIDENING.
5. CONSTRUCT WIDENING FOR STAGE II AND SWITCH TRAFFIC TO SOUTH SIDE.
6. CONSTRUCT REMAINDER OF NEW BOX OR PIPE CULVERT.

NOTES:

1. DOUBLE BOX CULVERT TO BE CONSTRUCTED PRIOR TO ROADWAY WIDENING. SEE SHEETS 41 AND 42 FOR STAGE CONSTRUCTION AT 2100TH ST AND 1100TH AVE.
2. FOR ADDITIONAL DETAILS ON LANE CLOSURE, SEE STANDARD 701316.
3. SEE SHEET 73 FOR CULVERT INFORMATION.
3. TRAFFIC CONTROL ITEMS SHALL BE PLACED IN ACCORDANCE WITH TRAFFIC CONTROL STANDARD 701316. THIS WORK WILL BE MEASURED AND PAID FOR AT THE CONTRACT UNIT PRICE EACH FOR TRAFFIC CONTROL AND PROTECTION STANDARD 701316, LOCATION 6. THIS PRICE SHALL INCLUDE ALL NECESSARY TRAFFIC CONTROL WORK FOR STAGE I AND STAGE II, EXCEPT TEMPORARY SIGNALS WILL BE PAID SEPARATELY.

STAGE II

CL F.A.P. ROUTE 95
(IL ROUTE 33)



LEGEND

- CLASS D PATCHES
- PAVED SHOULDER REMOVAL AND BASE COURSE WIDENING
- DRUM WITH MONODIRECTIONAL STEADY BURNING LIGHT
- STOP BAR
- TYPE III BARRICADE
- TRAFFIC SIGNALS
- PAVED SHOULDER REMOVAL AND BASE COURSE WIDENING

REVISIONS	
NAME	DATE

ILLINOIS DEPARTMENT OF TRANSPORTATION

**STAGE CONSTRUCTION
NEW DOUBLE 7' X 3' REINFORCED
CONCRETE BOX CULVERT
STA. 509+65.00**

DATE 10/01

DRAWN BY BOM

CHECKED BY TGC