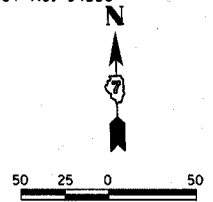
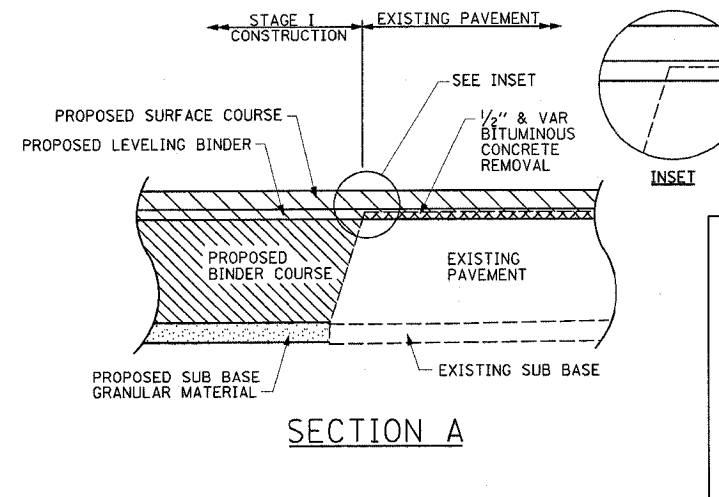
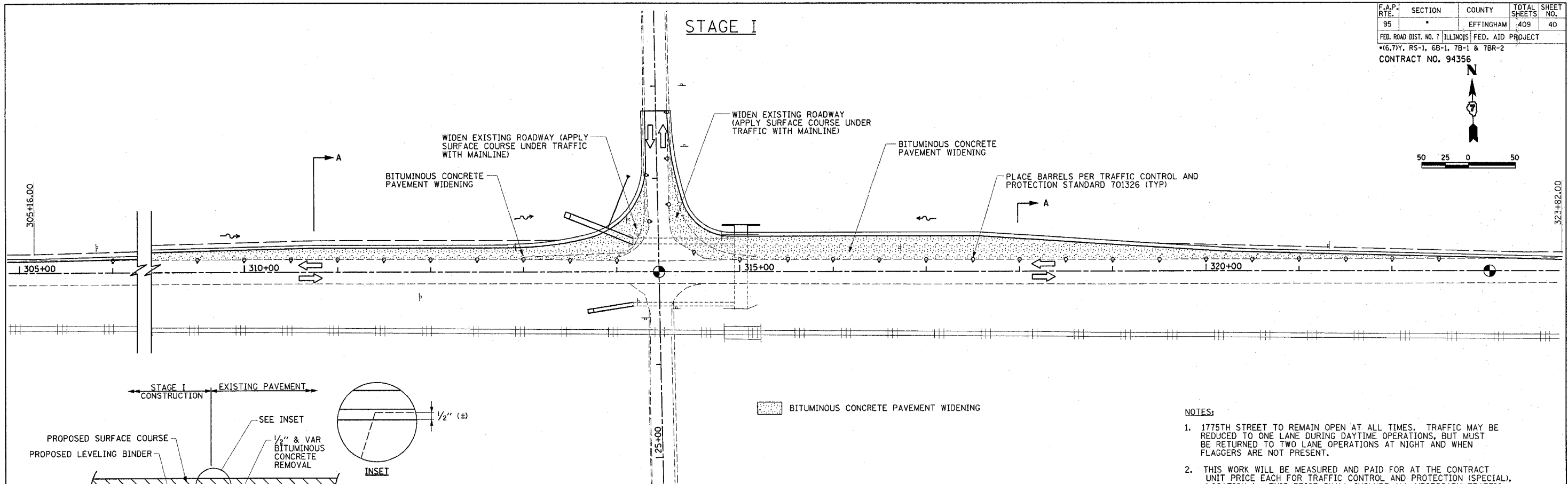


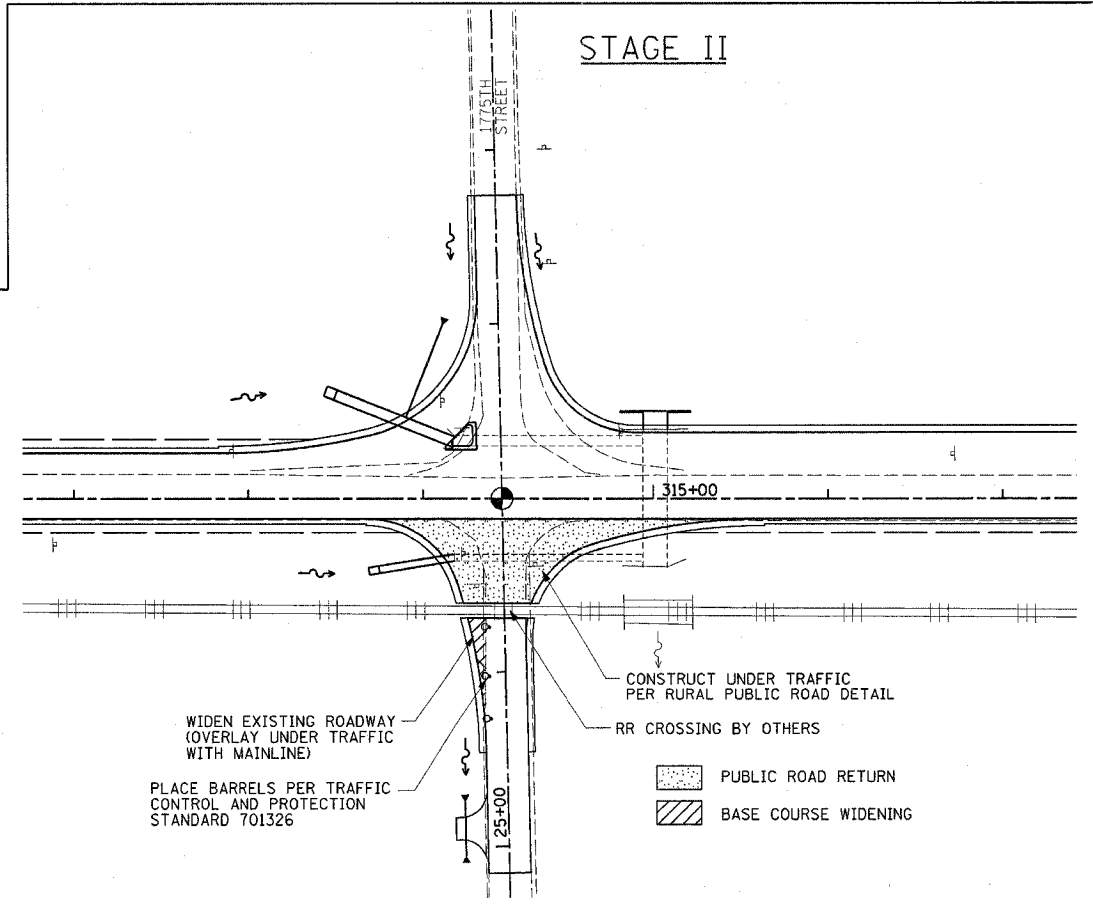
F.A.P. RTE.	SECTION	COUNTY	TOTAL SHEETS	SHEET NO.
95		EFFINGHAM	409	40
FED. ROAD DIST. NO. 7 ILLINOIS FED. AID PROJECT				
*(6,7)Y, RS-1, 6B-1, 7B-1 & 7BR-2				
CONTRACT NO. 94356				



STAGE I



STAGE II



NOTES:

- 1775TH STREET TO REMAIN OPEN AT ALL TIMES. TRAFFIC MAY BE REDUCED TO ONE LANE DURING DAYTIME OPERATIONS, BUT MUST BE RETURNED TO TWO LANE OPERATIONS AT NIGHT AND WHEN FLAGGERS ARE NOT PRESENT.
- THIS WORK WILL BE MEASURED AND PAID FOR AT THE CONTRACT UNIT PRICE EACH FOR TRAFFIC CONTROL AND PROTECTION (SPECIAL), LOCATION 1. THIS PRICE SHALL INCLUDE ALL NECESSARY TRAFFIC CONTROL STANDARDS AND WORK REQUIRED FOR STAGE I AND STAGE II.

SUGGESTED SEQUENCE OF OPERATIONS

STAGE IA

- TRAFFIC CONTINUES AS IS ON 1775TH STREET & IL RTE 33. (UTILIZE TRAFFIC CONTROL STANDARDS 701326 AND 701011).
- CONSTRUCT CULVERT EXTENSIONS (3 LOCATIONS) AND PROVIDE TEMPORARY DRAINAGE TO NEW CULVERT EXTENSIONS.

STAGE IB

- TRAFFIC CONTINUES AS IS ON 1775TH STREET & IL RTE 33. (UTILIZE TRAFFIC CONTROL STANDARDS 701326 AND 701011).
- UNDERCUT NORTH DITCH OF IL RTE 33. BITUMINOUS CONCRETE PAVEMENT WIDENING (EXCEPT FOR SURFACE COURSE) LT, STA. 305+16.00 TO STA. 323+42.00 (SEE SECTION A).
- UNDERCUT EAST & WEST DITCH OF 1775TH STREET NORTH OF IL RTE 33. CONSTRUCT BASE COURSE WIDENING.

STAGE II

- TRAFFIC CONTINUES AS IS ON 1775TH STREET & IL RTE 33. (UTILIZE TRAFFIC CONTROL STANDARDS 701326 AND 701011).
- UNDERCUT EAST AND WEST DITCH OF 1775TH STREET SOUTH OF IL RTE 33. CONSTRUCT BASE COURSE WIDENING.
- REBUILD BASE COURSE OF RADIUS RETURN SOUTH OF IL RTE 33 UNDER TRAFFIC.
- PLACE SURFACE COURSE UNDER TRAFFIC IN CONJUNCTION WITH MAINLINE RESURFACING.

REVISIONS	
NAME	DATE

ILLINOIS DEPARTMENT OF TRANSPORTATION
STAGE I & II CONSTRUCTION
IL RTE 33 AND 1775TH STREET
TRAFFIC CONTROL AND PROTECTION
(SPECIAL), LOCATION 1
 DRAWN BY MLO
 CHECKED BY BKB
 DATE 6/02

Revised 5/2/07