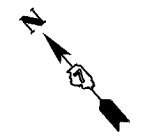
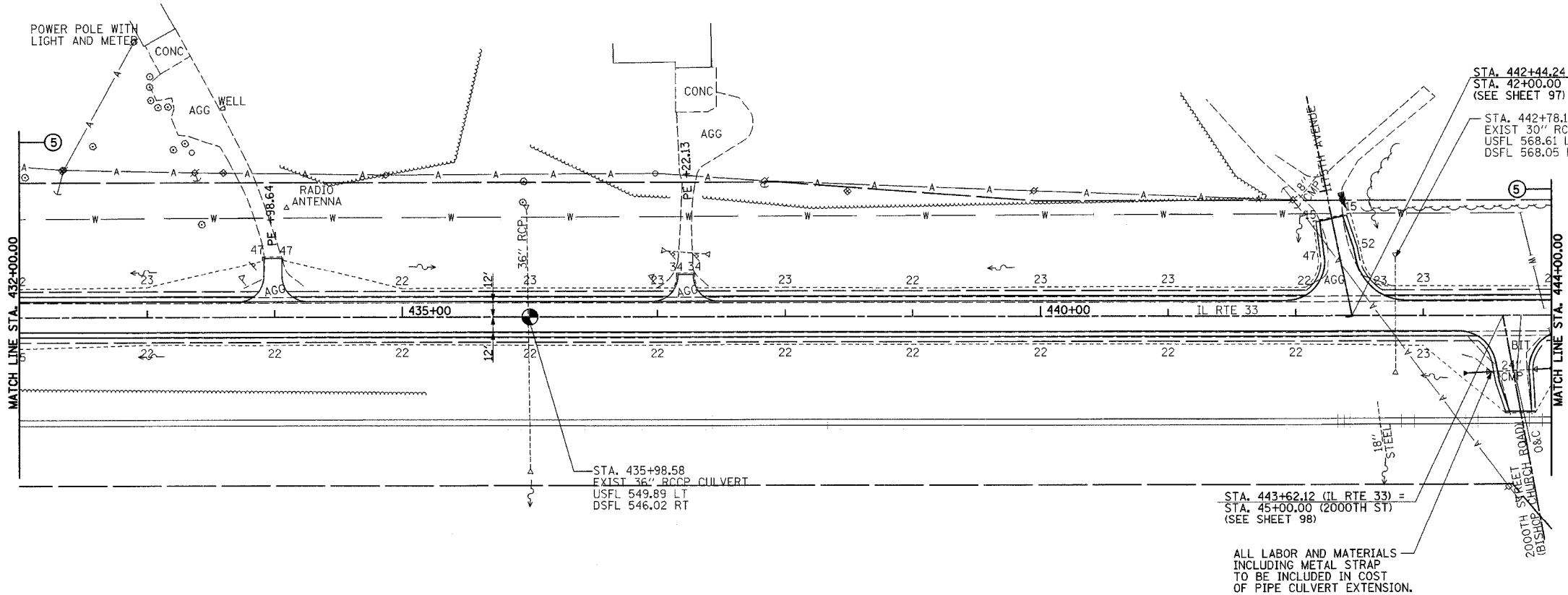


F.A.P. RTE.	SECTION	COUNTY	TOTAL SHEETS	SHEET NO.
95	*	EFFINGHAM	409	67
STA. 432+00.00 TO STA. 444+00.00				
FED. ROAD DIST. NO. 7 ILLINOIS FED. AID PROJECT				
*(6,7)Y, RS-1, 6B-1, 7B-1 & 7B-2				
CONTRACT NO. 94356				



DATE _____
 BY _____
 SURVEYED _____
 ALIGNED _____
 CHECKED _____
 CAD FILE NAME _____
 NO. _____

DATE _____
 BY _____
 SURVEYED _____
 GRADES CHECKED _____
 STRUCTURE NOTATIONS CHECKED _____
 NO. _____



PERMANENT SURVEY MARKERS, TYPE J
 P.O.T. STA. 436+00.00 1 EACH

PIPE CULVERTS CLASS D, TYPE I, 24" EXTENSIONS
 STA. 443+53.24 RT
 LENGTH = 18'
 DOWNSTREAM FLOWLINE = 569.16
 STA. 443+85.34 RT
 LENGTH = 12'
 UPSTREAM FLOWLINE = 570.64

END SECTIONS, 24"
 45' RT STA. 443+35.03 1 EACH
 42' RT STA. 443+96.92 1 EACH
 TOTAL 2 EACH

FLARED END SECTION REMOVAL
 RT STA. 443+35.03 1 EACH
 RT STA. 443+96.92 1 EACH
 TOTAL 2 EACH

PAVEMENT REMOVAL
 2000TH ST S 184 SQ YD

ALL LABOR AND MATERIALS INCLUDING METAL STRAP TO BE INCLUDED IN COST OF PIPE CULVERT EXTENSION.

