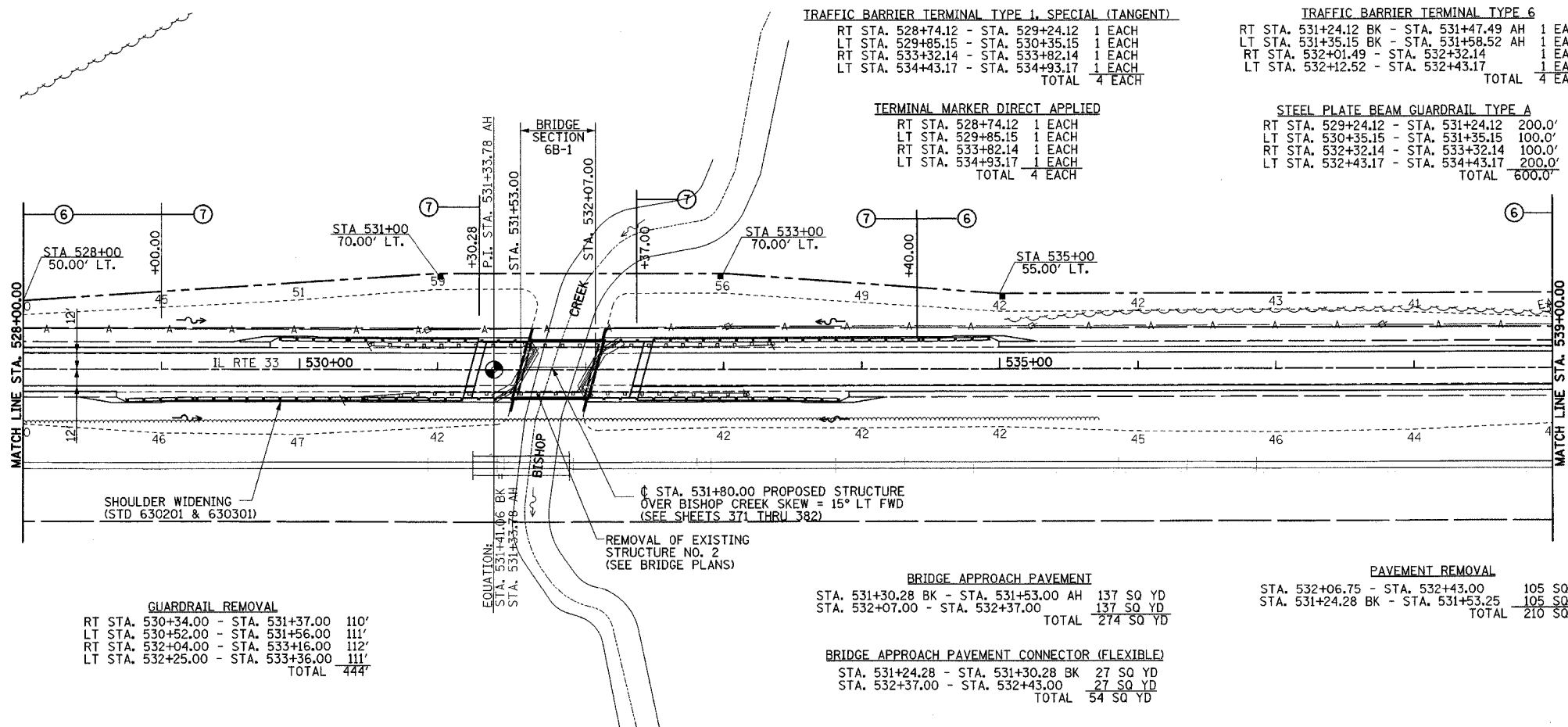
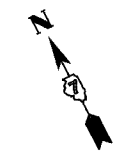


DATE	
BY	
REVISION	
NO.	
DESCRIPTION	
DATE	
BY	
REVISION	
NO.	
DESCRIPTION	

DATE	
BY	
REVISION	
NO.	
DESCRIPTION	
DATE	
BY	
REVISION	
NO.	
DESCRIPTION	

F.A.P. RTE.	SECTION	COUNTY	TOTAL SHEETS	SHEET NO.
95	*	EFFINGHAM	409	75
STA. 528+00.00 TO STA. 539+00.00				
FED. ROAD DIST. NO. 7 ILLINOIS FED. AID PROJECT				
* (6,7)Y, RS-1, 6B-1, 7B-1 & 7BR-2				
CONTRACT NO. 94356				



**GUARDRAIL REMOVAL**

RT STA. 530+34.00 - STA. 531+37.00	110'
LT STA. 530+52.00 - STA. 531+56.00	111'
RT STA. 532+04.00 - STA. 533+16.00	112'
LT STA. 532+25.00 - STA. 533+36.00	111'
<b>TOTAL</b>	<b>444'</b>

**BRIDGE APPROACH PAVEMENT**

STA. 531+30.28 BK - STA. 531+53.00 AH	137 SQ YD
STA. 532+07.00 - STA. 532+37.00	137 SQ YD
<b>TOTAL</b>	<b>274 SQ YD</b>

**PAVEMENT REMOVAL**

STA. 532+06.75 - STA. 532+43.00	105 SQ YD
STA. 531+24.28 BK - STA. 531+53.25	105 SQ YD
<b>TOTAL</b>	<b>210 SQ YD</b>

**BRIDGE APPROACH PAVEMENT CONNECTOR (FLEXIBLE)**

STA. 531+24.28 - STA. 531+30.28 BK	27 SQ YD
STA. 532+37.00 - STA. 532+43.00	27 SQ YD
<b>TOTAL</b>	<b>54 SQ YD</b>

**PERMANENT SURVEY MARKERS, TYPE 1**

P.I. STA. 531+33.78 (AH)	1 EACH
--------------------------	--------

**FURNISHING AND ERECTING RIGHT-OF-WAY MARKERS**

50' LT STA. 528+00.00	1 EACH
70' LT STA. 531+00.00	1 EACH
70' LT STA. 533+00.00	1 EACH
55' LT STA. 535+00.00	1 EACH
<b>TOTAL</b>	<b>4 EACH</b>

**GUARDRAIL MARKERS, TYPE A**

RT STA. 528+74.12 - STA. 531+47.49	3 EACH
LT STA. 529+85.15 - STA. 531+58.52	2 EACH
RT STA. 532+01.49 - STA. 533+82.14	2 EACH
LT STA. 532+12.52 - STA. 534+93.17	3 EACH
<b>TOTAL</b>	<b>10 EACH</b>

**BARRIER WALL MARKERS, TYPE B**

RT STA. 531+49.99 - STA. 531+98.99	2 EACH
LT STA. 531+61.02 - STA. 532+10.02	2 EACH
<b>TOTAL</b>	<b>4 EACH</b>

