

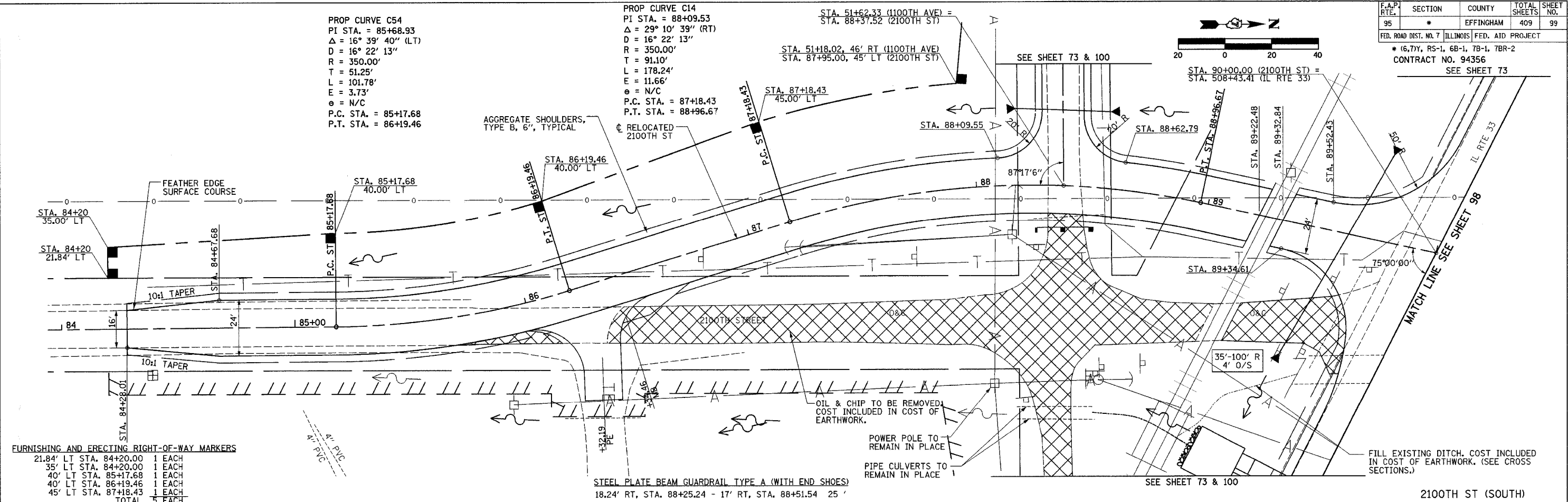
| | |
|---------|--|
| DATE | |
| BY | |
| PLAN | |
| NO. | |
| DATE | |
| BY | |
| PROFILE | |
| NO. | |

| | |
|---------|--|
| DATE | |
| BY | |
| PROFILE | |
| NO. | |
| DATE | |
| BY | |
| PLAN | |
| NO. | |

| F.A.P. RTE. | SECTION | COUNTY | TOTAL SHEETS | SHEET NO. |
|---|---------|-----------|--------------|-----------|
| 95 | * | EFFINGHAM | 409 | 99 |
| FED. ROAD DIST. NO. 7 ILLINOIS FED. AID PROJECT | | | | |
| * (6,7)Y, RS-1, 6B-1, 7B-1, 7BR-2 | | | | |
| CONTRACT NO. 94356 | | | | |
| SEE SHEET 73 | | | | |

PROP CURVE C54
 PI STA. = 85+68.93
 $\Delta = 16^\circ 39' 40''$ (LT)
 $D = 16^\circ 22' 13''$
 $R = 350.00'$
 $T = 51.25'$
 $L = 101.78'$
 $E = 3.73'$
 $e = N/C$
 P.C. STA. = 85+17.68
 P.T. STA. = 86+19.46

PROP CURVE C14
 PI STA. = 88+09.53
 $\Delta = 29^\circ 10' 39''$ (RT)
 $D = 16^\circ 22' 13''$
 $R = 350.00'$
 $T = 91.10'$
 $L = 178.24'$
 $E = 11.66'$
 $e = N/C$
 P.C. STA. = 87+18.43
 P.T. STA. = 88+196.67



FURNISHING AND ERECTING RIGHT-OF-WAY MARKERS

| | |
|-------------------------|--------|
| 21.84' LT STA. 84+20.00 | 1 EACH |
| 35' LT STA. 84+20.00 | 1 EACH |
| 40' LT STA. 85+17.68 | 1 EACH |
| 40' LT STA. 86+19.46 | 1 EACH |
| 45' LT STA. 87+18.43 | 1 EACH |
| TOTAL | 5 EACH |

STEEL PLATE BEAM GUARDRAIL TYPE A (WITH END SHOES)
 18.24' RT, STA. 88+25.24 - 17' RT, STA. 88+51.54 25'

