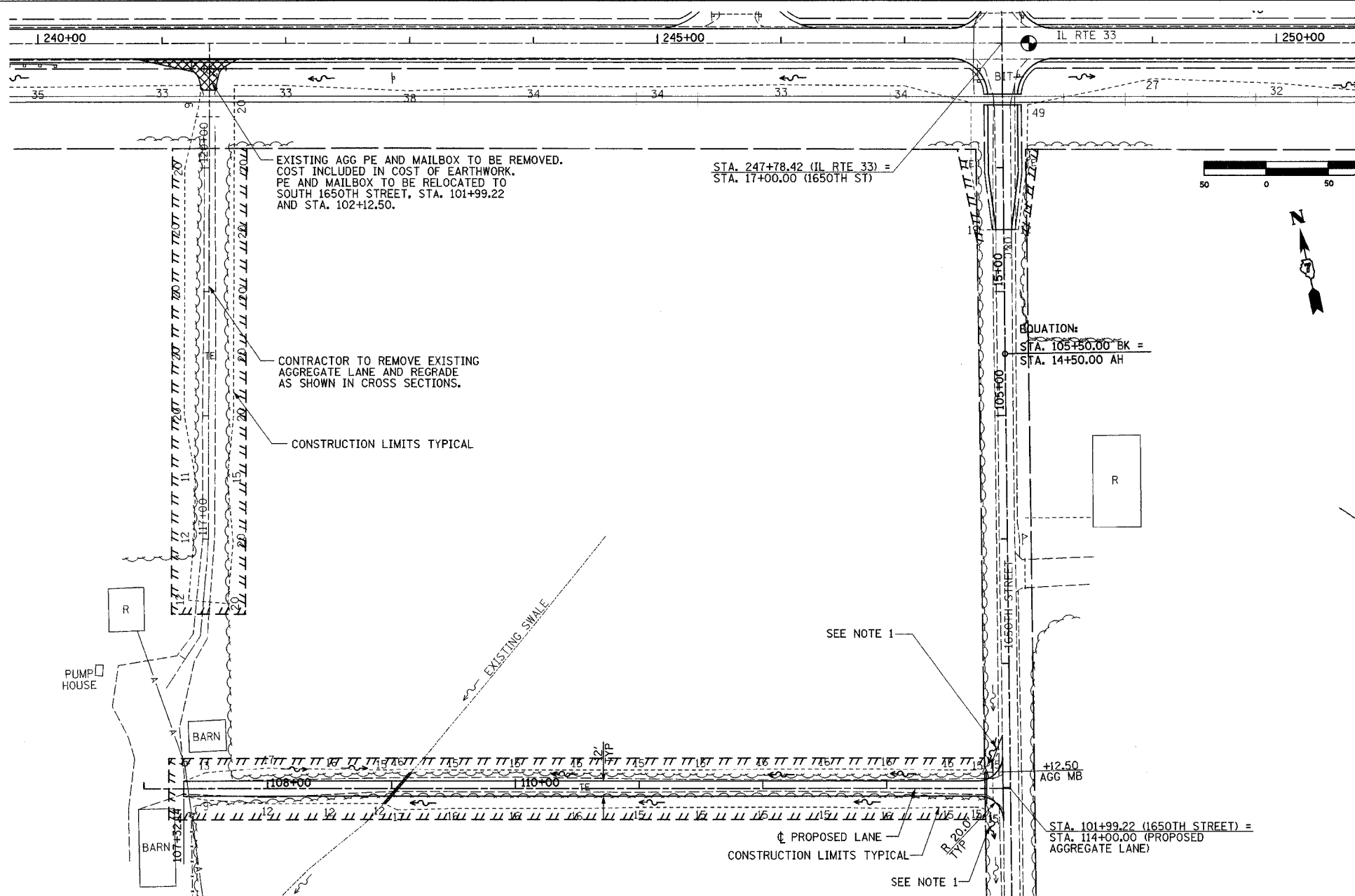


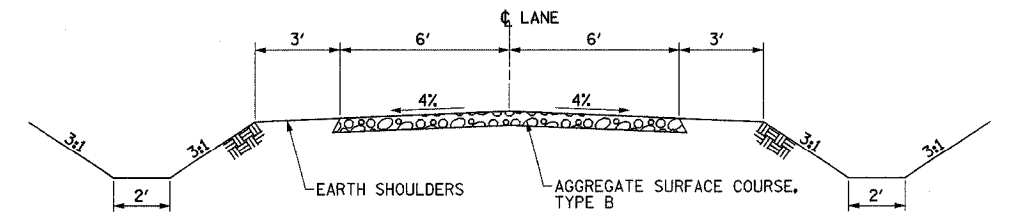
F.A.P. RTE.	SECTION	COUNTY	TOTAL SHEETS	SHEET NO.
95	*	EFFINGHAM	409	105
FED. ROAD DIST. NO. 7 ILLINOIS FED. AID PROJECT				
*(6,7)Y, RS-1, 6B-1, 7B-1 & 7BR-2				
CONTRACT NO. 94356				



PIPE CULVERT, CLASS D, TYPE 1, 12"
 STA. 113+80.82, LENGTH = 30'
 USFL ELEVATION = 591.13, 15' LT
 DSFL ELEVATION = 591.04, 15' RT
 (BURY FLOW LINE 3 INCHES)

DOUBLE PIPE CULVERTS, CLASS D, TYPE 1, 12"
 STA. 109+03.45 & STA. 109+05.45
 LENGTH = 32' (BOTH)
 USFL ELEVATION = 589.92, 12.0' LT (BOTH)
 DSFL ELEVATION = 589.61, 12.5' RT (BOTH)
 (BURY FLOW LINE 3 INCHES)

AGGREGATE SURFACE COURSE, TYPE B
 STA. 107+32.14 - STA. 113+74.00 292 TONS



TYPICAL SECTION
 STA. 107+32.14 TO STA. 113+74.00

- SHEET NOTES:
- EXISTING WEST DITCH AT 1650TH STREET TO BE GRADED TO NEW CULVERT AT PROPOSED LANE. COST INCLUDED IN COST OF EARTHWORK.
 - SEE SHEETS 337-343 FOR EXISTING AND PROPOSED LANE CROSS SECTIONS.
 - SEE SHEET 19 FOR AGGREGATE QUANTITIES AT RADIUS RETURN.

DATE	
BY	
REVISION	
NO.	
DATE	
BY	
REVISION	
NO.	
DATE	
BY	
REVISION	
NO.	

DATE	
BY	
REVISION	
NO.	
DATE	
BY	
REVISION	
NO.	
DATE	
BY	
REVISION	
NO.	

