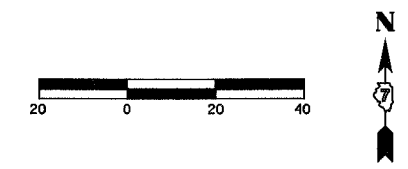
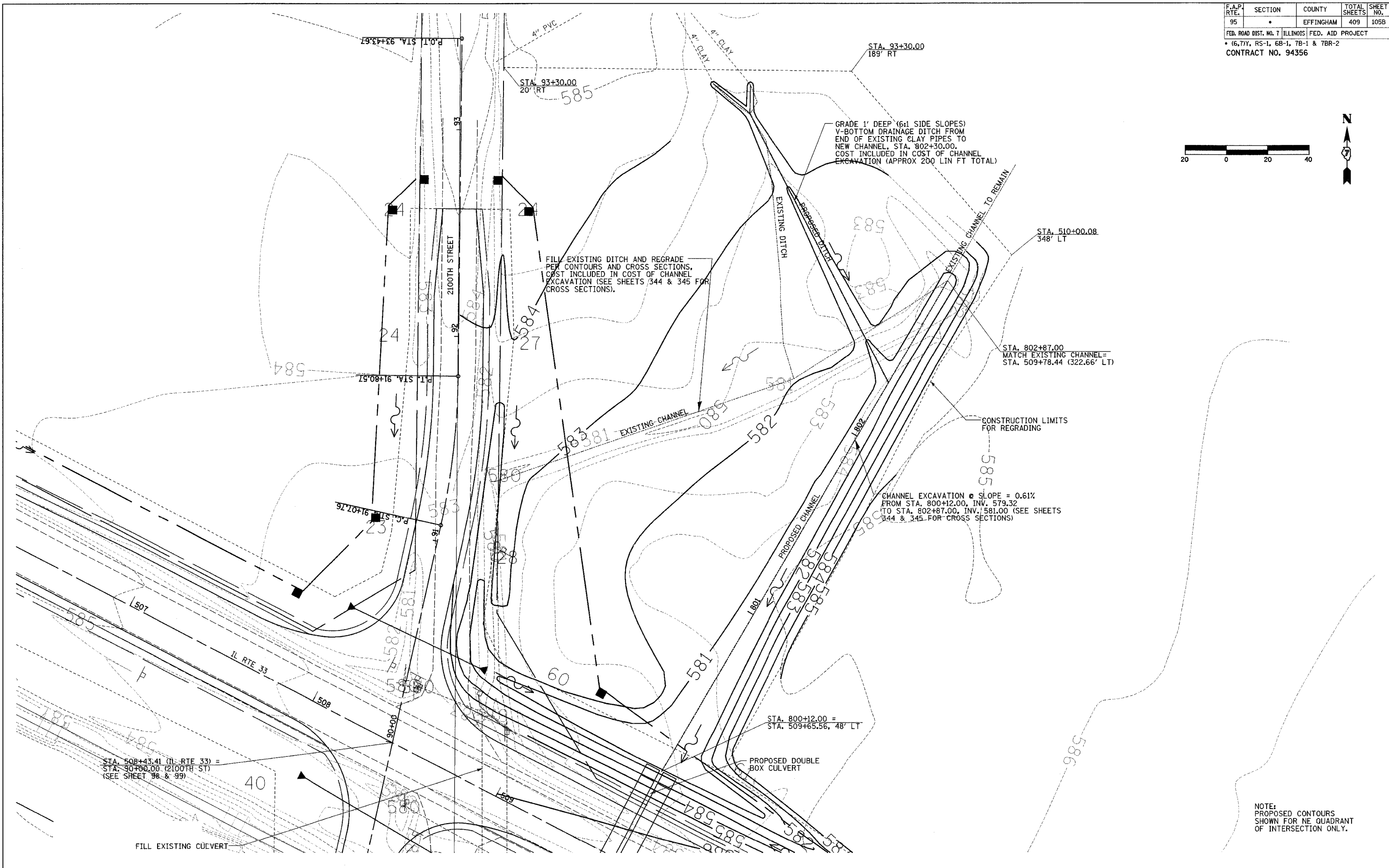


F.A.P. RTE.	SECTION	COUNTY	TOTAL SHEETS	SHEET NO.
95	•	EFFINGHAM	409	105B
FED. ROAD DIST. NO. 7 ILLINOIS FED. AID PROJECT				
• (6,7)Y, RS-1, 6B-1, 7B-1 & 7B-2				
CONTRACT NO. 94356				

PLAN	DATE
SURVEYED	
PLOTTED	
CHECKED	
BY	
NO.	

PROFILE	DATE
SURVEYED	
PLOTTED	
CHECKED	
BY	
NO.	



NOTE:
 PROPOSED CONTOURS
 SHOWN FOR NE QUADRANT
 OF INTERSECTION ONLY.