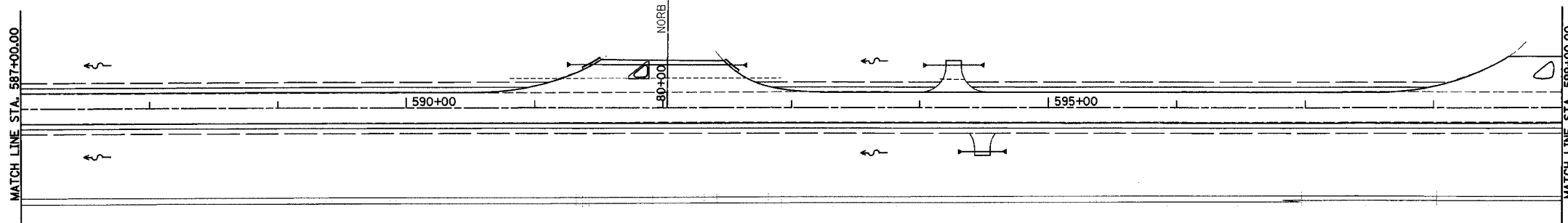
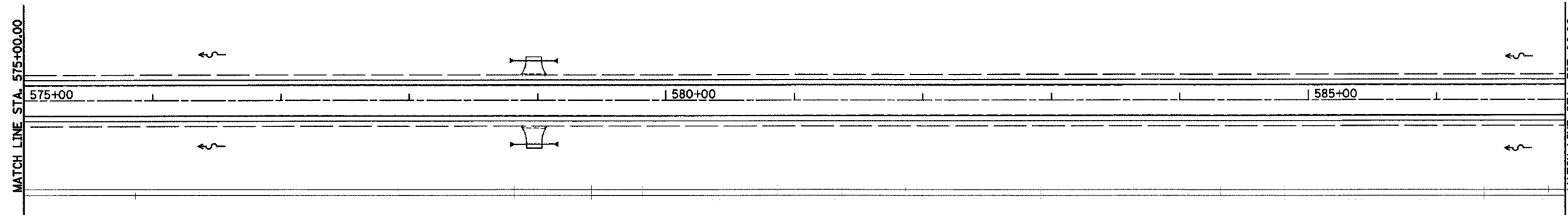
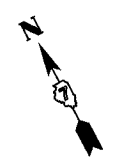
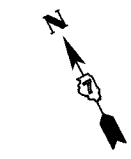


F.A.P. RTE.	SECTION	COUNTY	TOTAL SHEETS	SHEET NO.
95	•	EFFINGHAM	409	125
FED. ROAD DIST. NO. 7		ILLINOIS	FED. AID PROJECT	
•(6,7)Y, RS-1, 6B-1, 7B-1 & 7BR-2				
CONTRACT NO. 94356				



- LEGEND**
- PERIMETER EROSION BARRIER
 - TEMPORARY DITCH CHECK
 - EARTH EXCAVATION FOR EROSION CONTROL
 - INLET AND PIPE PROTECTION
 - STONE RIPRAP OR GABIONS (SEE SCHEDULE)
 - EROSION CONTROL BLANKET
 - EXISTING RIPRAP

REVISIONS	
NAME	DATE

ILLINOIS DEPARTMENT OF TRANSPORTATION

EROSION CONTROL PLAN
 STA 575+00.00 TO STA 599+00.00
 SHEET 20 OF 24

DATE 2/02

DRAWN BY BDM
 CHECKED BY TGC