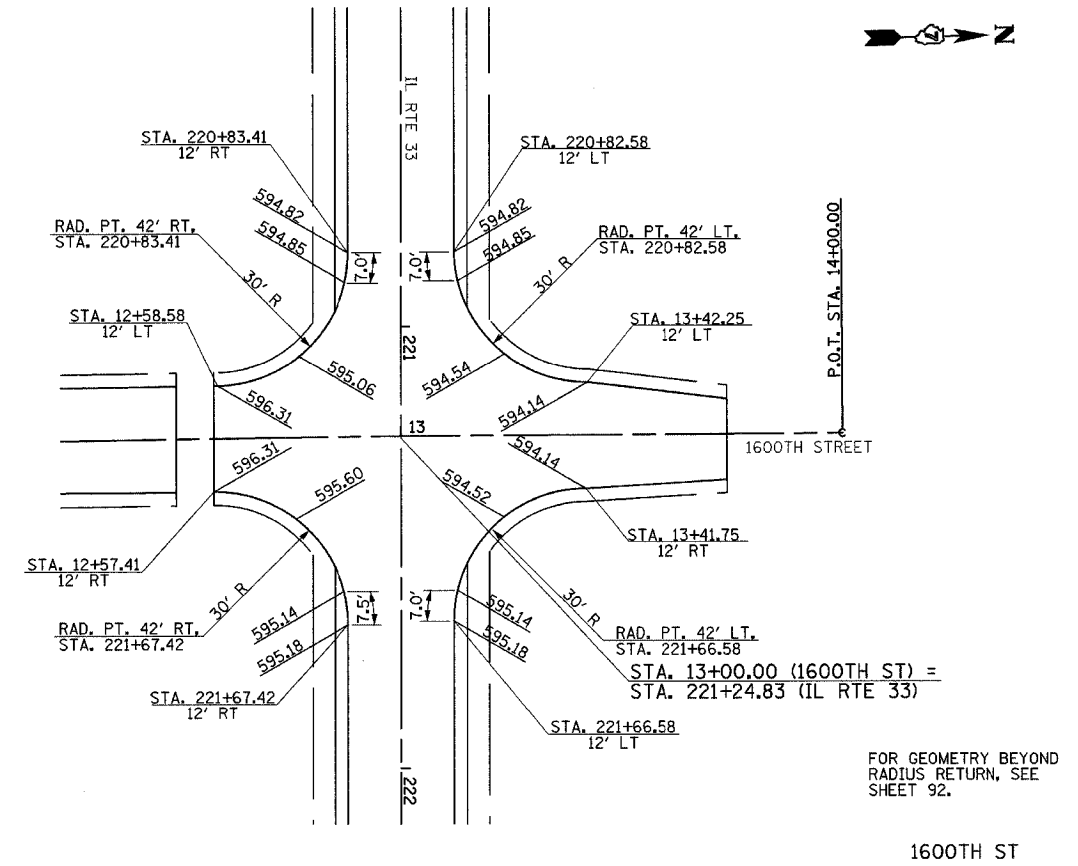
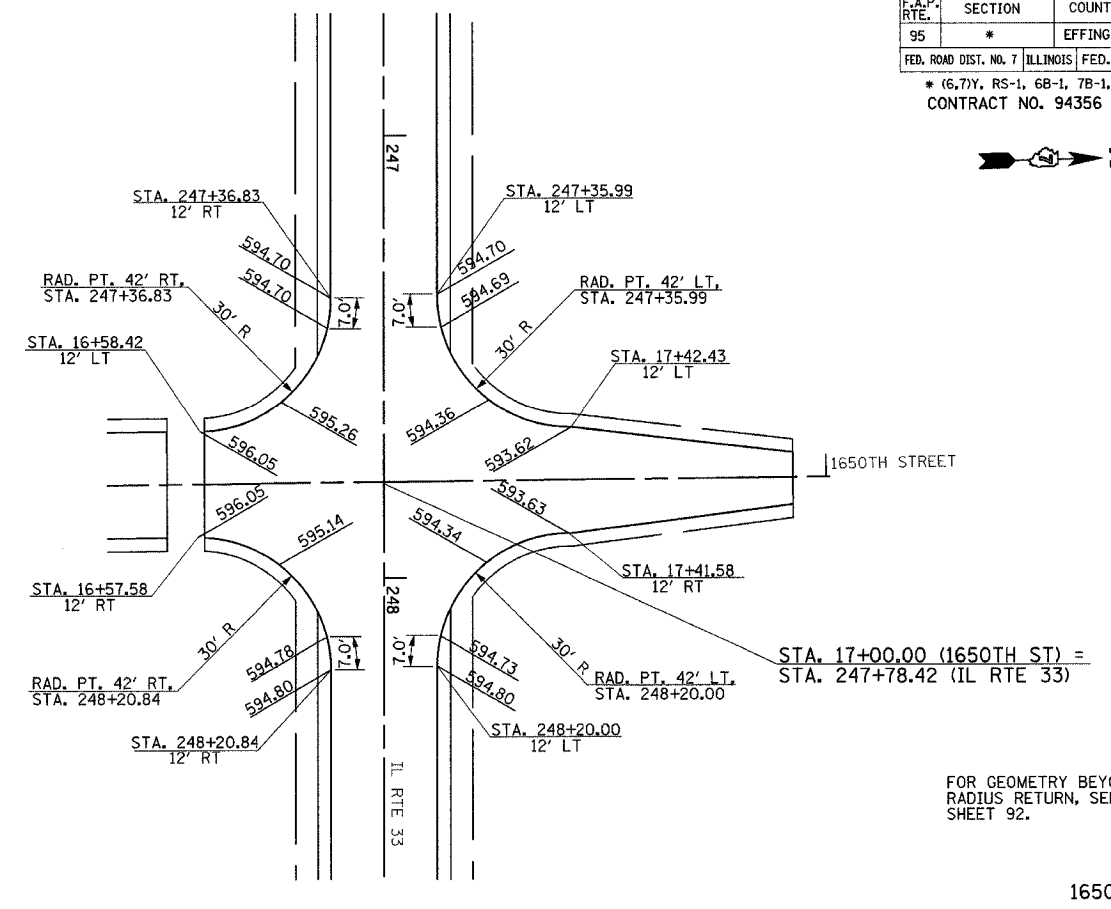


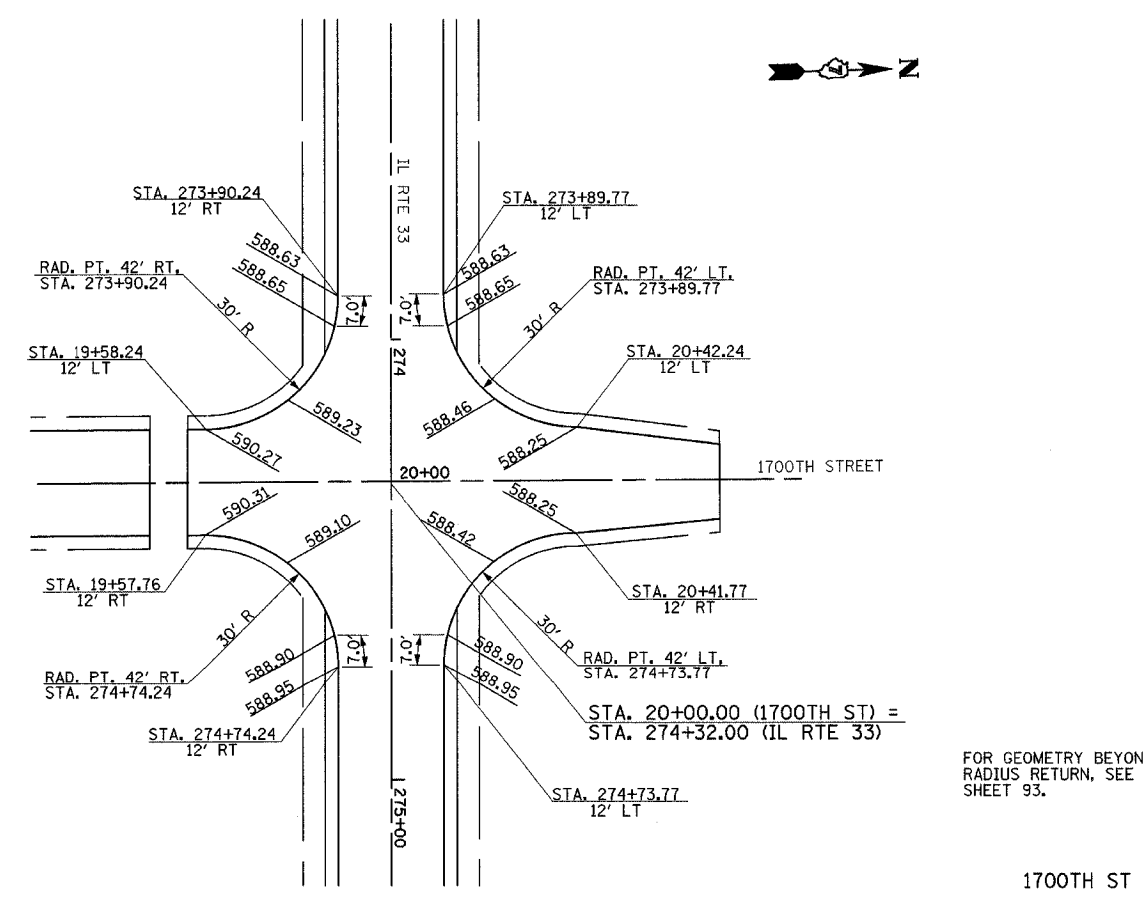
F.A.P. RTE.	SECTION	COUNTY	TOTAL SHEETS	SHEET NO.
95	*	EFFINGHAM	409	131
FED. ROAD DIST. NO. 7 ILLINOIS FED. AID PROJECT				
* (6,7)Y, RS-1, 6B-1, 7B-1, 7B-2				
CONTRACT NO. 94356				



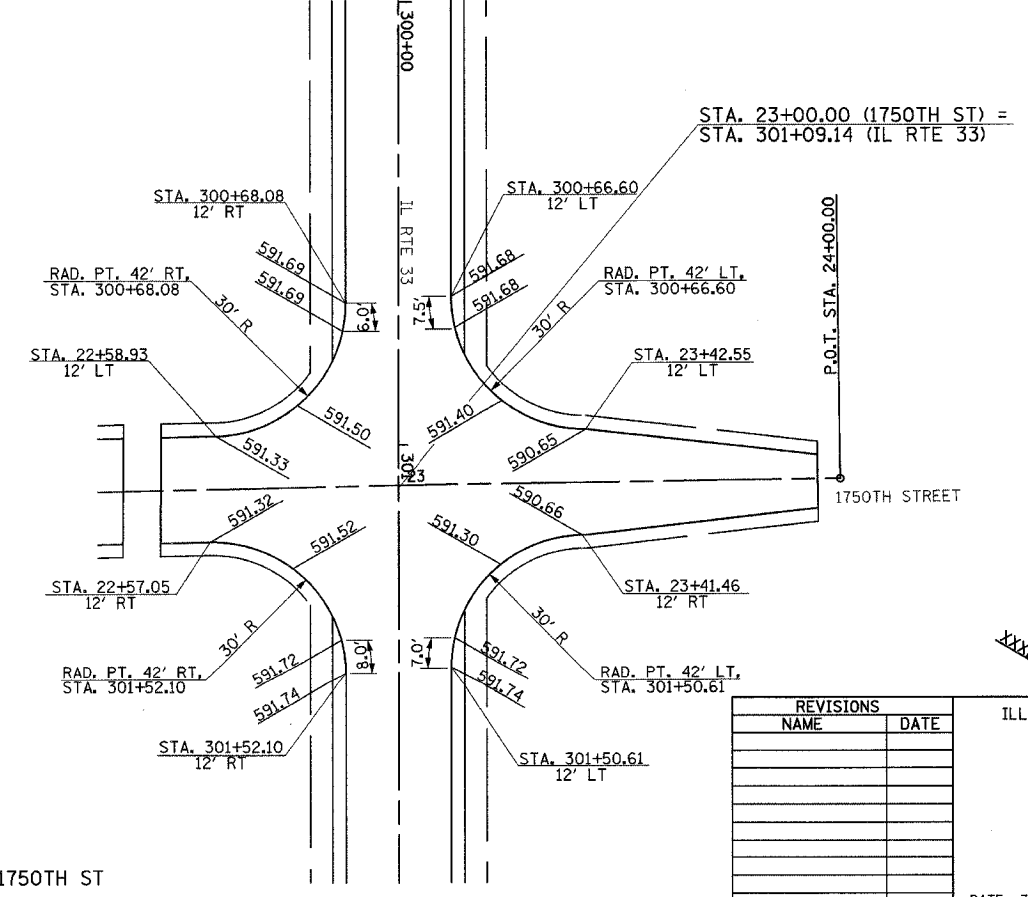
FOR GEOMETRY BEYOND RADIUS RETURN, SEE SHEET 92.



FOR GEOMETRY BEYOND RADIUS RETURN, SEE SHEET 92.



FOR GEOMETRY BEYOND RADIUS RETURN, SEE SHEET 93.



FOR GEOMETRY BEYOND RADIUS RETURN, SEE SHEET 93.



LEGEND

XXXXXX INDICATES PROPOSED GRADE ELEVATION INTERVAL AROUND CURVES IS 20' UNLESS NOTED

REVISIONS	
NAME	DATE

ILLINOIS DEPARTMENT OF TRANSPORTATION
INTERSECTION GEOMETRICS
SHEET 2 OF 9

DATE 7/02
DRAWN BY MLO
CHECKED BY RMD