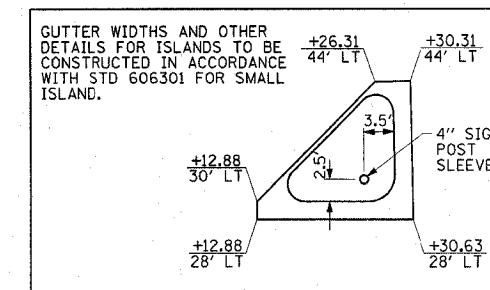
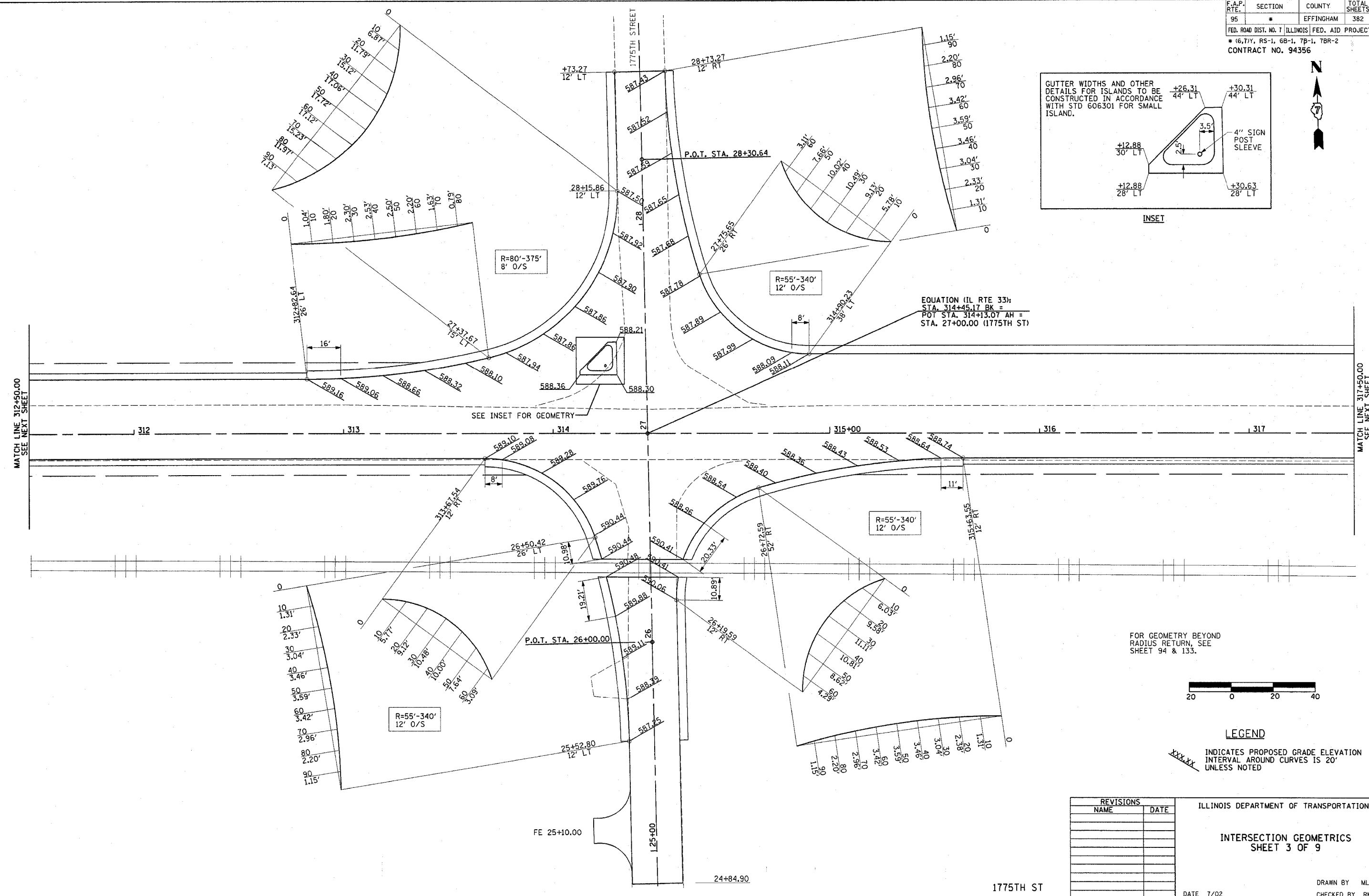


F.A.P. RTE.	SECTION	COUNTY	TOTAL SHEETS	SHEET NO.
95	*	EFFINGHAM	382	132
FED. ROAD DIST. NO. 7 ILLINOIS FED. AID PROJECT				
* (6,7)Y, RS-1, 6B-1, 7B-1, 7BR-2				
CONTRACT NO. 94356				



MATCH LINE 312+50.00
SEE NEXT SHEET

MATCH LINE 317+50.00
SEE NEXT SHEET



EQUATION (IL RTE 33):
STA. 314+45.17 BK =
POT STA. 314+13.07 AH =
STA. 27+00.00 (1775TH ST)

FOR GEOMETRY BEYOND
RADIUS RETURN, SEE
SHEET 94 & 133.



LEGEND

XXXXXX INDICATES PROPOSED GRADE ELEVATION
INTERVAL AROUND CURVES IS 20'
UNLESS NOTED

REVISIONS	
NAME	DATE

ILLINOIS DEPARTMENT OF TRANSPORTATION

INTERSECTION GEOMETRICS
SHEET 3 OF 9

DATE 7/02

DRAWN BY MLO
CHECKED BY RMD