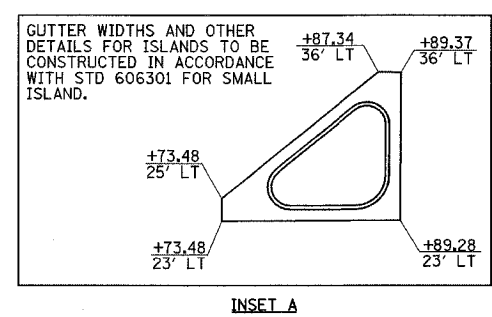
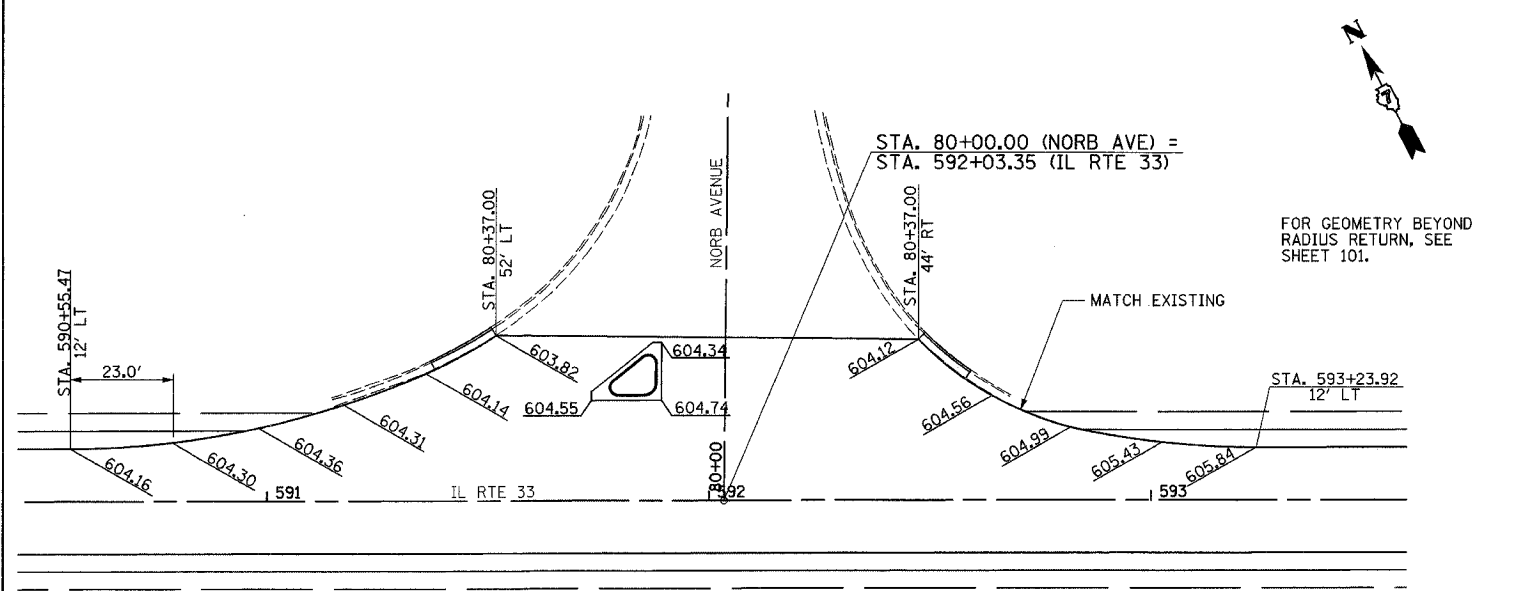
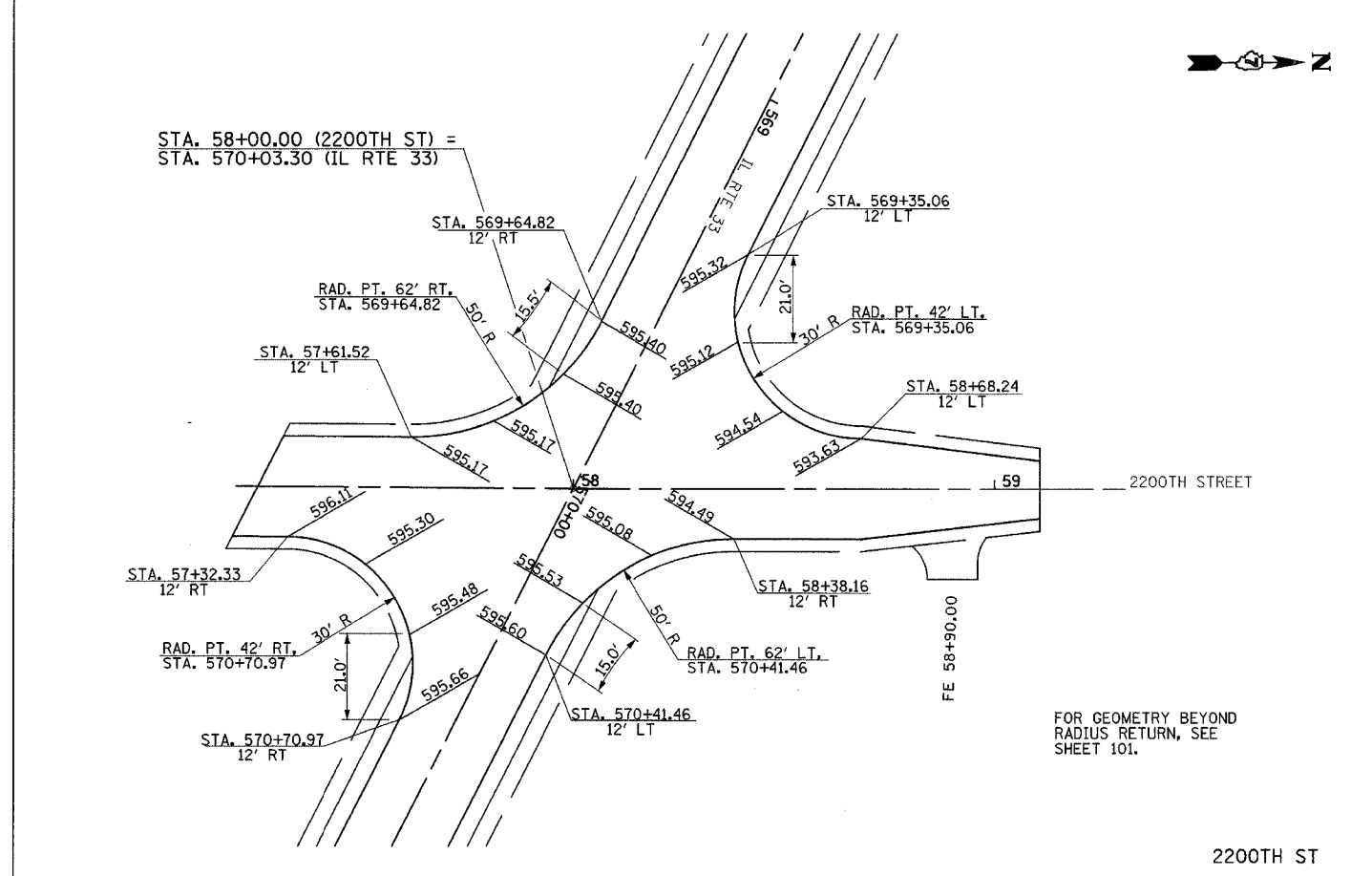
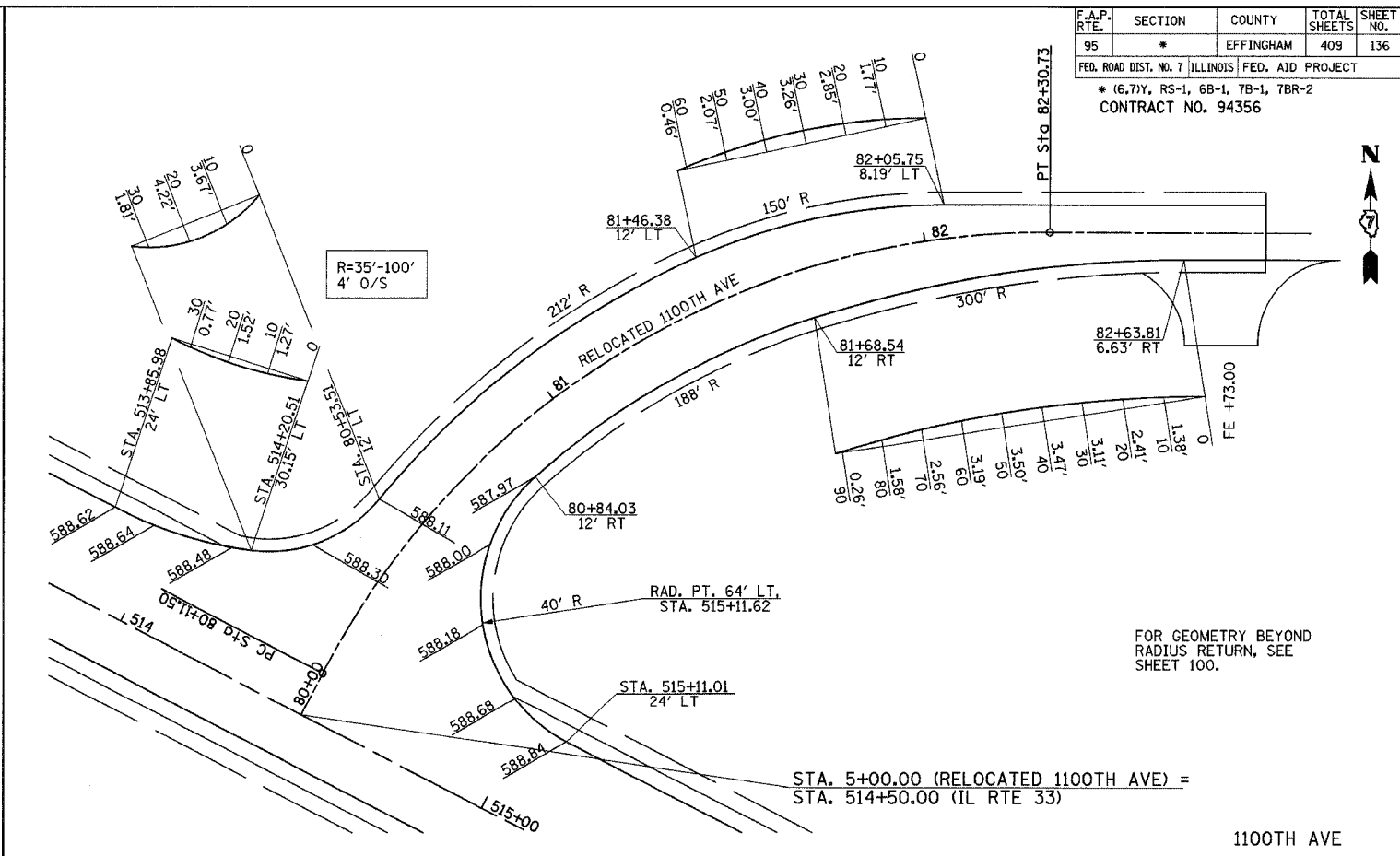
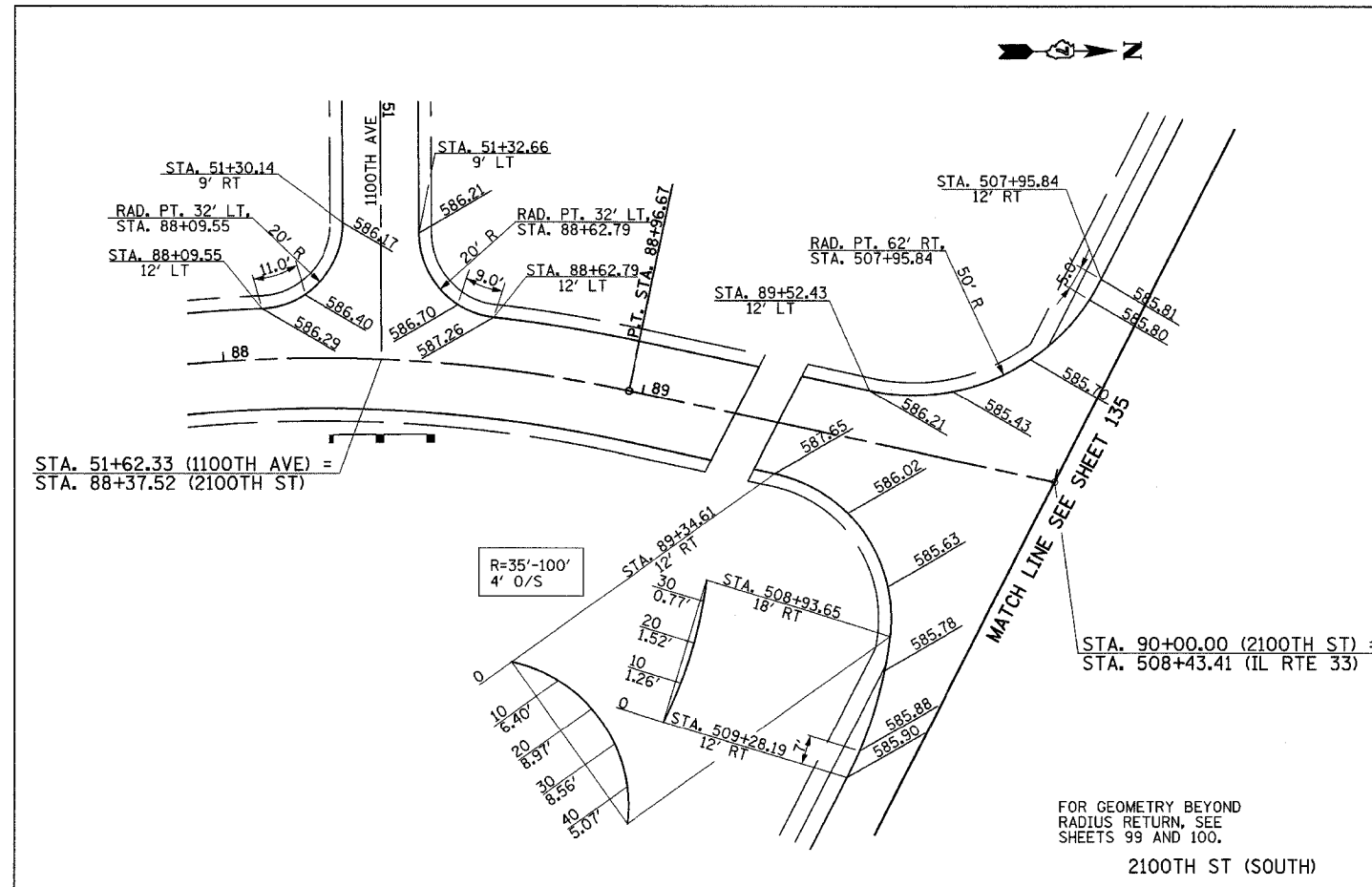


F.A.P. RTE.	SECTION	COUNTY	TOTAL SHEETS	SHEET NO.
95	*	EFFINGHAM	409	136

FED. ROAD DIST. NO. 7 ILLINOIS FED. AID PROJECT  
 \* (6.7)Y, RS-1, 6B-1, 7B-1, 7BR-2  
 CONTRACT NO. 94356



**LEGEND**

INDICATES PROPOSED GRADE ELEVATION INTERVAL AROUND CURVES IS 20' UNLESS NOTED

ILLINOIS DEPARTMENT OF TRANSPORTATION

**INTERSECTION GEOMETRICS**  
SHEET 7 OF 9

DATE 7/02

DRAWN BY MLO  
CHECKED BY RMD

REVISIONS	
NAME	DATE