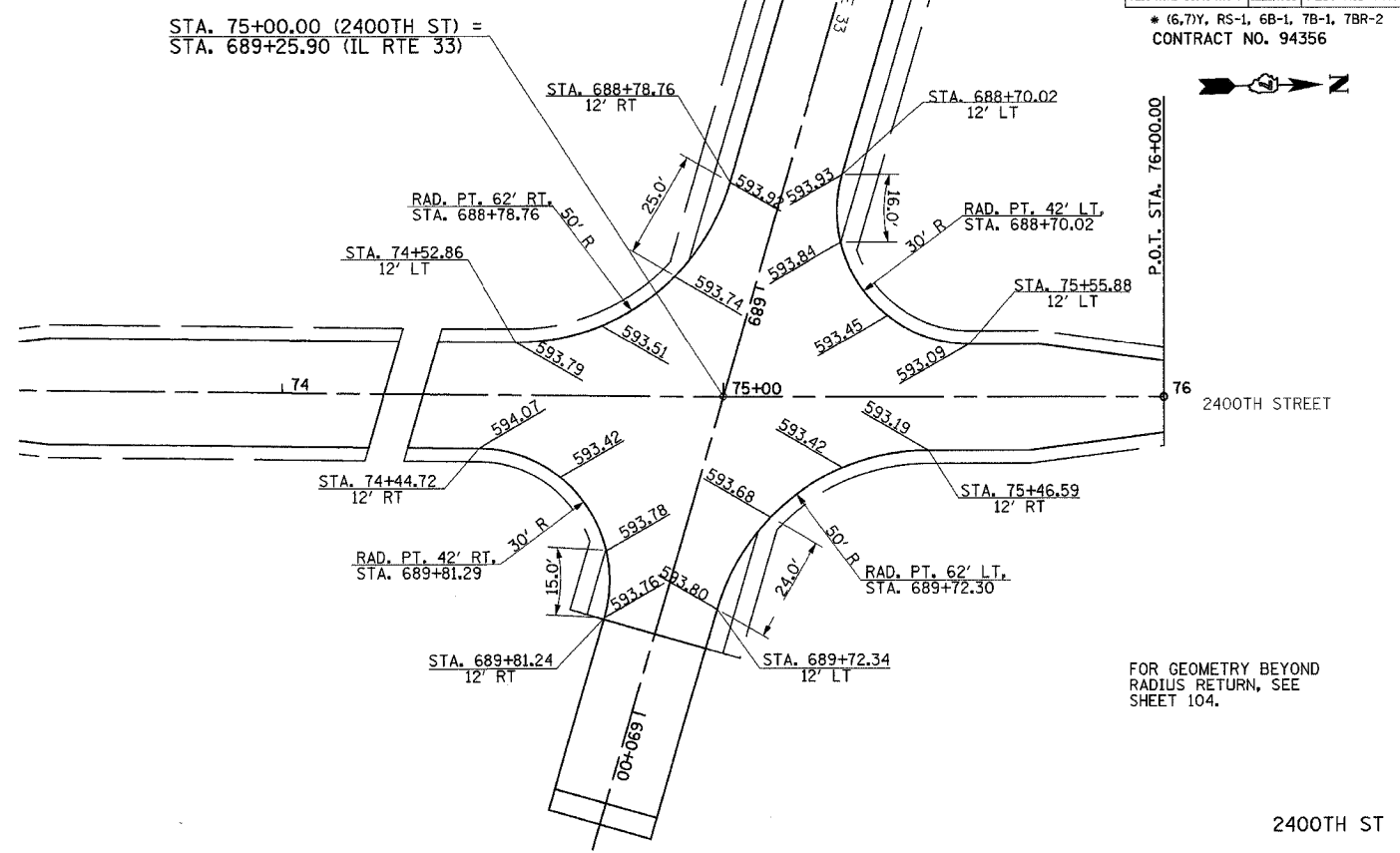
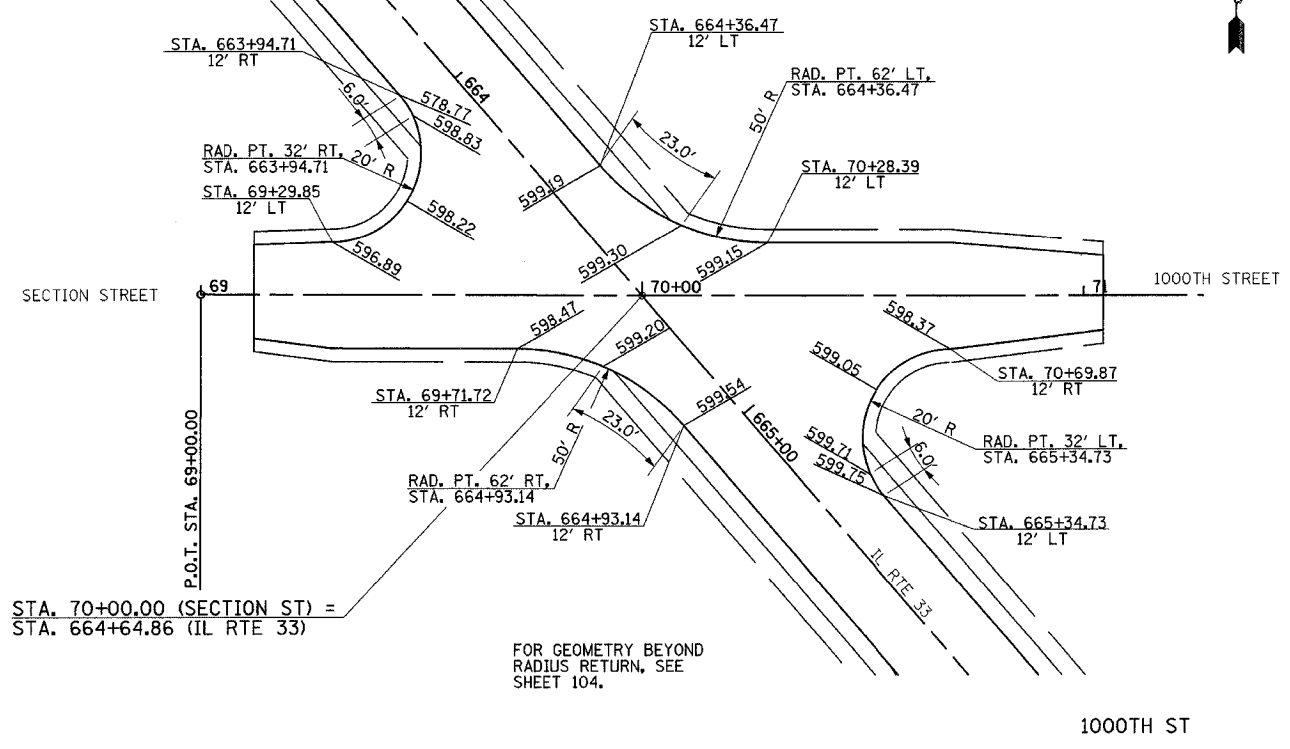
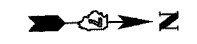


F.A.P. RTE.	SECTION	COUNTY	TOTAL SHEETS	SHEET NO.
95	*	EFFINGHAM	409	138

FED. ROAD DIST. NO. 7 ILLINOIS FED. AID PROJECT
 * (6,7)Y, RS-1, 6B-1, 7B-1, 7BR-2
 CONTRACT NO. 94356



LEGEND

INDICATES PROPOSED GRADE ELEVATION INTERVAL AROUND CURVES IS 20' UNLESS NOTED

REVISIONS	
NAME	DATE

ILLINOIS DEPARTMENT OF TRANSPORTATION
INTERSECTION GEOMETRICS
 SHEET 9 OF 9
 DATE 7/02
 DRAWN BY MLO
 CHECKED BY RMD