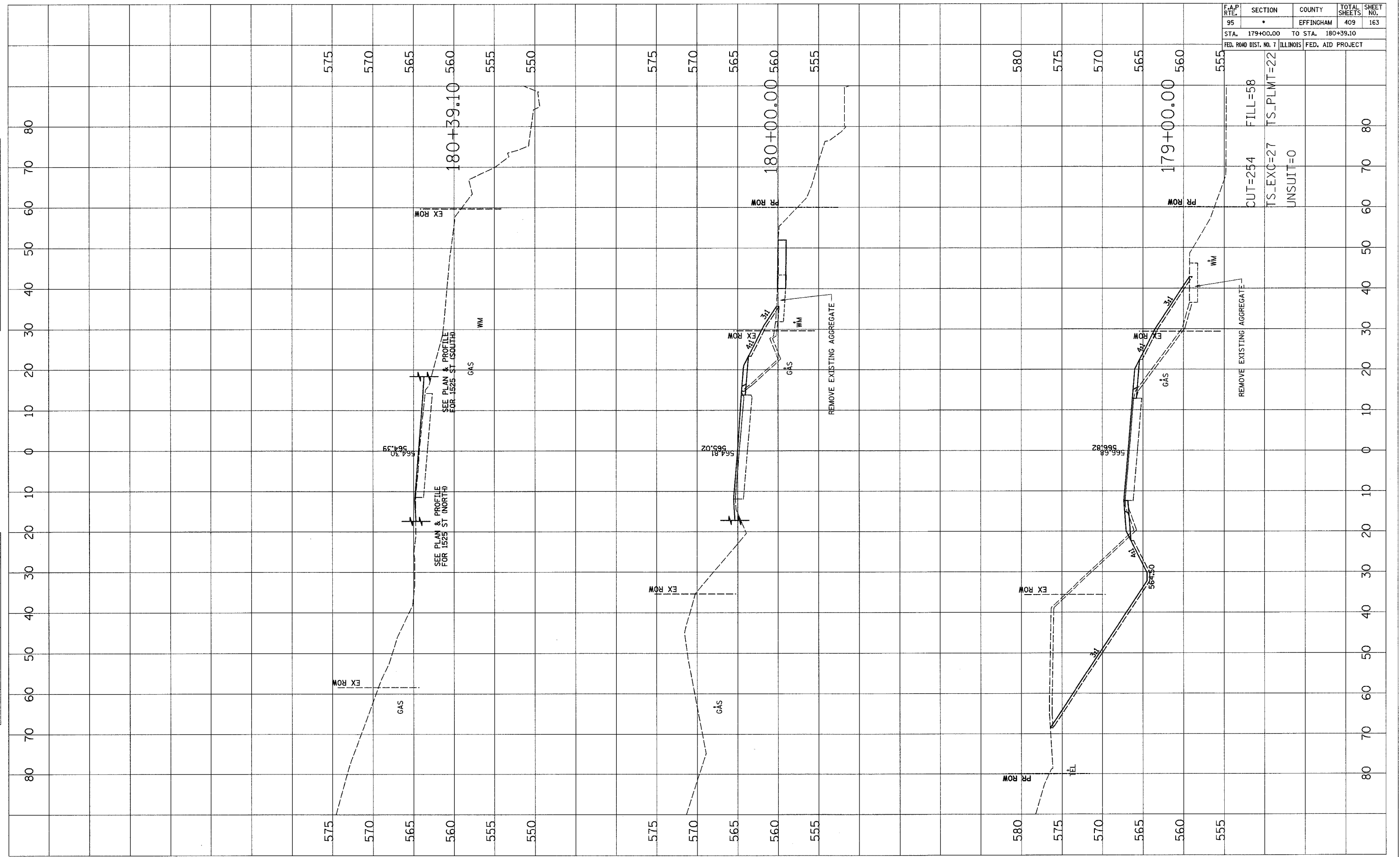


F.A.P. RTE.	SECTION	COUNTY	TOTAL SHEETS	SHEET NO.
95		EFFINGHAM	409	163
STA. 179+00.00 TO STA. 180+39.10		FED. ROAD DIST. NO. 7 ILLINOIS FED. AID PROJECT		



DATE	BY

DATE	BY