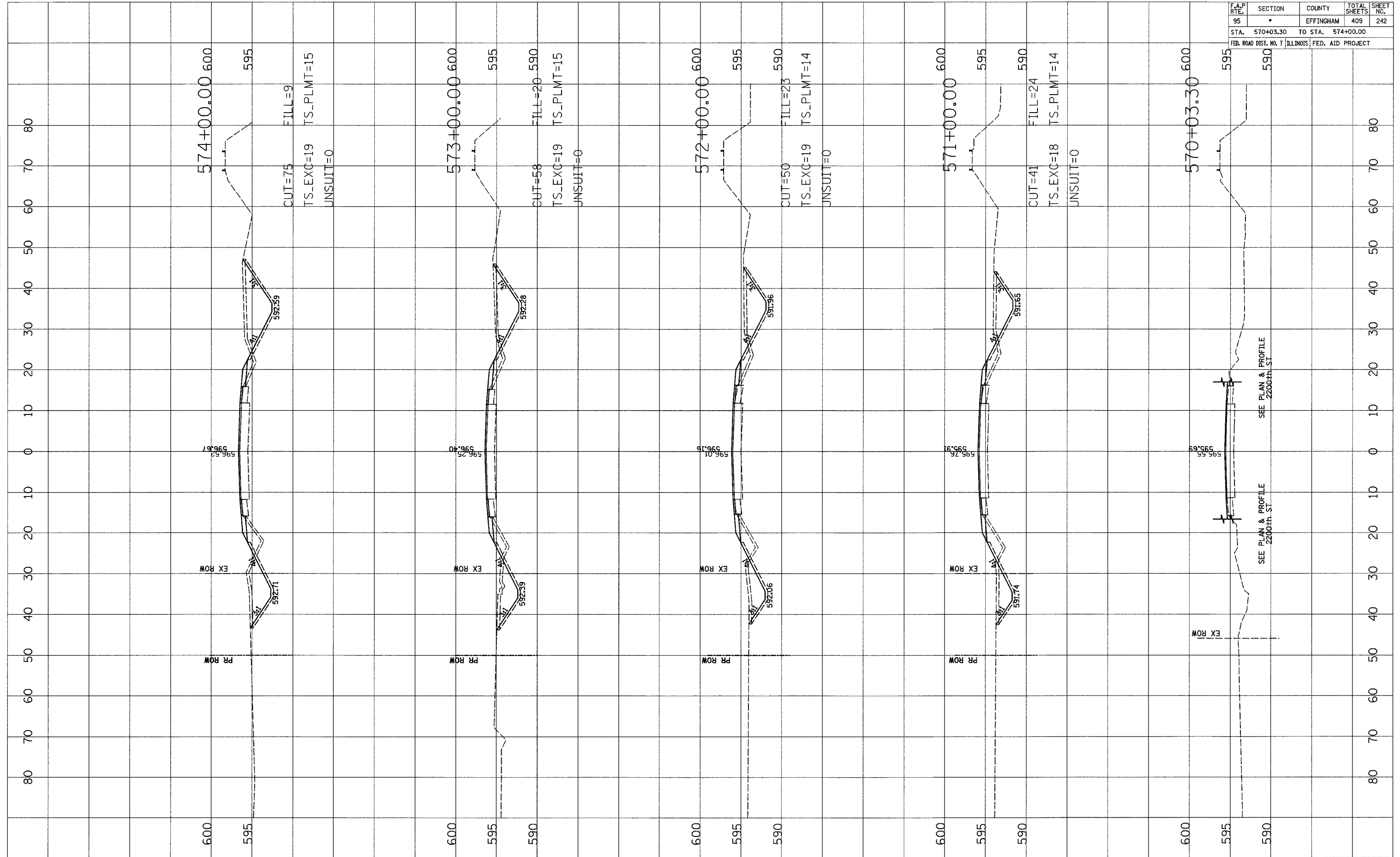


F.A.P. RTE.	SECTION	COUNTY	TOTAL SHEETS	SHEET NO.
95	•	EFFINGHAM	409	242
STA. 570+03.30		TO STA. 574+00.00		
FED. ROAD DIST. NO. 7		ILLINOIS	FED. AID PROJECT	



FINAL SURVEY	DATE
SURVEYED	BY
NOTE BOOK	NO.
AREAS CHECKED	

ORIGINAL SURVEY	DATE
SURVEYED	BY
NOTE BOOK	NO.
AREAS CHECKED	