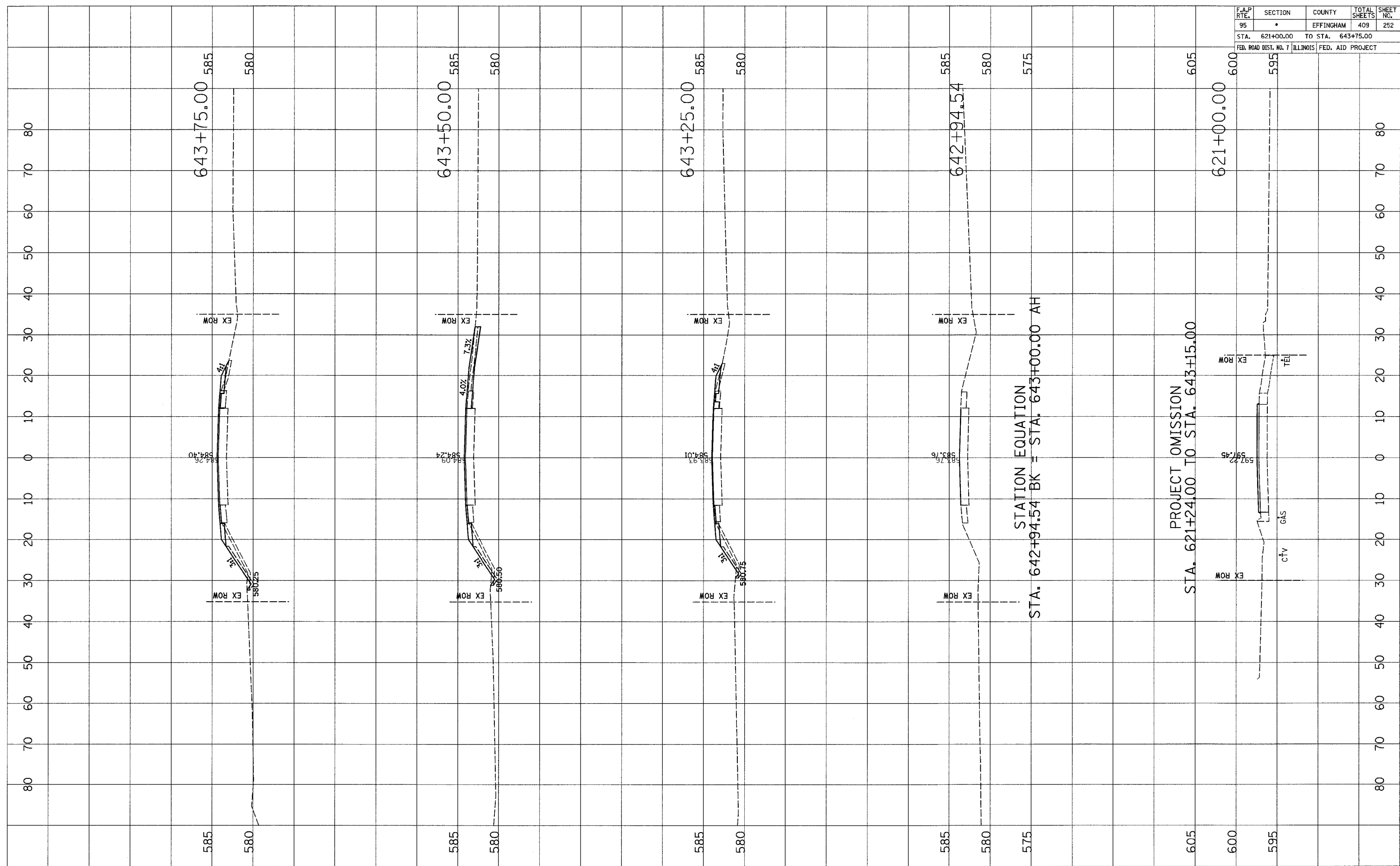


F.A.P. RTE.	SECTION	COUNTY	TOTAL SHEETS	SHEET NO.
95	•	EFFINGHAM	409	252
STA. 621+00.00		TO STA. 643+75.00		
FED. ROAD DIST. NO. 7		ILLINOIS	FED. AID PROJECT	

FINAL SURVEY	BY	DATE
SURVEYED		
NOTE BOOK		
NO.		
AREAS CHECKED		

ORIGINAL SURVEY	BY	DATE
SURVEYED		
NOTE BOOK		
NO.		
AREAS CHECKED		



STATION EQUATION
 STA. 642+94.54 BK = STA. 643+00.00 AH

PROJECT OMISSION
 STA. 621+24.00 TO STA. 643+15.00