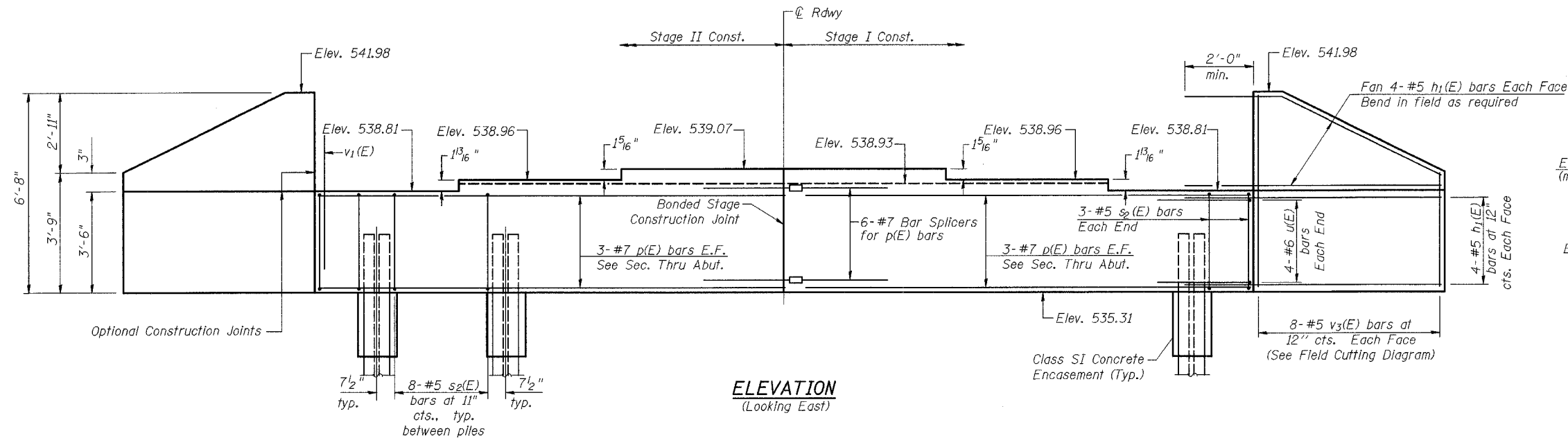


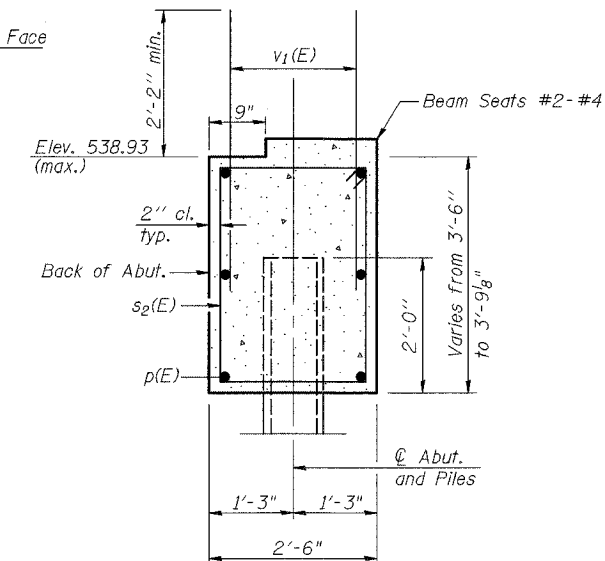
F.A.P. NO.	SECTION	COUNTY	TOTAL SHEETS	SHEET NO.
95	7B-1	EFFINGHAM	409	356
FED. ROAD DIST. NO. 7	ILLINOIS	FED. AID PROJECT		

SHEET NO. 11  
SHEETS 18

CONTRACT NO. 94356



**ELEVATION**  
(Looking East)



**SEC. THRU ABUT.**

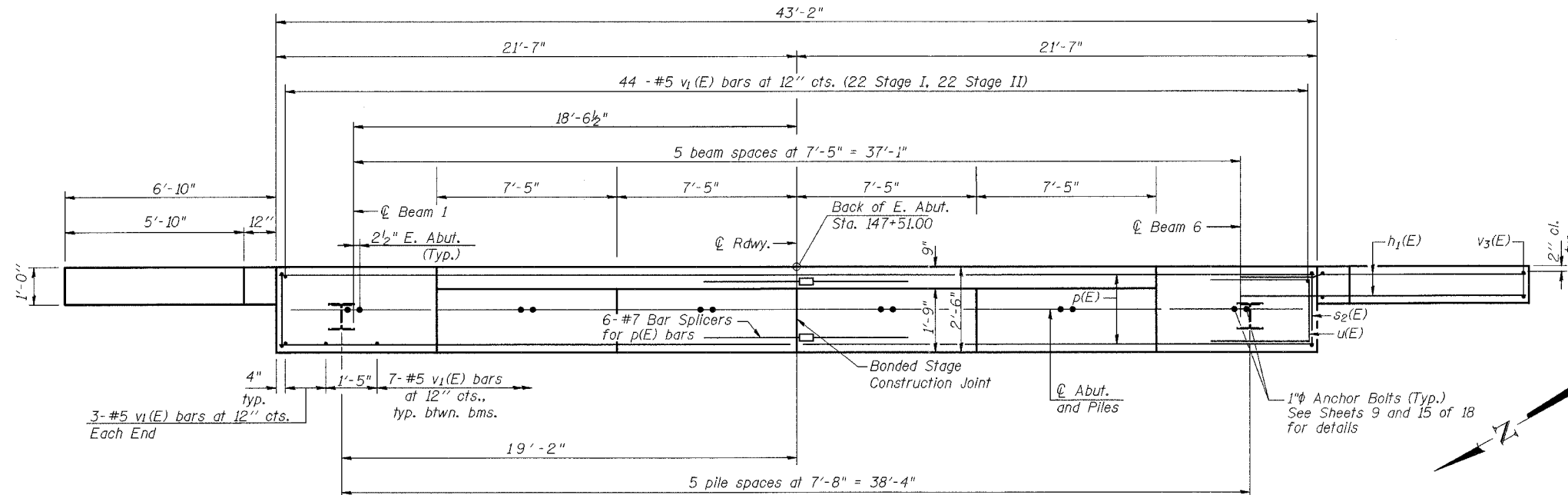
**PILE DATA**

Type: Steel HP 10x57  
Capacity: Nominal Required Bearing: 453kips  
Allowable Resistance Available: 124kips\*  
Est. Length: 26'  
No. Required: 5 + 1 Test Pile  
\* Limit capacity to 7.4 ksi per pile due to negative skin friction.

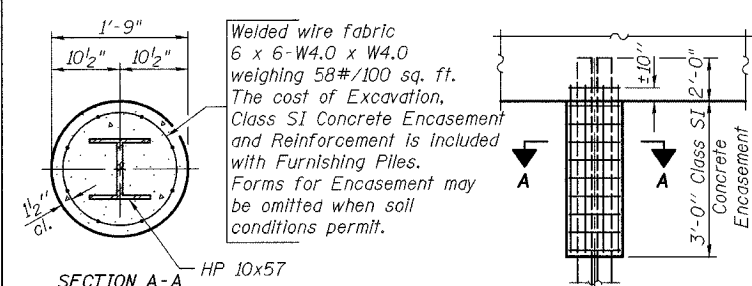
**E. ABUT.**

**BILL OF MATERIAL**

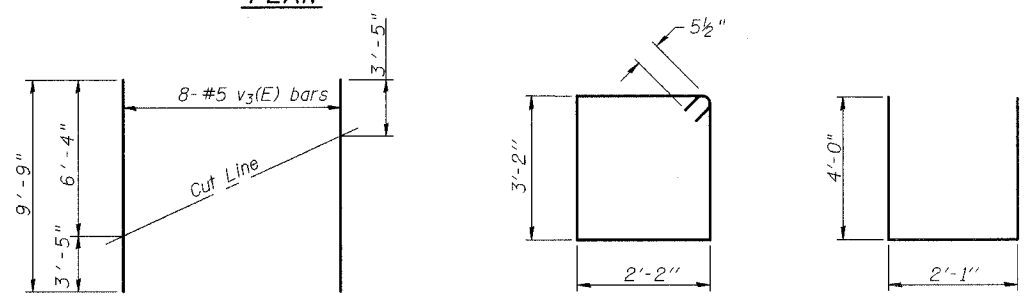
Bar	No.	Size	Length	Shape
h <sub>1</sub> (E)	32	#5	8'-8"	—
p(E)	12	#7	21'-3"	—
s <sub>2</sub> (E)	46	#5	11'-7"	□
u(E)	8	#6	10'-1"	—
v <sub>1</sub> (E)	85	#5	4'-4"	—
v <sub>3</sub> (E)	16	#5	9'-9"	—
Concrete Structures		Cu. Yd.	17.4	
Reinforcement Bars, Epoxy Coated		Pound	2040	
Structure Excavation		Cu. Yd.	132	
Furnishing Steel Piles HP 10x57		Ft.	130	
Driving Piles		Ft.	130	
Test Pile Steel HP 10x57		Each	1	



**PLAN**



**PILE ENCASEMENT DETAIL**



**FIELD CUTTING DIAGRAM**

Order v<sub>3</sub>(E) full length. Cut as shown and use remainder of bars in opposite face.

**BAR s<sub>2</sub>(E)**

**BAR u(E)**

Notes:  
Pour steps monolithically with cap.  
The Steel H Piles shall be according to AASHTO M270 Grade 50.  
The Test Pile shall be driven to 110 percent of the nominal required bearing indicated in the Pile Data information.  
Space reinforcement to miss anchor bolts.  
All edges to have 3/4 inch chamfer except as noted.

ILLINOIS DEPARTMENT OF TRANSPORTATION  
**EAST ABUTMENT**  
ILLINOIS ROUTE 33 OVER  
BIG SALT CREEK  
F.A.P. ROUTE 95  
SECTION 7B-1  
EFFINGHAM COUNTY  
STA. 146+62.50  
STRUCTURE NUMBER 025-0101

DATE: OCT. 2003

DRAWN BY: NJV  
CHECKED BY: PBB/SJK