

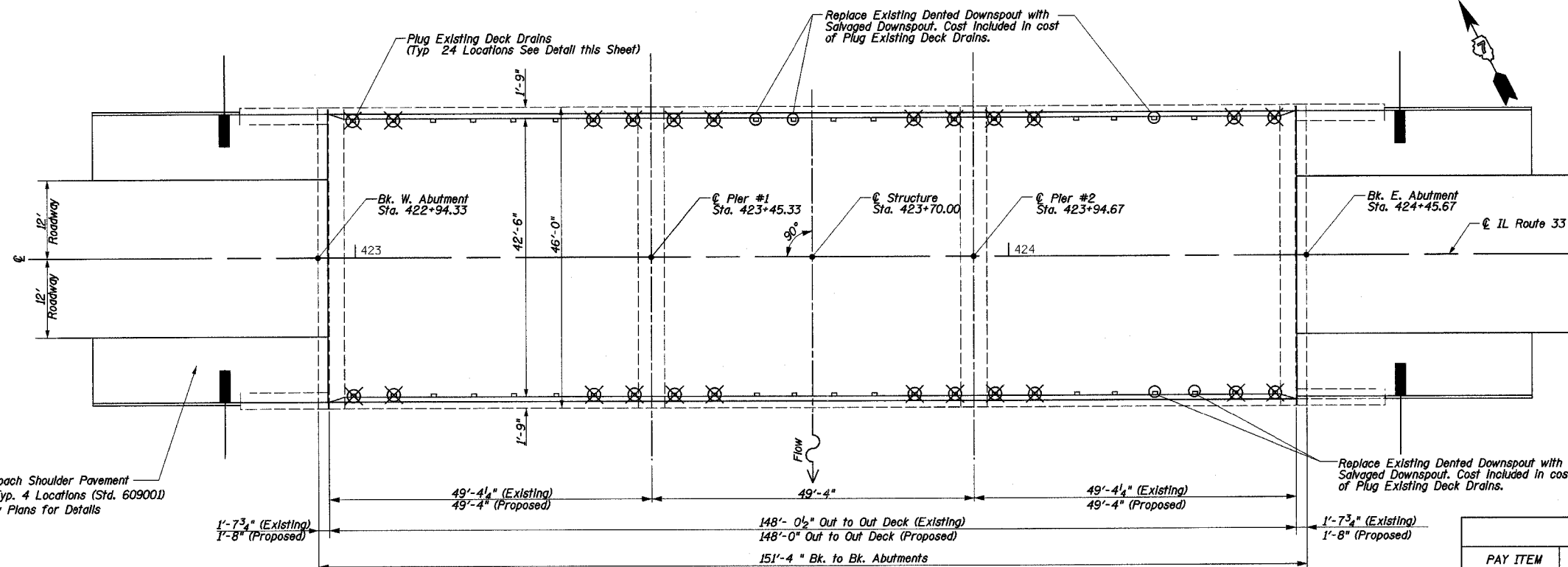
THE EXISTING STRUCTURE, BUILT IN 1973, IS A THREE SPAN P.P.C. I-BEAM BRIDGE WITH SOLID PIERS AND PILE CAP ABUTMENTS.

STATE OF ILLINOIS
DEPARTMENT OF TRANSPORTATION

F.A.P. RTE.	SECTION	COUNTY	TOTAL SHEETS	SHEET NO.
95	TBR-2	EFFINGHAM	409	363
FED. ROAD DIST. NO. 7		ILLINOIS	FED. AID PROJECT	

CONTRACT NO. 94356

SHEET NO. 1
SHEETS 8



EXISTING PLAN

TOTAL BILL OF MATERIAL			
PAY ITEM	ITEM	UNIT	QUANTITY
44000910	HOT-MIX ASPHALT SURFACE REMOVAL (DECK)	SQ YD	654
50102400	CONCRETE REMOVAL	CU YD	31.3
50300255	CONCRETE SUPERSTRUCTURE	CU YD	31.2
50300260	BRIDGE DECK GROOVING	SQ YD	623
50800205	REINFORCEMENT BARS, EPOXY COATED	POUND	4320
50800515	BAR SPLICERS	EACH	24
52000110	PREFORMED JOINT STRIP SEAL	FOOT	90
X0321468	PLUG EXISTING DECK DRAINS	EACH	24
Z0006110	BRIDGE DECK MICROSILICA CONCRETE OVERLAY	SQ YD	654
Z0006202	BRIDGE DECK HYDRO-SCARIFICATION 3/4"	SQ YD	654
Z0016002	DECK SLAB REPAIR (FULL DEPTH, TYPE II)	SQ YD	22.6

GENERAL NOTES

This work shall be constructed in accordance with the plans, the Standard Specifications for Road and Bridge Construction adopted Jan. 1, 2007, and the Special Provisions included in the proposal.

The work included at this bridge consists of: Complete Removal and Replacement of the existing expansion joints, Deck Drain Plugging and Repair. Removal of the existing bituminous wearing surface and waterproofing membrane system, partial and full depth patching of the existing bridge deck, construction of the bridge deck microsilica concrete overlay, and any other work necessary to complete this rehabilitation.

Plan dimensions and details relative to existing plans are subject to routine variations. The Contractor shall field verify existing dimensions and details affecting new construction and make necessary approved adjustments prior to construction or ordering of materials. Such variations shall not be cause for additional compensation for a change in scope of the work, however, the Contractor will be paid for the quantity actually furnished based upon the unit price bid for the work.

Following the removal of the bituminous surface and waterproofing, the bridge deck surface shall be scarified to a depth of 3/4". The bridge deck microsilica concrete overlay shall be constructed to a thickness of 2 1/4".

Reinforcement bars shall conform to the requirements of ASTM A 706 Gr 60 (IL Modified). See Special Provisions.

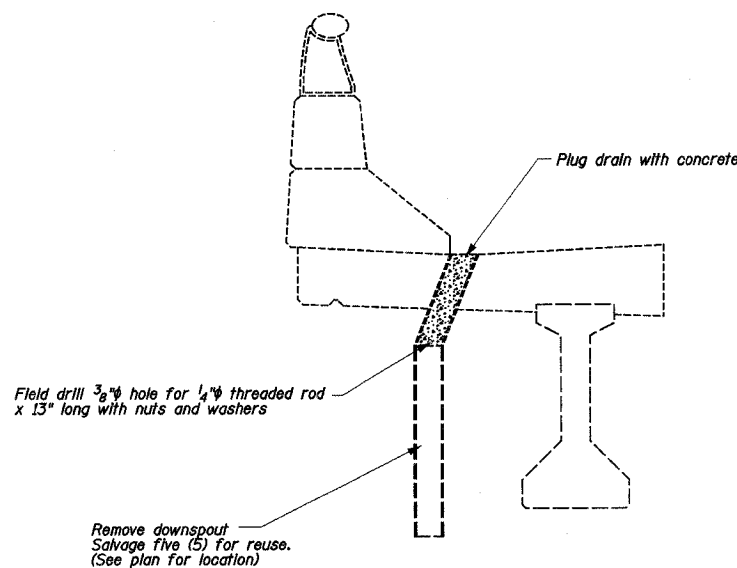
Joint openings shall be adjusted according to Article 520.04 of the Standard Specifications when the deck is poured at an ambient temperature other than 50°F.

All Structural Steel shall conform to AASHTO M270 Grade 36.

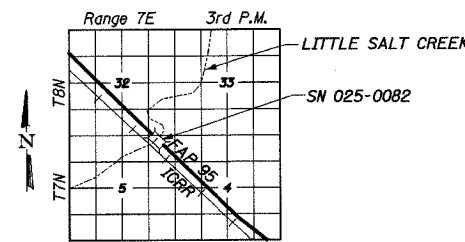
New Structural Steel shall be shop painted with Inorganic zinc-rich primer as per AASHTO M300, Type 1. Cost included in cost of Preformed Joint Strip Seal.

Work will be completed utilizing stage construction with one lane of IL Rte 33 open to traffic. See roadway stage construction drawings for traffic control details.

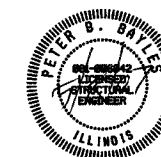
Reinforcement bars designated (E) shall be epoxy coated.



PLUG EXISTING DECK DRAIN DETAIL



LOCATION SKETCH



Peter B. Bayles
Peter B. Bayles, P.E., S.E. Date
Structural Engineer License No. 081-006042
Expiration Date: 11/30/2008

GENERAL PLAN
IL ROUTE 33 OVER
LITTLE SALT CREEK
F.A.P. 95 - SECTION TBR-2
EFFINGHAM COUNTY
SN 025-0082