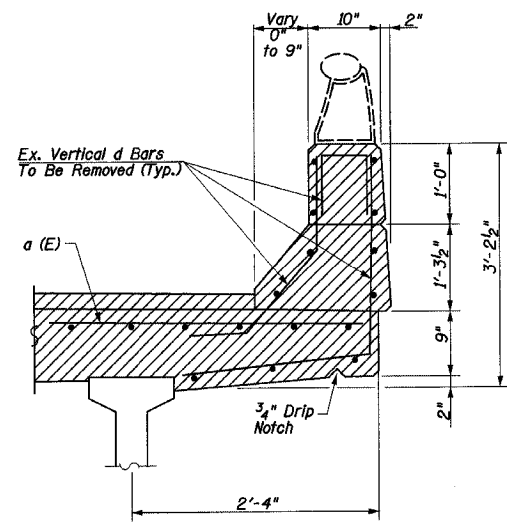


STATE OF ILLINOIS  
DEPARTMENT OF TRANSPORTATION

F.A.P. RTE.	SECTION	COUNTY	TOTAL SHEETS	SHEET NO.	SHEET NO. 4 SHEETS 8
95	TBR-2	EFFINGHAM	409	366	
FED. ROAD DIST. NO. 7	ILLINOIS	FED. AID PROJECT			

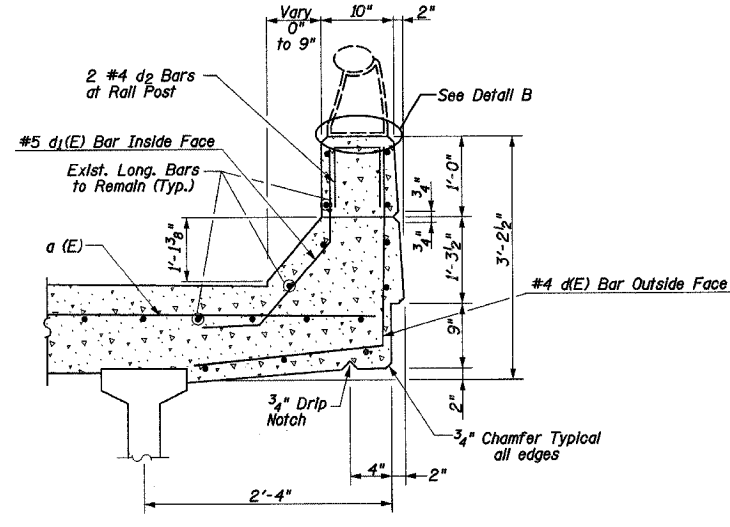
CONTRACT NO. 94356



**EXISTING SECTION THROUGH PARAPET & SOFFIT**

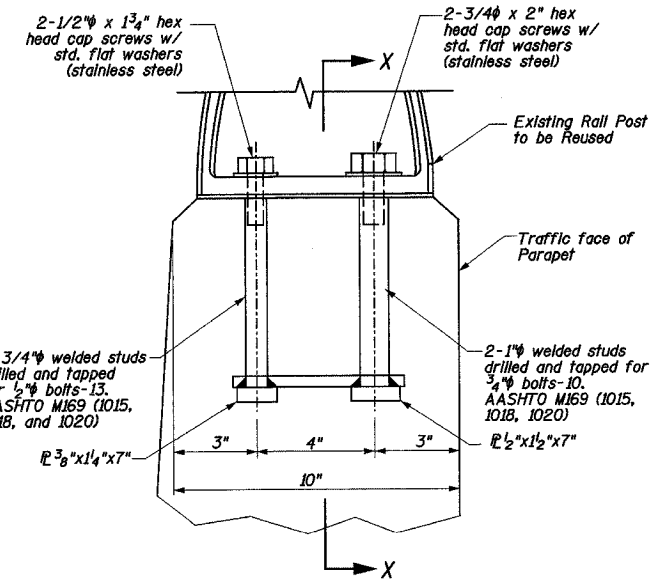
Concrete Removal  
(See Isometric on Sheet 3 of 8)

Note: For clarity only proposed reinforcement critical to parapet placement is shown.



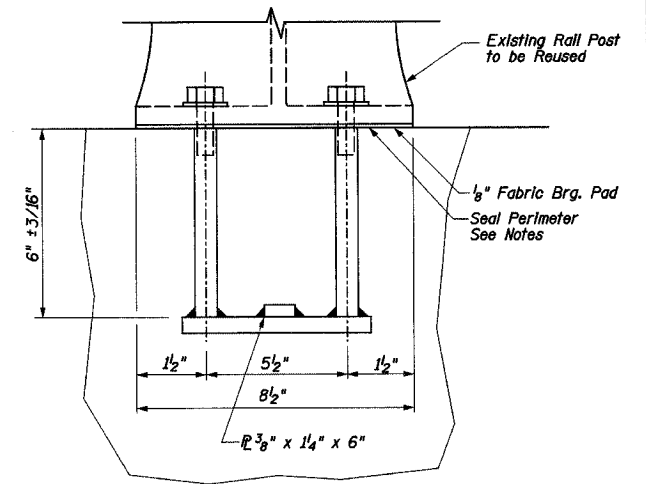
**PROPOSED SECTION THROUGH PARAPET & SOFFIT**

Concrete Superstructure

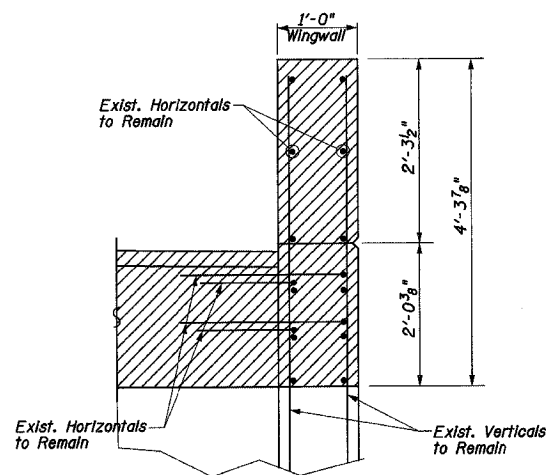


**DETAIL B**

Cost of Rail Post Anchorage Included in the Cost of "Concrete Superstructures"

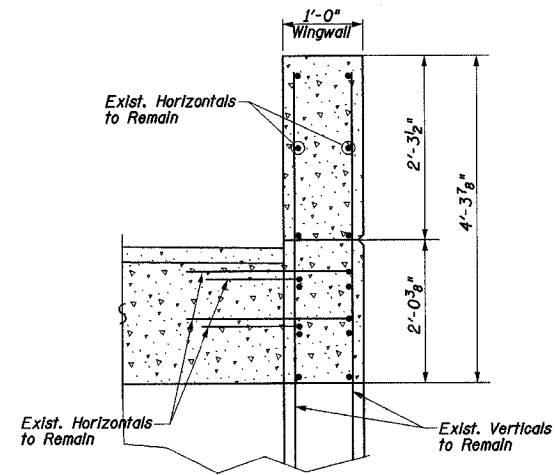


**SECTION X-X**



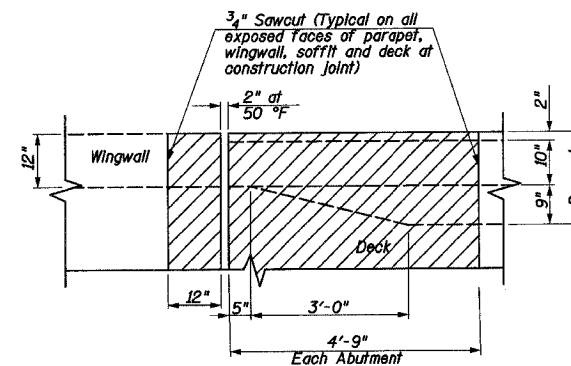
**EXISTING SECTION THROUGH WINGWALL**

Concrete Removal  
(See Isometric on Sheet 3 of 8)



**PROPOSED SECTION THROUGH WINGWALL**

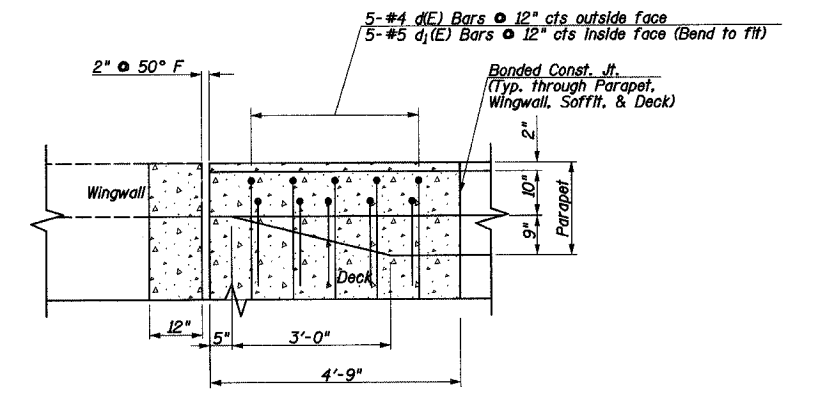
Concrete Superstructure



**PLAN - CONCRETE REMOVAL**

(Typical at Each Corner of Structure)

Concrete Removal  
(See Isometric on Sheet 3 of 8)



**PLAN - CONCRETE REPLACEMENT**

(Typical at Each Corner of Structure)

Concrete Superstructure

**DETAIL A**

**NOTES**

EXISTING LONGITUDINAL REINFORCEMENT BARS AND THREADED DOWEL BARS SHALL BE CLEANED, STRAIGHTENED, AND USED FOR NEW CONSTRUCTION. EXISTING TRANSVERSE REINFORCEMENT BARS IN THE REMOVAL AREA SHALL BE REMOVED AND REPLACED. NEW REINFORCEMENT BARS AND BAR SPLICERS USED FOR STAGE CONSTRUCTION SHALL BE EPOXY COATED.

ANY REINFORCEMENT BARS THAT ARE DAMAGED DURING CONCRETE REMOVAL SHALL BE REPAIRED OR REPLACED USING AN APPROVED BAR SPLICER OR ANCHORAGE SYSTEM (COST INCLUDED IN CONCRETE REMOVAL).

REMOVAL OF THE EXISTING EXPANSION JOINT WILL NOT BE PAID FOR SEPARATELY BUT SHALL BE INCLUDED IN THE COST OF CONCRETE REMOVAL.

INTERFERENCE IS EXPECTED FROM THE EXISTING ALUMINUM RAIL POSTS. THE CONTRACTOR MAY ELECT TO REMOVE AND RE-ERECT THE EXISTING BRIDGE RAIL AND POSTS TO COMPLETE THE WORK AS DETAILED. CARE SHALL BE TAKEN NOT TO DAMAGE EXISTING RAIL POSTS TO REMAIN. THE BASE OF THE RAIL POST SHALL BE SEALED WITH TWO COMPONENT NON-STAINING GRAY SEALING COMPOUND WITH POLYSULFIDE LIQUID POLYMERS-GUN GRADE WITH PRIMER. ALL LABOR, EQUIPMENT, AND MATERIALS NECESSARY FOR REMOVING AND REINSTALLING THE BRIDGE RAIL POST SHALL BE INCLUDED IN THE COST FOR "CONCRETE SUPERSTRUCTURE".

EXPANSION JOINT DETAILS  
IL ROUTE 33 OVER  
LITTLE SALT CREEK  
F.A.P. 95 - SECTION TBR-2  
EFFINGHAM COUNTY  
SN 025-0082