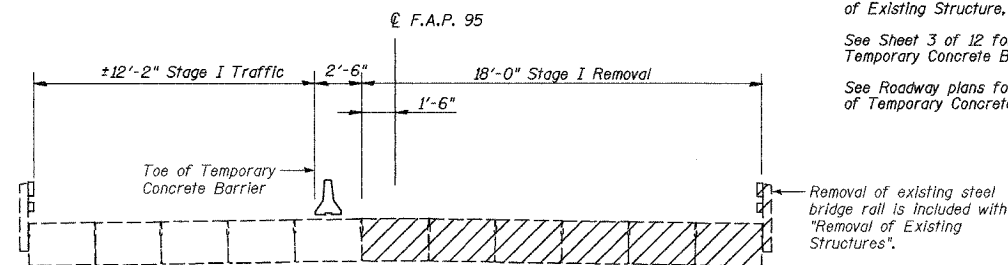


| F.A.P. RTE. | SECTION | COUNTY | TOTAL SHEETS | SHEET NO. |
|-----------------------|---------|-----------|------------------|-----------|
| 95 | 6B-1 | EFFINGHAM | 409 | 372 |
| FED. ROAD DIST. NO. 7 | | ILLINOIS | FED. AID PROJECT | |

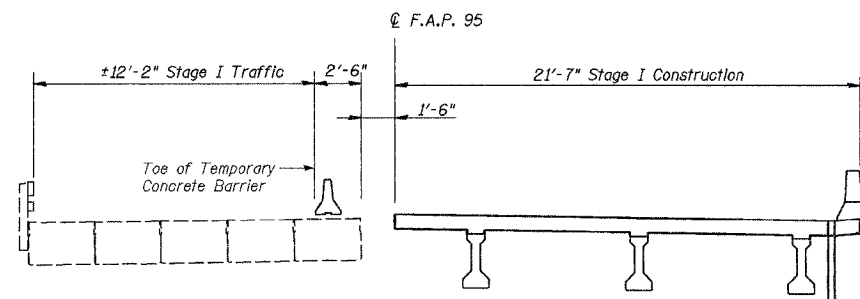
SHEET NO. 2
SHEETS 12

CONTRACT NO. 94356

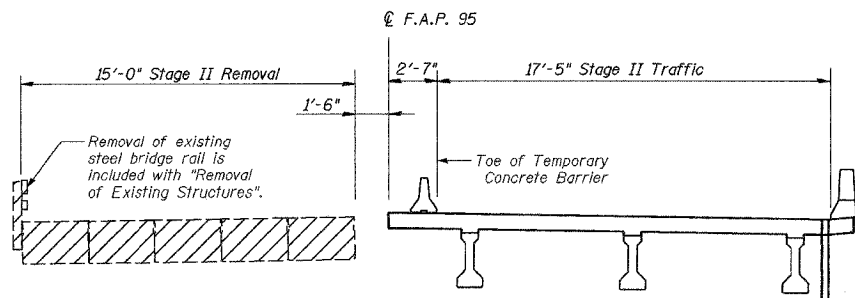
Notes:
Hatched areas indicate "Removal of Existing Structure, No. 2".
See Sheet 3 of 12 for details of Temporary Concrete Barrier.
See Roadway plans for quantity of Temporary Concrete Barrier.



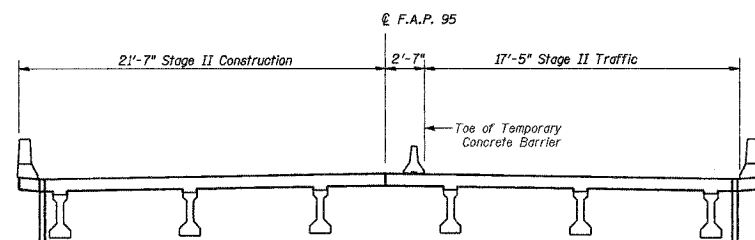
STAGE I REMOVAL
(Looking East)



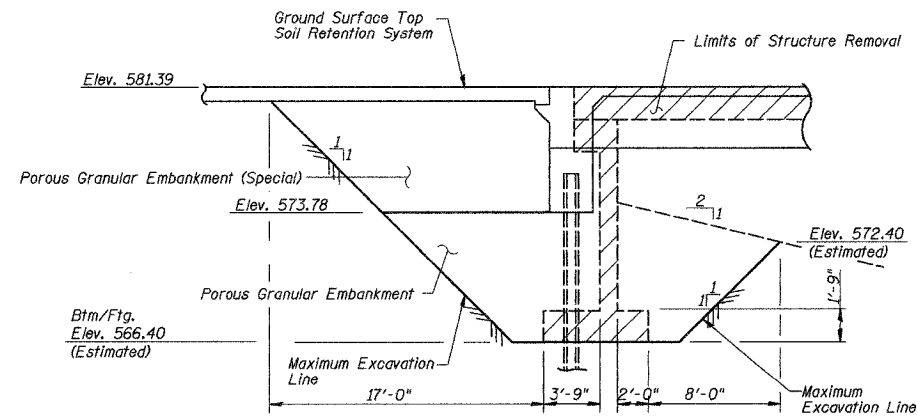
STAGE I CONSTRUCTION
(Looking East)



STAGE II REMOVAL
(Looking East)



STAGE II CONSTRUCTION
(Looking East)



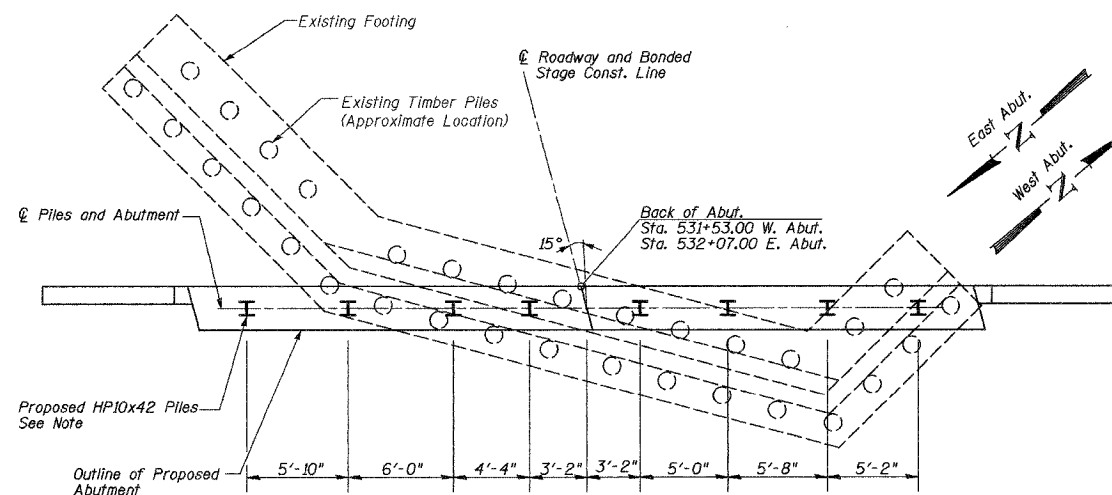
TEMPORARY SOIL RETENTION SYSTEM

(West Abutment Shown, East Abutment Similar)
All dimensions are at right <'s to proposed abutment unless otherwise noted.

A cantilevered sheet piling design does not appear feasible and additional members or other retention systems may be necessary. The Contractor shall submit a temporary soil retention system design including plan details and calculations for review and acceptance by the Engineer.

The Contractor shall remove soil behind existing abutment prior to removing superstructure.

The porous granular embankment (special) shall extend 2'-0" from the end of each wingwall.



PILE LAYOUT

Notes:

Contractor to excavate to bottom of existing footing and drive piles to miss existing timber piles. Piles may be moved up to one foot (1') in either direction along axis of ` of piles. Contractor to coat exposed piles with bitumin from the bottom of the existing footing to the bottom of abutment. Cost of bitumin included in cost of "Driving Piles". Backfill with Porous Granular Embankment to the bottom of abutment cap Elev. 573.78. Cost of Porous Granular Embankment included with Removal of Existing Structure, No. 2. Embankment cone for each stage of construction shall be built prior to constructing abutment cap.

The cost of the excavation required to excavate to the bottom of the footing in required locations shall be included with "Removal of Existing Structures".

See Sheet 9 of 12 for Abutment Details.

ILLINOIS DEPARTMENT OF TRANSPORTATION
STAGE CONSTRUCTION
ILLINOIS ROUTE 33 OVER
BISHOP CREEK
F.A.P. RTE. 95
SECTION 6B-1
EFFINGHAM COUNTY
Sta. 531+80
STRUCTURE NUMBER 025-0097

DATE: APR. 2002

DRAWN BY: BDM
CHECKED BY: SJK