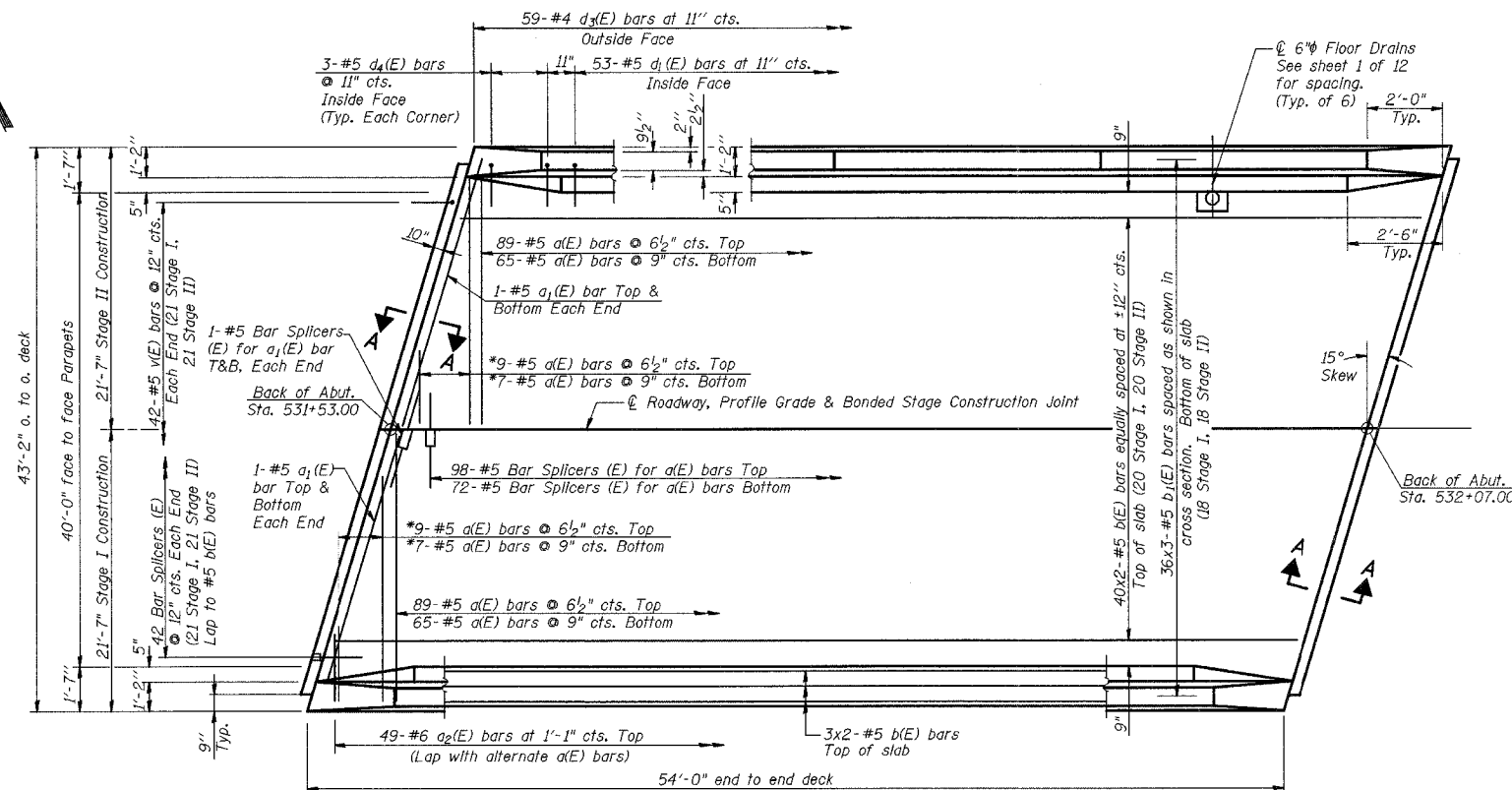


F.A.P. R/L	SECTION	COUNTY	TOTAL SHEETS	SHEET NO.
95	6B-1	EFFINGHAM	409	375
FED. ROAD DIST. NO. 7	ILLINOIS	FED. AID PROJECT		

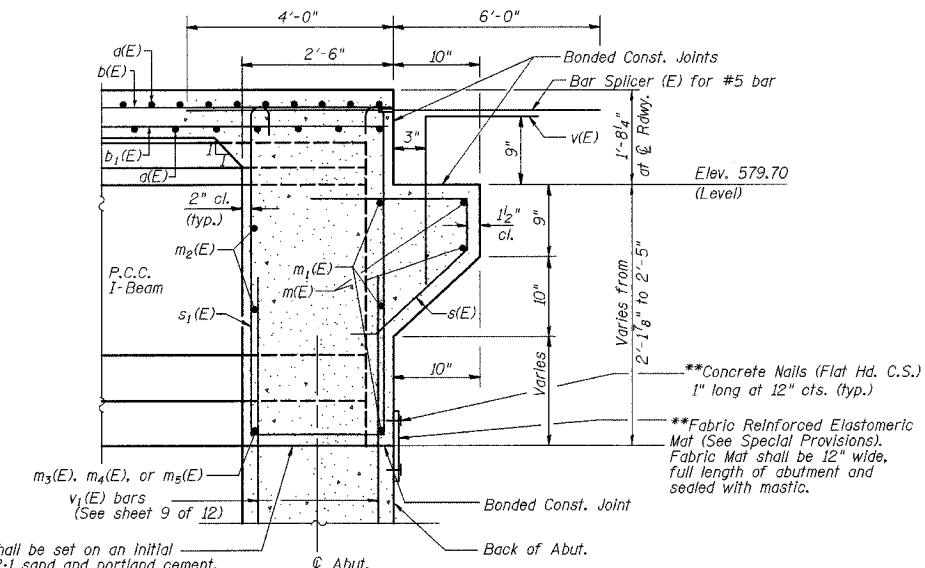
SHEET NO. 5  
SHEETS 12

CONTRACT NO. 94356



\* Order a(E) bars full length. Cut bars in field to fit skew and use the remainder of bars at other end of deck.

**PLAN**  
**MIN BAR LAP**  
#5 bar = 1'-8"

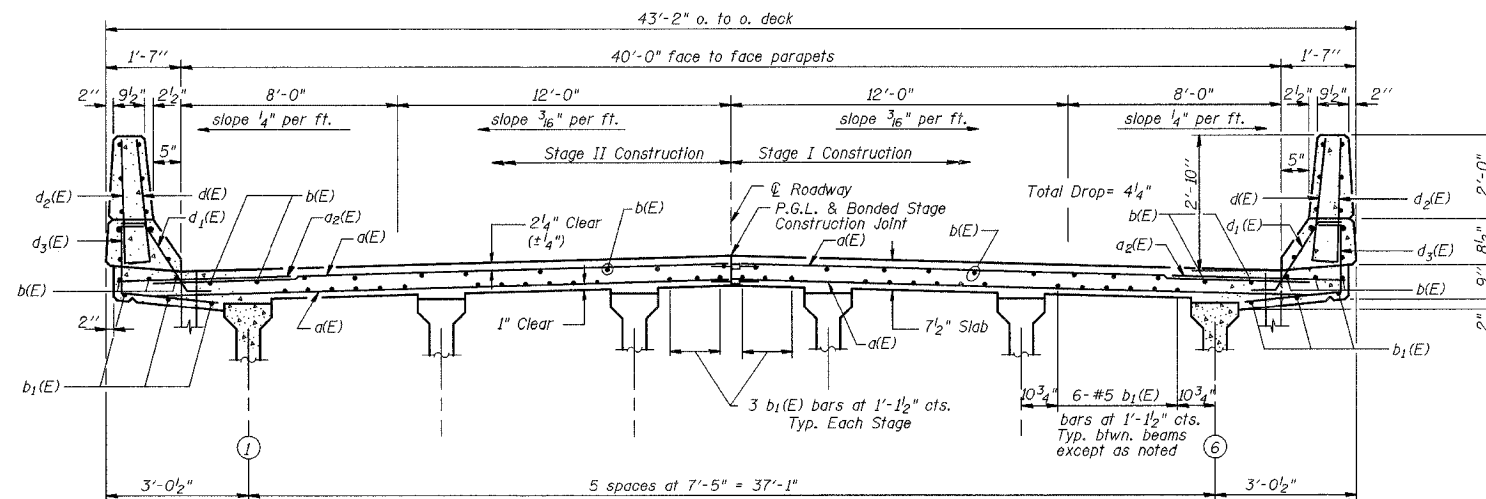


\*\*Beam ends shall be set on an initial 1/2" Min. grout (2:1 sand and portland cement, very dry mix) to provide full bearing. Any excess grout squeezed out from under the beam shall be removed.

**SECTION A-A**

(Dim. at Ft. Ls.)

\*\*Cost included with "Concrete Structures".



**CROSS SECTION**  
(Looking East)

**NOTES:**

Bars indicated thus 40x2 #5 etc. indicates 40 lines of bars with 2 lengths per line.  
See sheet 6 of 12 for superstructure details, parapet reinforcement and Bill of Material.  
See sheet 7 of 12 for abutment diaphragm details.  
See sheet 10 of 12 for bar splicer details.

ILLINOIS DEPARTMENT OF TRANSPORTATION  
SUPERSTRUCTURE  
ILLINOIS ROUTE 33 OVER  
BISHOP CREEK  
F.A.P. RTE. 95  
SECTION 6B-1  
EFFINGHAM COUNTY  
Sta. 531+80  
STRUCTURE NUMBER 025-0097

DATE: APR. 2002

DRAWN BY: BDM  
CHECKED BY: SJK