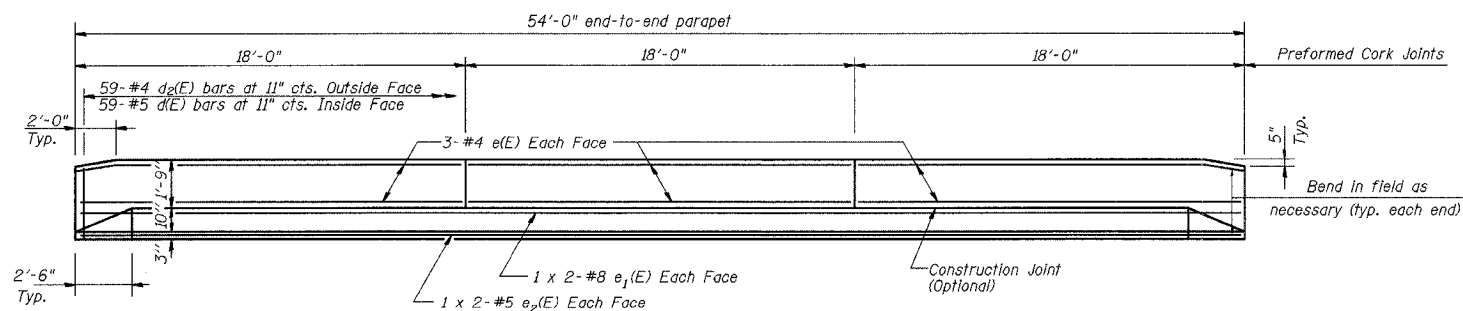


F.A.P. RTE.	SECTION	COUNTY	TOTAL SHEETS	SHEET NO.
95	6B-1	EFFINGHAM	409	376
FED. ROAD DIST. NO. 7	ILLINOIS	FED. AID PROJECT		

SHEET NO. 6  
SHEETS 12

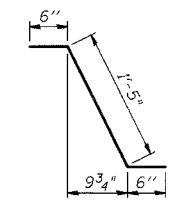
CONTRACT NO. 94356



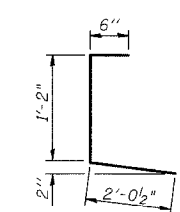
**INSIDE ELEVATION OF PARAPET**

**MIN BAR LAPS**

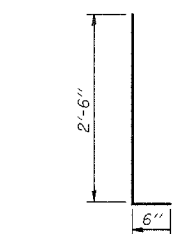
- #4 bars = 1'-8"
- #5 bars = 2'-2"
- #8 bars = 4'-6"



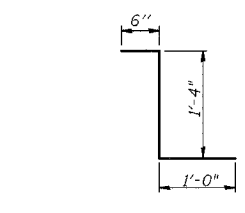
**BAR d1(E)**



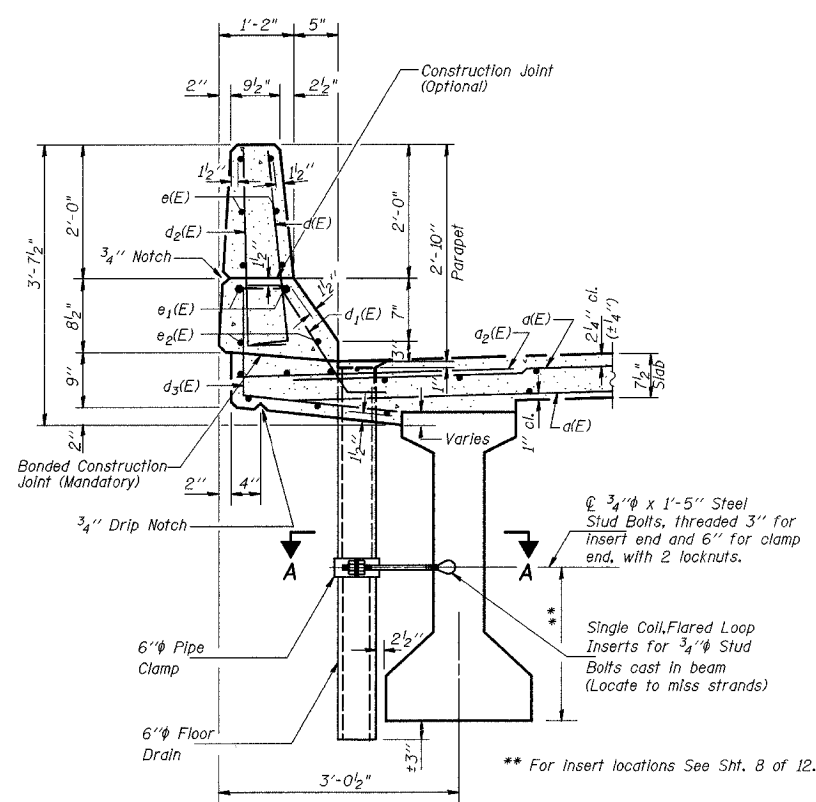
**BAR d3(E)**



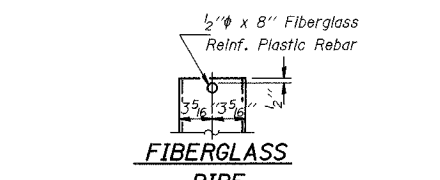
**BARS d(E) & d2(E)**



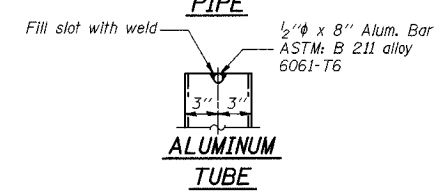
**BAR d4(E)**



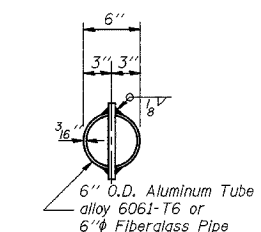
**SECTION THRU PARAPET**



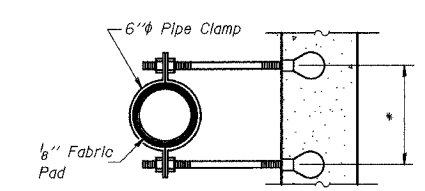
**FIBERGLASS PIPE**



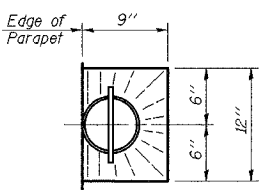
**ALUMINUM TUBE**



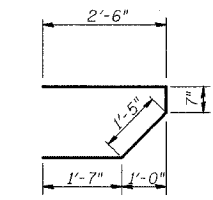
**TOP PLAN (Showing Aluminum Tube)**



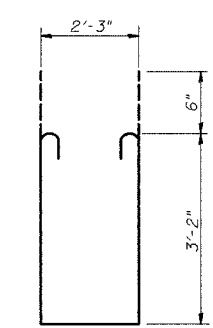
**SECTION A-A**



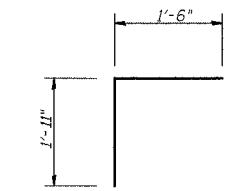
**TOP PLAN**



**BAR s(E)**



**BAR s1(E)**

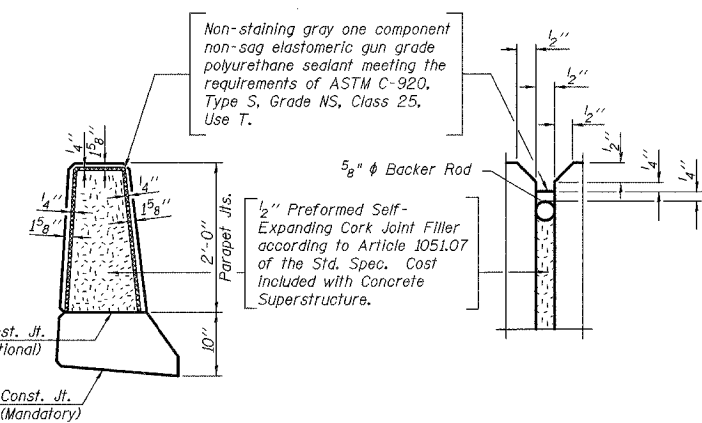


**BAR v(E)**

**SUPERSTRUCTURE BILL OF MATERIAL**

Bar	No.	Size	Length	Shape
d1(E)	340	#5	19'-11"	—
d2(E)	8	#5	20'-7"	—
d3(E)	98	#6	4'-0"	—
b(E)	92	#5	27'-8"	—
b1(E)	108	#5	19'-0"	—
d(E)	118	#5	3'-0"	—
d1(E)	106	#5	2'-5"	—
d2(E)	118	#4	3'-0"	—
d3(E)	118	#4	3'-8 1/2"	—
d4(E)	12	#5	2'-10"	—
e(E)	36	#4	17'-8"	—
e1(E)	8	#8	29'-1"	—
e2(E)	8	#5	27'-11"	—
m(E)	8	#6	21'-3"	—
m1(E)	12	#6	22'-0"	—
m2(E)	24	#6	9'-2"	—
m3(E)	8	#6	5'-9"	—
m4(E)	4	#6	2'-0"	—
m5(E)	4	#6	2'-9"	—
s(E)	84	#5	6'-1"	—
s1(E)	72	#4	9'-7"	—
v(E)	84	#5	3'-5"	—
Reinforcement Bars, Epoxy Coated		Pound	17470	
Concrete Superstructure		Cu Yds	95.6	
Floor Drains		Each	6	
Bar Splicers		Each	274	

Bars indicated thus 40x2-#5 etc. Indicates 40 lines of bars with 2 lengths per line.



**PARAPET JOINT DETAILS**

**NOTES:**

- Fiberglass pipe shall conform to ASTM D2996, with short-time rupture strength hoop tensile stress of 30,000 p.s.i. minimum. The surface of the Fiberglass pipe shall be free of bond inhibiting agents.
- The exterior surfaces of the furnished drains shall be coated or pigmented by the manufacturer with a pigment that matches the color of the concrete.
- The clamping device and inserts shall be galvanized in accordance with AASHTO M 232.

ILLINOIS DEPARTMENT OF TRANSPORTATION  
**SUPERSTRUCTURE DETAILS**  
 ILLINOIS ROUTE 33 OVER  
 BISHOP CREEK  
 F.A.P. RTE. 95  
 SECTION 6B-1  
 EFFINGHAM COUNTY  
 Sta. 531+80  
 STRUCTURE NUMBER 025-0097

DATE: APR. 2002  
 DRAWN BY: BDM  
 CHECKED BY: SJK