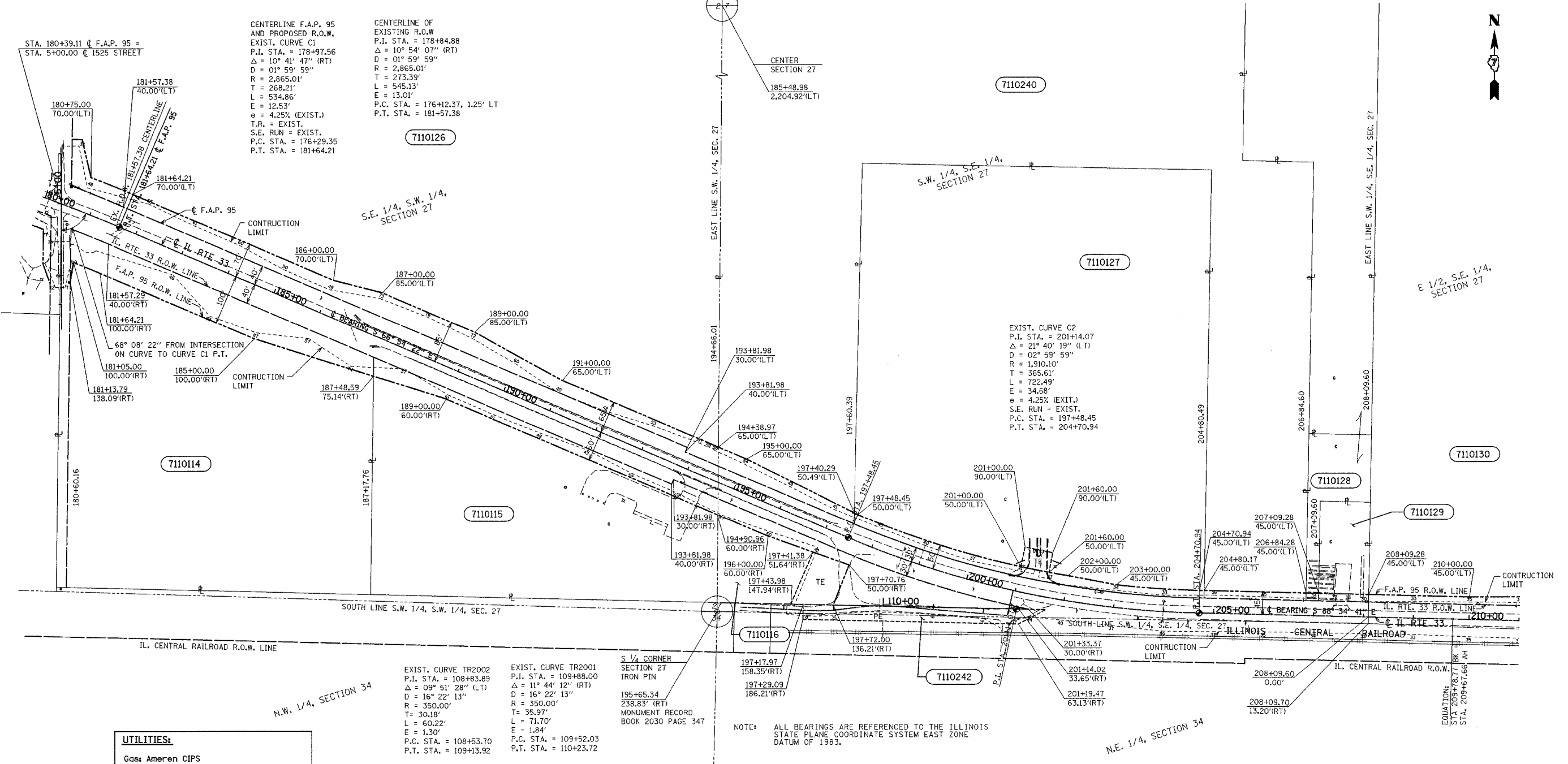


T 8 N R 6 E 3rd PM TEUTOPOLIS TWP

F.A.P. RTE.	SECTION	COUNTY	TOTAL SHEETS	SHEET NO.
95		EFFINGHAM	409	387
FED. ROAD DIST. NO. 7 ILLINOIS FED. AID PROJECT				
• (6,7)Y, RS-1, 6B-1, 7B-1 & 7BR-2				
CONTRACT NO. 94356				

•DGN-SPEC•
•DATE•



UTILITIES:
 Gas: Ameren CIPS
 Power: Ameren CIPS
 Norris Electric
 Water: City of Effingham
 EJ Water Corporation
 Village of Dieterich
 San. Sewer: Village of Dieterich
 Telephone: Consolidated Communications
 Frontier Communications
 Montrose Mutual
 CATV: Clear Vision Systems Inc.
 Pipeline: Trunkline Gas
 Marathon Pipeline

EXIST. CURVE TR2002
 P.I. STA. = 108+83.89
 Δ = 09° 51' 28" (LT)
 D = 16° 22' 13"
 R = 350.00'
 T = 30.18'
 L = 60.22'
 E = 1.30'
 P.C. STA. = 108+53.70
 P.T. STA. = 109+13.92

EXIST. CURVE TR2001
 P.I. STA. = 109+88.00
 Δ = 11° 44' 12" (RT)
 D = 16° 22' 13"
 R = 350.00'
 T = 35.97'
 L = 71.70'
 E = 1.84'
 P.C. STA. = 109+52.03
 P.T. STA. = 110+23.72

S 1/4 CORNER SECTION 27 IRON PIN
 195+65.34
 238.83' (RT)
 MONUMENT RECORD BOOK 2030 PAGE 347

NOTE: ALL BEARINGS ARE REFERENCED TO THE ILLINOIS STATE PLANE COORDINATE SYSTEM EAST ZONE DATUM OF 1983.

PARCEL	OWNER	ADD	EXIST	EASEMENT	REM	INST	MICROFLM	DATE	BOOK	PAGE	AREA	SOLD
7110114	Dale T. Kreke	36,390			7,506 AC.							
7110115	Sandschafer Electric, Inc.	17,150			4,972 AC.							
7110116	Charles A. and Dolores A. Kroeger et al	25,065		7,653	24,159							
7110126	Albert Kroeger	47,824			21,381 AC.							
7110127	Effingham Cemetery Corp.	13,333		2,321	12,745 AC.							
7110128	Lawrence L. and Patricia A. Willenborg	375			4,502 AC.							
7110129	Effingham Monument Company	1,500			18,499							
7110130	Mardell Goldstein	25,405			96,339 AC.							
7110240	Mel J. and Arthur C. Willenborg Tract 1 Tract 2	11,694 8,632 3,062			18,050 AC.							
7110242	IL. Central Railroad Company	12,933		12,933 PE								

NOTE: P.E. DENOTES PERMANENT EASEMENT NOTE: ALL AREAS ARE IN SQUARE FEET UNLESS OTHERWISE NOTED. NOTE: TEMPORARY EASEMENTS ARE NEEDED AS A WORK AREA

RIGHT OF WAY PLANS
 FAP ROUTE 95
 PROJECT SECTION (5,6,7) Y, RS-1
 STATION 181+00 TO STATION 210+00
 COUNTY EFFINGHAM
 SCALE 1"=100' SHEET 5 OF 27

JOB NO. R-97-010-01 CONTRACT NO 94356