

T 8 N R 6 E 3rd PM  
T 8 N R 7 E 3rd PM

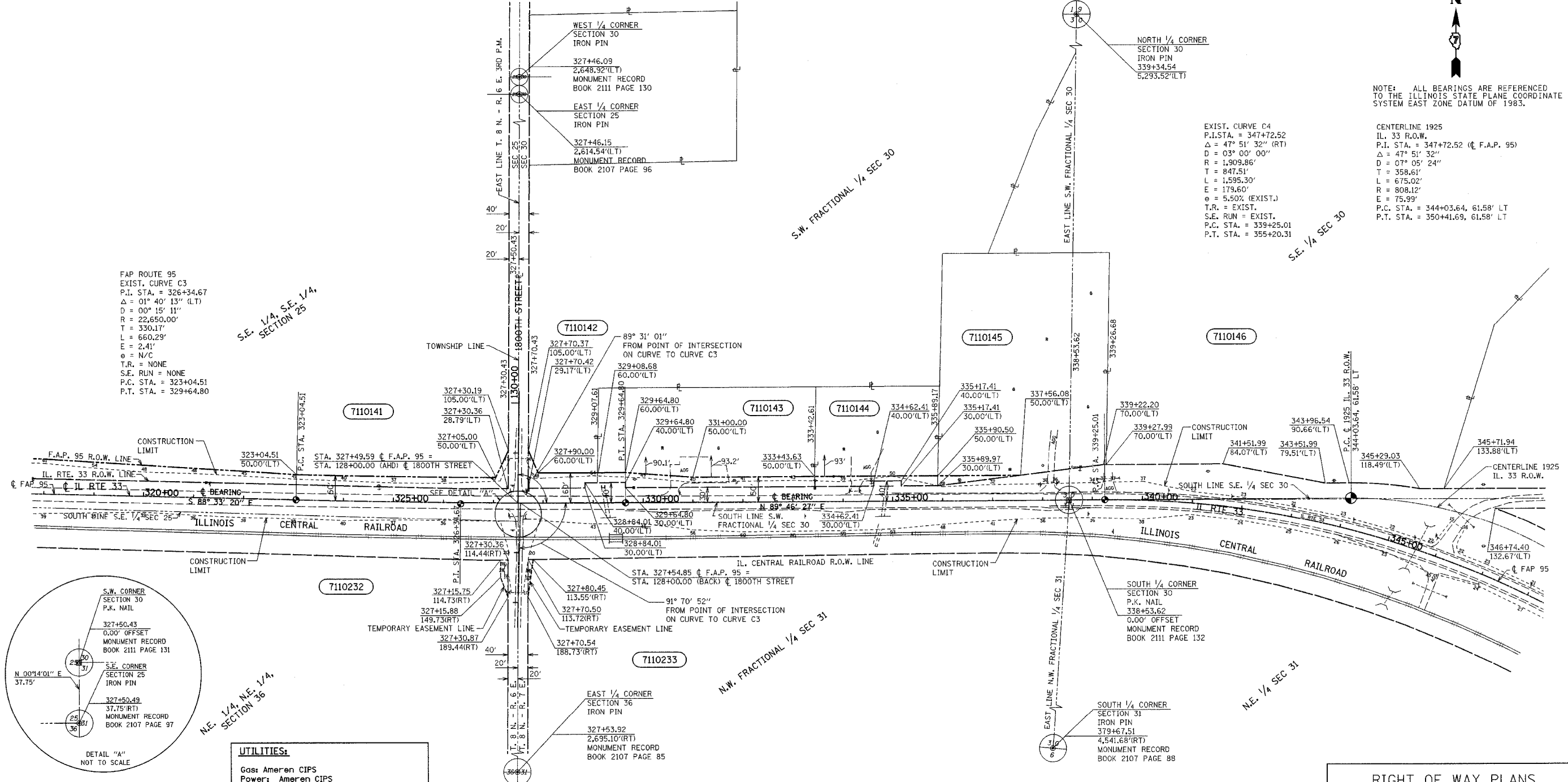
TEUTOPOLIS TWP  
ST. FRANCIS TWP

| F.A.P. RTE.                        | SECTION | COUNTY    | TOTAL SHEETS     | SHEET NO. |
|------------------------------------|---------|-----------|------------------|-----------|
| 95                                 |         | EFFINGHAM | 409              | 392       |
| FED. ROAD DIST. NO. 7              |         | ILLINOIS  | FED. AID PROJECT |           |
| * (6,7)Y, RS-1, 6B-1, 7B-1 & 7BR-2 |         |           |                  |           |
| CONTRACT NO. 94356                 |         |           |                  |           |

NOTE: ALL BEARINGS ARE REFERENCED TO THE ILLINOIS STATE PLANE COORDINATE SYSTEM EAST ZONE DATUM OF 1983.

CENTERLINE 1925  
IL. 33 R.O.W.  
P.I. STA. = 347+72.52 (C F.A.P. 95)  
Δ = 47° 51' 32"  
D = 03° 00' 00"  
R = 1,909.86'  
T = 847.51'  
L = 1,595.30'  
E = 179.60'  
θ = 5.50% (EXIST.)  
T.R. = EXIST.  
S.E. RUN = EXIST.  
P.C. STA. = 339+25.01  
P.T. STA. = 355+20.31

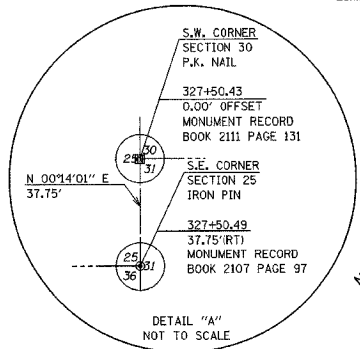
EXIST. CURVE C4  
P.I. STA. = 347+72.52  
Δ = 47° 51' 32" (RT)  
D = 03° 00' 00"  
R = 1,909.86'  
T = 847.51'  
L = 1,595.30'  
E = 179.60'  
θ = 5.50% (EXIST.)  
T.R. = EXIST.  
S.E. RUN = EXIST.  
P.C. STA. = 339+25.01  
P.T. STA. = 355+20.31



FAP ROUTE 95  
EXIST. CURVE C3  
P.I. STA. = 326+34.67  
Δ = 01° 40' 13" (LT)  
D = 00° 15' 11"  
R = 22,650.00'  
T = 330.17'  
L = 660.29'  
E = 2.41'  
θ = N/C  
T.R. = NONE  
S.E. RUN = NONE  
P.C. STA. = 323+04.51  
P.T. STA. = 329+64.80

S.E. 1/4, S.E. 1/4,  
SECTION 25

N.E. 1/4, N.E. 1/4,  
SECTION 36



**UTILITIES:**

Gas: Ameren CIPS  
Power: Ameren CIPS  
Norris Electric  
Water: City of Effingham  
EJ Water Corporation  
Village of Dieterloh  
San. Sewer: Village of Dieterloh  
Telephone: Consolidated Communications  
Frontier Communications  
Montrose Mutual  
CATV: Clear Vision Systems Inc.  
Pipeline: Trunkline Gas  
Marathon Pipeline

| PARCEL  | OWNER                               | ADD    | EXIST | EASEMENT | REM        | INST | MICROFLM | DATE | BOOK | PAGE | AREA | SOLD |
|---------|-------------------------------------|--------|-------|----------|------------|------|----------|------|------|------|------|------|
| 7110141 | Leroy Clemens Wernsing              | 39,128 |       |          | 75,195 AC. |      |          |      |      |      |      |      |
| 7110142 | Helen Wernsing et al                | 4,380  |       |          | 55,182 AC. |      |          |      |      |      |      |      |
| 7110143 | Raymond and Karen Drees             | 9,371  |       |          | 1,769 AC.  |      |          |      |      |      |      |      |
| 7110144 | John B. and Charlene C. Westendorf  | 4,386  |       |          | 1,022 AC.  |      |          |      |      |      |      |      |
| 7110145 | Joseph E. and Kristina Holman et al | 1,656  |       |          | 4,221 AC.  |      |          |      |      |      |      |      |
| 7110146 | John E. and Mary Ellen Kramer       |        |       |          |            |      |          |      |      |      |      |      |
| 7110232 | Michael G. Pais Trustee             |        |       | 825      |            |      |          |      |      |      |      |      |
| 7110233 | Richard and Lois Kreke Trustees     |        |       | 375      |            |      |          |      |      |      |      |      |

NOTE: ALL AREAS ARE IN SQUARE FEET UNLESS OTHERWISE NOTED. NOTE: TEMPORARY EASEMENTS ARE NEEDED AS A WORK AREA NOTE: \* OWNERS NAMES OBTAINED FROM COUNTY PLAT BOOKS

RIGHT OF WAY PLANS  
FAP ROUTE 95  
PROJECT SECTION (5,6,7) Y, RS-1  
STATION 319+00 TO  
STATION 347+00  
COUNTY EFFINGHAM  
SCALE 1"=100' SHEET 10 OF 27

•DGN-SPEC•  
•DATE•

K.M.S.  
DRAWN BY  
WRITTEN BY  
CHECKED BY  
INSPECTED BY

(R) RECORDED DISTANCE  
● - IRON PIN  
○ - IRON PIPE  
■ - NAIL

JOB NO. R-97-010-01 CONTRACT NO 94356

VASCONCELLES ENGINEERING CORPORATION (VEC\* 250-021) ENGINEERS - CONSULTANTS SPRINGFIELD, ILLINOIS