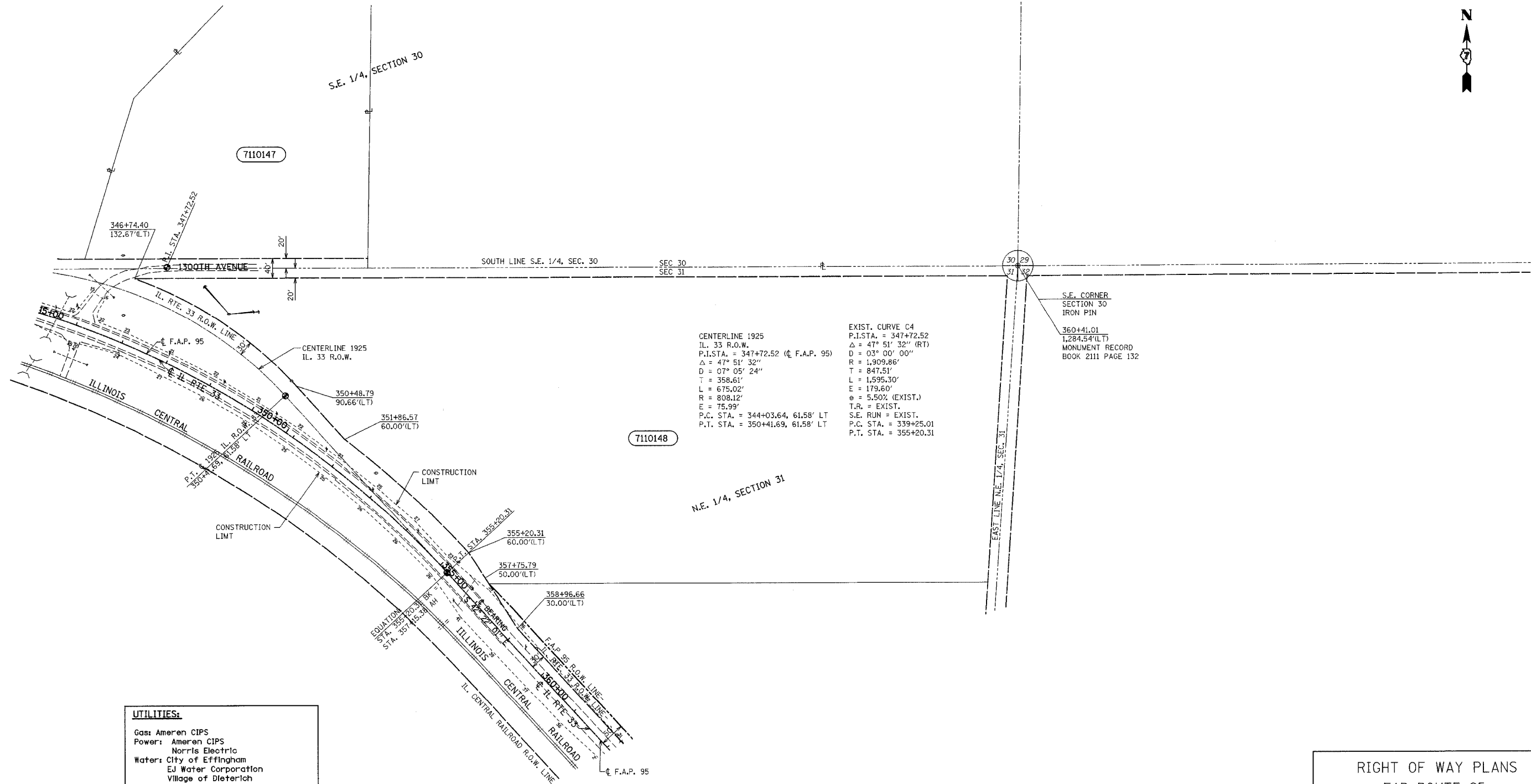


# T 8 N R 7 E 3rd PM ST. FRANCIS TWP

F.A.P. RTE.	SECTION	COUNTY	TOTAL SHEETS	SHEET NO.
95	*	EFFINGHAM	409	393
FED. ROAD DIST. NO. 7		ILLINOIS	FED. AID PROJECT	
* (6,7)Y, RS-1, 6B-1, 7B-1 & 7BR-2				
CONTRACT NO. 94356				



• DGN-SPEC •  
• DATE •



**CENTERLINE 1925**  
 IL. 33 R.O.W.  
 P.I. STA. = 347+72.52 (C F.A.P. 95)  
 $\Delta = 47^\circ 51' 32''$   
 $D = 07^\circ 05' 24''$   
 $T = 358.61'$   
 $L = 675.02'$   
 $R = 808.12'$   
 $E = 75.99'$   
 P.C. STA. = 344+03.64, 61.58' LT  
 P.T. STA. = 350+41.69, 61.58' LT

**EXIST. CURVE C4**  
 P.I. STA. = 347+72.52  
 $\Delta = 47^\circ 51' 32''$  (RT)  
 $D = 03^\circ 00' 00''$   
 $R = 1,909.86'$   
 $T = 847.51'$   
 $L = 1,595.30'$   
 $E = 179.60'$   
 $e = 5.50\%$  (EXIST.)  
 T.R. = EXIST.  
 S.E. RUN = EXIST.  
 P.C. STA. = 339+25.01  
 P.T. STA. = 355+20.31

7110148

S.E. CORNER  
 SECTION 30  
 IRON PIN  
 360+41.01  
 1,284.54'(LT)  
 MONUMENT RECORD  
 BOOK 2111 PAGE 132

**UTILITIES:**

- Gas: Ameren CIPS
- Power: Ameren CIPS
- Norris Electric
- Water: City of Effingham
- EJ Water Corporation
- Village of Dieterich
- San. Sewer: Village of Dieterich
- Telephone: Consolidated Communications
- Frontier Communications
- Montrorse Mutual
- CATV: Clear Vision Systems Inc.
- Pipeline: Trunkline Gas
- Marathon Pipeline

(R) RECORDED DISTANCE  
 ○ - IRON PIN  
 ● - IRON PIPE  
 ■ - NAIL

PARCEL	OWNER	ADD	EXIST	EASEMENT	REM	INST	MICROFLM	DATE	BOOK	PAGE	AREA	SOLD
7110148	Gertrude C. Kreke Trust et al	29,209			31,580 AC							

NOTE: ALL AREAS ARE IN SQUARE FEET  
 UNLESS OTHERWISE NOTED.

NOTE: TEMPORARY EASEMENTS ARE NEEDED AS A WORK AREA

NOTE: ALL BEARINGS ARE REFERENCED TO THE ILLINOIS  
 STATE PLANE COORDINATE SYSTEM EAST ZONE  
 DATUM OF 1903.

RIGHT OF WAY PLANS  
 FAP ROUTE 95  
 PROJECT SECTION (5,6,7) Y, RS-1  
 STATION 347+00 TO  
 STATION 361+00  
 COUNTY EFFINGHAM  
 SCALE 1"=100' SHEET 11 OF 27

JOB NO. R-97-010-01 CONTRACT NO 94356