

T 7 N R 7 E 3rd PM

BISHOP TWP

F.A.P. RTE.	SECTION	COUNTY	TOTAL SHEETS	SHEET NO.
95	*	EFFINGHAM	409	400
FED. ROAD DIST. NO. 7	ILLINOIS			
• (6.7Y, RS-1, 6B-1, 7B-1 & 7BR-2)				
CONTRACT NO. 94356				

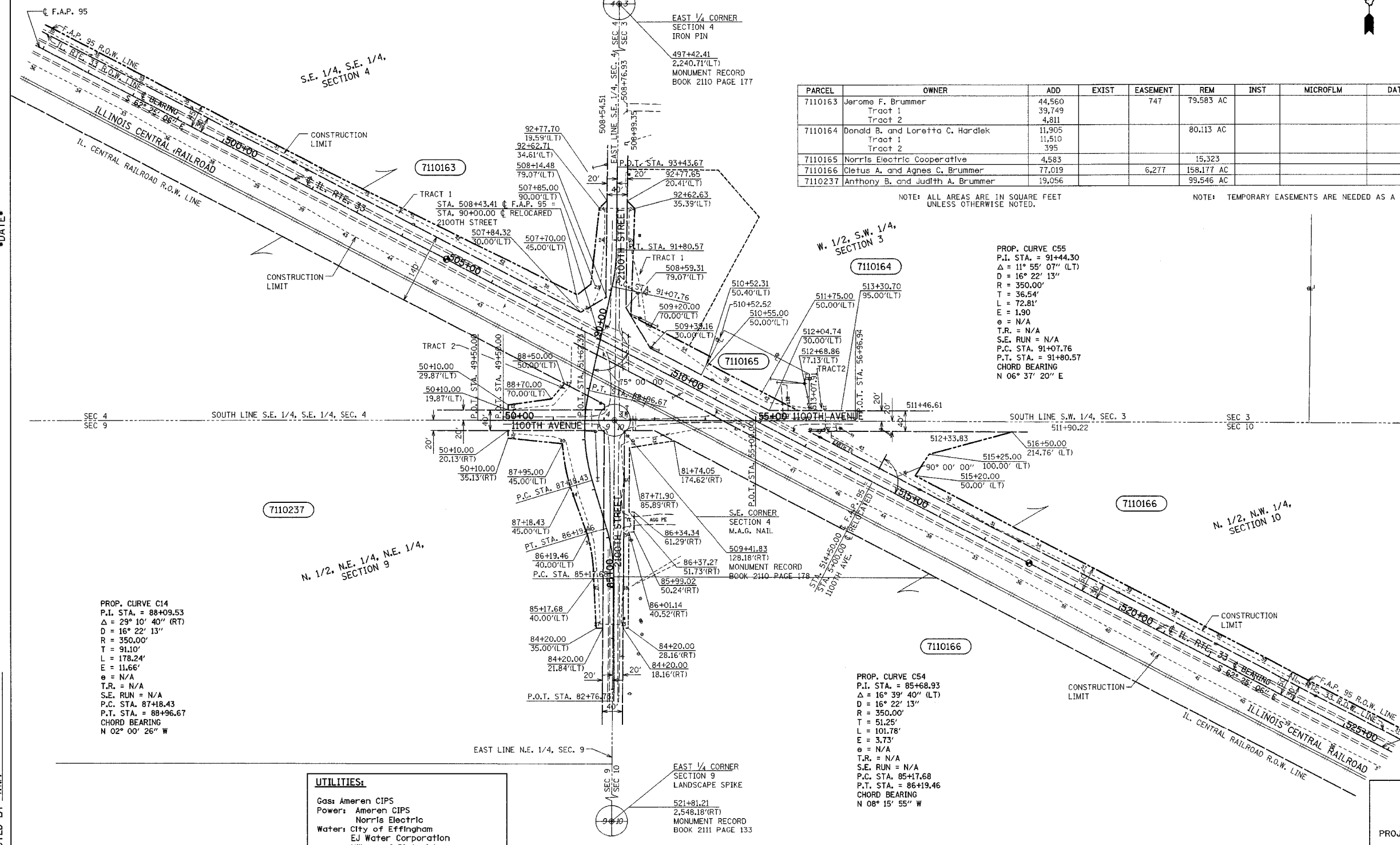


NOTE: ALL BEARINGS ARE REFERENCED TO THE ILLINOIS STATE PLANE COORDINATE SYSTEM EAST ZONE DATUM OF 1983.

PARCEL	OWNER	ADD	EXIST	EASEMENT	REM	INST	MICROFLM	DATE	BOOK	PAGE	AREA	SOLD
7110163	Jerome F. Brummer Tract 1	44,560		747	79,583 AC							
	Tract 2	39,749										
7110164	Donald B. and Loretta C. Hardlek Tract 1	11,905			80,113 AC							
	Tract 2	11,510										
7110165	Norris Electric Cooperative	4,583			15,323							
7110166	Cletus A. and Agnes C. Brummer	77,019		6,277	158,177 AC							
7110237	Anthony B. and Judith A. Brummer	19,056			99,546 AC							

NOTE: ALL AREAS ARE IN SQUARE FEET UNLESS OTHERWISE NOTED.

NOTE: TEMPORARY EASEMENTS ARE NEEDED AS A WORK AREA



PROP. CURVE C55
P.I. STA. = 91+44.30
 Δ = 11° 55' 07" (LT)
D = 16° 22' 13"
R = 350.00'
T = 36.54'
L = 72.81'
E = 1.90'
 ϕ = N/A
T.R. = N/A
S.E. RUN = N/A
P.C. STA. = 91+07.76
P.T. STA. = 91+80.57
CHORD BEARING
N 06° 37' 20" E

PROP. CURVE C14
P.I. STA. = 88+09.53
 Δ = 29° 10' 40" (RT)
D = 16° 22' 13"
R = 350.00'
T = 91.10'
L = 178.24'
E = 11.66'
 ϕ = N/A
T.R. = N/A
S.E. RUN = N/A
P.C. STA. = 87+18.43
P.T. STA. = 88+96.67
CHORD BEARING
N 02° 00' 26" W

PROP. CURVE C54
P.I. STA. = 85+68.93
 Δ = 16° 39' 40" (LT)
D = 16° 22' 13"
R = 350.00'
T = 51.25'
L = 101.78'
E = 3.73'
 ϕ = N/A
T.R. = N/A
S.E. RUN = N/A
P.C. STA. = 85+17.68
P.T. STA. = 86+19.46
CHORD BEARING
N 08° 15' 55" W

UTILITIES:

- Gas: Ameren CIPS
- Power: Ameren CIPS
Norris Electric
- Water: City of Effingham
EJ Water Corporation
Village of Dieterich
- San. Sewer: Village of Dieterich
- Telephone: Consolidated Communications
Frontier Communications
Montrose Mutual
- CATV: Clear Vision Systems Inc.
- Pipeline: Trunkline Gas
Marathon Pipeline

- (R) RECORDED DISTANCE
- - IRON PIN
- - IRON PIPE
- - NAIL

DRAWN BY _____
WRITTEN BY _____
CHECKED BY _____
INSPECTED BY _____

JOB NO. R-97-010-01 CONTRACT NO 94356

RIGHT OF WAY PLANS
FAP ROUTE 95
PROJECT SECTION (5,6,7) Y RS-1
STATION 497+00 TO 525+00
COUNTY EFFINGHAM
SCALE 1"=100' SHEET 18 OF 27