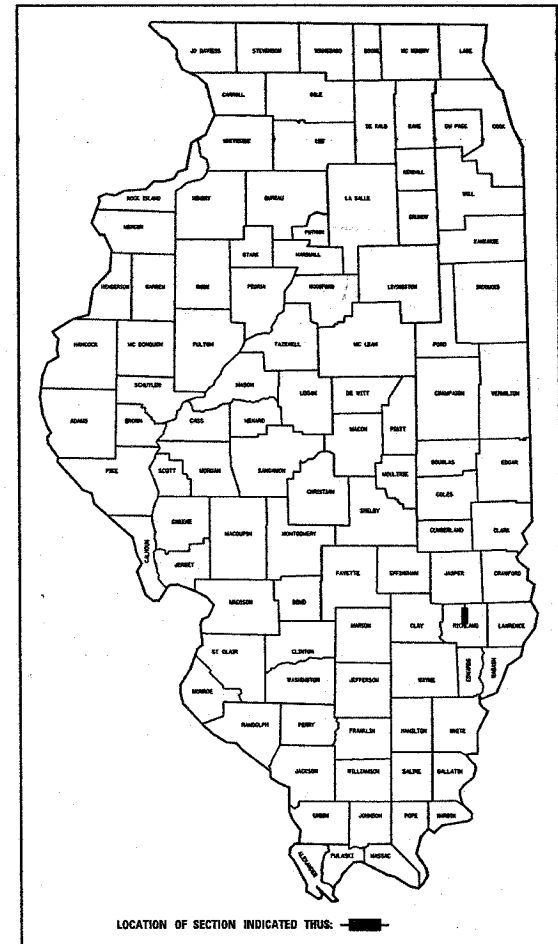


94911

FAP NO.	SECTION	COUNTY	TOTAL SHEETS	SHEET NO.
116	123RS-3 122RS-4	RICHLAND	27	1
FED. ROAD DIST. NO. 7		ILLINOIS	FED. AID PROJECT NO.	

D-97-054-03



LOCATION OF SECTION INDICATED THUS: [Symbol]

STATE OF ILLINOIS
DEPARTMENT OF TRANSPORTATION
DIVISION OF HIGHWAYS

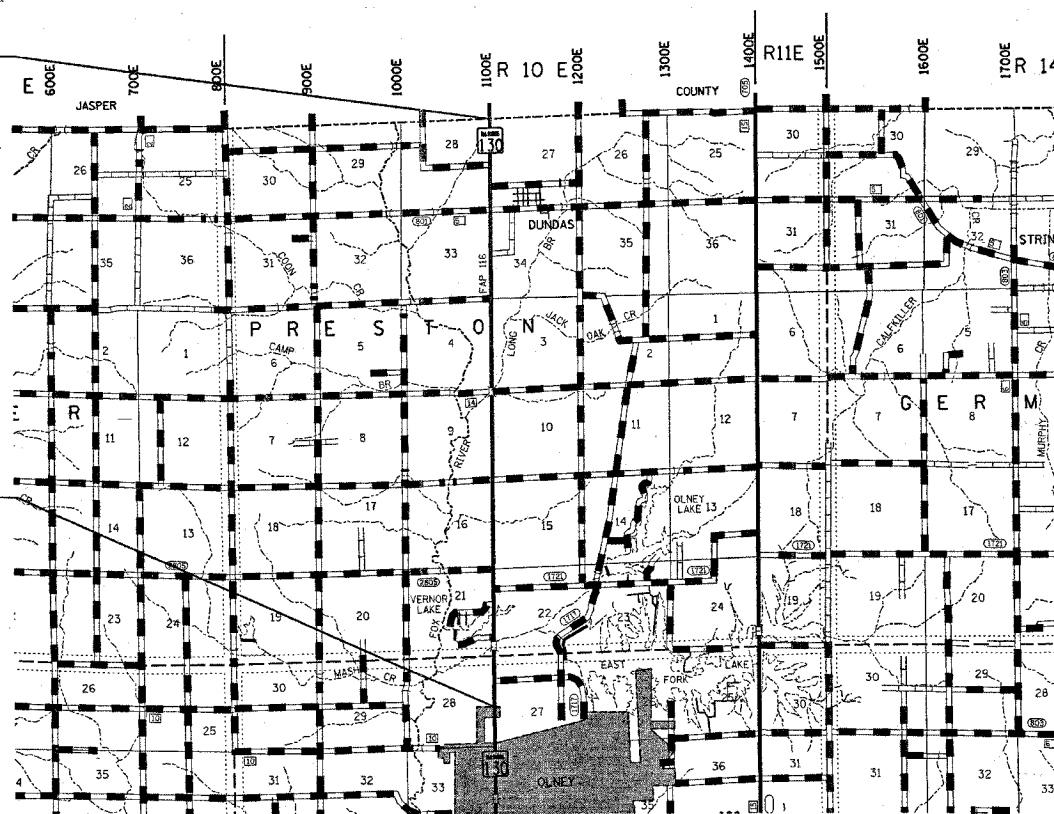
**PROPOSED
HIGHWAY PLANS**
FAP ROUTE 116 (ILL. 130)
SECTION 122RS-4, 123RS-3
~~PROJECT NO.~~
RICHLAND COUNTY

C-97-051-04

SEE SHEET 2 FOR INDEX OF SHEETS

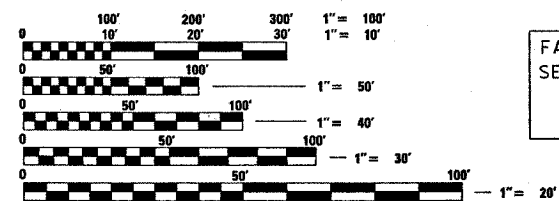
PAVING OMISSIONS
STA. 744+98 TO STA. 746+53
STA. 896+15 TO STA. 898+18

FAP ROUTE 116 (ILL. 130)
SECTION 122RS-4, 123RS-3
RICHLAND COUNTY
BEGINS STA. 582+71



FAP ROUTE 116 (ILL. 130)
SECTION 122RS-4, 123RS-3
RICHLAND COUNTY
ENDS STA. 946+80

ADT = 5100 (2005)



FULL SIZE PLANS HAVE BEEN PREPARED USING STANDARD ENGINEERING SCALES, REDUCED SIZED PLANS WILL NOT CONFORM TO STANDARD SCALES, IN MAKING MEASUREMENTS ON REDUCED PLANS, THE ABOVE SCALES MAY BE USED.

J.U.L.I.E.
JOINT UTILITY LOCATION INFORMATION FOR EXCAVATION
1-800-892-0123

CONTRACT NO. 94911

TOWNSHIP : PRESTON, OLNEY

GROSS LENGTH = 36,409.0 FEET = 6.90 MILES
NET LENGTH = 36,051.0 FEET = 6.80 MILES

SEAL

STATE OF ILLINOIS
DEPARTMENT OF TRANSPORTATION
DIVISION OF HIGHWAYS

SUBMITTED March 15, 2007
Christ H. Reed
DISTRICT ENGINEER

20

ENGINEER OF PROJECT DEVELOPMENT AND IMPLEMENTATION
May 11, 2007
Eric E. [Signature]
ENGINEER OF DESIGN AND ENVIRONMENT

May 11, 2007
William R. [Signature]
DIRECTOR, DIVISION OF HIGHWAYS

PRINTED BY THE AUTHORITY OF
THE STATE OF ILLINOIS

steffermk
3/12/2007
c:\projects\94911\d05403pa.dgn

PROJECT ENGINEER : MARK DAUGHERTY
SQUAD LEADER : JOYCE HEMMEN
DESIGNER : BRENT BIERMAN
TELEPHONE : 217/342-3951 EX 313