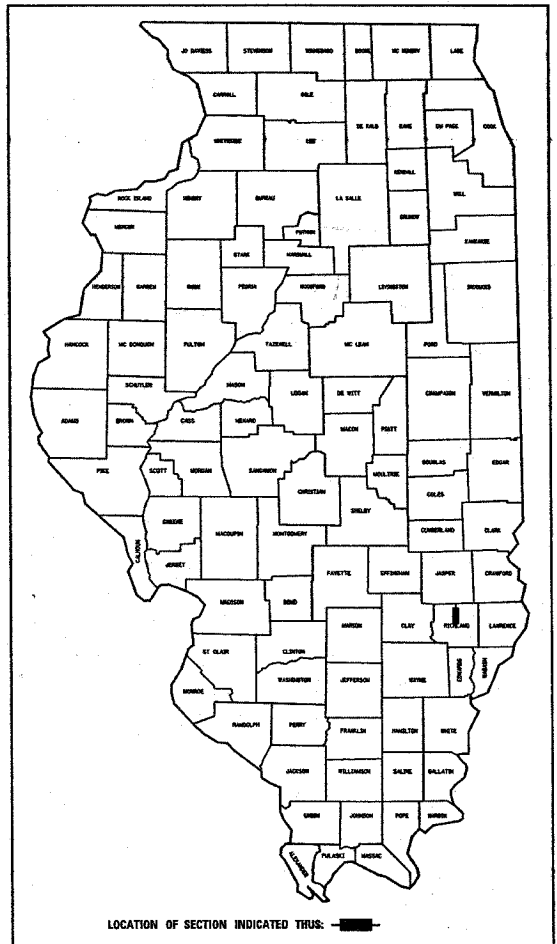


94911

FAP NO.	SECTION	COUNTY	TOTAL SHEETS	SHEET NO.
116	123RS-3 122RS-4	RICHLAND	27	1
FED. ROAD DIST. NO. 7		ILLINOIS	FED. AID PROJECT NO.	

D-97-054-03



LOCATION OF SECTION INDICATED THUS: [Symbol]

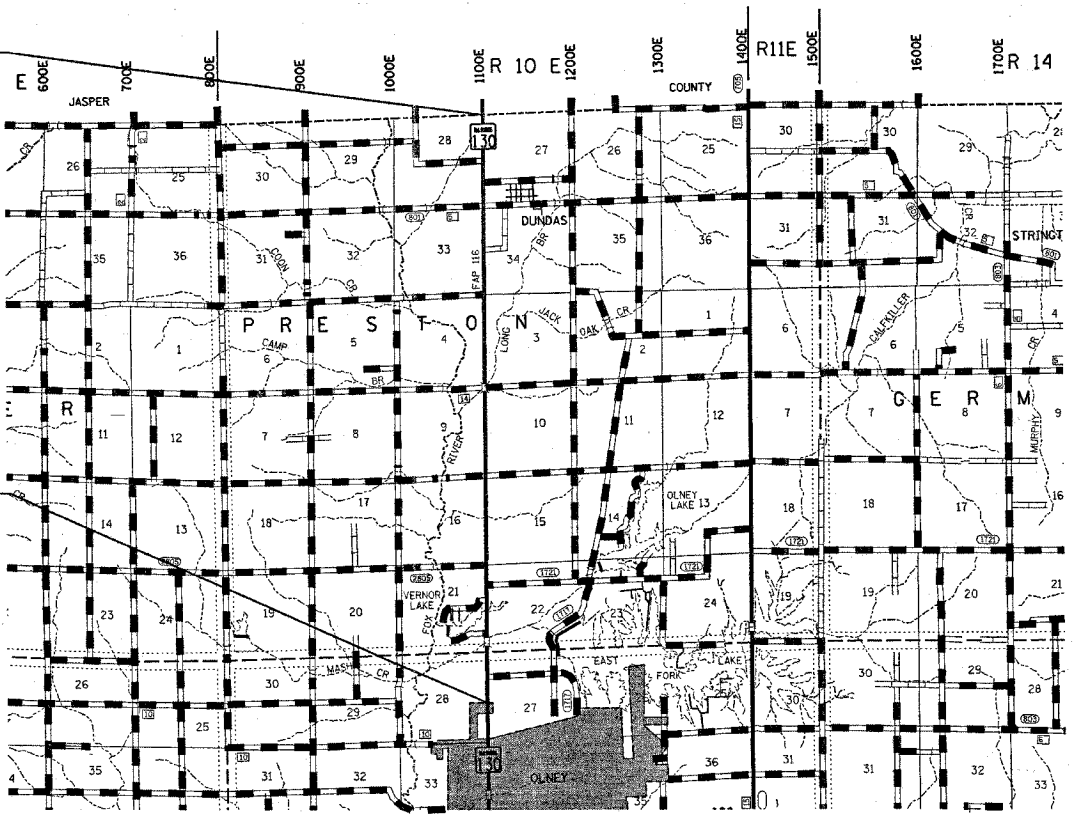
STATE OF ILLINOIS
 DEPARTMENT OF TRANSPORTATION
 DIVISION OF HIGHWAYS
**PROPOSED
 HIGHWAY PLANS**
 FAP ROUTE 116 (ILL. 130)
 SECTION 122RS-4, 123RS-3
~~PROJECT NO.~~
 RICHLAND COUNTY

C-97-051-04

SEE SHEET 2 FOR INDEX OF SHEETS

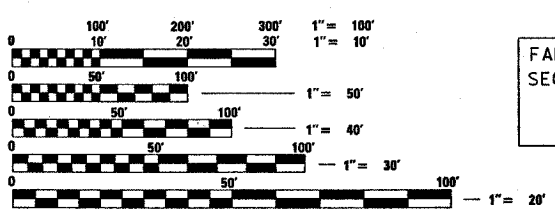
PAVING OMISSIONS
 STA. 744+98 TO STA. 746+53
 STA. 896+15 TO STA. 898+18

FAP ROUTE 116 (ILL. 130)
 SECTION 122RS-4, 123RS-3
 RICHLAND COUNTY
 BEGINS STA. 582+71



FAP ROUTE 116 (ILL. 130)
 SECTION 122RS-4, 123RS-3
 RICHLAND COUNTY
 ENDS STA. 946+80

ADT = 5100 (2005)



FULL SIZE PLANS HAVE BEEN PREPARED USING STANDARD ENGINEERING SCALES, REDUCED SIZED PLANS WILL NOT CONFORM TO STANDARD SCALES, IN MAKING MEASUREMENTS ON REDUCED PLANS, THE ABOVE SCALES MAY BE USED.

J.U.L.I.E.
 JOINT UTILITY LOCATION INFORMATION FOR EXCAVATION
 1-800-892-0123

CONTRACT NO. 94911

TOWNSHIP : PRESTON, OLNEY

GROSS LENGTH = 36,409.0 FEET = 6.90 MILES
 NET LENGTH = 36,051.0 FEET = 6.80 MILES

SEAL

PRINTED BY THE AUTHORITY OF
 THE STATE OF ILLINOIS

STATE OF ILLINOIS
 DEPARTMENT OF TRANSPORTATION
 DIVISION OF HIGHWAYS

SUBMITTED March 15, 2007
Christ H. Reed
 DISTRICT ENGINEER

20

ENGINEER OF PROJECT DEVELOPMENT AND IMPLEMENTATION
May 11, 2007
Eric E. [Signature]
 ENGINEER OF DESIGN AND ENVIRONMENT

May 11, 2007
William R. [Signature]
 DIRECTOR, DIVISION OF HIGHWAYS

steffermk
 3/12/2007
 c:\projects\94911\d05403pa.dgn

PROJECT ENGINEER : MARK DAUGHERTY
 SQUAD LEADER : JOYCE HEMMEN
 DESIGNER : BRENT BIERMAN
 TELEPHONE : 217/342-3951 EX 313

steffennk
 3/12/2007
 c:\projects\94911\d05403po.dgn
GEN

FAP NO.	SECTION	COUNTY	TOTAL SHEETS	SHEET NO.
116	123RS-3 122RS-4	RICHLAND	27	2
FED. ROAD DIST. NO. 7		ALJMSR	FED. AID PROJECT NO.	

CONTRACT NO. 94911

GENERAL NOTES

THIS PROJECT IS LOCATED ON ILLINOIS ROUTE 130 IN RICHLAND COUNTY, FROM THE JASPER/RICHLAND COUNTY LINE TO JUST NORTH OF MACK AVENUE IN OLNEY. THE WORK INCLUDED IN SECTION 122RS-4 AND 123RS-3 CONSISTS OF PAVEMENT PATCHING, MILLING, BITUMINOUS RESURFACING, AGGREGATE SHOULDERS, PAVEMENT MARKING, AND OTHER WORK NECESSARY TO COMPLETE THE SECTION.

PAVEMENT MARKING SHALL BE APPLIED IN ACCORDANCE WITH SECTION 780 OF THE STANDARD SPECIFICATIONS. SHORT TERM PAVEMENT MARKING SHALL BE APPLIED TO THE MILLED SURFACE, BITUMINOUS MATERIALS (PRIME COAT), LEVEL BINDER, AND BITUMINOUS SURFACE COURSE AS SPECIFIED IN SECTION 703 OF THE STANDARD SPECIFICATIONS. TEMPORARY TAPE SHALL BE USED ON THE SURFACE COURSE AND PAINT SHALL BE USED ON MILLED SURFACES.

THE TOTAL QUANTITY OF PAINT PAVEMENT MARKING-LINE 4 INCH CONSISTS OF 16,217 FEET OF YELLOW AND 69,848 FEET OF WHITE.

THE TOTAL QUANTITY OF THERMOPLASTIC PAVEMENT MARKING-LINE 4 INCH CONSISTS OF 3202 FEET OF YELLOW.

THE TOTAL QUANTITY OF RAISED REFLECTIVE PAVEMENT MARKERS IS 454 TWO-WAY AMBER, 27 ONE-WAY AMBER, AND 10 ONE-WAY CRYSTAL.

THE MATERIAL USED FOR AGGREGATE SHOULDERS, TYPE B SHALL BE CRUSHED STONE, CRUSHED CONCRETE OR RAP.

THE MATERIAL USED FOR AGGREGATE SURFACE COURSE, TYPE B SHALL BE CRUSHED STONE OR CRUSHED CONCRETE.

THE DETECTOR LOOP, TYPE 1 PAY ITEM IS INCLUDED FOR REPLACEMENT OF LOOPS EXPECTED TO BE DESTROYED BY MILLING. THE REPLACEMENT LOOPS SHALL BE INSTALLED PRIOR TO CONSTRUCTION OF THE SURFACE COURSE IN THE AREAS AFFECTED.

THE EXISTING PAVEMENT SHALL BE PATCHED IN ACCORDANCE WITH SECTION 442 OF THE STANDARD SPECIFICATIONS AND THE SPECIAL PROVISIONS. THE QUANTITY OF PATCHING SHOWN ON THE PLANS IS AN ESTIMATE ONLY AND THE FINAL LOCATIONS AND QUANTITY SHALL BE DETERMINED BY THE ENGINEER IN THE FIELD.

BITUMINOUS MATERIALS (PRIME COAT) SHALL BE EITHER RC-70 OR AN EMULSIFIED POLYMER PRIME SS-1HP.

THE CONTRACTOR SHALL PROVIDE INTERNET ACCESS TO THE BITUMINOUS PLANT QUALITY CONTROL LAB SO THAT BITUMINOUS PLANT REPORTS CAN BE E-MAILED TO THE DISTRICT HEADQUARTERS. THIS WORK SHALL BE INCLUDED IN THE COST OF ALL BITUMINOUS ITEMS.

THE RESIDENT ENGINEER SHALL BE THE SOLE JUDGE CONCERNING THE CURING TIME FOR THE VARIOUS BITUMINOUS LIFTS.

THE FOLLOWING MIXTURE REQUIREMENTS ARE APPLICABLE FOR THIS PROJECT:

MIXTURE USE:	LEVEL BINDER	SURFACE COURSE
PG GRADE:	PG 64-22	PG 64-22
RAP%:	15% Max.	10% Max.
DESIGN AIR VOIDS:	4.0% @ NDESIGN = 70	4.0% @ NDESIGN = 70
MIXTURE COMPOSITION:	IL-9.5	IL-9.5
FRICTION AGGREGATE:	N/A	MIXTURE D
MIXTURE USE:	PAVEMENT PATCHING	INCIDENTAL HOT MIX ASPHALT SURFACING
PG GRADE:	PG 64-22	PG 64-22
RAP%:	15% Max.	15% Max.
DESIGN AIR VOIDS:	4.0% @ NDESIGN = 70	4.0% @ NDESIGN = 50
MIXTURE COMPOSITION:	IL-19.0	IL-9.5
FRICTION AGGREGATE:	N/A	MIXTURE C

THE FOLLOWING RATES OF APPLICATION HAVE BEEN USED IN CALCULATING PLAN QUANTITIES:

AGGREGATE SURFACE COURSE	2.05 TONS/CU YD
AGGREGATE SHOULDERS	3.24 TONS/CU YD
BITUMINOUS MATERIALS (PRIME COAT)	0.10 GAL/SQ YD
AGGREGATE (PRIME COAT)	4 LBS/SQ YD
HOT MIX ASPHALT	112 LBS/SQ YD/INCH

INDEX OF SHEETS

SHEET NO.	ITEM
1	COVER SHEET
2	INDEX OF SHEETS, LIST OF APPLICABLE HIGHWAY STANDARDS, GENERAL NOTES
3	SUMMARY OF QUANTITIES
4-6	TYPICAL SECTIONS
7-8	MILLING DETAILS
9	PAVING SCHEDULE AND PAVEMENT MARKING SCHEDULES
10	PERMANENT SURVEY MARKERS
11	ENTRANCE SCHEDULE AND MAILBOX TURNOUT DETAIL
12-24	PLAN SHEETS
25-26	PAVEMENT MARKING DETAILS & DETECTOR LOOPS
27	TYPICAL APPLICATION OF DETECTOR LOOPS

THE FOLLOWING STANDARDS ARE A PART OF THESE PLANS AND ARE INCLUDED AFTER SHEET NO. 27:

STD. NO.	DESCRIPTION
000001-04	STANDARD SYMBOLS, ABBREVIATIONS AND PATTERNS
406201	MAILBOX TURNOUT
442201-02	CLASS C AND D PATCHES
635006-02	REFLECTOR AND TERMINAL MARKER PLACEMENT
635011-01	REFLECTOR MARKER AND MOUNTING DETAILS
667101	PERMANENT SURVEY MARKERS
701001-01	OFF-RD OPERATION 2L, 2W, MORE THAN 15 FT. AWAY
701006-02	OFF-RD OPERATIONS, 2L, 2W, 15 FT. TO 24 IN. FROM PAVEMENT EDGE
701011-01	OFF-RD MOVING OPERATIONS, 2L, 2W, DAY ONLY
701301-02	LANE CLOSURE, 2L, 2W, SHORT TIME OPERATIONS
701306-01	LANE CLOSURE, 2L, 2W, SLOW MOVING OPERATIONS DAY ONLY, FOR SPEEDS >=45 MPH
701311-02	LANE CLOSURE, 2L, 2W, MOVING OPERATIONS - DAY ONLY
701336-04	LANE CLOSURE, 2L, 2W, WORK AREAS IN SERIES, FOR SPEEDS >=45 MPH
702001-06	TRAFFIC CONTROL DEVICES
780001-01	TYPICAL PAVEMENT MARKINGS
781001-02	TYPICAL APPLICATIONS RAISED REFLECTIVE PAVEMENT MARKERS
886001	DETECTOR LOOP INSTALLATIONS
886006	TYPICAL LAYOUT FOR DETECTOR LOOPS

REVISIONS	
NAME	DATE

ILLINOIS DEPARTMENT OF TRANSPORTATION

**GENERAL NOTES
&
INDEX OF SHEETS**

SCALE: VERT.
HORIZ.
DATE

DRAWN BY
CHECKED BY

SUMMARY OF QUANTITIES

CONTRACT NO. 94911

SUMMARY OF QUANTITIES			TOTAL QUANTITIES	CONSTRUCTION TYPE CODE	
CODE NO	ITEM	UNIT		100% STATE 1000	
				RURAL	URBAN
40200800	AGGREGATE SURFACE COURSE, TYPE B	TON	368	311	57
40600100	BITUMINOUS MATERIALS (PRIME COAT)	GALLON	12071	11078	993
40600300	AGGREGATE (PRIME COAT)	TON	242	222	20
40600635	LEVELING BINDER (MACHINE METHOD), N70	TON	5064	4646	418
40600895	CONSTRUCTING TEST STRIP	EACH	1	1	
40600982	HOT-MIX ASPHALT SURFACE REMOVAL - BUTT JOINT	SQ YD	750	600	150
40600990	TEMPORARY RAMP	SQ YD	209	167	42
40600995	TEMPORARY RAMP, SPECIAL	SQ YD	132	132	
40603340	HOT-MIX ASPHALT SURFACE COURSE, MIX "D", N70	TON	10134	9299	835
40800050	INCIDENTAL HOT-MIX ASPHALT SURFACING	TON	86	76	10
44000158	HOT-MIX ASPHALT SURFACE REMOVAL, 2 1/4"	SQ YD	4331		4331
44000198	HOT-MIX ASPHALT SURFACE REMOVAL, VARIABLE DEPTH	SQ YD	115577	110177	5400
44200168	PAVEMENT PATCHING, TYPE II, 14 INCH	SQ YD	2206	2078	128
44200172	PAVEMENT PATCHING, TYPE III, 14 INCH	SQ YD	160	160	
44200174	PAVEMENT PATCHING, TYPE IV, 14 INCH	SQ YD	333	333	
48101200	AGGREGATE SHOULDERS, TYPE B	TON	2466	2391	75
66700095	PERMANENT SURVEY MARKERS	EACH	3	3	
67000500	ENGINEER'S FIELD OFFICE, TYPE B	CAL MO	5	5	
67100100	MOBILIZATION	L SUM	1	1	
70100460	TRAFFIC CONTROL AND PROTECTION, STANDARD 701306	L SUM	1	1	
70100600	TRAFFIC CONTROL AND PROTECTION, STANDARD 701336	L SUM	1	1	
70300100	SHORT-TERM PAVEMENT MARKING	FOOT	14747	13293	1454
70300210	TEMPORARY PAVEMENT MARKING - LETTERS AND SYMBOLS	SQ FT	141		141
70300220	TEMPORARY PAVEMENT MARKING - LINE 4"	FOOT	88687	80551	8136
70300240	TEMPORARY PAVEMENT MARKING - LINE 6"	FOOT	419		419
70300260	TEMPORARY PAVEMENT MARKING - LINE 12"	FOOT	189		189
70300280	TEMPORARY PAVEMENT MARKING - LINE 24"	FOOT	77		77
70301000	WORK ZONE PAVEMENT MARKING REMOVAL	SQ FT	1228	1107	121
* 78000100	THERMOPLASTIC PAVEMENT MARKING - LETTERS AND SYMBOLS	SQ FT	141		141
* 78000200	THERMOPLASTIC PAVEMENT MARKING - LINE 4"	FOOT	2622		2622

SUMMARY OF QUANTITIES			TOTAL QUANTITIES	CONSTRUCTION TYPE CODE	
CODE NO	ITEM	UNIT		100% STATE 1000	
				RURAL	URBAN
78000400	THERMOPLASTIC PAVEMENT MARKING - LINE 6"	FOOT	419		419
78000600	THERMOPLASTIC PAVEMENT MARKING - LINE 12"	FOOT	189		189
* 78000650	THERMOPLASTIC PAVEMENT MARKING - LINE 24"	FOOT	77		77
78001110	PAINT PAVEMENT MARKING - LINE 4"	FOOT	86065	80551	5514
78100100	RAISED REFLECTIVE PAVEMENT MARKER	EACH	491	416	75
78300100	PAVEMENT MARKING REMOVAL	SQ FT	73		73
81012200	CONDUIT IN TRENCH, 3/4" DIA., PVC	FOOT	244		244
81012400	CONDUIT IN TRENCH, 1 1/4" DIA., PVC	FOOT	128		128
81500100	GULFBOX JUNCTION	EACH	1		1
* 81900200	TRENCH AND BACKFILL FOR ELECTRICAL WORK	FOOT	372		372
87301305	ELECTRIC CABLE IN CONDUIT, LEAD-IN, NO. 14 1 PAIR	FOOT	480		480
87900200	DRILL EXISTING HANDHOLE	EACH	13		13
88500100	INDUCTIVE LOOP DETECTOR	EACH	1		1
88600100	DETECTOR LOOP, TYPE I	FOOT	760		760

* SPECIALTY ITEMS

REVISIONS	
NAME	DATE

ILLINOIS DEPARTMENT OF TRANSPORTATION

SUMMARY OF QUANTITIES

SCALE: VERT. HORIZ. DATE

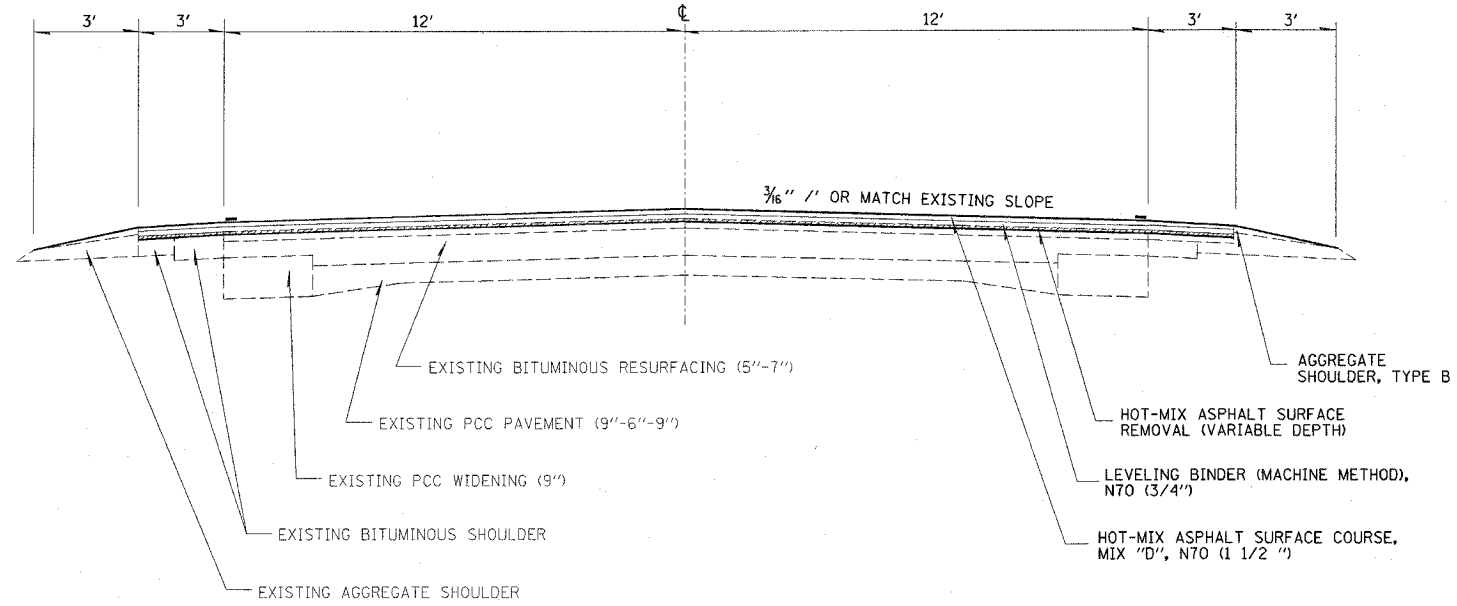
DRAWN BY CHECKED BY

bradyke
3/29/2007
c:\projects\94911d\05403pa.dgn

TYP

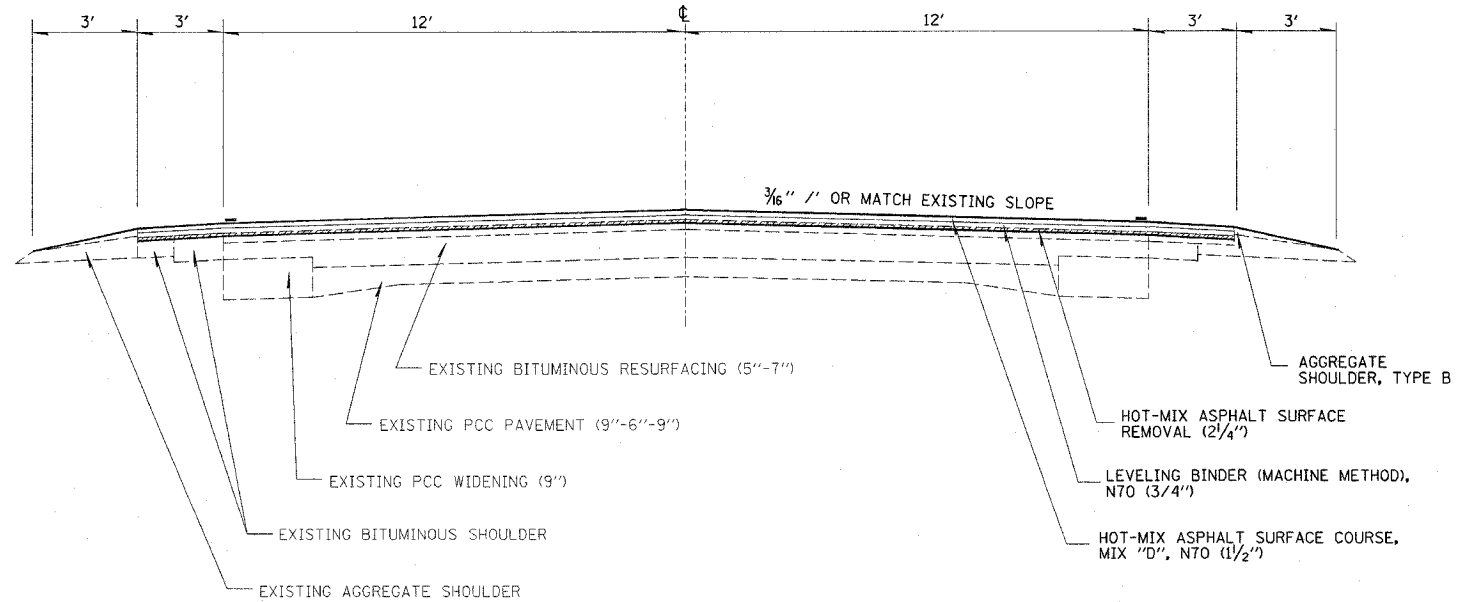
FAP REF.	SECTION	COUNTY	TOTAL SHEETS	SHEET NO.
116	123RS-3 122RS-4	RICHLAND	27	4
FED. ROAD DIST. NO. 7	ILLINOIS	FED. AID PROJECT NO.		

CONTRACT NO. 94911



EXISTING TYPICAL SECTION

STA 582+71 TO STA 744+98
STA 746+53 TO STA 896+15
STA 898+18 TO STA 935+27



TYPICAL SECTION

STA 935+27 TO STA. 937+05

REVISIONS	
NAME	DATE

ILLINOIS DEPARTMENT OF TRANSPORTATION

TYPICAL SECTIONS

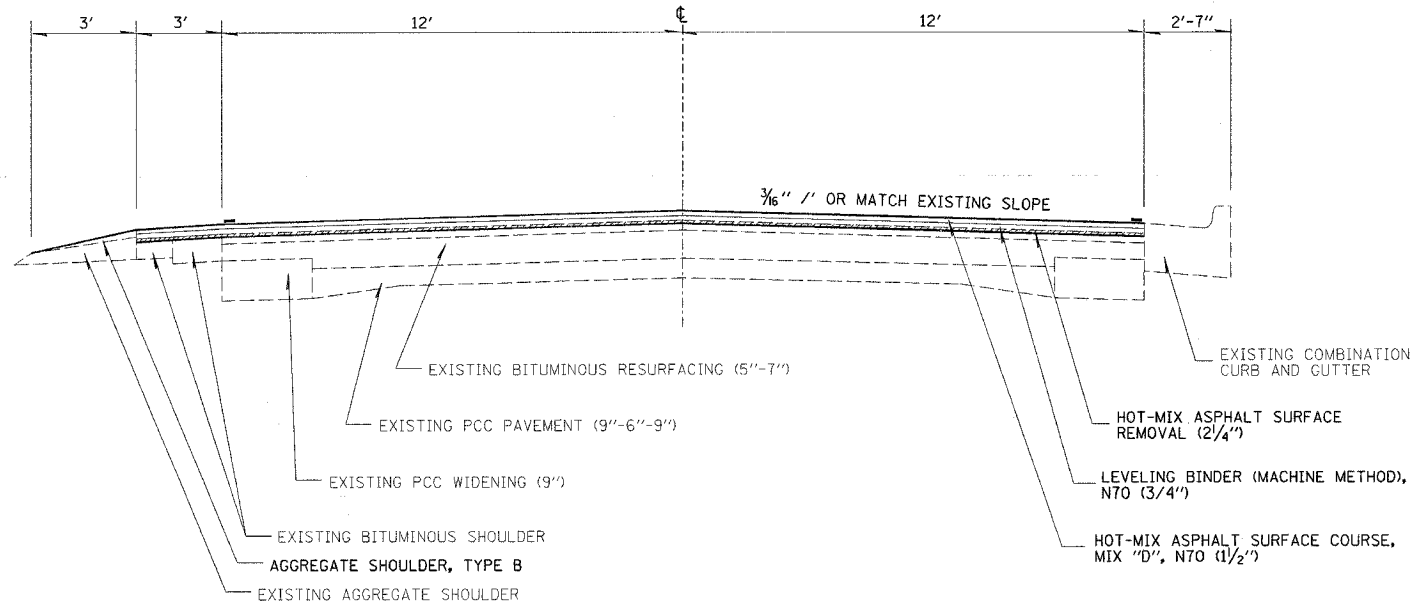
SCALE: VERT. DRAWN BY
 HORIZ. CHECKED BY
DATE

steffenmk
3/12/2007
c:\projects\94911d\05403pa.dgn

TYP 2

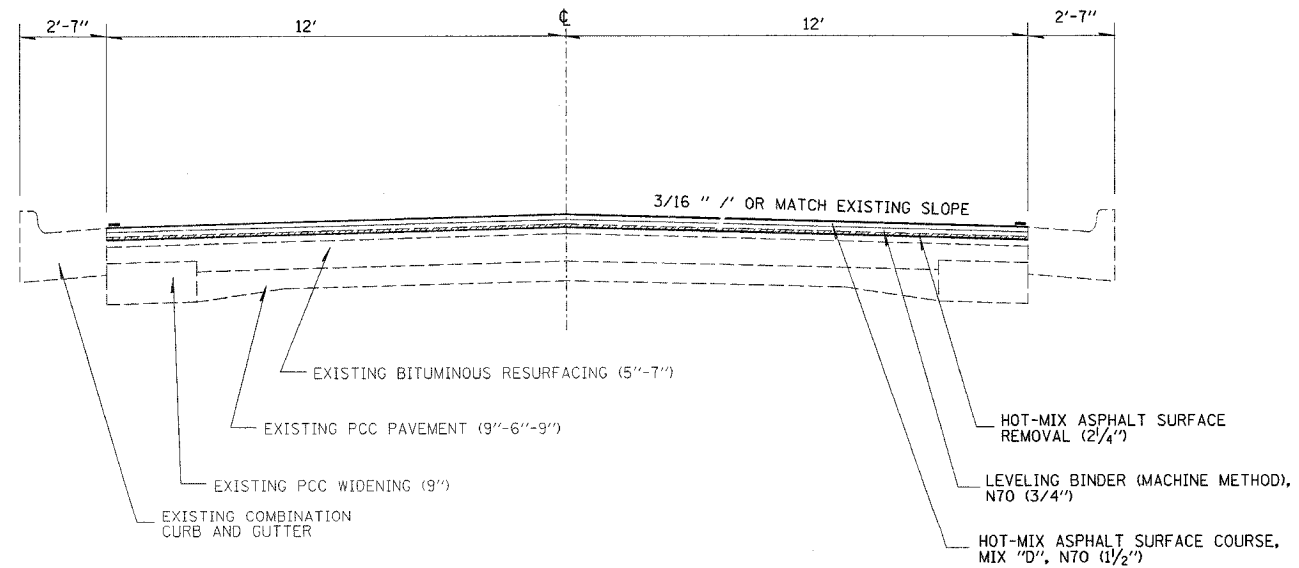
FAP FILE	SECTION	COUNTY	TOTAL SHEETS	SHEET NO.
116	123RS-3 122RS-4	RICHLAND	17	5
FED. ROAD DIST. NO. 1		ILLINOIS	FED. AID PROJECT NO.	

CONTRACT NO. 94911



TYPICAL SECTION

STA. 937+05 TO STA. 937+66



TYPICAL SECTION

STA. 937+66 TO STA. 938+38

REVISIONS	
NAME	DATE

ILLINOIS DEPARTMENT OF TRANSPORTATION

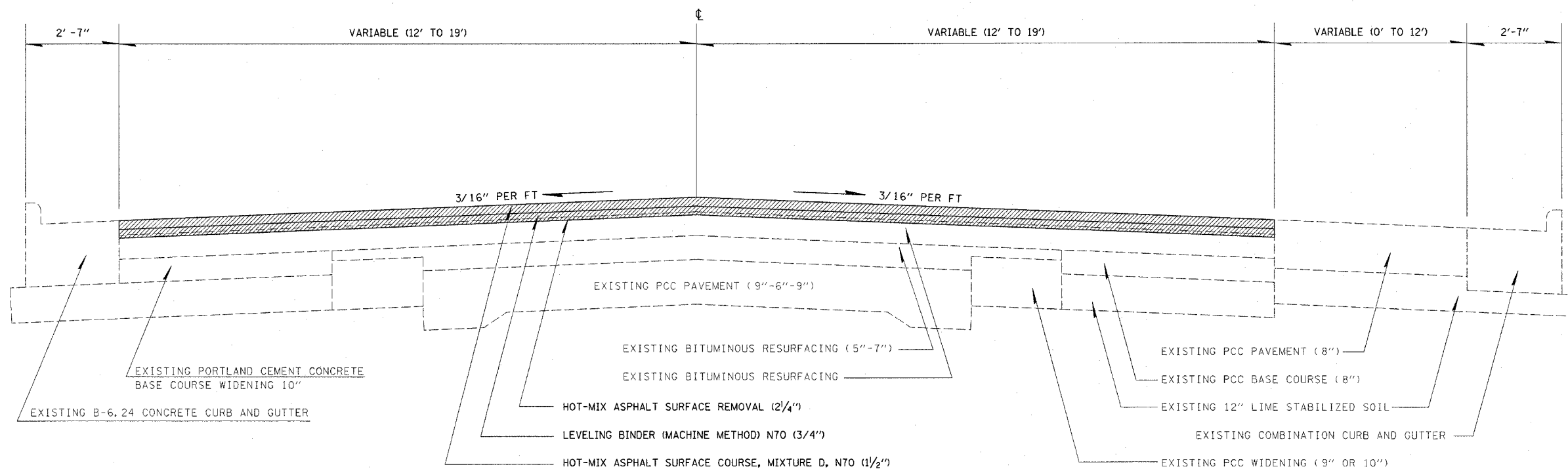
TYPICAL SECTIONS

SCALE: VERT. _____
HORIZ. _____
DATE _____ DRAWN BY _____
CHECKED BY _____

stef fenmk
 3/12/2007
 c:\projects\94911d\05403pa.dgn
 TYP 3

FAP NO.	SECTION	COUNTY	TOTAL SHEETS	SHEET NO.
116	123RS-3 122RS-4	RICHLAND	27	6
FED. ROAD DIST. NO. 7	ILLINOIS	FED. AID PROJECT NO.		

CONTRACT NO. 94911



TYPICAL SECTION
 STA. 938+38 TO STA 946+80

REVISIONS	
NAME	DATE

ILLINOIS DEPARTMENT OF TRANSPORTATION

TYPICAL SECTIONS

SCALE: VERT. _____
 HORIZ. _____
 DATE _____

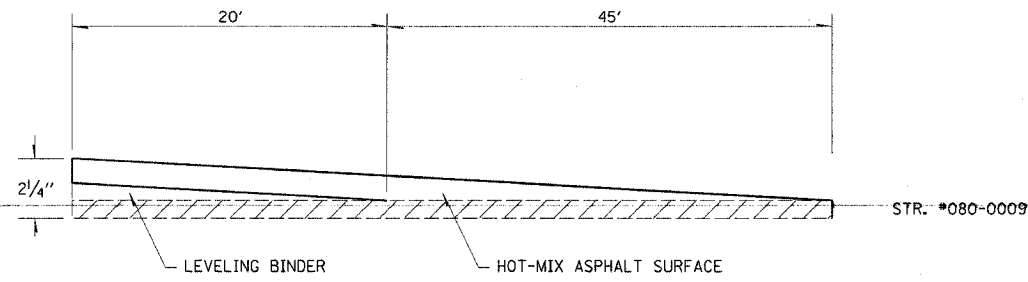
DRAWN BY _____
 CHECKED BY _____

steffenmk
3/12/2007
c:\projects\94911\d\05403pa.dgn

MILL

FAP NO.	SECTION	COUNTY	TOTAL SHEETS	SHEET NO.
116	123RS-3 122RS-4	RICHLAND	27	7
FED. ROAD DIST. NO. 7		ILLINOIS	FED. AID PROJECT NO.	

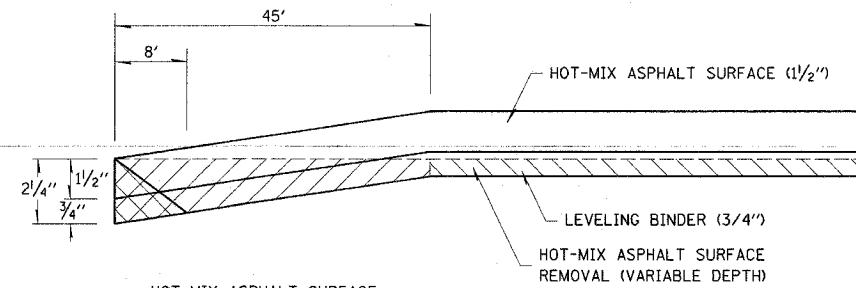
CONTRACT NO. 94911



HOT-MIX ASPHALT SURFACE REMOVAL (VARIABLE DEPTH)

HOT-MIX ASPHALT FEATHER DETAIL

STA 895+50 TO STA 896+15



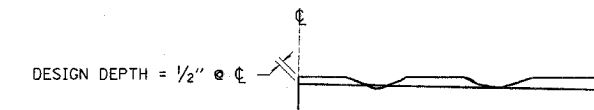
HOT-MIX ASPHALT SURFACE REMOVAL BUTT JOINT

HOT-MIX ASPHALT SURFACE REMOVAL (VARIABLE DEPTH)

TEMPORARY RAMP

BUTT JOINT DETAIL

- STA 582+71 TO STA 583+16
- STA 744+53 TO STA 744+98
- STA 746+53 TO STA 746+98
- STA 898+18 TO STA 898+63
- STA 934+82 TO STA 935+27



NOTES:

1. MILLING SHALL BE DONE TO ATTAIN A 3/16" SLOPE IN CROWN SECTIONS
2. EXISTING S.E. AND S.E. TRANSITIONS SHALL BE MAINTAINED UNLESS OTHERWISE SHOWN ON THE PLANS.
3. MILLING TO THE BOTTOM OF WHEEL RUTS SHALL NOT BE NECESSARY UNLESS REQUIRED TO OBTAIN SLOPE OR THE DESIGN DEPTH AT CENTERLINE.
4. THE AVERAGE DEPTH OF MILLING IS ESTIMATED TO BE 1/2" BUT MAY VARY IN ISOLATED LOCATIONS.

HOT-MIX ASPHALT SURFACE REMOVAL (VARIABLE DEPTH) DETAIL

REVISIONS	
NAME	DATE

ILLINOIS DEPARTMENT OF TRANSPORTATION

**MILLING
DETAILS**

SCALE: VERT. _____
HORIZ. _____

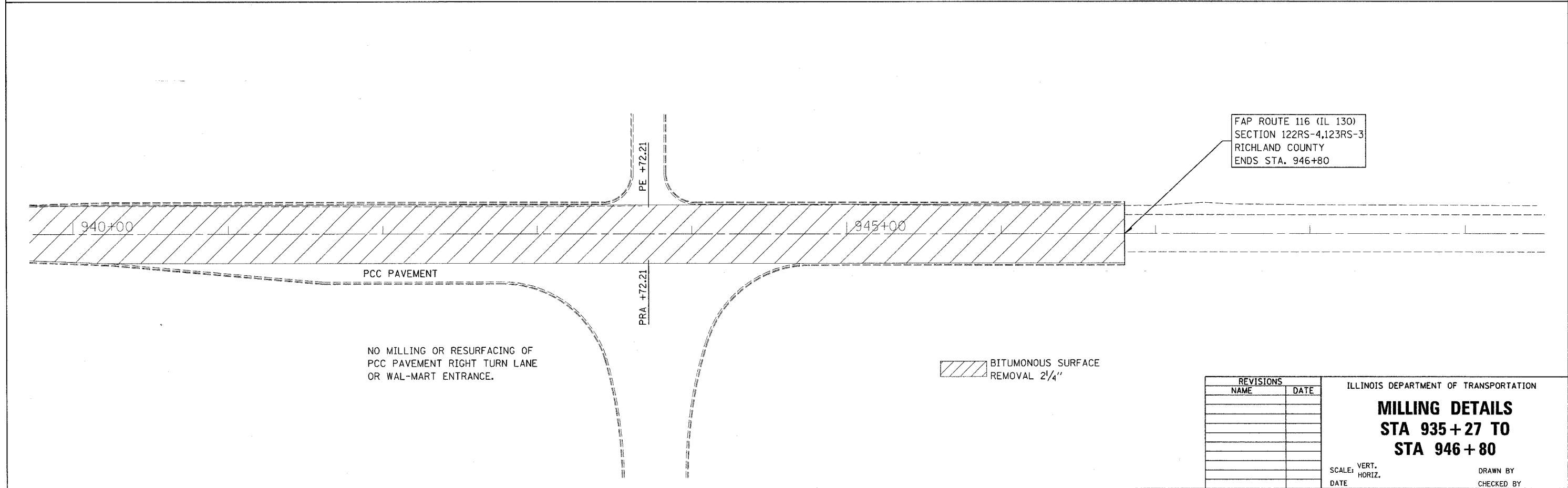
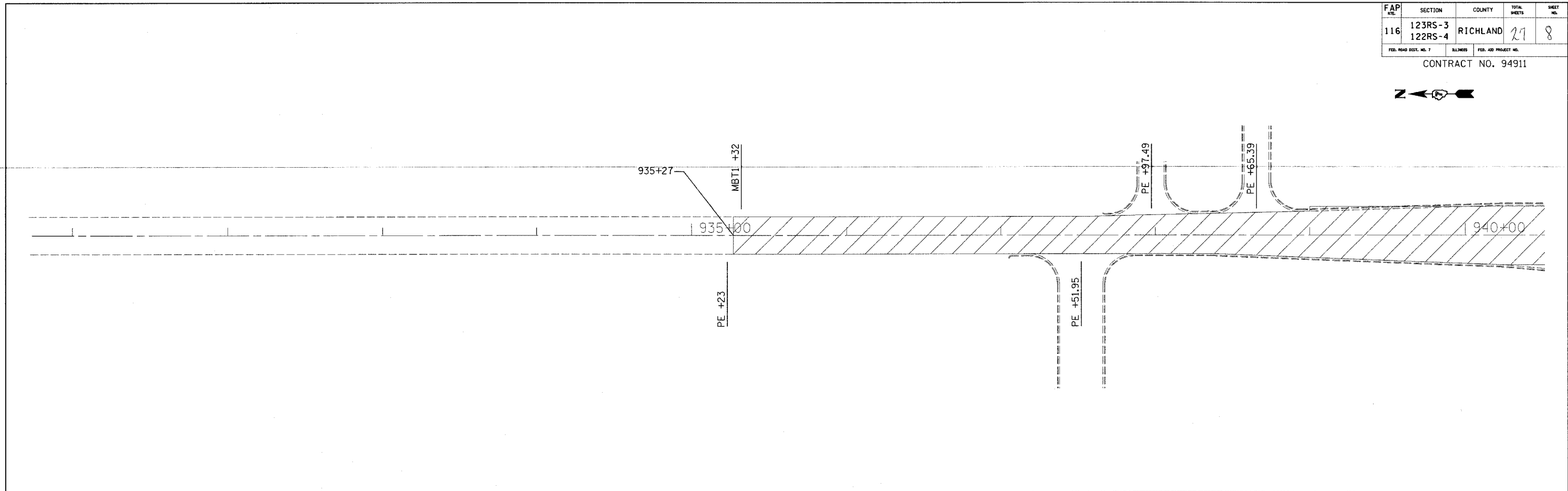
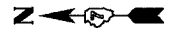
DATE _____ DRAWN BY _____
CHECKED BY _____

steffenmk
3/12/2007
c:\projects\94911d\05403pa.dgn

MILL

FAP EST.	SECTION	COUNTY	TOTAL SHEETS	SHEET NO.
116	123RS-3 122RS-4	RICHLAND	27	8
FED. ROAD DIST. NO. 7		BLISS	FED. AID PROJECT NO.	

CONTRACT NO. 94911



FAP ROUTE 116 (IL 130)
SECTION 122RS-4,123RS-3
RICHLAND COUNTY
ENDS STA. 946+80

NO MILLING OR RESURFACING OF
PCC PAVEMENT RIGHT TURN LANE
OR WAL-MART ENTRANCE.

BITUMINOUS SURFACE
REMOVAL 2 1/4"

REVISIONS	
NAME	DATE

ILLINOIS DEPARTMENT OF TRANSPORTATION

MILLING DETAILS
STA 935 + 27 TO
STA 946 + 80

SCALE: VERT.
HORIZ.
DATE

DRAWN BY
CHECKED BY

steffenmk
3/12/2007
c:\projects\94911d\05403pa.dgn
PAV SCH

FAP NO.	SECTION	COUNTY	TOTAL SHEETS	SHEET NO.
116	123RS-3 122RS-4	RICHLAND	27	9
FED. ROAD DIST. NO. 7		ILLINOIS	FED. AID PROJECT NO.	

CONTRACT NO. 94911

PAVING SCHEDULE

STATION TO STATION	LENGTH	PAVEMENT WIDTH	AREA	BITUMINOUS MATERIALS (PRIME COAT)	AGGREGATE (PRIME COAT)	HOT-MIX ASPHALT CONCRETE SURFACE COURSE, MIX "D", N70	LEVELING BINDER (MACHINE METHOD), N70	HOT-MIX ASPHALT SURFACE REMOVAL - BUTT JOINT	HOT-MIX ASPHALT SURFACE REMOVAL - 2 1/4"	HOT-MIX ASPHALT SURFACE REMOVAL - VARIABLE DEPTH	AGGREGATE SHOULDERS, TYPE B	TEMPORARY RAMP (SPECIAL)	TEMPORARY RAMP
	FEET	FEET	SQ YD	GALLON	TON	TON	TON	SQ YD	SQ YD	SQ YD	TON	SQ YD	SQ YD
58271 to 74498	16227	30	54090.0	5409.0	108.2	4543.6	2271.8	300.0		53790.0	1213.7		83.4
74498 to 74653	155	30	516.7	Omit Bridge									
74653 to 89615	14962	30	49873.3	4987.3	99.7	4189.4	2094.7	150.0		49723.3	1042.1		41.7
89615 to 89818	203	30	676.7	Omit Bridge									
89818 to 91862	2044	30	6813.3	681.3	13.6	572.2	286.2	150.0	288.0	6663.3	135.2		41.7
91832 to 93705	1873	30	6243.3	614.3	12.3	516.0	258.0	150.0	273.3	5400.0	72.0		
93705 to 93766	61	27	183.0	18.3	0.4	15.4	7.7		162.7		2.7	13.3	
93766 to 93838	72	24	192.0	19.2	0.4	16.1	8.1		192.0			6.7	
93838 to 93900	62	VARIES	175.7	17.6	0.4	14.8	7.4		175.7			6.7	
93900 to 94023	123	VARIES	464.7	46.5	0.9	39.0	19.5		464.7				
94023 to 94680	657	38	2774.0	277.4	5.6	233.0	116.5		2774.0			104.9	41.7
TOTALS				12071	242	10140	5070	750	4331	115577	2466	132	209

PAVMENT MARKING SCHEDULE

STATION TO STATION	LENGTH	PAVEMENT WIDTH	AREA	SHORT TERM PAVEMENT MARKING	WORK ZONE PAVEMENT MARKING REMOVAL	PAINT PAVEMENT MARKING - LINE 4"	THERMOPLASTIC PAVEMENT MARKING - LINE 4"	TEMPORARY PAVEMENT MARKING - LINE 4"	THERMOPLASTIC PAVEMENT MARKING - LINE 6"	TEMPORARY PAVEMENT MARKING - LINE 6"	THERMOPLASTIC PAVEMENT MARKING - LINE 12"	TEMPORARY PAVEMENT MARKING - LINE 12"	THERMOPLASTIC PAVEMENT MARKING - LINE 24"	TEMPORARY PAVEMENT MARKING - LINE 24"	THERMOPLASTIC PAVEMENT MARKING - LETTERS AND SYMBOLS	TEMPORARY PAVEMENT MARKING - LETTERS AND SYMBOLS	RAISED REFLECTIVE PAVEMENT MARKER
	FEET	FEET	SQ YD	FOOT	SQ FT	FOOT	FOOT	FOOT	FOOT	FOOT	FOOT	FOOT	FOOT	FOOT	SQ FT	SQ FT	EACH
58271 to 74498	16227	30	54090.0	6490.8	540.4	37456.8		37456.8									202.8
74498 to 74653	155	30	516.7			503.8		503.8									
74653 to 89615	14962	30	49873.3	5984.8	498.2	36580.5		36580.5									187.0
89615 to 89818	203	30	676.7			456.8		456.8									
89818 to 91862	2044	30	6813.3	817.6	68.1												
91862 to 93705	1843	30	6143.3	737.2	61.4	10929.8		10929.8									48.6
93705 to 93766	61	27	183.0	24.4	2.0	137.3		137.3									0.8
93766 to 93806	40	24	106.7	16	1.3		80.0	80.0									2.0
93806 to 94221	415	VARIES	1561.7	300.8	25.0		1350.0	1072.0	150.0	150.0	188.7	188.7					22.3
94221 to 94321	100	38	422.2	167	13.9		432.0	710.0	129.0	129.0			50.0	50.0			10.0
94321 to 94415	94	38	396.9	0	0.0		0.0	0.0							140.4	140.4	0.0
94415 to 94565	150	38	633.3	116	10.0		300.0	300.0	140.0	140.0			26.0	26.0			11.3
94565 to 94680	115	38	485.6	92	7.7		460.0	460.0									5.8
TOTALS				14747	1228	86065	2622	88687	419	419	189	189	76	76	140	140	491

REVISIONS	
NAME	DATE

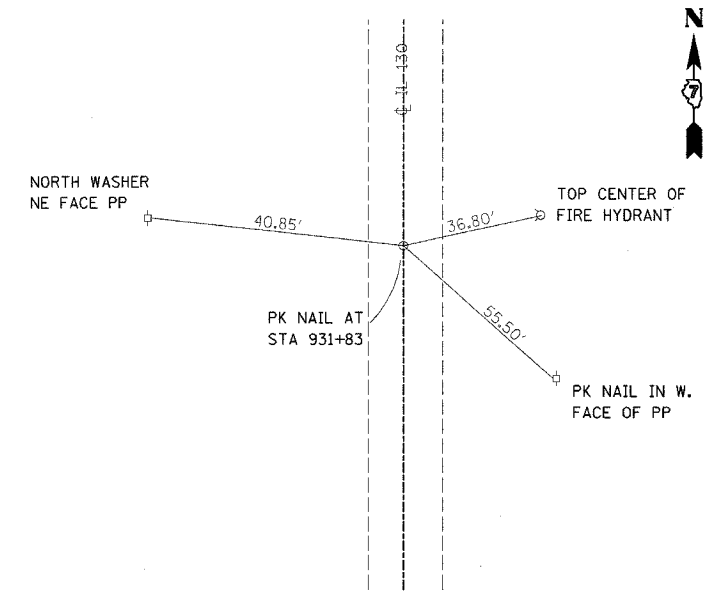
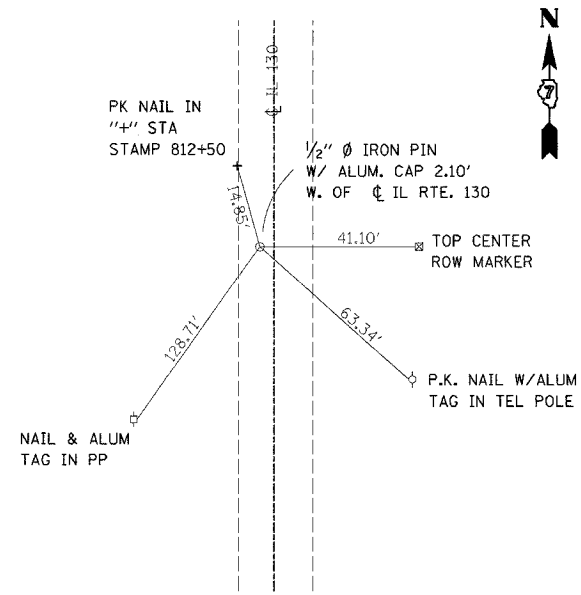
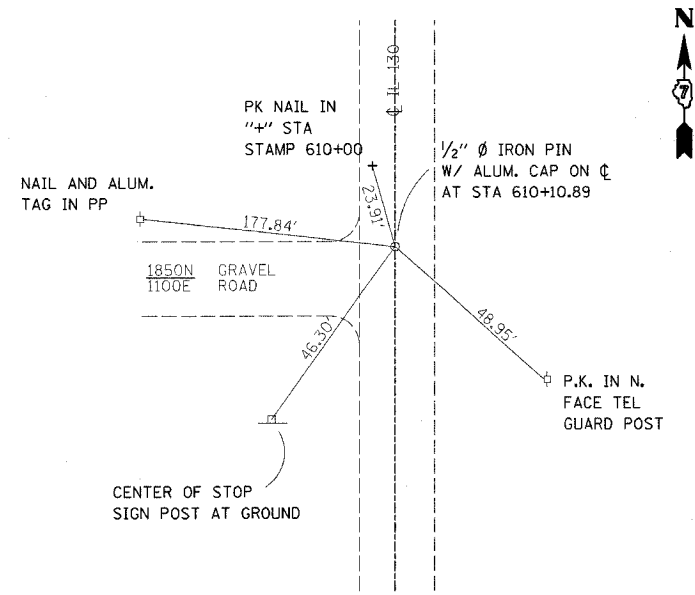
ILLINOIS DEPARTMENT OF TRANSPORTATION
PAVING SCHEDULE & PAVEMENT MARKING SCHEDULE
SCALE: VERT. / HORIZ. / DATE
DRAWN BY / CHECKED BY

stef fermk
3/12/2007
c:\projects\94911d\05403pa.dgn

TIES

FAP No.	SECTION	COUNTY	TOTAL SHEETS	SHEET NO.
116	123RS-3 122RS-4	RICHLAND	27	10
FED. ROAD DIST. NO. 1		ILLINOIS	FED. AID PROJECT NO.	

CONTRACT NO. 94911

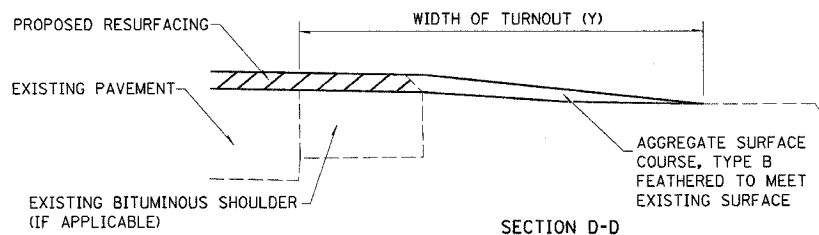
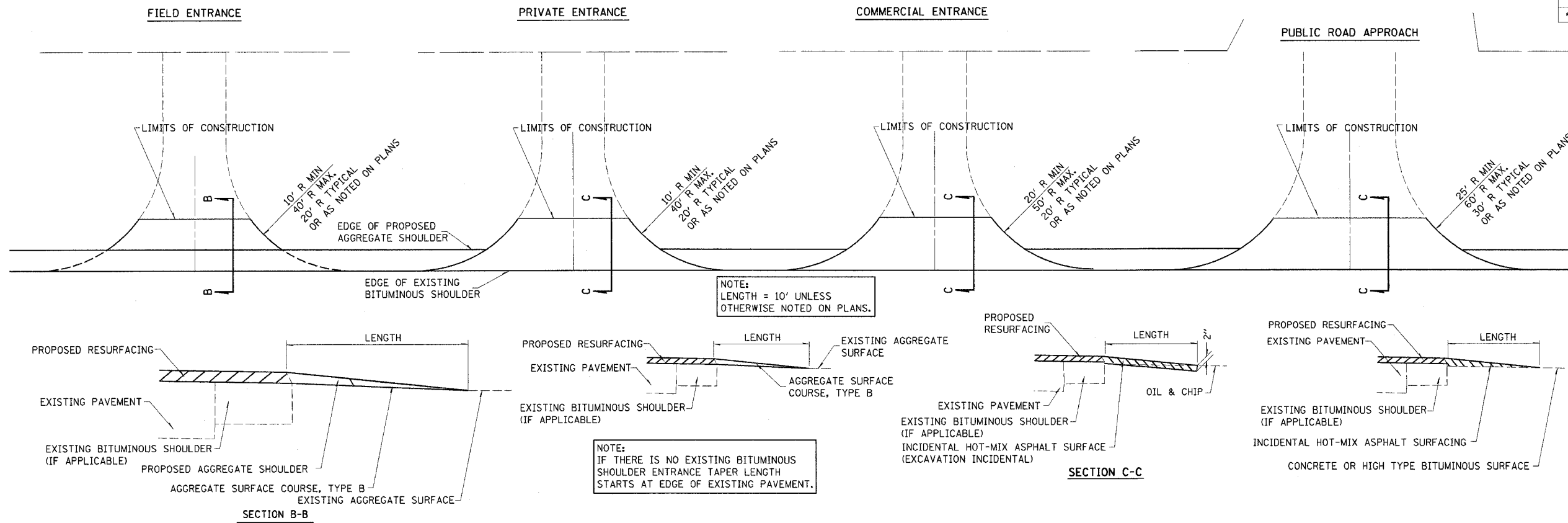


REVISIONS	
NAME	DATE

ILLINOIS DEPARTMENT OF TRANSPORTATION
PERMANENT SURVEY MARKERS
 SCALE: VERT. _____
 HORIZ. _____
 DATE _____
 DRAWN BY _____
 CHECKED BY _____

FAP 116	SECTION 123RS-3 122RS-4	COUNTY RICHLAND	TOTAL SHEETS 27	SHEET 11
FED. ROAD DIST. NO. 7		ILLINOIS	FED. AID PROJECT NO.	

CONTRACT NO. 94911



TYPICAL SECTION AT MAILBOX TURNOUT
 NOTE: SEE STANDARD 406201 FOR MAILBOX TURNOUT DETAILS

SIDE	STATION	TYPE	INCIDENTAL HOT-MIX ASPHALT SURFACING*		AGGREGATE SURFACE COURSE, TYPE B
			TON	TON	
LT	583+47	PE		4.4	
RT	583+55	FE		1.2	
RT	595+35	FE		1.3	
RT	597+50	PE		1.9	
LT	597+50	MBT		2.1	
RT	598+55	PE		2.0	
LT	598+60	MBT		2.1	
RT	602+38	PE		4.0	
LT	602+45	PE		1.4	
RT	603+20	PE		2.4	
LT	603+23	MBT		1.9	
RT	605+58	PE		2.1	
LT	605+61	MBT		2.1	
RT	606+57	PE		1.1	
LT	606+78	MBT		2.1	
RT	607+10	FE		1.4	
RT	610+20	PRA	2.5		
RT	619+90	PE		2.2	
RT	623+56	FE		1.3	
LT	623+56	PRA	3		
LT	623+70	FE		1.3	
RT	637+05	PRA	4.4		
LT	637+05	PRA	4.3		
RT	637+71	PE		2.2	
LT	638+34	PE		3.7	
RT	638+81	FE		1.3	
RT	639+87	MBT		2.1	
LT	640+46	PE		2.2	
RT	643+73	PE		1.6	
LT	644+69	PE		3.0	
LT	646+38	PE		2.7	
LT	648+05	FE		1.5	
RT	650+94	PE		1.6	
RT	651+16	MBT		1.3	
RT	652+23	PE		1.5	
RT	655+07	FE		1.5	
RT	657+38	PE		2.0	
RT	657+52	MBT		1.3	
RT	663+29	FE		1.8	
LT	663+74	PRA		2.2	
RT	663+91	FE		1.6	
LT	677+23	FE		1.4	
RT	677+50	FE		1.2	
LT	682+60	PE	2.6		
RT	682+60	PE	2.9		
LT	690+54	PRA	2.4		
RT	690+65	FE		2.1	
RT	693+93	MBT		2.1	
RT	694+05	PE		1.5	
LT	698+20	FE		1.2	
LT	700+96	FE		1.2	
LT	702+75	PE		1.9	
RT	708+99	MBT		2.1	
LT	709+05	PE		1.9	
RT	713+99	PE		2.3	
RT	714+26	MBT		1.3	
RT	714+90	MBT		1.3	
LT	714+90	PE		3.3	
RT	719+32	MBT		2.1	
LT	719+70	PE		2.5	
LT	723+00	PE		1.7	
RT	723+22	PE		2.4	
RT	723+38	MBT		1.3	
LT	724+30	MBT		1.3	
LT	724+83	PE		2.6	
LT	727+61	FE	5.3		
LT	729+74	FE		2.1	
RT	731+68	MBT		1.3	
RT	731+80	PE		2.0	
RT	733+56	PE		2.0	
RT	733+70	MBT		1.3	
PE	736+06	PE		2.0	
RT	736+21	MBT		1.3	
RT	737+60	PE		1.9	
RT	737+77	MBT		1.3	
RT	744+55	PRA		1.8	
LT	746+84	PRA	3.6		
LT	756+53	FE		1.5	
RT	759+50	PE		2.9	
RT	762+82	PE		2.1	
RT	763+02	MBT		2.1	
LT	764+27	FE		1.2	
RT	766+96	PE		2.4	
RT	767+20	MBT		1.3	
RT	771+69	FE		1.3	
RT	773+11	FE		2.7	
RT	773+30	FE		1.1	
LT	773+45	MBT		1.3	
RT	778+41	PE		1.9	
LT	779+26	MBT		1.3	
LT	779+39	PE		2.4	
LT	780+75	MBT		1.3	
LT	780+88	PE	1.7		
RT	782+50	FE		1.7	
RT	783+22	PE		1.6	
LT	784+75	PE		1.9	
LT	784+92	MBT		1.3	
LT	785+95	MBT		1.3	
LT	786+08	PE		1.7	
LT	792+00	MBT		1.3	
LT	792+15	PE		2.0	
RT	795+05	CE		4.1	
LT	795+05	PE		1.7	
RT	798+20	PE		1.5	
RT	798+41	MBT		2.1	
LT	799+46	PRA	2.9		
LT	799+46	PRA	3.4		
RT	804+78	PE		1.7	
LT	804+78	FE		1.3	
LT	805+28	MBT		2.1	
RT	815+22	FE		2.3	
LT	816+36	PE		2.8	
LT	816+85	MBT		2.1	
LT	822+50	PE		2.1	
RT	822+77	PE		3.5	
RT	826+00	PE		2.3	
LT	830+21	MBT		2.1	
LT	831+20	PE	2.1		
LT	832+82	PE		1.1	
LT	836+85	PE		1.8	
RT	837+75	PE		2.3	
LT	838+50	PE		2.1	
RT	838+83	PE		0.8	
RT	843+77	PE		1.8	
RT	845+66	FE		1.7	
RT	847+00	MBT		2.1	
RT	847+50	PE		2.9	
LT	850+50	FE		1.1	
RT	852+07	PRA	4.7		
LT	852+31	FE		1.4	
LT	854+13	MBT		1.3	
LT	854+23	PE		2.1	
LT	855+18	CE		4.5	
LT	857+25	MBT		1.6	
LT	857+69	MBT		1.3	
LT	857+76	PE		1.7	
LT	860+25	CE	5.8		
LT	863+58	PE		1.7	
LT	863+77	MBT		1.3	
LT	865+31	PRA	3.7		
RT	865+48	CE	4.4		
LT	866+65	PE		2.7	
LT	867+55	PE		1.8	
LT	868+81	MBT		1.3	
LT	868+95	PE		2.2	
LT	871+58	MBT		1.3	
LT	871+70	PE		1.8	
LT	873+80	PE		2.0	
LT	874+12	PRA	3.6		
LT	874+24	PE		1.8	
RT	881+65	PRA		4.0	
RT	882+22	CE		8.0	
LT	882+22	MBT		1.3	
RT	882+53	CE		4.3	
RT	886+57	PRA	3.3		
LT	892+53	MBT		1.3	
LT	892+67	PE		2.7	
RT	892+88	PRA	4.9		
RT	895+76	FE		2.0	
RT	905+13	PE		2.7	
RT	905+13	PE		5.1	
RT	905+62	MBT		2.1	
RT	907+80	PRA		4.4	
LT	914+40	FE		1.6	
LT	917+20	MBT		2.1	
RT	917+43	PE		2.9	
RT	918+38	PE		2.3	
LT	918+62	PRA	4.5		
LT	920+10	MBT		1.3	
LT	920+31	PE		1.9	
LT	921+15	CE		2.8	
LT	921+58	CE		2.5	
LT	923+88	CE		4.8	
LT	924+48	MBT	3.4		
LT	925+25	PE		5.4	
RT	926+18	CE	2.5		
LT	926+23	PE		2.2	
LT	926+45	MBT		1.3	
RT	927+37	CE		2.5	
LT	928+20	MBT		1.3	
RT	928+52	PE		2.0	
LT	928+60	CE		4.0	
RT	929+94	PE		1.6	
RT	930+27	PE		2.2	
RT	930+58	PRA		4.1	
RT	930+91	PE		2.4	
RT	931+30	PE		3.3	
RT	931+71	PE		1.3	
LT	931+83	PE		1.3	
LT	932+39	MBT		1.1	
RT	935+39	PE		1.0	
RT	935+52	MBT		1.3	
TOTALS:			86.0	368.0	

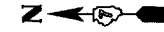
FE - FIELD ENTRANCE PRA - PUBLIC ROAD APPROACH
 PE - PRIVATE ENTRANCE MBT - MAILBOX TURNOUT
 CE - COMMERCIAL ENTRANCE

*BITUMINOUS MATERIALS AND AGGREGATE (PRIME COAT) FOR ENTRANCES AND PUBLIC ROAD APPROACHES SHALL BE CONSIDERED INCIDENTAL TO INCIDENTAL HOT-MIX ASPHALT SURFACING AS NOTED IN THE SPECIAL PROVISIONS

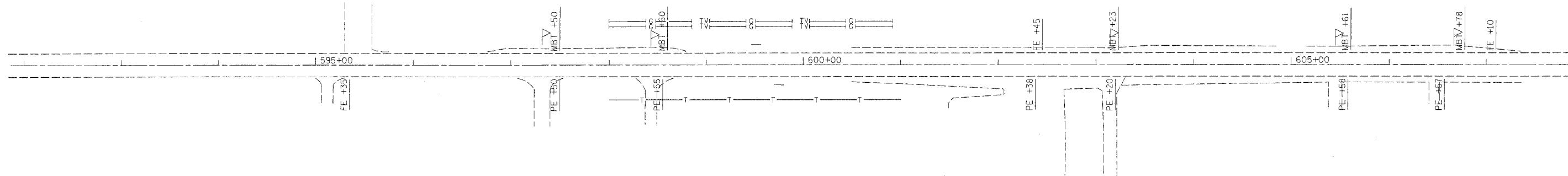
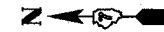
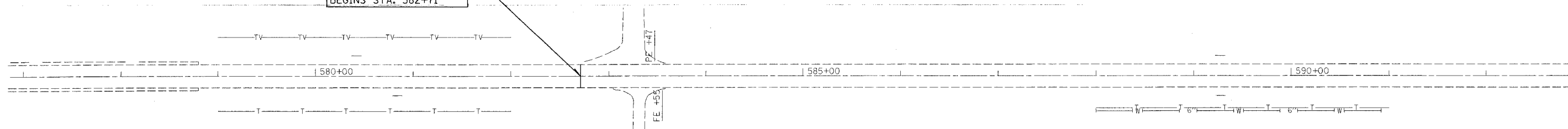
steffenmk
3/12/2007
c:\projects\94911d\05403pa.dgn

FAP NO.	SECTION	COUNTY	TOTAL SHEETS	SHEET NO.
116	123RS-3 122RS-4	RICHLAND	27	12
FED. ROAD DIST. NO. 7		ILLINOIS	FED. AID PROJECT NO.	

CONTRACT NO. 94911



FAP ROUTE 116 (IL 130)
SECTION 122RS-4, 123RS-3
RICHLAND COUNTY
BEGINS STA. 582+71



REVISIONS	
NAME	DATE

ILLINOIS DEPARTMENT OF TRANSPORTATION

STA. 582 + 71
TO
STA. 607 + 00

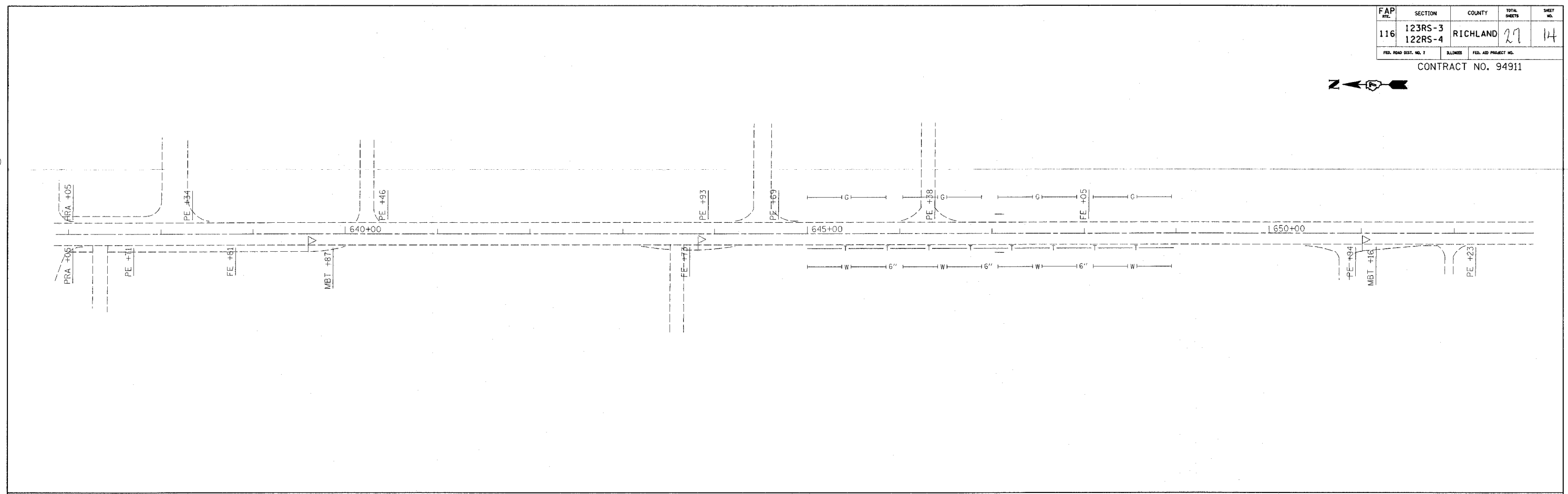
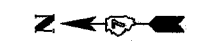
SCALE: VERT. _____
HORIZ. _____

DATE _____ DRAWN BY _____
CHECKED BY _____

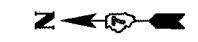
steffermk
3/12/2007
c:\projects\94911d\05403pa.dgn

FAP	SECTION	COUNTY	TOTAL SHEETS	SHEET NO.
116	123RS-3 122RS-4	RICHLAND	27	14
FED. ROAD DIST. NO. 7		BLINDS	FED. AID PROJECT NO.	

CONTRACT NO. 94911



1750N
1100E



REVISIONS	
NAME	DATE

ILLINOIS DEPARTMENT OF TRANSPORTATION

**STA. 637 + 00
TO
STA. 667 + 00**

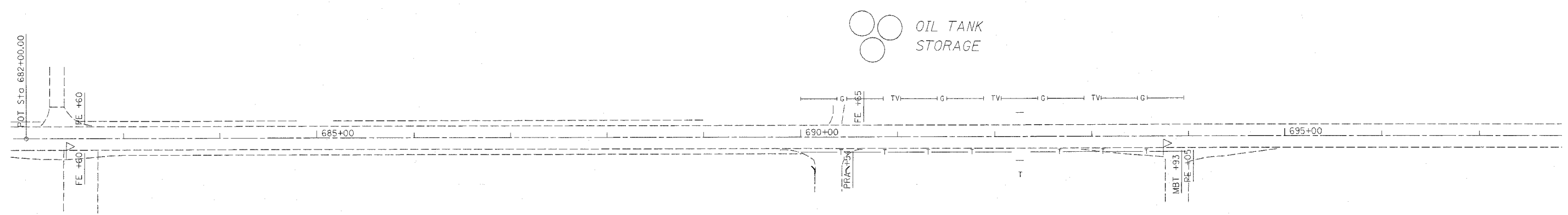
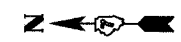
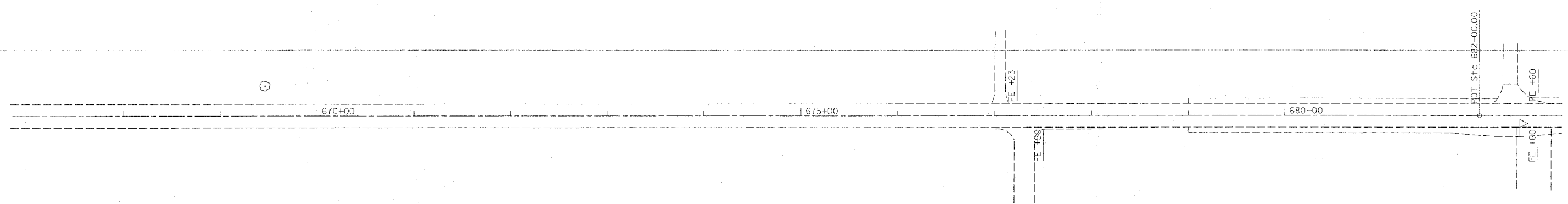
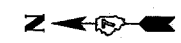
SCALE: VERT.
HORIZ.
DATE

DRAWN BY
CHECKED BY

steffenmk
3/12/2007
c:\projects\94911d\05403pa.dgn

FAP A/E	SECTION	COUNTY	TOTAL SHEETS	SHEET NO.
116	123RS-3 122RS-4	RICHLAND	27	15
FED. ROAD DIST. NO. 7		ILLINOIS	FED. AID PROJECT NO.	

CONTRACT NO. 94911



OIL TANK STORAGE

1700N
1100E

REVISIONS	
NAME	DATE

ILLINOIS DEPARTMENT OF TRANSPORTATION

**STA. 667 + 00
TO
STA. 697 + 00**

SCALE: VERT. _____
HORIZ. _____

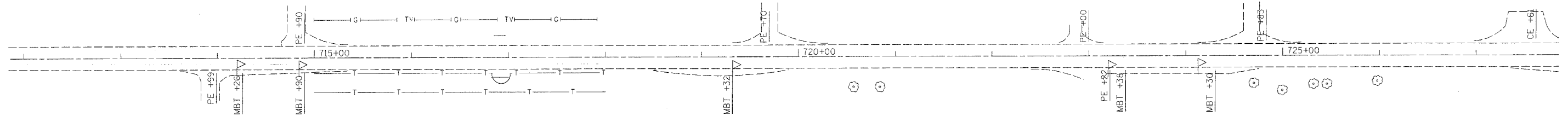
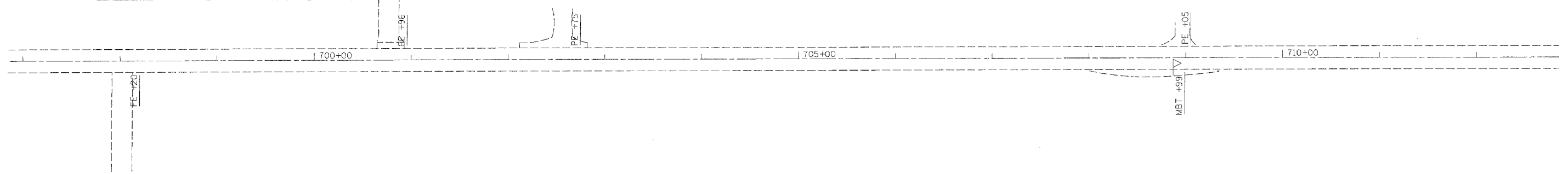
DATE _____ DRAWN BY _____
CHECKED BY _____

steffenmk
 3/12/2007
 c:\projects\94911d\05403pa.dgn

5

FAP ATEL	SECTION	COUNTY	TOTAL SHEETS	SHEET NO.
116	123RS-3 122RS-4	RICHLAND	27	16
FED. ROAD DIST. NO. 7		LLINOIS	FED. AID PROJECT NO.	

CONTRACT NO. 94911



REVISIONS	
NAME	DATE

ILLINOIS DEPARTMENT OF TRANSPORTATION

**STA. 697 + 00
 TO
 STA. 727 + 00**

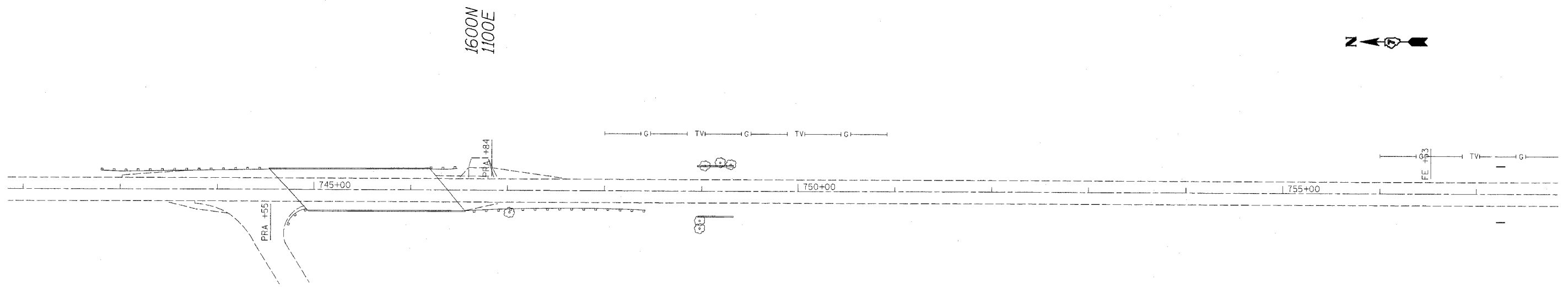
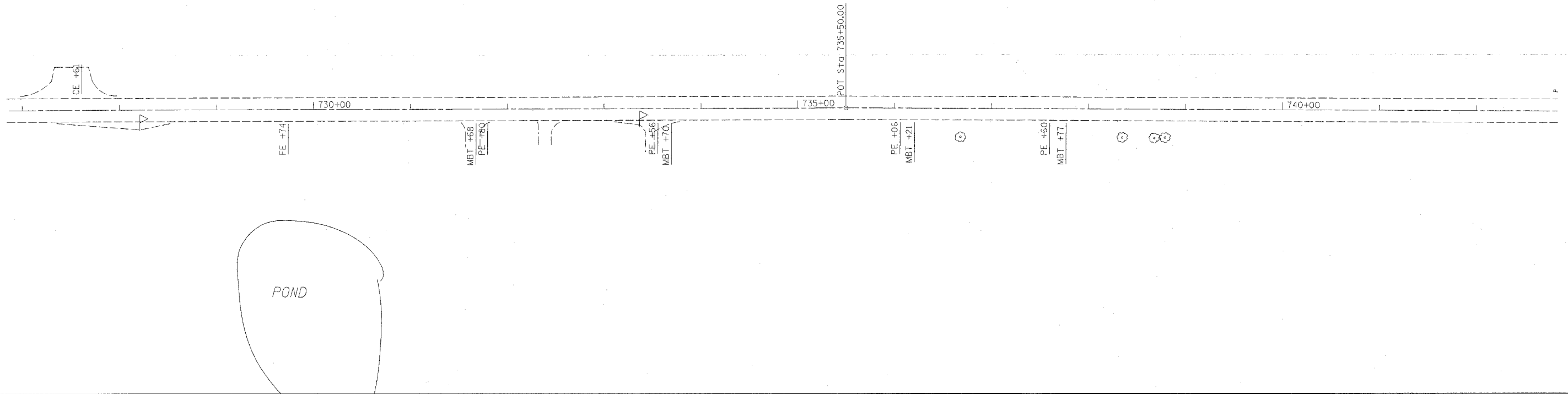
SCALE: VERT.
 HORIZ.
 DATE

DRAWN BY
 CHECKED BY

steffemk
 3/12/2007
 c:\projects\94911d\05403ps.dgn

FAP NO.	SECTION	COUNTY	TOTAL SHEETS	SHEET NO.
116	123RS-3 122RS-4	RICHLAND	27	17
FED. ROAD DIST. NO. 1		ILLINOIS	FED. AID PROJECT NO.	

CONTRACT NO. 94911



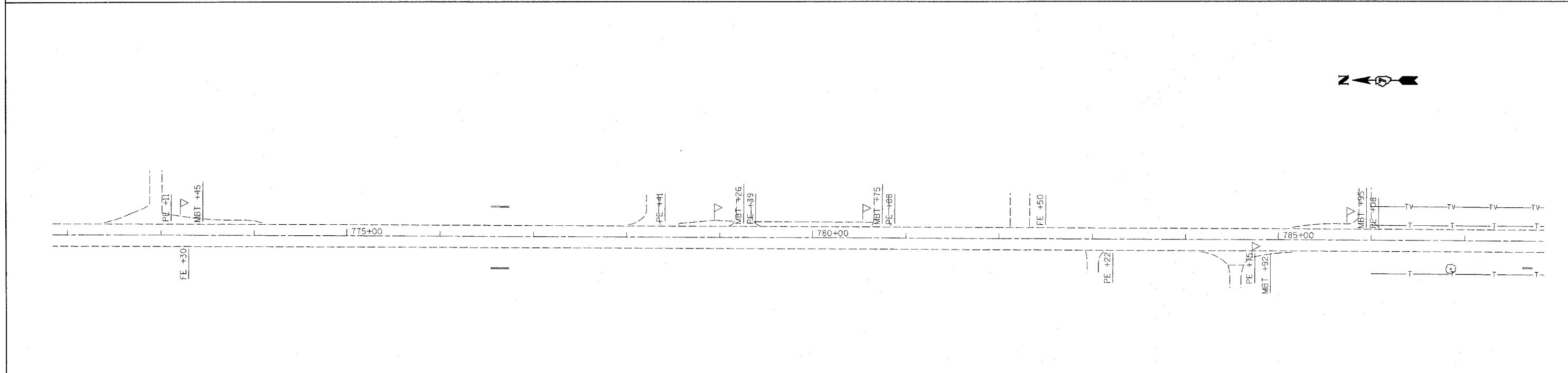
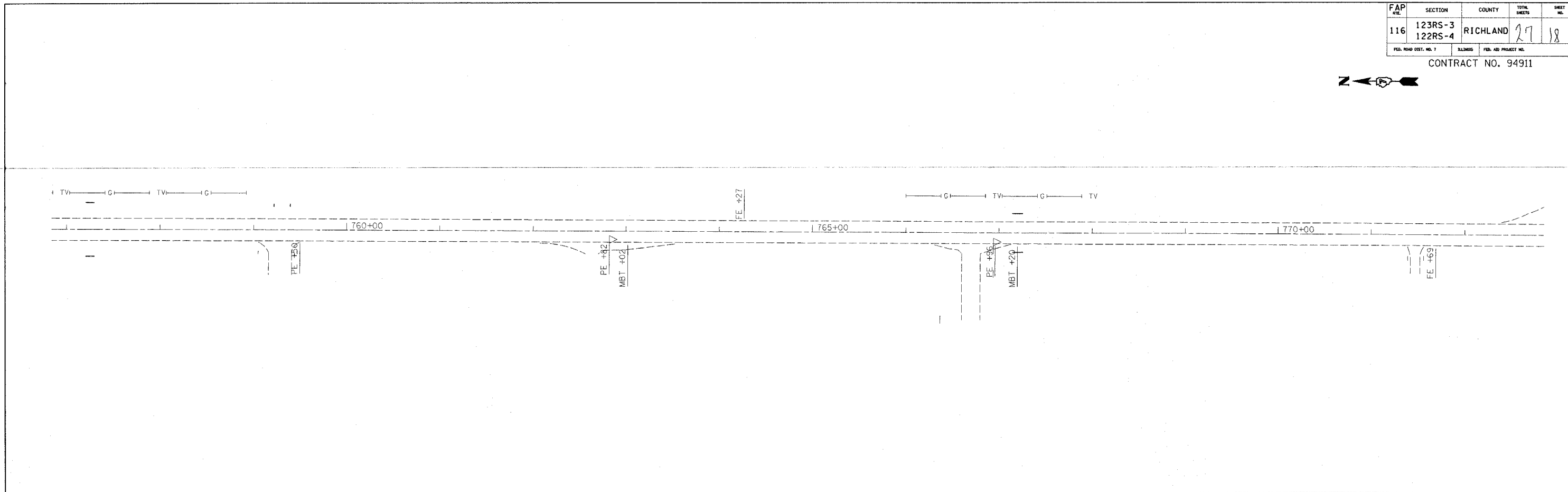
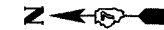
REVISIONS	
NAME	DATE

ILLINOIS DEPARTMENT OF TRANSPORTATION
STA. 727 + 00
TO
STA. 757 + 00
 SCALE: VERT. _____
 DATE _____ HORIZ. _____
 DRAWN BY _____
 CHECKED BY _____

steffenmk
3/12/2007
c:\projects\94911d\05403pa.dgn

FAP NO.	SECTION	COUNTY	TOTAL SHEETS	SHEET NO.
116	123RS-3 122RS-4	RICHLAND	27	18
FED. ROAD DIST. NO. 7		ILLINOIS	FED. AID PROJECT NO.	

CONTRACT NO. 94911



REVISIONS	
NAME	DATE

ILLINOIS DEPARTMENT OF TRANSPORTATION

**STA. 757 + 00
TO
STA. 787 + 00**

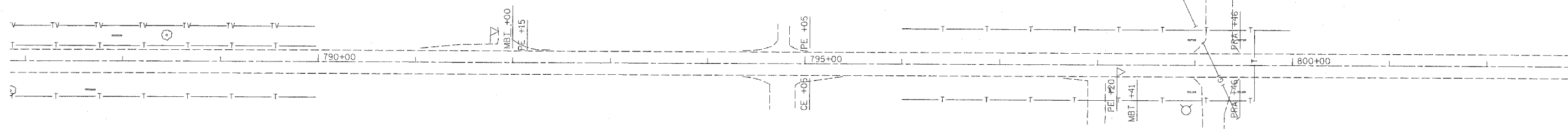
SCALE: VERT. _____
HORIZ. _____

DATE _____ DRAWN BY _____
CHECKED BY _____

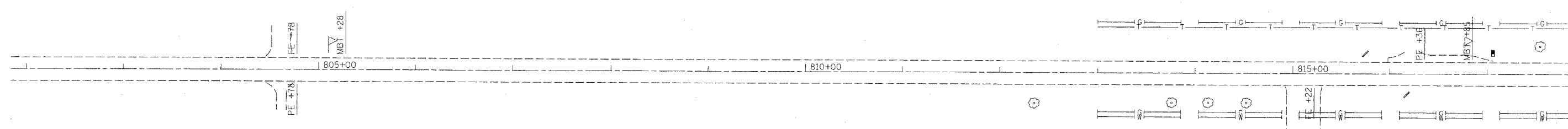
steffenmk
3/12/2007
c:\projects\94911d\05403pa.dgn

FAP NO.	SECTION	COUNTY	TOTAL SHEETS	SHEET NO.
116	123RS-3 122RS-4	RICHLAND	27	19
FED. ROAD DIST. NO. 1		ILLINOIS	FED. AID PROJECT NO.	

CONTRACT NO. 94911



1500N
1100E



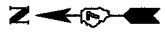
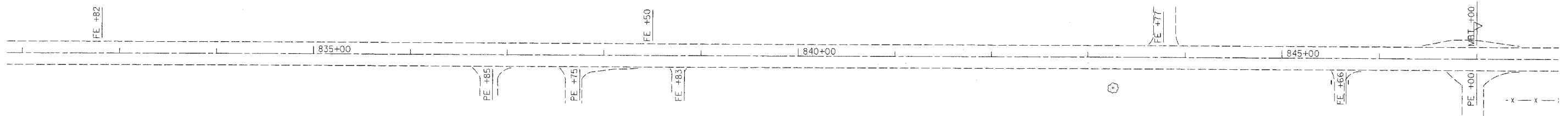
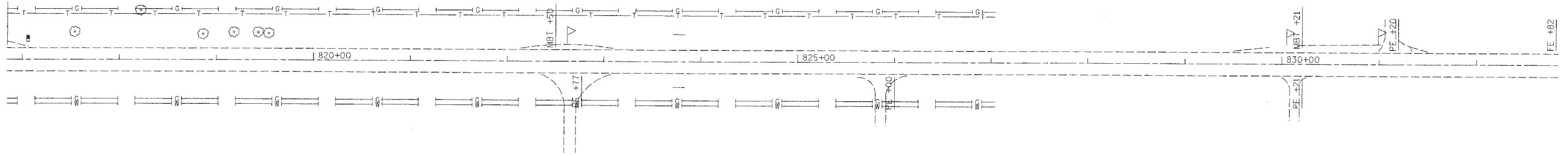
REVISIONS	
NAME	DATE

ILLINOIS DEPARTMENT OF TRANSPORTATION
**STA. 787 + 00
TO
STA. 817 + 00**
SCALE: VERT. DRAWN BY
 HORIZ. CHECKED BY
DATE

steffennk
 3/12/2007
 c:\projects\94911d\05403pa.dgn

FAP NO.	SECTION	COUNTY	TOTAL SHEETS	SHEET NO.
116	123RS-3 122RS-4	RICHLAND	27	20
FED. ROAD DIST. NO. 7		ILLINOIS	FED. AID PROJECT NO.	

CONTRACT NO. 94911



REVISIONS	
NAME	DATE

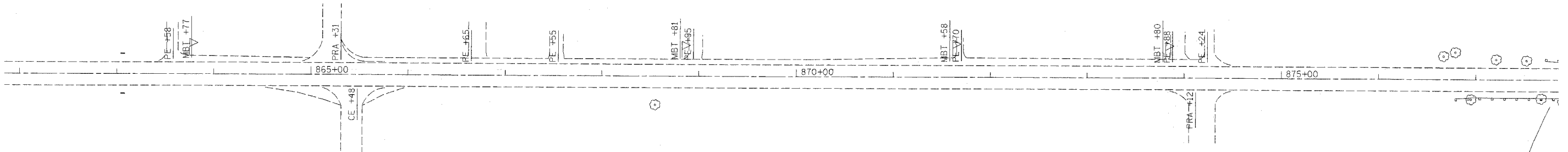
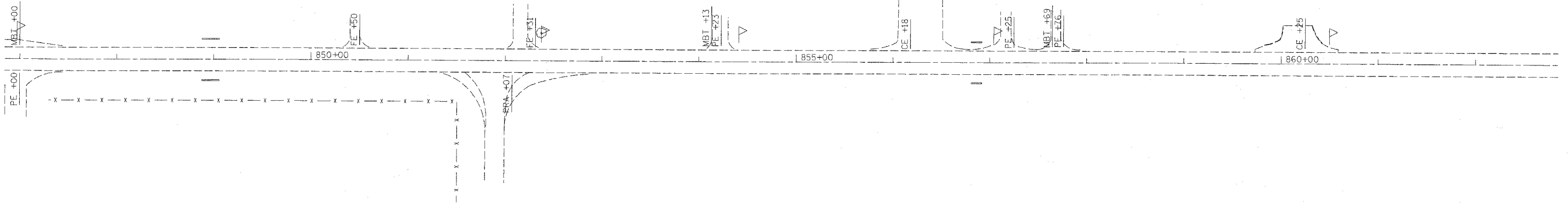
ILLINOIS DEPARTMENT OF TRANSPORTATION
STA. 817 + 00
TO
STA. 847 + 00
 SCALE: VERT. DATE
 HORIZ. DATE
 DRAWN BY
 CHECKED BY

steffenmk
3/12/2007
c:\projects\94911d\d05403pa.dgn

10

FAP NO.	SECTION	COUNTY	TOTAL SHEETS	SHEET NO.
116	123RS-3 122RS-4	RICHLAND	27	21
FED. ROAD DIST. NO. 7		ILLINOIS	FED. AID PROJECT NO.	

CONTRACT NO. 94911



REVISIONS	
NAME	DATE

ILLINOIS DEPARTMENT OF TRANSPORTATION

**STA. 847 + 00
TO
STA. 877 + 00**

SCALE: VERT.
HORIZ.
DATE

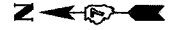
DRAWN BY
CHECKED BY

steffenmk
3/12/2007
c:\projects\94911d\05403pa.dgn

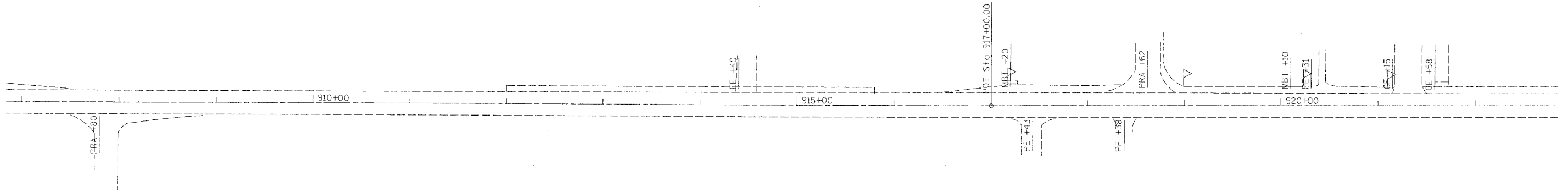
12

FAP RTE.	SECTION	COUNTY	TOTAL SHEETS	SHEET NO.
116	123RS-3 122RS-4	RICHLAND	27	23
FED. ROAD DIST. NO. 7		ILLINOIS	FED. AID PROJECT NO.	

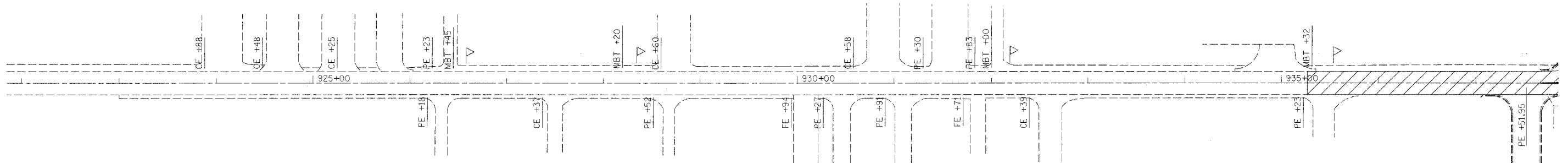
CONTRACT NO. 94911



1275N
1100E



2 1/4" BITUMINOUS
SURFACE REMOVAL



REVISIONS	
NAME	DATE

ILLINOIS DEPARTMENT OF TRANSPORTATION

**STA. 907 + 00
TO
STA. 937 + 00**

SCALE: VERT.
HORIZ.
DATE

DRAWN BY
CHECKED BY

steffenmk
3/12/2007
c:\projects\94911d\05403pa.dgn

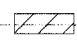
13

FAP RTE.	SECTION	COUNTY	TOTAL SHEETS	SHEET NO.
116	123RS-3 122RS-4	RICHLAND	27	24
FED. ROAD DIST. NO. 7		ILLINOIS	FED. AID PROJECT NO.	

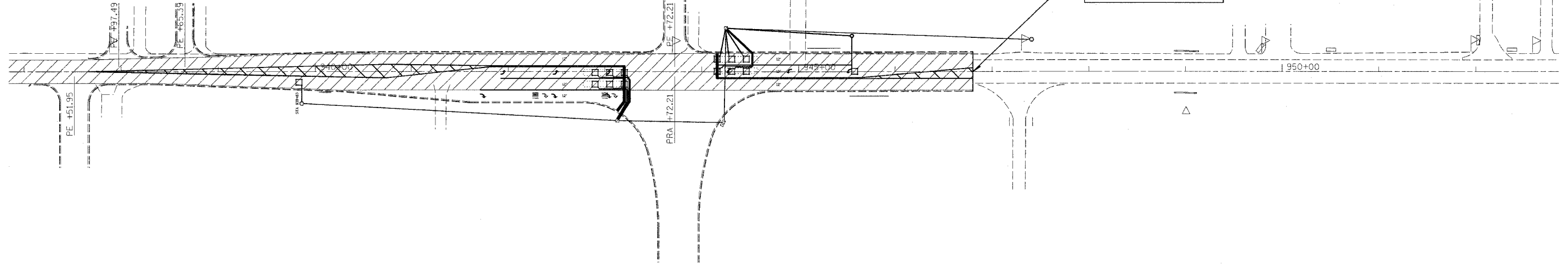
CONTRACT NO. 94911



STA 938+53 TO STA 945+25 - URBAN LIMITS

 2 1/4" BITUMINOUS
SURFACE REMOVAL

FAP ROUTE 116 (IL 130)
SECTION 122RS-4, 123RS-3
RICHLAND COUNTY
ENDS STA. 946+80



REVISIONS	
NAME	DATE

ILLINOIS DEPARTMENT OF TRANSPORTATION

**STA. 937 + 00
TO
STA. 946 + 80**

SCALE: VERT.
HORIZ.
DATE

DRAWN BY
CHECKED BY

steffemk
 3/20/2007
 c:\projects\94911d\d05403pa.dgn

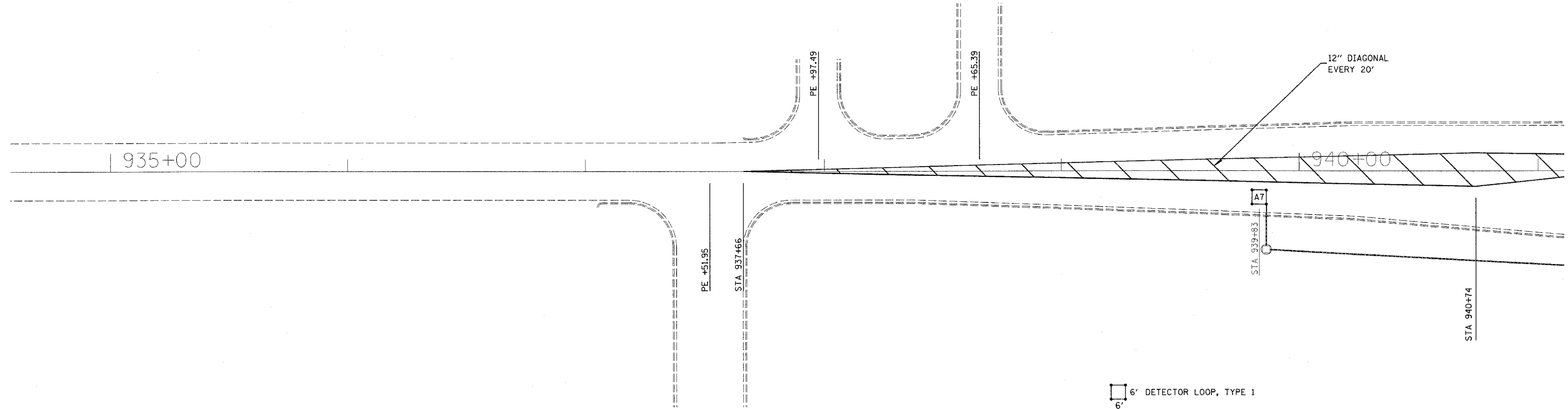
FAP RTE.	SECTION	COUNTY	TOTAL SHEETS	SHEET NO.
116	123RS-3 122RS-4	RICHLAND	27	25
FED. ROAD DIST. NO. 7		BIDDER	FED. AID PROJECT NO.	

CONTRACT NO. 94911



NUMBER OF TURNS REQUIRED IN DETECTOR LOOPS														
5 X 5		6 X 6		6 X 15		6 X 30		6 X 35		6 X 40		6 X 50		LOOP SIZE
FROM	TO	FROM	TO	FROM	TO	FROM	TO	FROM	TO	FROM	TO	FROM	TO	
				0	573	0	491	0	559	0	627	0	764	2 TURNS
682	954	546	818	574	955	492	982	560	1118	628	1255	765	1527	3 TURNS
955	1272	819	1145	956	1432	983	1636	1119	1864	1256	2091	1528	2545	4 TURNS
1273	1636	1146	1527	1433	2005	1637	2455	1865	2795	2092	3136	2546	3818	5 TURNS
1637	2045	1965	2455	2006	2673	2455	3436	2796	3914					6 TURNS
2046	2499	2456	3000	2674	3436									7 TURNS
														8 TURNS
														9 TURNS
														10 TURNS

THE NUMBERS IN THE TABLE REPRESENT THE DISTANCE FROM THE CABINET TO THE DETECTOR LOOP IN FEET



REVISIONS	
NAME	DATE

ILLINOIS DEPARTMENT OF TRANSPORTATION
PAVEMENT MARKING
DETAILS & DETECTOR LOOPS
STA 937+66 TO
STA 941+00

SCALE: VERT. _____
 HORIZ. _____

DATE _____ DRAWN BY _____
 CHECKED BY _____

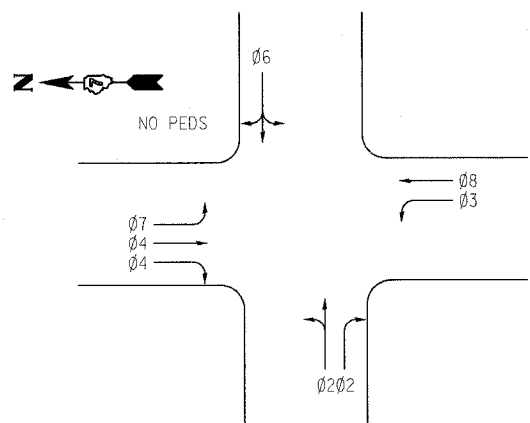
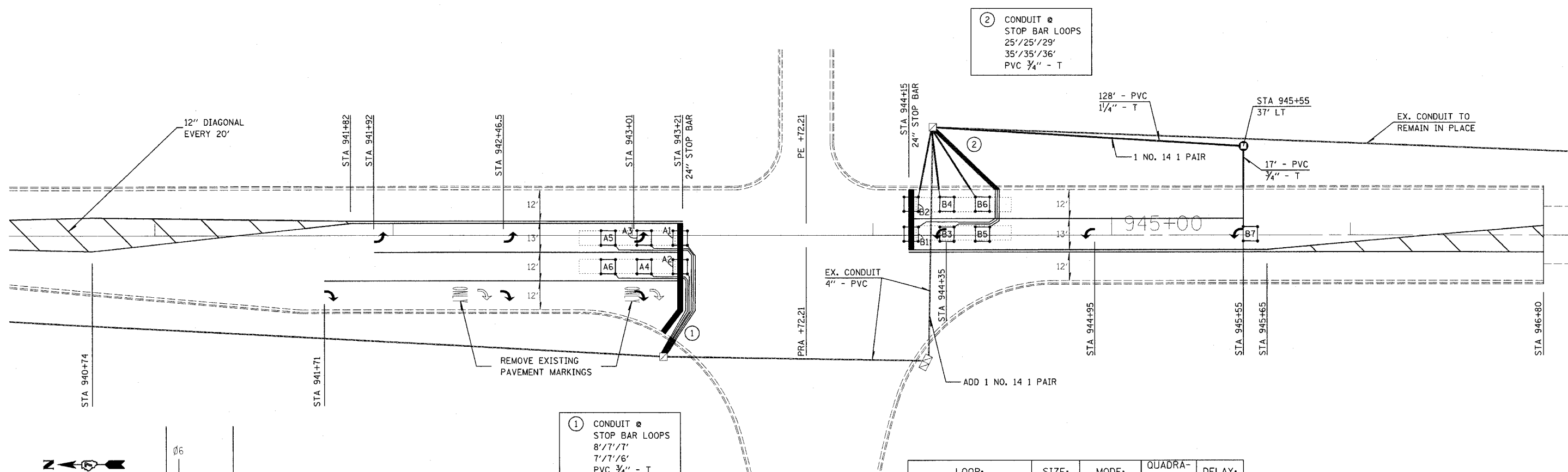
staffemk
3/20/2007
c:\projects\94911\d05403pa.dgn

FAP NO.	SECTION	COUNTY	TOTAL SHEETS	SHEET NO.
116	123RS-3 122RS-4	RICHLAND	27	26

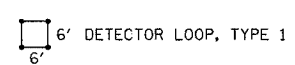
CONTRACT NO. 94911

NUMBER OF TURNS REQUIRED IN DETECTOR LOOPS														LOOP SIZE
5 X 5		6 X 6		6 X 15		6 X 30		6 X 35		6 X 40		6 X 50		
FROM	TO	FROM	TO	FROM	TO	FROM	TO	FROM	TO	FROM	TO	FROM	TO	
0	681	0	545	0	573	0	491	0	559	0	627	0	764	2 TURNS
682	954	546	818	574	955	492	982	560	1118	628	1255	765	1527	3 TURNS
955	1272	819	1145	956	1432	983	1636	1119	1864	1256	2091	1528	2545	4 TURNS
1273	1636	1146	1527	1433	2005	1637	2455	1865	2795	2092	3136	2546	3818	5 TURNS
1637	2045	1528	1964	2006	2673	2456	3436	2796	3914					6 TURNS
2046	2499	1965	2455	2674	3436									7 TURNS
		2456	3000											8 TURNS
														9 TURNS
														10 TURNS

THE NUMBERS IN THE TABLE REPRESENT THE DISTANCE FROM THE CABINET TO THE DETECTOR LOOP IN FEET



VEHICULAR PHASE DESIGNATION DIAGRAM



① CONDUIT @ STOP BAR LOOPS
8' / 7' / 7'
7' / 7' / 6'
PVC 3/4" - T

② CONDUIT @ STOP BAR LOOPS
25' / 25' / 29'
35' / 35' / 36'
PVC 3/4" - T

LOOP:	SIZE:	MODE:	QUADRA-POLE:	DELAY:
A1, A3, A5, A2, A4, A6 B1, B3, B5, B2, B4, B6	6X6	NORMAL	NO	0
A7, B7	6X6	EXTENDED	NO	0

THE FOLLOWING CABLES SHALL BE WIRED TO COMMON AMPLIFIERS:

(A1, A3, A5), (A2, A4, A6),
(B1, B3, B5), (B2, B4, B6),
(A7), (B7)

1 ADDITIONAL TWO CHANNEL DESIGN AMPLIFIER REQUIRED.

REVISIONS	
NAME	DATE

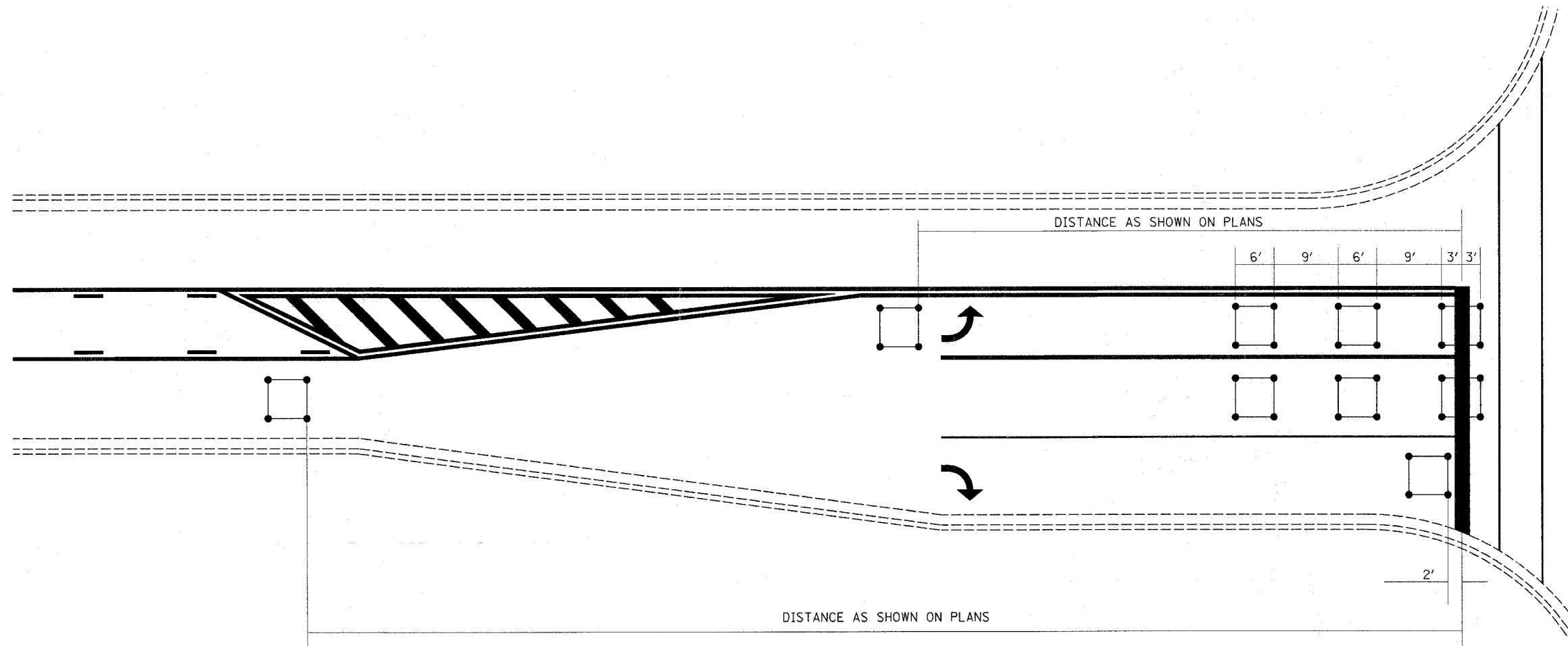
ILLINOIS DEPARTMENT OF TRANSPORTATION
**PAVEMENT MARKING
DETAILS & DETECTOR LOOPS**
**STA 940+50 TO
STA 946+80**
SCALE: VERT. HORIZ.
DATE: DRAWN BY: CHECKED BY:

stef fennk
 3/12/2007
 c:\projects\94911\dvd05403pa.dgn
DET LOOP

FAP NO.	SECTION	COUNTY	TOTAL SHEETS	SHEET NO.
116	123RS-3 122RS-4	RICHLAND	27	27
FED. ROAD DIST. NO. 1		ILLINOIS	FED. AID PROJECT NO.	

CONTRACT NO. 94911

TYPICAL APPLICATION OF DETECTOR LOOPS



NOTES:

1. EACH LOOP SHALL HAVE ITS OWN HOMERUN TO THE GULFBOX/HANDHOLE.
2. LOOPS SHOULD BE CENTERED IN EACH LANE.
3. USE 6' BY 6' LOOPS FOR LANE WIDTHS OF 11' OR GREATER.
4. USE 5' BY 5' LOOPS IF LANE WIDTH IS LESS THAN 11'.

REVISIONS	
NAME	DATE
DRM	12-06

NOT TO SCALE

ILLINOIS DEPARTMENT OF TRANSPORTATION

TYPICAL APPLICATION OF DETECTOR LOOPS

SCALE: VERT.
HORIZ.
DATE

DRAWN BY
CHECKED BY