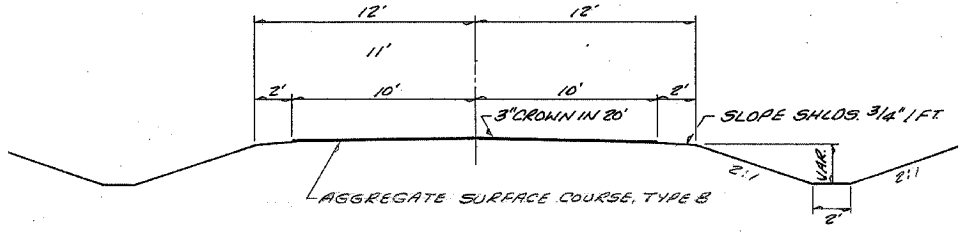


MORRIS WAYNE SHORT,  
MARILYN MAY HILL &  
HAROLD R. SHORT  
PARCEL NO. 1

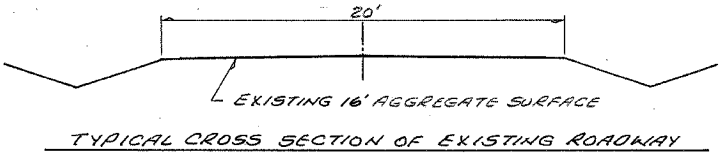
TROY REVALEE  
PARCEL NO. 2

CONTRACT NO. 95495

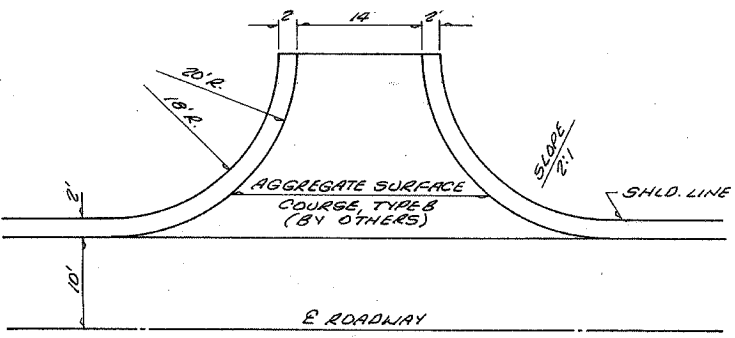
F.A.R. ROUTE NO.	SECTION	COUNTY	TOTAL SHEETS	SHEET
05-02115-00-BR	CRAWFORD 10	2		
STA. 0+00	TO STA. 7+23.30			
FED. ROAD DIST. NO.	ILLINOIS	PROJECT		



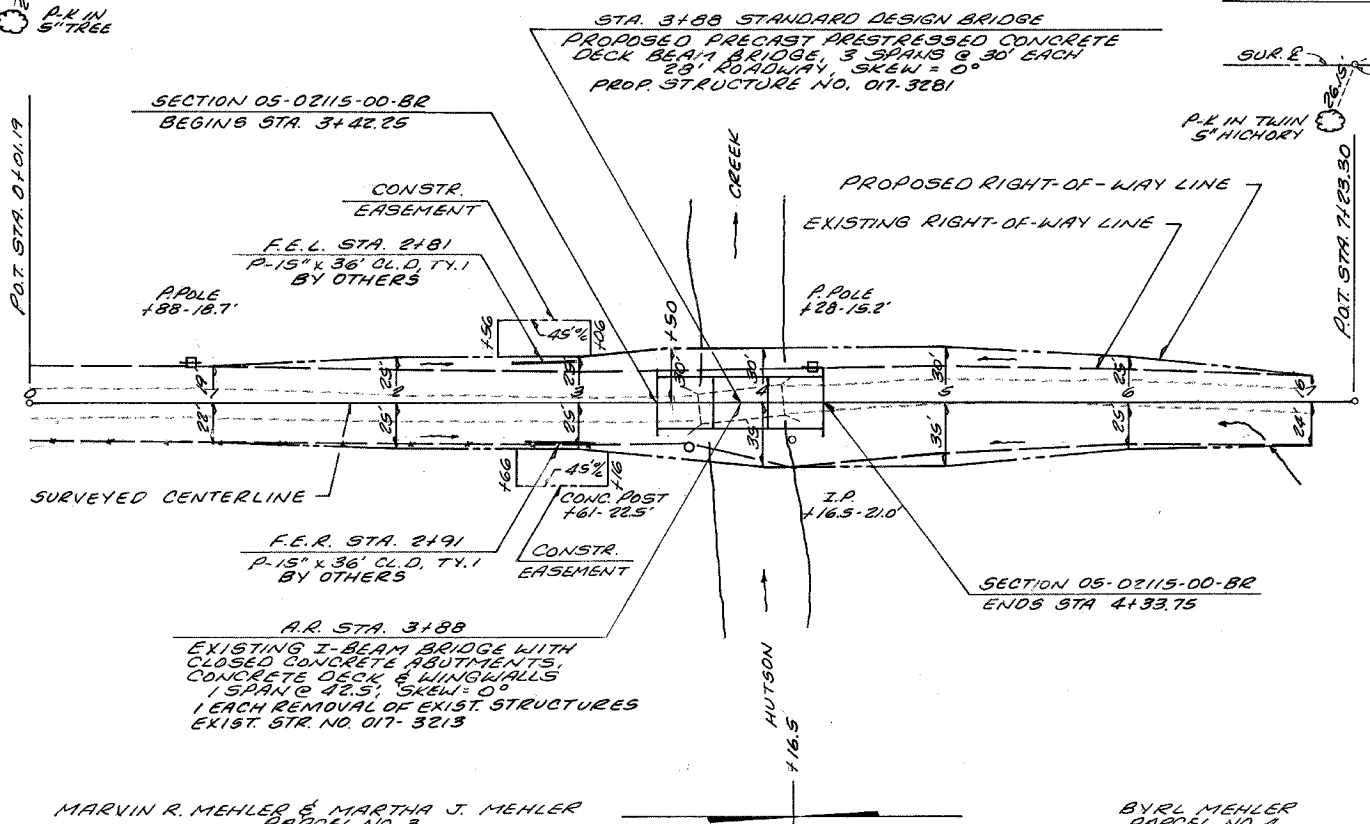
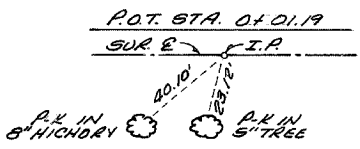
TYPICAL CROSS SECTION OF PROPOSED IMPROVEMENT BY OTHERS



TYPICAL CROSS SECTION OF EXISTING ROADWAY



DETAIL OF FIELD ENTRANCES BY OTHERS



MARVIN R. MEHLER & MARTHA J. MEHLER  
PARCEL NO. 3

BYRL MEHLER  
PARCEL NO. 4

B.M. #1 ELEV. 446.29  
P.I. IN 3" HICKORY  
1.95' LT. STA. 3+15

TREE REMOVAL ACRES (BY OTHERS)  
RT STA. 400-413 = 0.2 ACRES

TREE REMOVAL (OVER 15 UNITS DIA) (BY OTHERS) = 135 UNITS DIA  
CHANNEL EXCAVATION = 276 CU. YD.

UTILITIES  
ELECTRIC: MORRIS ELECTRIC COOP.  
8543 N STATE HWY 130  
NEWTON, IL 62448  
618-783-8765

