

ROUTE	SECTION	COUNTY	TOTAL SHEETS	SHEET NO.
T.R. 349	01-10116-00-BR	WAYNE	13	1
CONTRACT NO. 95497		ILLINOIS	PROJECT NO.	

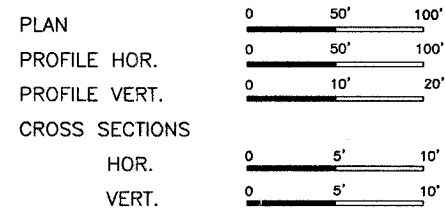
STATE OF ILLINOIS  
DEPARTMENT OF TRANSPORTATION  
DIVISION OF HIGHWAYS  
PLANS FOR PROPOSED  
HIGHWAY BRIDGE PROGRAM  
SECTION 01-10116-00-BR WAYNE COUNTY  
PROJECT BROS-191(53)  
JOB NO. C-97-031-07  
T.R. 349

Joint Utility Locating Information for Excavators  
JULIE 1-800-892-0123

INDEX OF SHEETS

SHEET	ITEM
1	COVER SHEET
2	SUMMARY OF QUANTITIES
3	ROADWAY PLAN AND PROFILE
4	GENERAL PLAN AND ELEVATION
5	STANDARD CS-2427-50L
6	STANDARD CB-2427-36
7	STANDARD CB-2427-48
8	STANDARD CA-2427-20
9	STANDARD CR-TS1
10	STANDARD CN
11	STANDARD CX-1
12-13	CROSS SECTIONS

- STANDARD DRAWINGS
- STANDARD 000001-04
  - STANDARD 280001-03
  - STANDARD 702001-06
  - STANDARD BLR 21-6
  - STANDARD BLR 22-4

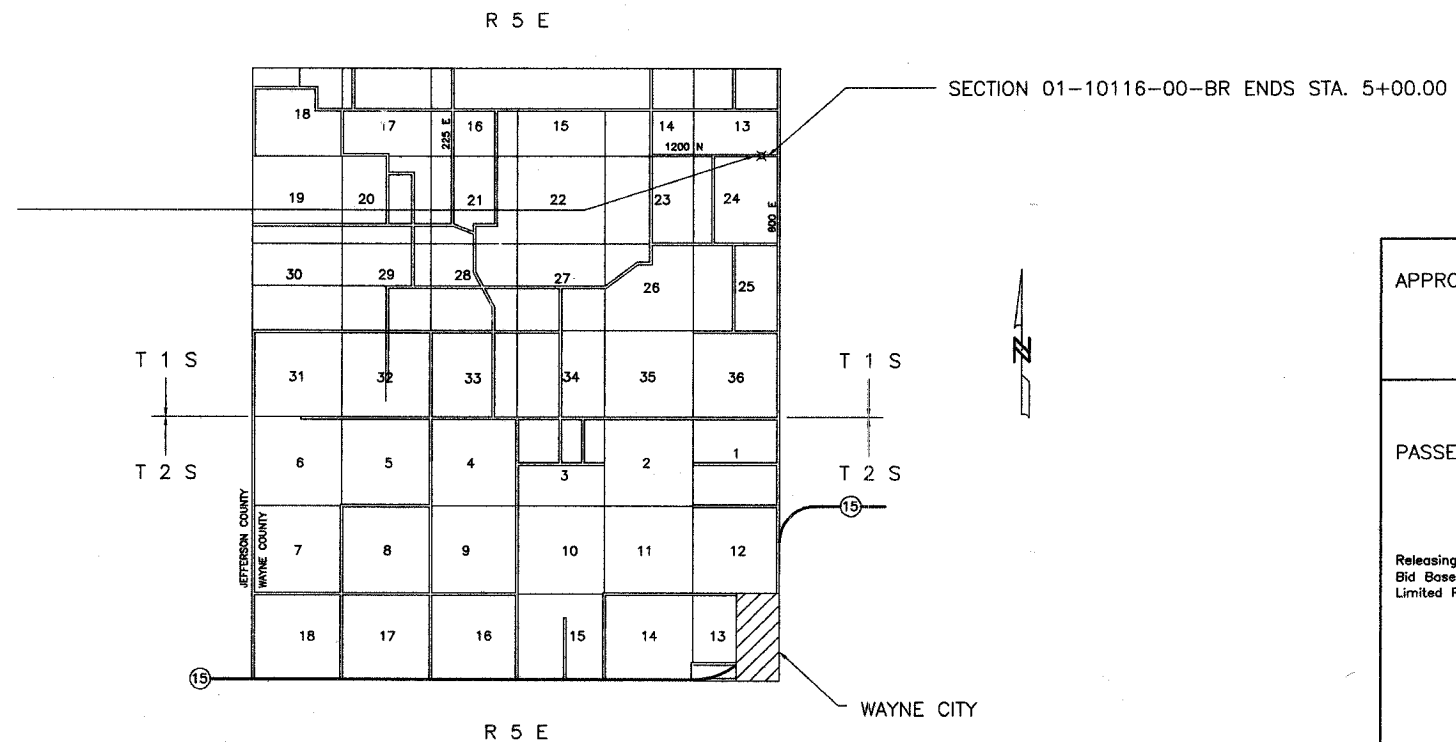


SECTION 01-10116-00-BR BEGINS STA. 0+50.00

SINGLE SPAN PRECAST PRESTRESSED CONCRETE DECK BEAM BRIDGE  
 51'-6" BK. - BK. ABUTMENTS  
 STEEL PILE / SPILLTHROUGH ABUTMENTS  
 24' DECK  
 15' SKEW LT. FORWARD  
 EXISTING STRUCTURE NO. 096-3138  
 PROPOSED STRUCTURE NO. 096-3445

CONTRACT NO. 95497

FUNCTIONAL CLASSIFICATION - LOCAL ROAD  
 ADT = 50



NET LENGTH SECTION 01-10116-00-BR = 450.00 Ft. = 0.085 Mi.

*Arvin A. Charleston*  
 Ill. Reg. Prof. Eng. #29195  
 1/19/07  
 Lic. Expires 11/30/07

CHARLESTON ENGINEERING INC.  
 105 N. KITCHELL  
 P.O. BOX 397  
 OLNEY, ILLINOIS 62450  
 PH. 618-392-0736

REGISTERED PROFESSIONAL ENGINEER OF ILLINOIS

APPROVED January 16, 2007  
*Arthur J. Roebach*  
 COUNTY ENGINEER

PASSED 3/27 2007  
*Manuel E. Castell*  
 DISTRICT SEVEN ENGINEER OF LOCAL ROADS AND STREETS

Releasing For Bid Based on Limited Review 3/27 2007  
*Christina M. Reed*  
 DEPUTY DIRECTOR OF HIGHWAYS REGION FOUR ENGINEER

STATE OF ILLINOIS  
 DEPARTMENT OF TRANSPORTATION