

C.H. RTE. #	SECTION	COUNTY	TOTAL SHEETS	SHEET NO.
7	05-00259-00-BR	SHELBY	19	1
FED. ROAD DIST. NO.		ILLINOIS	FED. AID PROJECT	

# STATE OF ILLINOIS DEPARTMENT OF TRANSPORTATION PLANS FOR PROPOSED BRIDGE REPLACEMENT AND REHABILITATION PROGRAM

### INDEX OF DRAWINGS

- 1 COVER SHEET
- 2 SCHEDULE OF QUANTITIES & SUMMARY OF QUANTITIES
- 3 GENERAL NOTES, TYPICAL SECTIONS AND ENTRANCE DETAILS
- 4-5 SOIL EROSION AND SEDIMENT CONTROL PLAN
- 6 PLAN & PROFILE
- 7-11 STATION CROSS SECTIONS
- 12-19 BRIDGE PLANS

### REQUIRED HIGHWAY STANDARDS

- 000001-04 STANDARD SYMBOLS, ABBREVIATIONS AND PATTERNS
- 280001-03 TEMPORARY EROSION CONTROL SYSTEMS
- 515001-02 NAME PLATE FOR BRIDGES
- 542401 METAL END SECTIONS FOR PIPE CULVERTS
- 630301-04 SHOULDER WIDENING FOR TYPE 1 (SPECIAL) GUARDRAIL TERMINALS
- 631026-03 TRAFFIC BARRIER TERMINAL, TYPE 5
- 635006-02 REFLECTOR AND TERMINAL MARKER PLACEMENT
- 635011-01 REFLECTOR MARKER AND MOUNTING DETAILS
- 666001 RIGHT OF WAY MARKERS
- 702001-06 TRAFFIC CONTROL DEVICES
- BLR 24-1 MAILBOX TURNOUT FOR LOCAL ROADS
- BLR 21-6 TYPICAL APPLICATION OF TRAFFIC CONTROL DEVICES FOR CONSTRUCTION ON RURAL LOCAL HIGHWAYS

## COUNTY HIGHWAY 7 SECTION 05-00259-00-BR PRAIRIE ROAD DISTRICT SHELBY COUNTY STRUCTURE NO 087-3550 PROJECT NO. BROS-173 (148) JOB NO C-97- 032-07

### UTILITY COMPANIES

CONSOLIDATED COMMUNICATION  
MR. GERRY MEYERS  
121 SOUTH 17th  
MATOON, ILLINOIS 61938  
(217) 235-9971

SHELBY ELECTRIC COOPERATIVE  
MR. JIM MATLOCK  
P.O. BOX 560  
SHELBYVILLE, ILLINOIS 62565  
(217) 774-3986

AMEREN CIPS  
MR. CURT FISHER  
911 S. NINTH STREET  
MATTOON, ILLINOIS 61938  
(888) 789-2477

#### EXISTING STRUCTURE NO. 087-3339

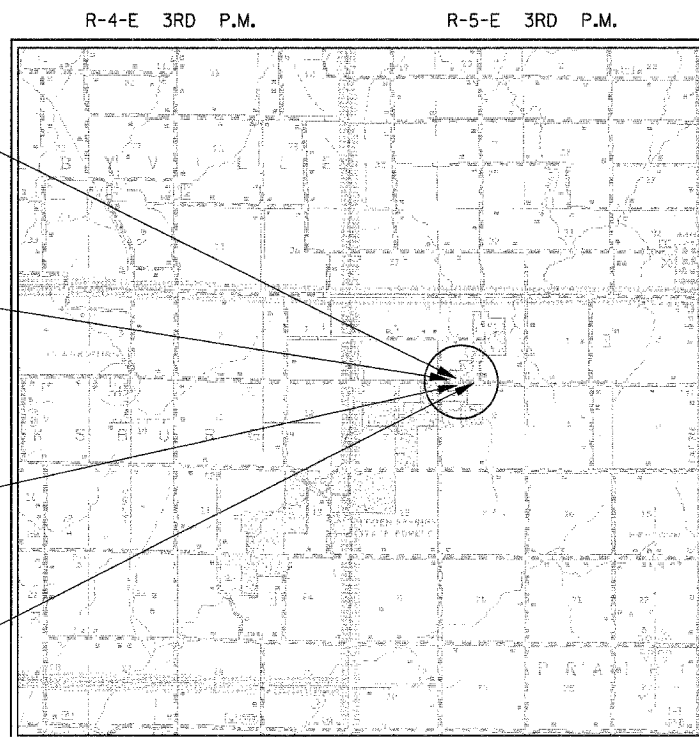
THREE SPAN BRIDGE WITH ASPHALT DECK SUPPORTED BY STEEL I-BEAMS WITH STEEL RAILINGS. TIMBER PIERS, TIMBER ABUTMENT WITH TIMBER WING WALLS ON THE EAST END, AND CONCRETE ABUTMENT ON THE WEST END.  
LENGTH = 138' WIDTH = 19'

PROJECT BEGINS  
STA. 4+50

#### STA. 9+80 - SPECIAL BRIDGE DESIGN

THREE SPAN 27" P.P.C. DECK BEAM BRIDGE  
160' BACK TO BACK ABUTMENTS  
24'-0" CLEAR WIDTH, SKEW = 20° FW RT  
PILE BENT ABUTMENTS AND PIERS  
STRUCTURE NO. 087-3550

PROJECT ENDS  
STA. 14+75

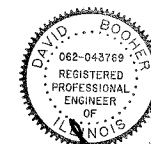


#### LOCATION MAP

0 1 2 MILES

APPROXIMATE SCALE : 1" = 1 MILE  
NET LENGTH OF SECTION = 1025.00 FEET = 0.19 MILES  
FUNCTIONAL CLASSIFICATION : RURAL MINOR COLLECTOR

CURRENT A.D.T. = 275  
DESIGN SPEED 30 MPH



*David Booher*  
David Booher, Illinois P.E. 062-043769 Date 1-30-07  
Expires 11-30-2007

### SCALES

PLAN	1" = 50'	
PROFILE HORIZ.	1" = 50'	
PROFILE VERT.	1" = 5'	
CROSS SECTIONS HORIZ. 1"	1" = 10'	
CROSS SECTIONS VERT. 1"	1" = 5'	

PLANS PREPARED BY:

IE Consultants, Inc.  
6420 South Sixth Street Road  
Springfield, Illinois 62712  
Tel: (217) 529-8027  
Fax: (217) 529-4543  
e-mail: iespringfield@ie-consultants.com

481 W. Boughton Road - Suite 301  
Bolingbrook, Illinois 60440  
Tel: (630) 759-3883  
Fax: (630) 759-4275  
e-mail: iebolingbrook@ie-consultants.com

CONTRACT NO. 95498

CALL **J.U.L.I.E.** (JOINT UTILITY LOCATION INFORMATION FOR EXCAVATORS)  
48 Hours (2 working days) Before You Dig.  
TOLL FREE: 1 (800) 892-0123

APPROVED Feb 02 20 07  
*S. Al...*  
COUNTY ENGINEER, SHELBY COUNTY

PASSED 3/27 20 07  
*Maureen K...*  
DISTRICT SEVEN ENGINEER OF  
LOCAL ROADS & STREETS

Releasing For Bid Based on Limited Review 3/27 20 07  
*Christie M. De...*  
DEPUTY DIRECTOR OF HIGHWAYS,  
REGION FOUR ENGINEER

STATE OF ILLINOIS  
DEPARTMENT OF TRANSPORTATION