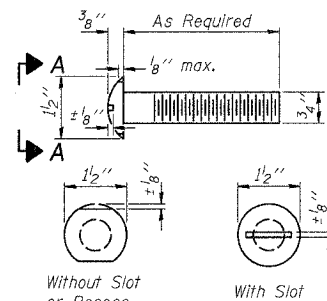
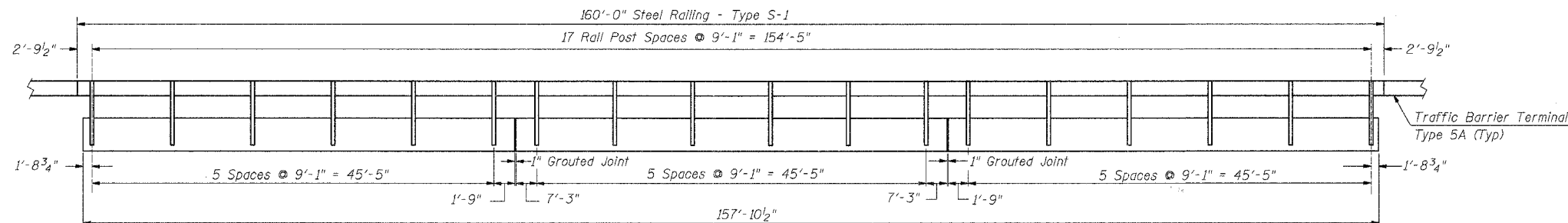


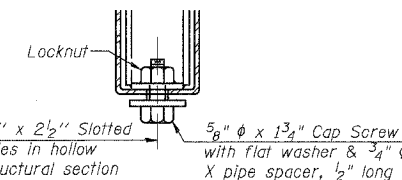
ROUTE NO.	SECTION	COUNTY	TOTAL SHEETS	SHEET NO.
CH 7	05-00259-00-BR	SHELBY	19	15
FED. ROAD DIST. NO.	ILLINOIS PROJECT		SHEET 4 of 8	



VIEW A-A
ROUND HEAD BOLT



OUTSIDE ELEVATION



RAIL SPLICE CONNECTION
AT EXPANSION JT.

CURLED END SECTION DETAILS

(Cost incidental to Type S-1 Rail)

NOTES

Hollow structural sections shall conform to the requirements of ASTM designation A 500 Grade B Structural Steel Tubing and shall meet the longitudinal CVN requirements of 15 ft-lbs at 0° F.

All other steel shapes and plates shall conform to the requirements of AASHTO M 270 Grade 36 except posts and angles shall conform to AASHTO M 270, Grade 50.

Bolts, cap screws, and nuts shall conform to the requirements of ASTM designation A 307 except for high strength bolts, nuts and washers noted which shall conform to AASHTO M 164.

All bolts, nuts, cap screws, washers and lock washers shall be galvanized according to AASHTO M 232.

All posts, railing, rail splices, anchor devices and angles shall be galvanized after shop fabrication according to AASHTO M 111 and ASTM A 385. Galvanized rail shall not be painted.

Railing shall be according to Section 509 of the Standard Specifications, except as noted, and will be paid for at the contract unit price per foot for STEEL RAILING, TYPE S-1.

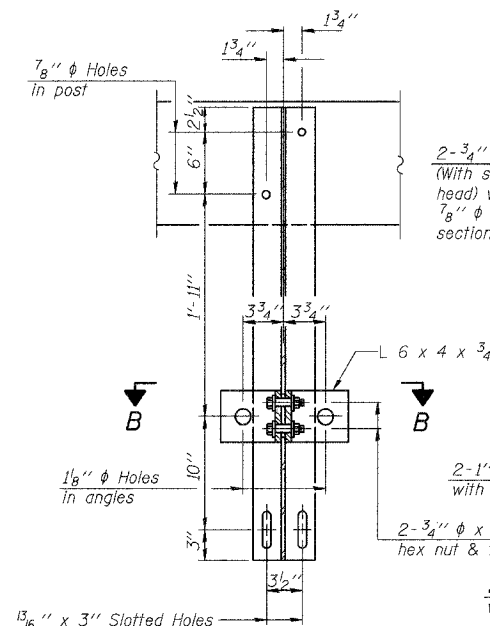
All field drilled holes shall be coated with an approved zinc rich paint before erection.

The lower portion of the post flange in contact with concrete shall receive two coats of asphalt paint conforming to Section 1060.07 Type II or place 1/2" fabric bearing pad between the post and concrete.

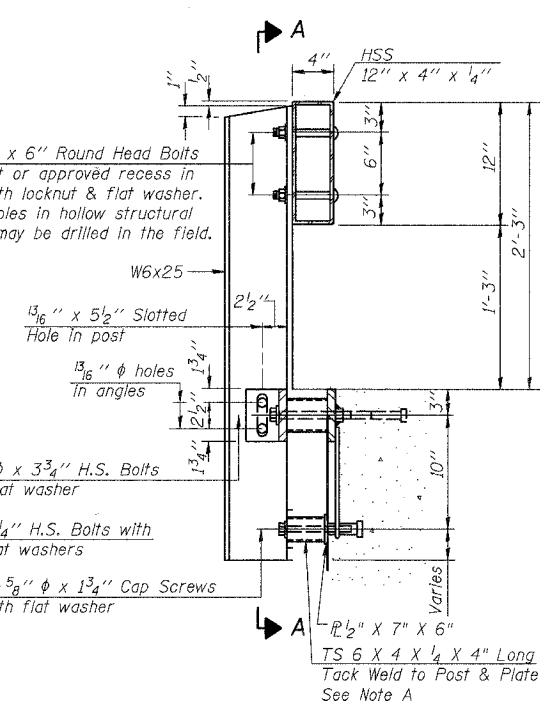
The 3/4" high strength bolts used to connect the 6 x 4 x 3/4 angles to the post shall be tightened according to Article 505.04(f)(2) of the Standard Specifications. The 1" high strength bolts connecting the angles to the concrete shall be tightened to a snug fit and given an additional 1/8 turn. The 5/8" cap screws in bottom of posts shall be tightened to a snug fit only.

For multi-span bridges, sufficient 1/4" x 6" x 1'-2" galvanized steel shims shall be provided to align rail between adjacent spans. Cost included with STEEL RAILING, TYPE S-1.

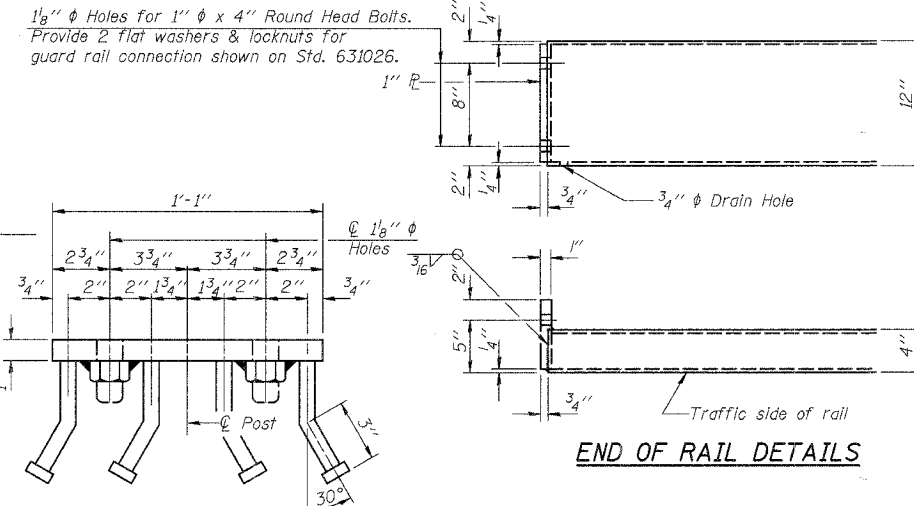
Bolts located at expansion joint shall be provided with locknuts and shall be tightened only to a point that will allow railing movement.



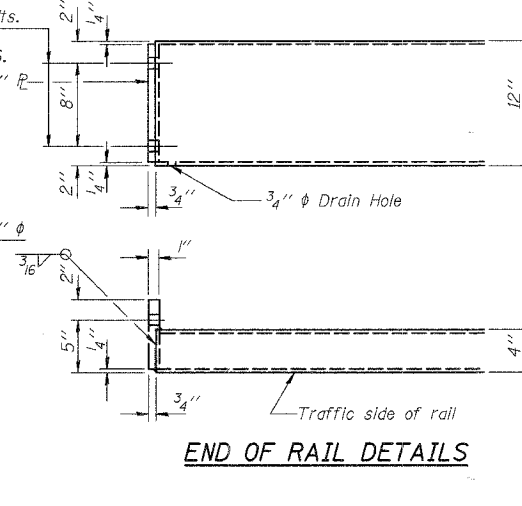
SECTION A-A



SECTION AT RAIL POST



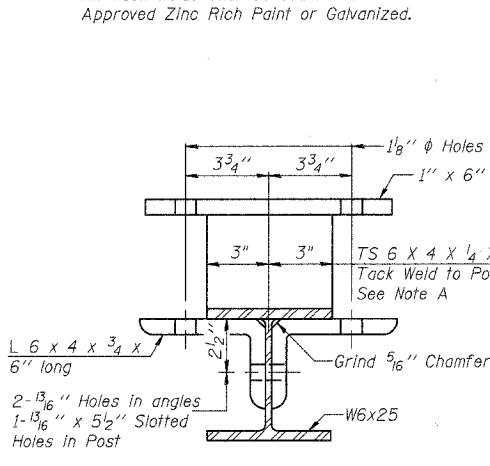
VIEW C-C



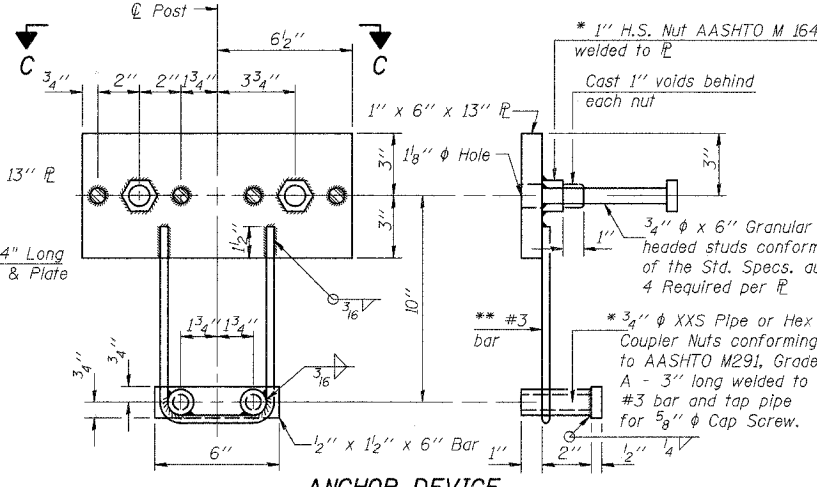
END OF RAIL DETAILS

NOTE A:
All Tack Welds shall be coated with an Approved Zinc Rich Paint or Galvanized.

** Whenever the lower insert assemblies interfere with strand locations, the #3 bars shall be cut and adjusted in order to allow raising or lowering of the lower inserts. Maximum adjustment not to exceed 1/2".

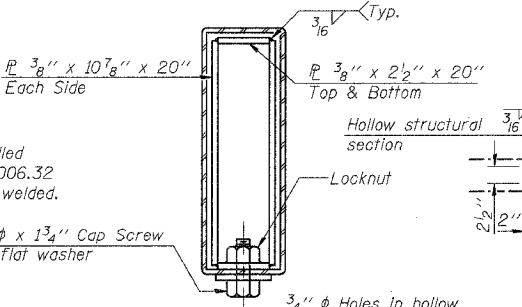


SECTION B-B

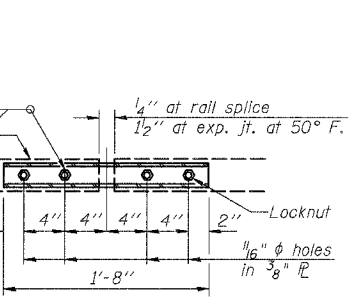


ANCHOR DEVICE

* Threaded areas shall be plugged or blocked off during casting of beam.



SECTIONS AT RAIL SPLICE



PLAN-BOTT. SPLICE TYPICAL

BILL OF MATERIAL

Item	Unit	Quantity
Steel Railing Type S-1	Foot	320

STEEL RAILING TYPE S-1 DETAILS
C.H. 7 OVER RICHLAND CREEK
SEC. 05-00259-00-BR
SHELBY COUNTY
S.N. 087-3550
STA. 9+80

ie consultants
DESIGNED: C.M.V. CHECKED: D.R.B.
DRAWN: T.H.W. DATE: DECEMBER 2006