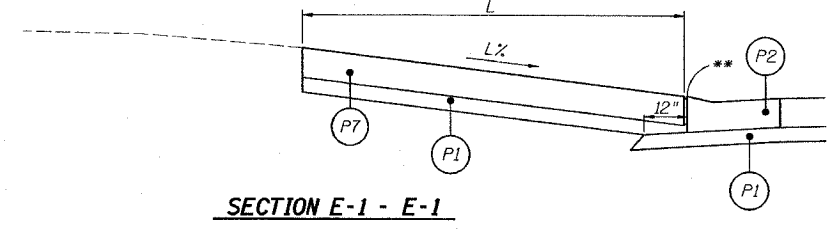
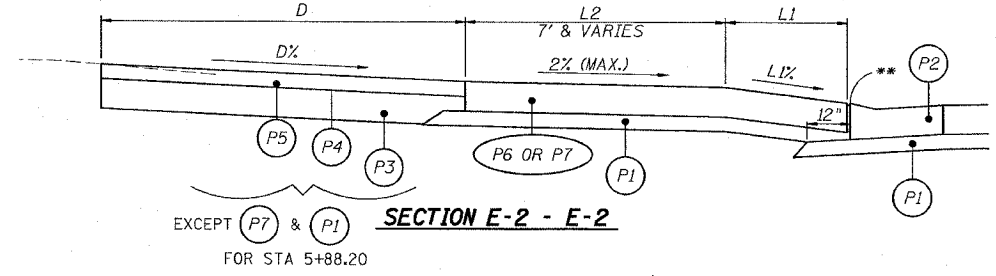
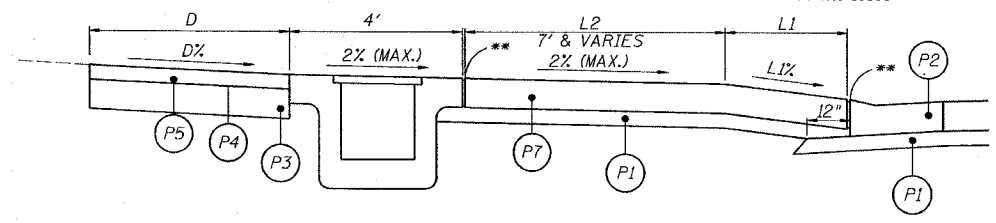
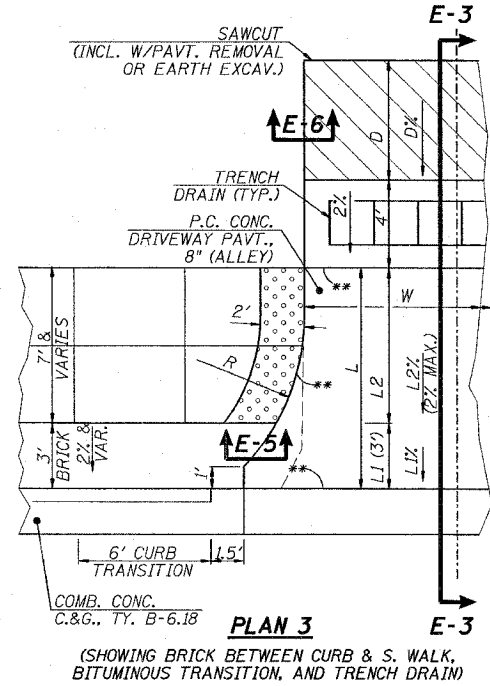
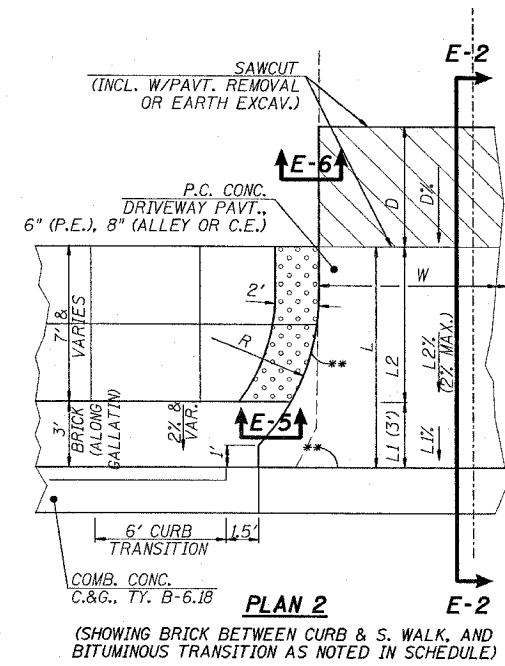
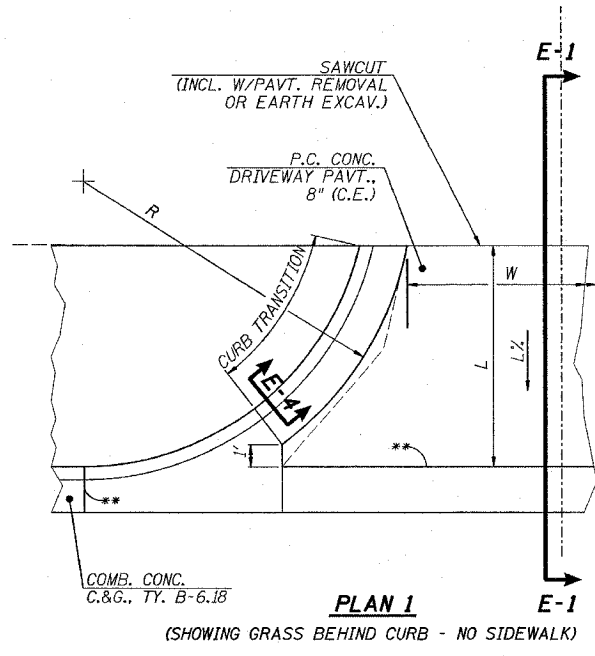
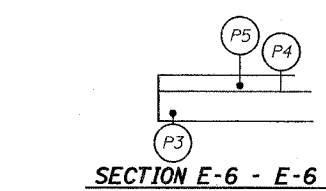
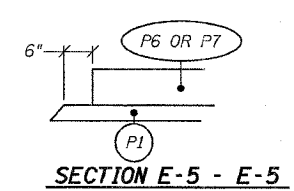
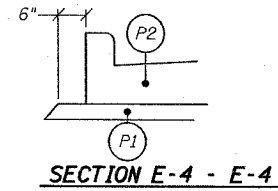


F.A. ILL. RTE.	SECTION	COUNTY	TOTAL SHEETS	SHEET NO.
8419	99-00048-01-PV	FAYETTE	142	25
STA.	TO STA.			
FED. ROAD DIST. NO.	ILLINOIS	FED. AID PROJECT		
CONTRACT NO. 95500				



A.D.A. TRUNCATED DOMES IN P.C.C. SIDEWALK PER APPLICABLE HIGHWAY STANDARD



**SECTION LEGEND**

- (P1) SUBBASE GRANULAR MATERIAL, TYPE A, 4"
  - (P2) COMBINATION CONCRETE CURB AND GUTTER, TYPE B-6.18
  - (P3) AGGREGATE BASE COURSE, TYPE A, 8"
  - (P4) BITUMINOUS MATERIALS (PRIME COAT)
  - (P5) INCIDENTAL HOT-MIX ASPHALT SURFACING, 3
  - (P6) PORTLAND CEMENT CONCRETE DRIVEWAY PAVEMENT, 6" (PRIVATE)
  - (P7) PORTLAND CEMENT CONCRETE DRIVEWAY PAVEMENT, 8" (COMMERCIAL)
- \* INCLUDES PAVEMENT AROUND INLET, IF PRESENT  
 \*\* 1" EXPANSION JOINTS PER STANDARD SPECIFICATIONS

**ENTRANCE SCHEDULE**

LOCATION	TYPE	PLAN	R	L	LX	LI	L1%	L2	L2%	D	D%	W	PORTLAND CEMENT CONCRETE DRIVEWAY PAVEMENT, 6" (SY)	PORTLAND CEMENT CONCRETE DRIVEWAY PAVEMENT, 8" (SY)	PROTECTIVE COAT (SY)	SUB-BASE GRANULAR MATERIAL TYPE A, 4" (SY)	BITUMINOUS MATERIALS (PRIME COAT) (GALLON)	INCIDENTAL HOT-MIX ASPHALT SURFACING (TON)	AGGREGATE BASE COURSE TYPE A, 8" (SY)	DRIVEWAY PAVEMENT REMOVAL (SY)	
<b>GALLATIN STREET</b>																					
RT. STA. 99+39.38	C.E.	1	15	35.60	15.40	-	-	-	-	-	-	29.00	-	121	-	141	-	-	-	122	
LT. STA. 100+74.30	P.E.	2	15	9.20	-	3.00	10.00	6.20	2.00	-	-	12.00	17	-	-	18	-	-	-	18	
RT. STA. 3+85.17	C.E.	2	15	19.00	-	3.00	5.00	16.00	1.50	14.00	10.0	17.00	42	-	-	44	11	6.5	29	41	
LT. STA. 3+59 TO LT. STA. 4+50	LOT	-	-	5.50	-	-	-	-	-	-	-	91.00	-	-	-	-	30	17.6	79	73	
LT. STA. 3+94.03	C.E.	2	15	10.00	-	3.00	8.00	7.00	2.00	-	-	35.00	-	44	-	45	-	-	-	70	
RT. STA. 4+55.33	ALLEY	2	-	16.20	-	3.00	10.00	13.20	2.00	5.50	9.33	12.00	-	32	-	34	4	1.9	9	41	
LT. STA. 4+55.60	ALLEY	2	15	10.00	-	3.00	0.50	7.00	0.50	5.50	0.50	12.00	-	19	-	20	4	1.8	8	29	
LT. STA. 4+60.5 TO LT. STA. 5+64.5	LOT	-	-	5.50	-	-	-	-	-	-	-	104.00	-	53	-	57	-	-	-	159	
LT. STA. 5+50.87	C.E.	2	15	10.00	-	3.00	0.50	7.00	0.50	-	-	35.00	-	44	-	45	-	-	-	64	
RT. STA. 5+88.20	C.E.	2	15	11.00	-	3.00	10.00	8.00	2.00	3.40	7.73	27.00	-	50	-	52	-	-	-	51	
RT. STA. 8+58.33	ALLEY	3	10	10.60	-	3.00	7.15	7.60	2.00	4.00	2.00	15.00	-	26	-	21	3	1.7	8	32	
LT. STA. 8+58.52	ALLEY	2	10	10.60	-	3.00	3.10	7.60	1.00	-	-	14.00	-	18	-	20	-	-	-	17	
LT. STA. 12+16.58	C.E.	2	10	11.60	-	3.00	2.05	8.60	1.00	-	-	24.00	-	33	-	34	-	-	-	29	
LT. STA. 12+56.44	ALLEY	2	10	10.90	-	3.00	0.30	7.90	0.30	-	-	16.00	-	23	-	24	-	-	-	19	
RT. STA. 12+56.76	ALLEY	2	10	11.70	-	3.00	10.00	8.70	2.00	4.00	3.39	16.00	-	23	-	24	3	1.7	8	32	
RT. STA. 16+56.52	ALLEY	2	10	13.80	-	3.00	8.00	10.80	2.00	-	-	16.00	-	26	-	28	-	-	-	20	
<b>SIXTH STREET</b>																					
RT. STA. 603+61.78	C.E.	2	15	6.00	-	0.00	0.00	6.00	1.50	4.00	3.36	32.00	-	24	-	27	-	-	-	-	
RT. STA. 603+45.8 TO RT. STA. 604+01.6	LOT	-	-	4.00	-	-	-	-	-	-	-	60.70	-	-	-	-	12	6.8	30	-	
<b>TOTAL</b>													17	578	595	634	67	38	171	817	

L = L1 + L2  
 LOT = TRANSITION FROM BACK OF SIDEWALK TO PARKING LOT AREA

REVISIONS	
NAME	DATE

ILLINOIS DEPARTMENT OF TRANSPORTATION

**ALLEY & ENTRANCE  
 DETAILS & SCHEDULE**

SCALE: VERT. \_\_\_\_\_  
 HORIZ. \_\_\_\_\_

DATE \_\_\_\_\_

DRAWN BY KOJ  
 CHECKED BY BWC

CADD FILE: 14812/Entr-Dtl.dgn  
 PLOTTED: 01/23/2007

1/11/07 4:02 PM