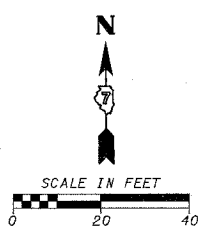
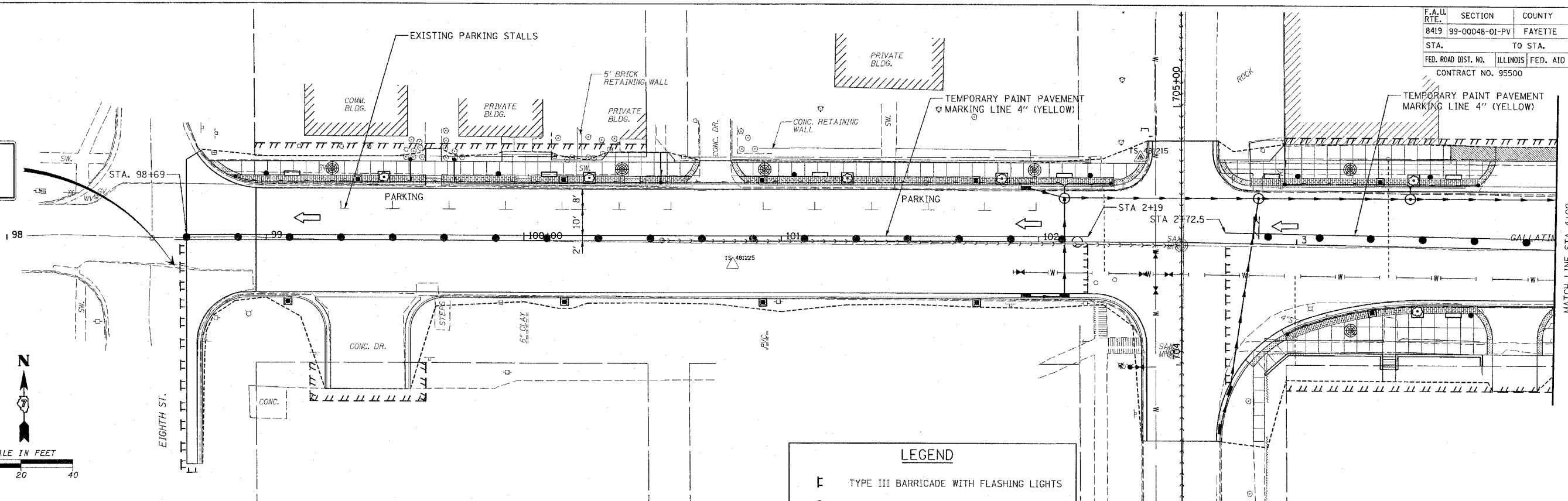


| | | | | |
|---------------------|----------------|---------------------------|--------------|-----------|
| F.A. U. RTE. | SECTION | COUNTY | TOTAL SHEETS | SHEET NO. |
| 8419 | 99-00048-01-PV | FAYETTE | 142 | 41 |
| STA. | | TO STA. | | |
| FED. ROAD DIST. NO. | | ILLINOIS FED. AID PROJECT | | |
| CONTRACT NO. 95500 | | | | |

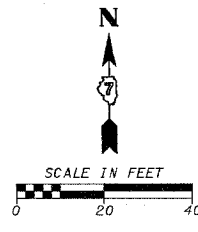
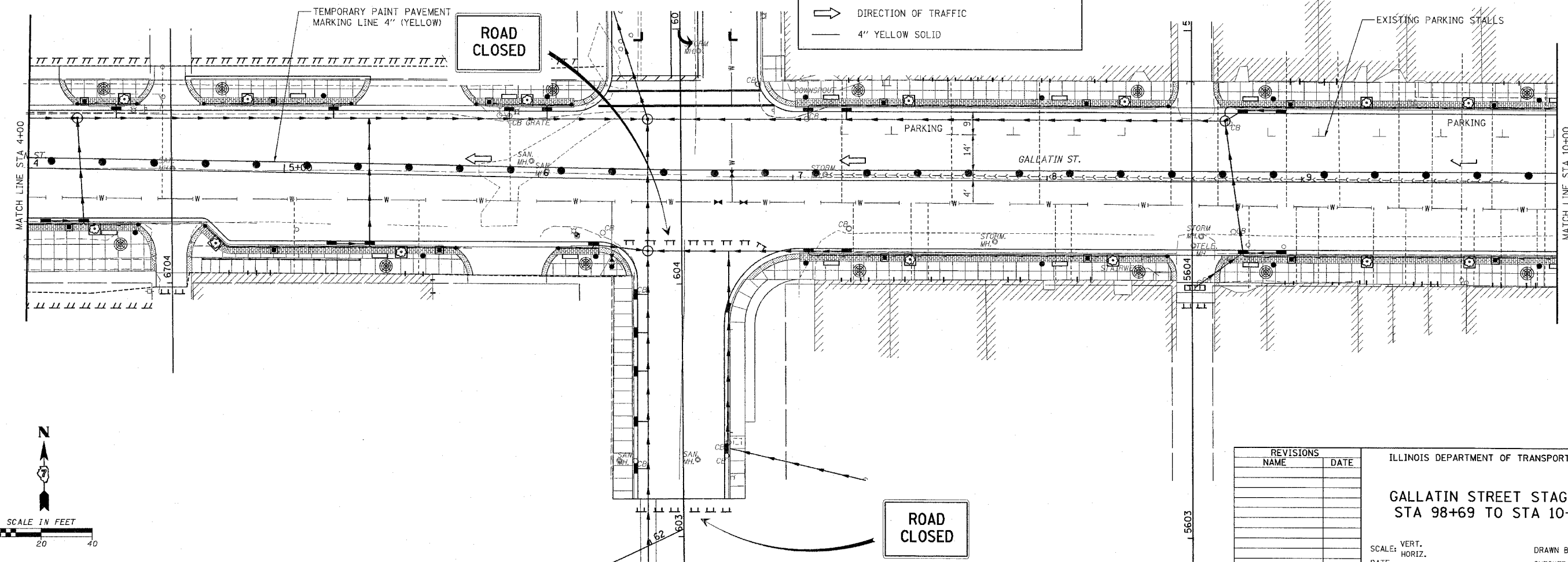
ROAD CLOSED



LEGEND

- ⊥ TYPE III BARRICADE WITH FLASHING LIGHTS
- DRUM WITH STEADY BURNING LIGHTS
- ➔ DIRECTION OF TRAFFIC
- 4" YELLOW SOLID

ROAD CLOSED



ROAD CLOSED

| REVISIONS | |
|-----------|------|
| NAME | DATE |
| | |
| | |
| | |
| | |
| | |
| | |
| | |
| | |
| | |

ILLINOIS DEPARTMENT OF TRANSPORTATION

GALLATIN STREET STAGE II
STA 98+69 TO STA 10+00

SCALE: VERT. _____
HORIZ. _____

DATE _____

DRAWN BY KOJ
CHECKED BY BWC

CADD FILE: /4812/Stage II/Gallatin_01.dgn
PLOTTED: 01/23/2007

H.M. & G. INC. 4812