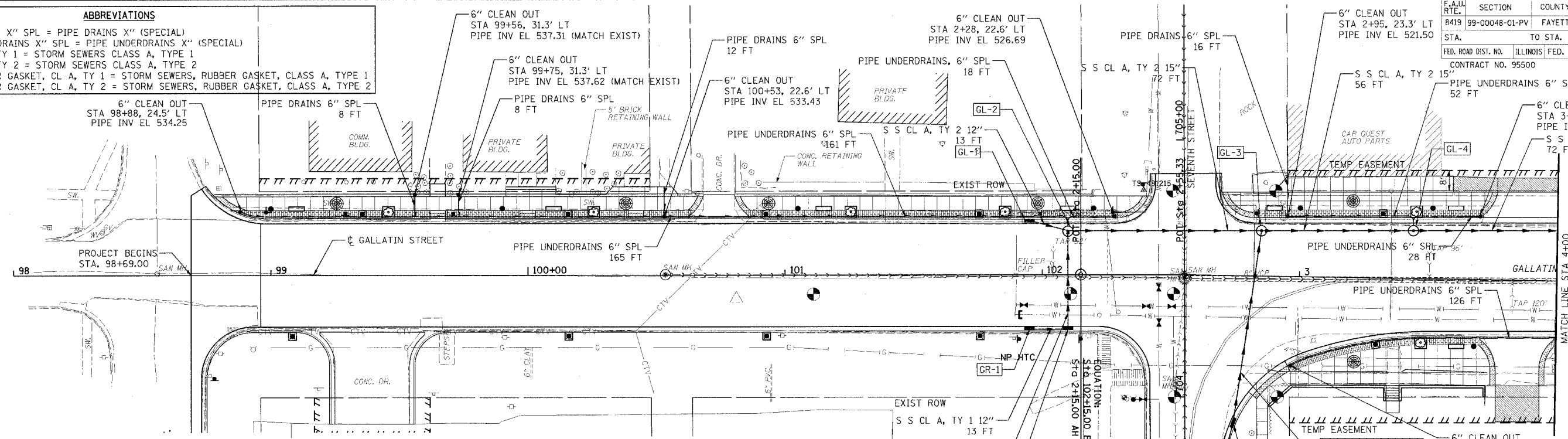
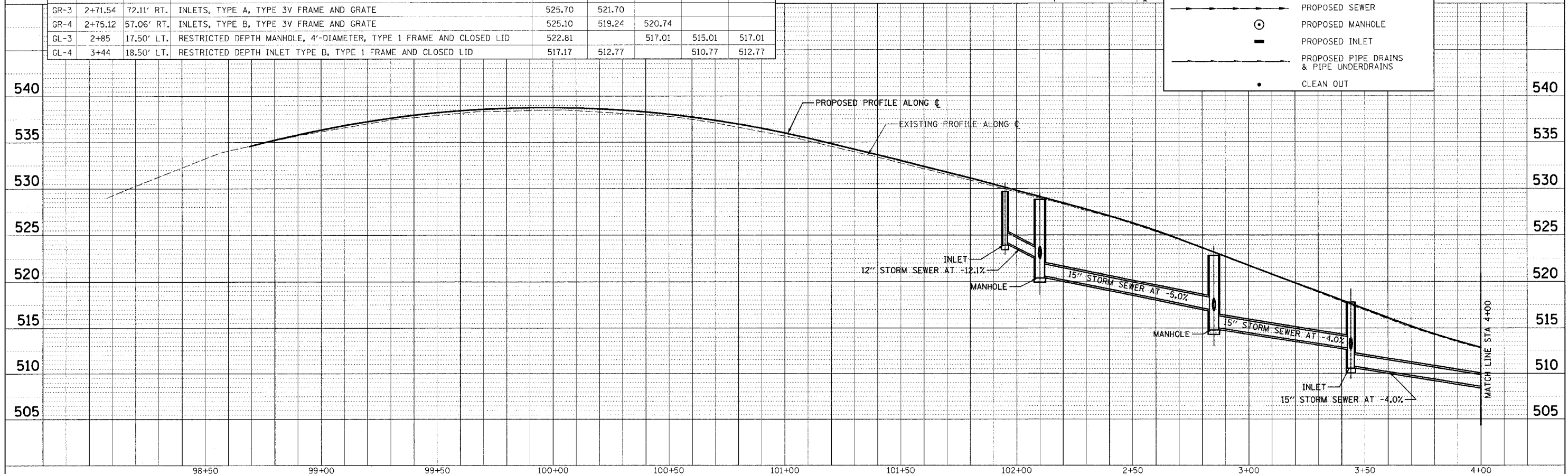
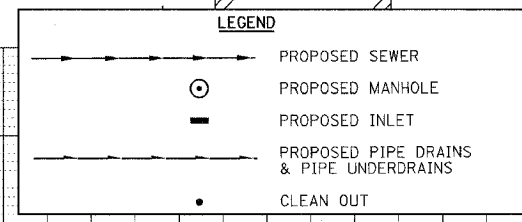


ABBREVIATIONS
 PIPE DRAINS X" SPL = PIPE DRAINS X" (SPECIAL)
 PIPE UNDERDRAINS X" SPL = PIPE UNDERDRAINS X" (SPECIAL)
 S S CL A, TY 1 = STORM SEWERS CLASS A, TYPE 1
 S S CL A, TY 2 = STORM SEWERS CLASS A, TYPE 2
 S S, RUBBER GASKET, CL A, TY 1 = STORM SEWERS, RUBBER GASKET, CLASS A, TYPE 1
 S S, RUBBER GASKET, CL A, TY 2 = STORM SEWERS, RUBBER GASKET, CLASS A, TYPE 2

F.A.U. R.T.E.	SECTION	COUNTY	TOTAL SHEETS	SHEET NO.
8419	99-00048-01-PV	FAYETTE	142	48
STA.	TO STA.			
FED. ROAD DIST. NO.		ILLINOIS FED. AID PROJECT		
CONTRACT NO. 95500		REVISED 4-13-07		



NO.	STATION	OFFSET	DESCRIPTION	LID/GRATE ELEV.	PIPE INVERT ELEV.			
					NORTH	SOUTH	EAST	WEST
GL-1	101+95	21.08' LT.	INLETS, TYPE B, TYPE 3V FRAME AND GRATE	529.68			524.18	
GR-1	101+95	21.08' RT.	INLETS, TYPE A, TYPE 3V FRAME AND GRATE	529.68			526.18	
GL-2	102+10	17.00' LT.	MANHOLES, TYPE A, 4'-DIAMETER, TYPE 1 FRAME, CLOSED LID	528.81	522.61	522.61	520.61	522.61
GR-2	102+10	21.08' RT.	RESTRICTED DEPTH INLET TYPE B, TYPE 3V FRAME AND GRATE	528.66	523.66			525.66
GR-3	2+71.54	72.11' RT.	INLETS, TYPE A, TYPE 3V FRAME AND GRATE	525.70	521.70			
GR-4	2+75.12	57.06' RT.	INLETS, TYPE B, TYPE 3V FRAME AND GRATE	525.10	519.24	520.74		
GL-3	2+85	17.50' LT.	RESTRICTED DEPTH MANHOLE, 4'-DIAMETER, TYPE 1 FRAME AND CLOSED LID	522.81		517.01	515.01	517.01
GL-4	3+44	18.50' LT.	RESTRICTED DEPTH INLET TYPE B, TYPE 1 FRAME AND CLOSED LID	517.17	512.77		510.77	512.77



PLAN
 SURVEYED BY: _____ DATE: _____
 PLOTTED BY: _____ DATE: _____
 CHECKED BY: _____ DATE: _____
 NOTE BOOK NO. _____
 FILE NAME: _____

PROFILE
 SURVEYED BY: _____ DATE: _____
 PLOTTED BY: _____ DATE: _____
 CHECKED BY: _____ DATE: _____
 NOTE BOOK NO. _____
 FILE NAME: _____

CADD FILE: \\4812\ss\cadd\h1\01.dgn
 PLOTTED: 5/9/2007