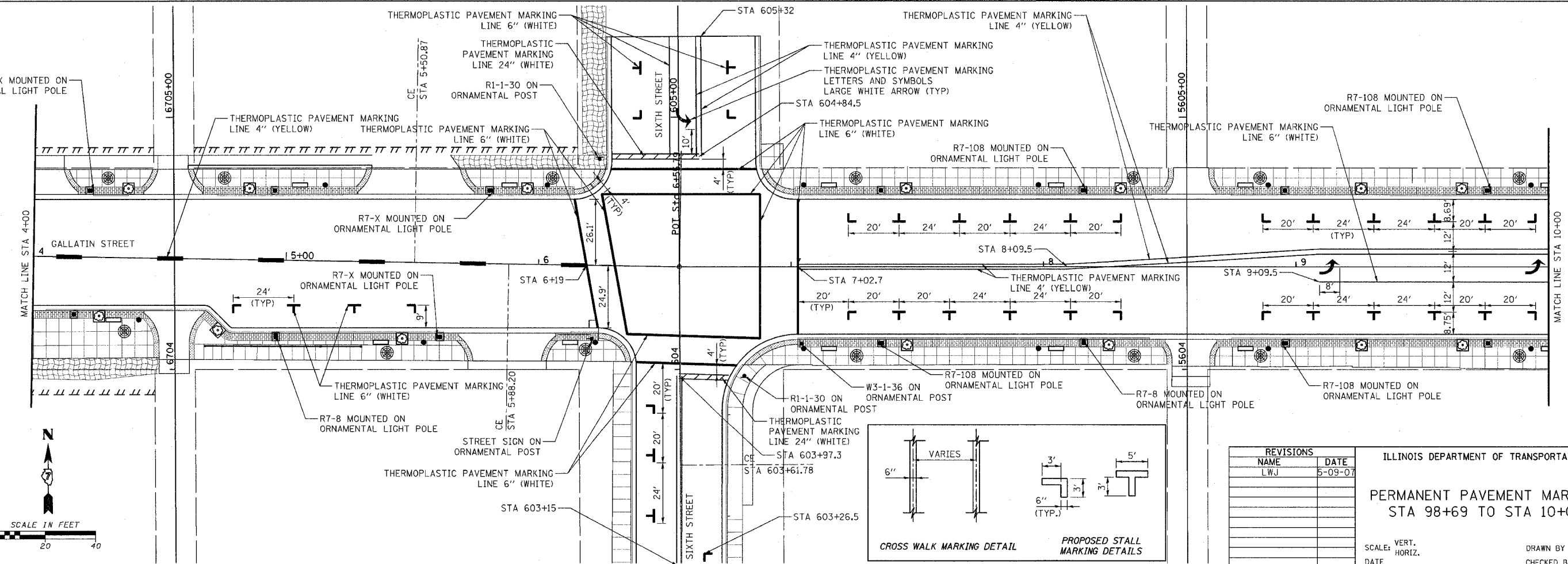
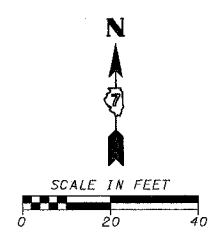
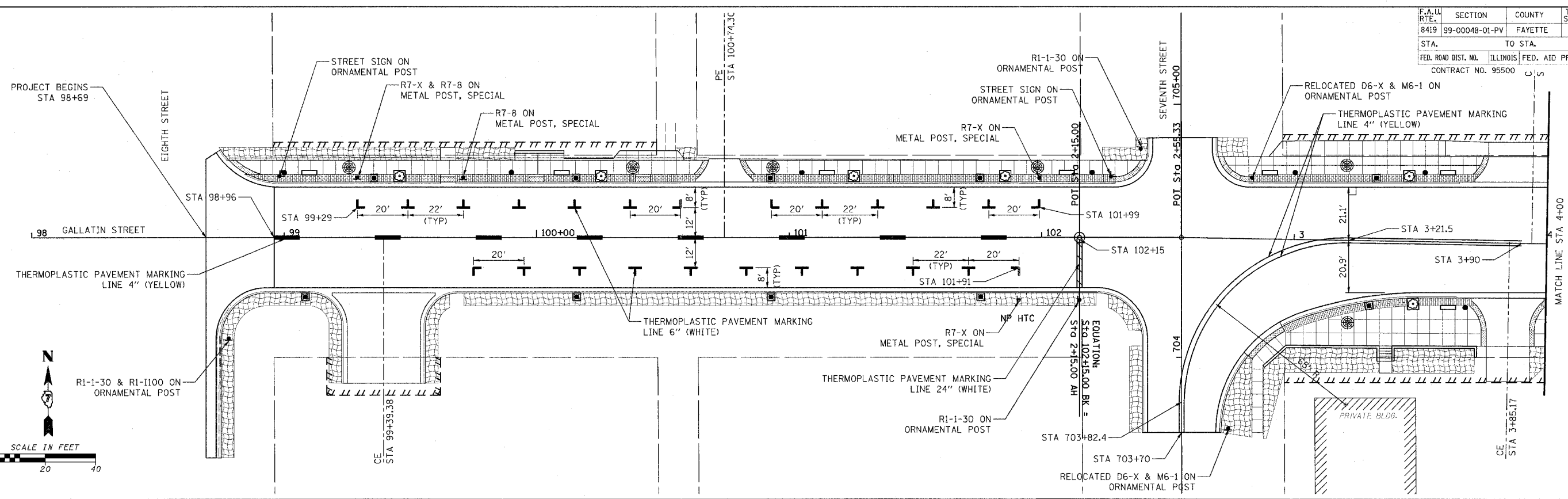
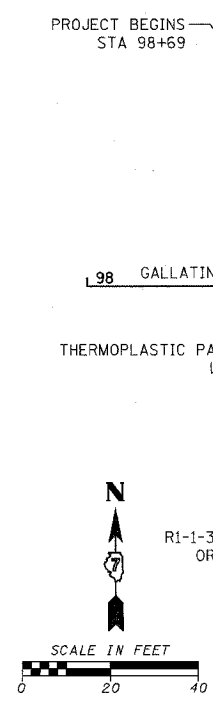


F.A.U. RTE.	SECTION	COUNTY	TOTAL SHEETS	NO.
8419	99-00048-01-PV	FAYETTE	142	92
STA.	TO STA.			
FED. ROAD DIST. NO.	ILLINOIS FED. AID PROJECT			
CONTRACT NO. 95500				



REVISIONS	
NAME	DATE
LWJ	5-09-07

ILLINOIS DEPARTMENT OF TRANSPORTATION
PERMANENT PAVEMENT MARKING
STA 98+69 TO STA 10+00

SCALE: VERT. _____
 HORIZ. _____

DATE _____ DRAWN BY KOJ
 CHECKED BY BWC

CADD FILE: /4812/pv/mk_gallatin.dwg
 PLOTTED: 5/9/2007

H.M. & G. INC. 4812