

# STATE OF ILLINOIS DEPARTMENT OF TRANSPORTATION PLANS FOR PROPOSED FEDERAL AID SECONDARY PROJECT

ROUTE	SECTION	COUNTY	SHEET NO.	TOTAL SHEETS
CH6	00-00107-00-FP	RICHLAND	1	2
FEDERAL ROAD DISTRICT 7		ILLINOIS		

CONTRACT NO. 95502

SHEET NO.	TITLE
1	COVER SHEET
2	SUMMARY OF QUANTITIES

SECTION NO. 00-00107-00-FP  
PROJECT NO. SR-803(210)

C-97-065-02  
F.A.S. ROUTE 803  
RICHLAND COUNTY

**STANDARDS**

000001-04 STANDARD SYMBOLS, ABBREVIATIONS & PATTERNS  
702001-06 TRAFFIC CONTROL  
BLR-22-4 TRAFFIC CONTROL

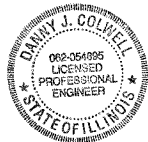
DESIGN CLASS: MAJOR COLLECTOR  
ADT: 300  
DESIGN SPEED = 40 MPH

J.U.L.I.E. 1-800-892-0123

THESE PLANS WERE PREPARED BY ME OR BY A FULL-TIME MEMBER OF MY STAFF WORKING UNDER MY PERSONAL SUPERVISION.

*Danny J. Colwell*

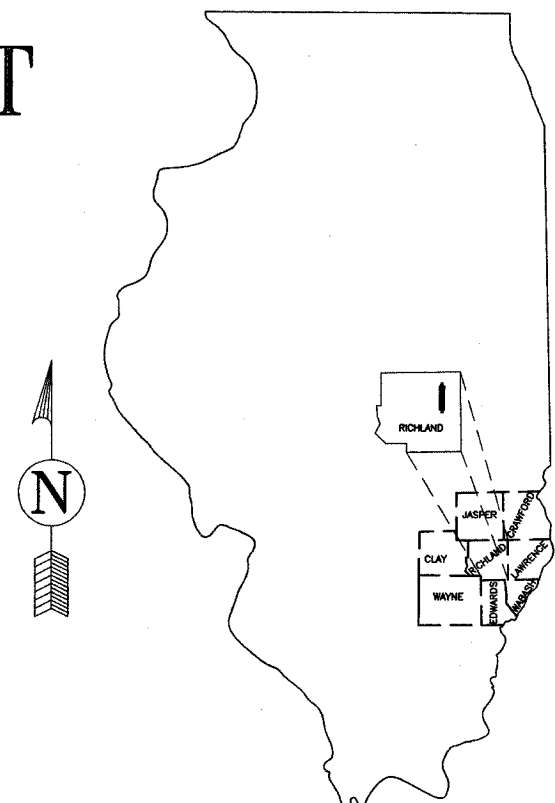
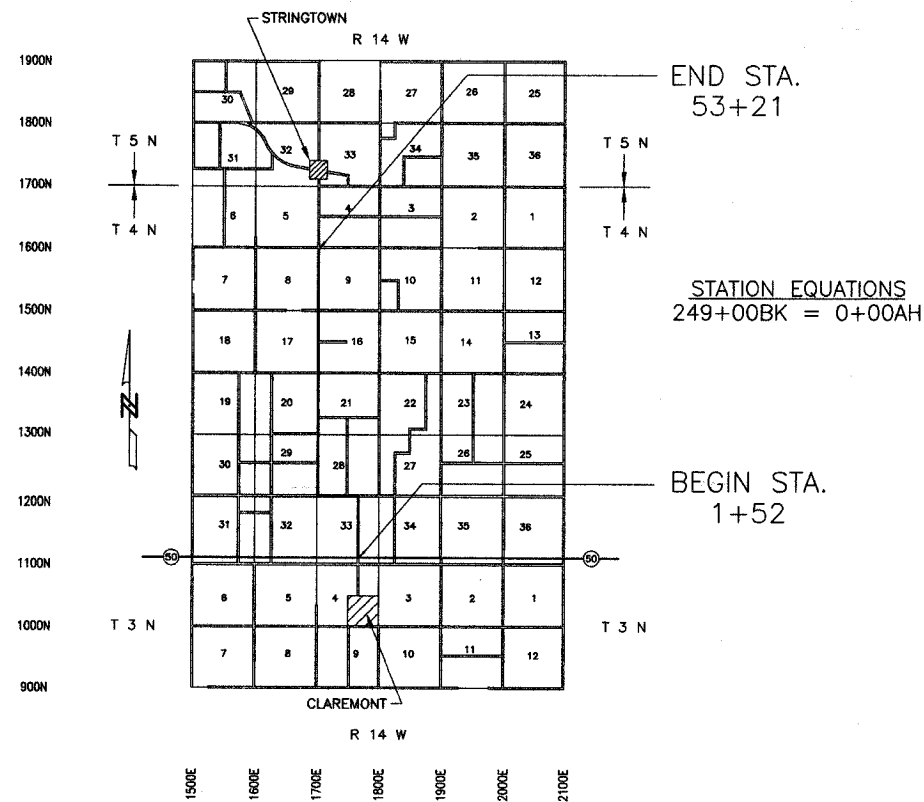
DANNY J. COLWELL  
ILLINOIS LICENSED PROFESSIONAL ENGINEER  
NO. 062-054895



LICENSE EXPIRES 11-30-07

DANNY J. COLWELL  
RICHLAND COUNTY ENGINEER  
4334 N. MERIDIAN ROAD  
OLNEY, ILLINOIS 62450

CONTRACT NO.: 95502

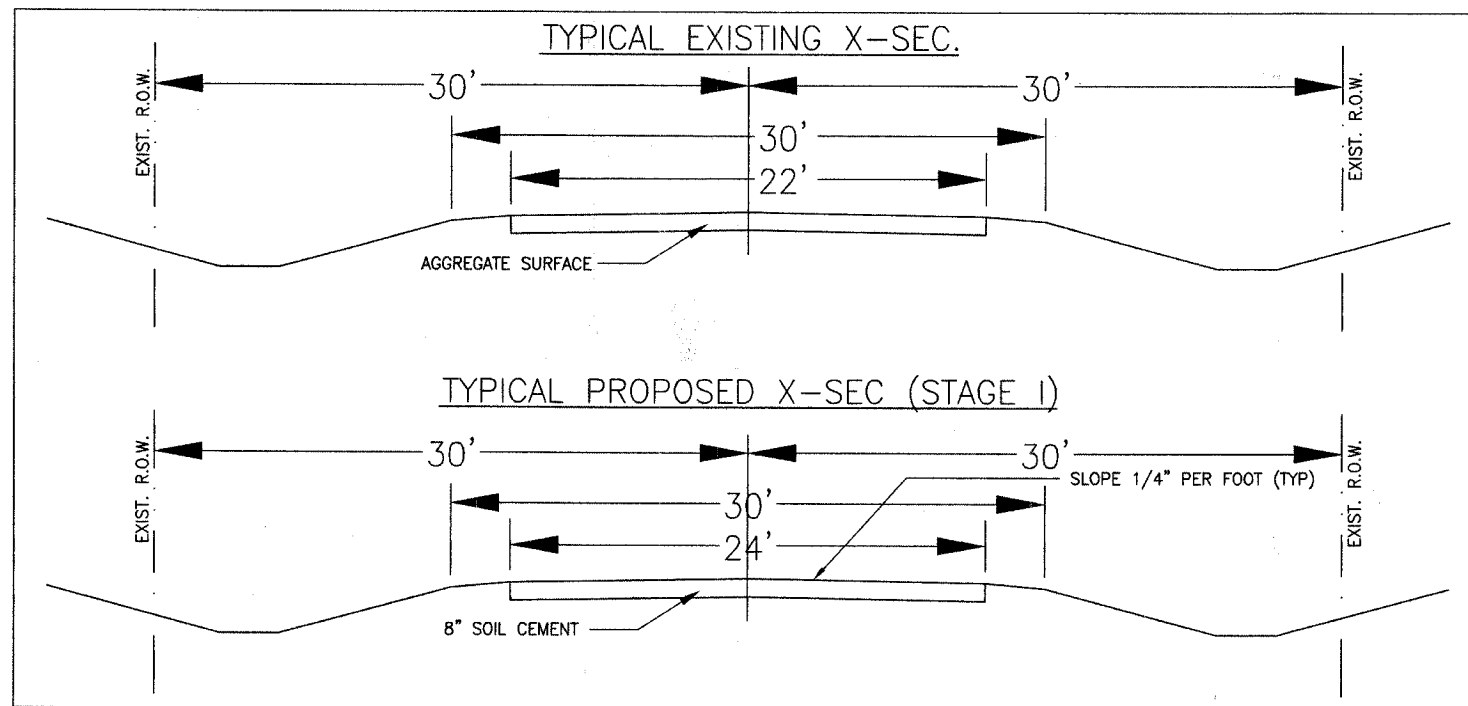


LOCATION OF PROJECT INDICATED THUS:

APPROVED	<i>April 5<sup>th</sup> 2007</i>	20 07
	<i>Danny J. Colwell</i>	COUNTY ENGINEER
PASSED	<i>April 6 2007</i>	
	<i>Maurice E. Coats</i>	DISTRICT SEVEN ENGINEER OF LOCAL ROADS AND STREETS
Releasing For Bid Based on Limited Review	<i>April 6 2007</i>	
	<i>Christy M. Reed</i>	DEPUTY DIRECTOR OF HIGHWAYS REGION FOUR ENGINEER
STATE OF ILLINOIS DEPARTMENT OF TRANSPORTATION		

SECTION 00-00107-00-FP NET LENGTH 30,069.0 FT OR 5.695 MI.

ROUTE	SECTION	COUNTY	SHEET NO.	TOTAL SHEETS
CH6	00-00107-00-FP	RICHLAND	2	2
ILLINOIS		CONTRACT NO. 95502		
SUMMARY OF QUANTITIES				



GENERAL NOTES

S.D.T. 2015 PC=284 SU=44 MU=10 CLASS III ROAD  
 MINIMUM SOIL SUPPORT I.B.R.=3 T.F.=0.070  
 PERCENT OF S.D.T. IN TRAFFIC LANE P=50% S=50% M=50%

PAVEMENT STRUCTURE: STAGE I - 8" SOIL CEMENT BASE COURSE (500 PSI MIN.)  
 WITH A-2 SEAL COAT (BY OTHERS)  
 STAGE II - 3" CLASS I 22' WIDE (FUTURE)

# SUMMARY OF QUANTITIES

CODE #	ITEM	UNITS	QUAN
35200300	PROCESSING SOIL-CEMENT BASE COURSE 8"	SQ YD	81,000
35200500	CEMENT	100 WT	45,690
67100100	MOBILIZATION	L SUM	1