

RTE.	SECTION	COUNTY	TOTAL SHEETS	SHEET NO.
T.R. 140	*	SHELBY	10	1

PROJECT BROS-173(150)

+ 05-09119-00-BR

STATE OF ILLINOIS  
DEPARTMENT OF TRANSPORTATION

PLANS FOR PROPOSED  
HIGHWAY BRIDGE PROGRAM  
PROJECT NO. BROS-173(150)  
T.R. 140 OVER MITCHELL CREEK  
SECTION 05-09119-00-BR  
LAKEWOOD ROAD DISTRICT  
SHELBY COUNTY  
JOB NO. C-97-059-07

INDEX OF SHEETS

- 1 - TITLE SHEET
- 2 - SUMMARY OF QUANTITIES, DETAILS, & TYPICAL SECTIONS
- 3 - PLAN & PROFILE
- 4 - GENERAL PLAN & ELEVATION
- 5 - SUPERSTRUCTURE
- 6 - RAILING
- 7 - ABUTMENTS
- 8 & 9 - CROSS SECTIONS
- 10 - STEEL PILE DETAILS

STANDARDS

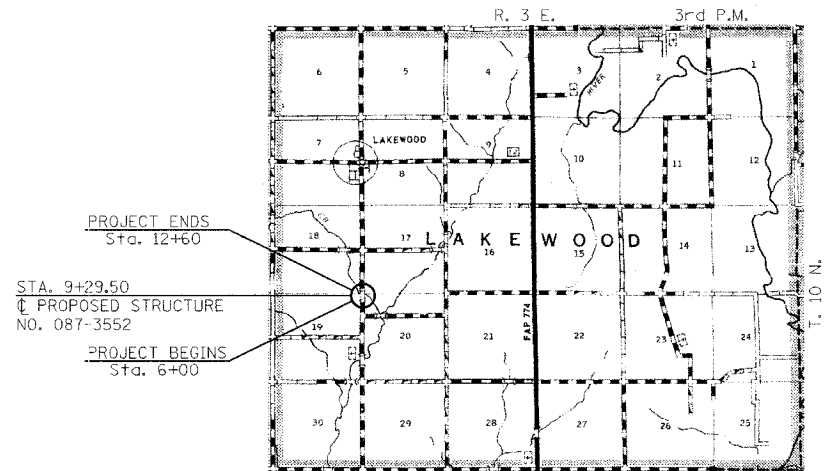
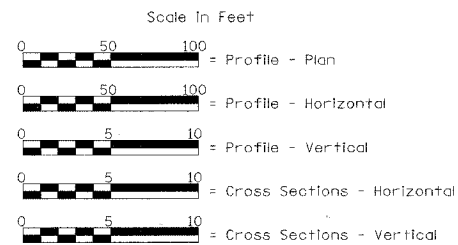
STANDARD	000001-04
STANDARD	280001-03
STANDARD	515001-02
STANDARD	635006-02
STANDARD	702001-06
STANDARD	BLR 21-6

DESCRIPTION

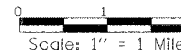
STANDARD SYMBOLS, ABBREVIATIONS AND PATTERNS  
TEMPORARY EROSION CONTROL SYSTEMS  
NAME PLATE FOR BRIDGES  
REFLECTOR AND TERMINAL MARKER PLACEMENT  
TRAFFIC CONTROL DEVICES  
TYPICAL APPLICATION OF TRAFFIC CONTROL DEVICES FOR CONSTRUCTION ON RURAL LOCAL HIGHWAYS

EXISTING STRUCTURE: SINGLE SPAN TIMBER DECK BRIDGE ON STEEL STRINGERS WITH CLOSED TIMBER ABUTMENTS, WINGWALLS ON TIMBER PILES, ±40'-0" BK.-BK. ABUTMENTS, ±21'-0" CLEAR DECK WIDTH, TUBULAR STEEL RAILING. EXISTING STRUCTURE NO. 087-3126

PROPOSED STRUCTURE: SINGLE SPAN PRECAST PRESTRESSED CONCRETE DECK BEAMS (27") ON OPEN CONCRETE ABUTMENTS. 24'-0" OUT.-OUT. DECK, 66'-0" BK.-BK. ABUTMENTS. STEEL RAILING TYPE S1. 10° SKEW LT. FORWARD. PROPOSED STRUCTURE NO. 087-3552



LOCATION PLAN  
Length of Section - 660.00 Feet = 0.125 Miles



Land Section - 17, 18, 19, 20  
Land Quarter Section - S.W., S.E., N.E., N.W.  
Design Class: Local Road (Non-Urban)  
A.D.T. = 109(2004)  
A.D.T. < 150(2027)  
30 M.P.H. Design Speed

FILE NAME: SC1915 (REV. 3/30/07)

TOLL FREE  
"JOINT UTILITY LOCATION INFORMATION FOR EXCAVATORS"  
(CALL I.E.D.) TELEPHONE NUMBER  
1-800-892-9123



Christopher P. Reblum 3/30/07  
EXPIRATION DATE 11/30/07

APPROVED	10/20/07	<i>S. Heindel</i>
		COUNTY ENGINEER
APPROVED	04-27-07	<i>Bill Heindel</i>
		ROAD COMMISSIONER
PASSED	4-12-07	<i>Maureen Kastl</i>
		DISTRICT SEVEN ENGINEER OF LOCAL ROADS & STREETS
Released for Bid Based on Limited Review	4/12/07	<i>Chris McKeel</i>
		DEPUTY DIRECTOR OF HIGHWAYS, REGION FOUR ENGINEER
		STATE OF ILLINOIS DEPARTMENT OF TRANSPORTATION