

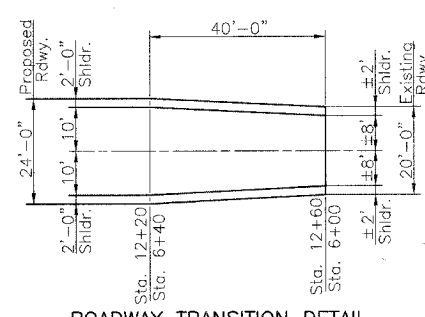
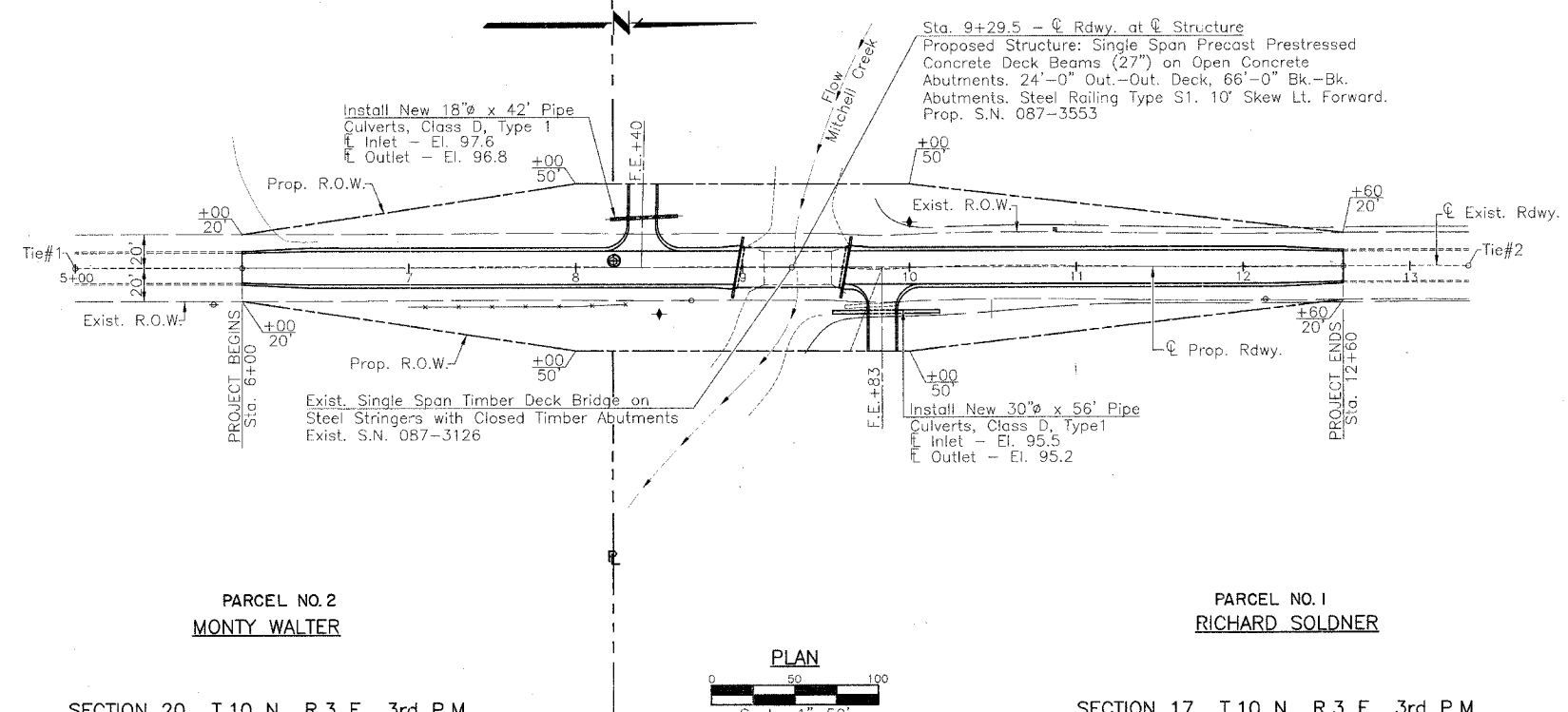
RTE.	SECTION	COUNTY	TOTAL SHEETS	SHEET NO.
T.R.140	*	SHELBY	10	3
PROJECT BROS-173(150)				
* 05-09119-00-BR				

SECTION 19 T.10 N., R.3 E., 3rd P.M.

SECTION 18 T.10 N., R.3 E., 3rd P.M.

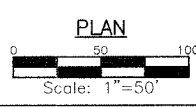
PARCEL NO.3
C.E. McDONALD

PARCEL NO.4
RICHARD SOLDNER



PARCEL NO.2
MONTY WALTER

PARCEL NO.1
RICHARD SOLDNER



SECTION 20 T.10 N., R.3 E., 3rd P.M.

SECTION 17 T.10 N., R.3 E., 3rd P.M.

SCHEDULE TREE REMOVAL (6 TO 15 UNITS DIAMETER)

Location	Quantity (Unit)
Sta. 8+68 19' Rt.	8
Sta. 8+69 20' Rt.	8
Sta. 8+71 20' Rt.	9
Total	25

SCHEDULE DITCH CHECKS

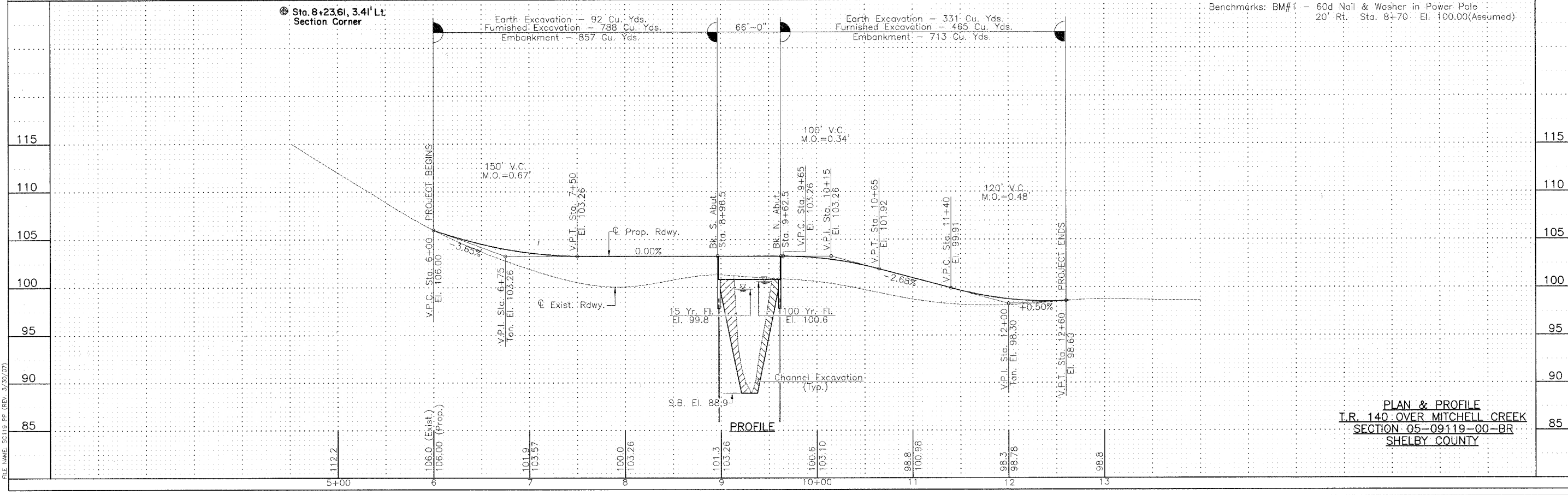
Location	Quantity (Each)
Sta. 8+50 28' Rt.	1
Sta. 10+00 27' Lt.	1
Total	2

SCHEDULE INLET & PIPE PROTECTION

Location	Quantity (Each)
Sta. 8+20 to Sta. 8+62 Lt.	1
Sta. 9+54 to Sta. 10+10 Rt.	1
Total	2

UTILITIES

Shelby Electric Cooperative
 North Route 128
 Shelbyville, Illinois 62565
 Consolidated Communications Inc.
 121 South 17th Street
 Mattoon, Illinois 61938-3915
 217-234-9971



PLAN & PROFILE
 T.R. 140 OVER MITCHELL CREEK
 SECTION 05-09119-00-BR
 SHELBY COUNTY

P.L.E. MAKE 05/18/05 (REV. 3/25/07)