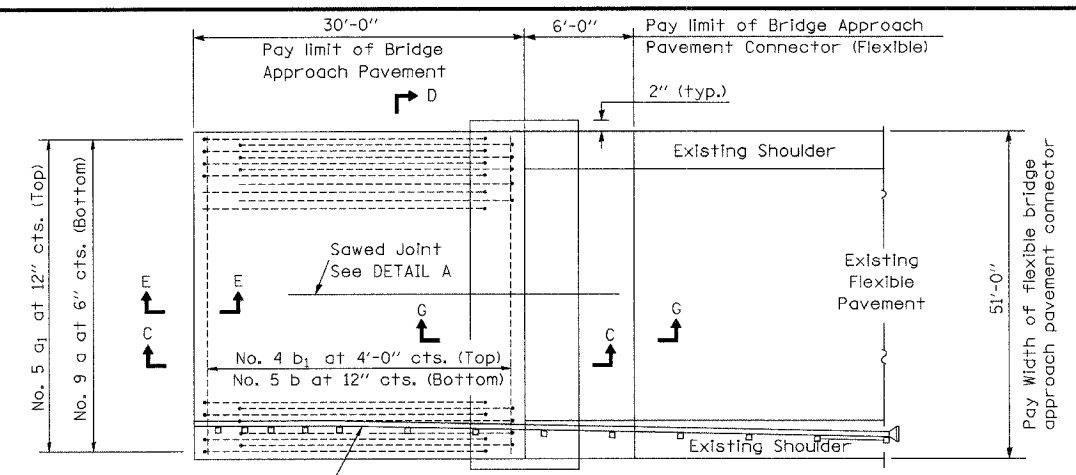


ROUTE NO.	SECTION	COUNTY	TOTAL SHEETS	SHEET NO.
FAU 7359	09-00702-00-BR	MACON	12	12
FED. ROAD DIST. NO.		ILLINOIS PROJECT: BHM-5169(37)		

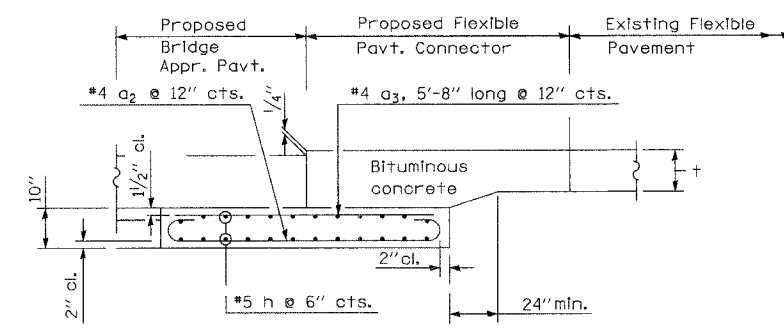
CONTRACT NO. 95512



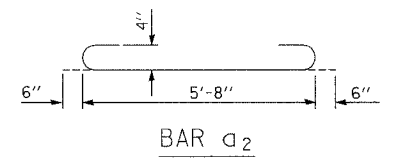
Steel Plate Beam Guardrail - South Side, West Approach Only. See General Notes. Arrange reinforcing to avoid Guardrail Posts.

**BRIDGE APPROACH PAVEMENT CONNECTOR**

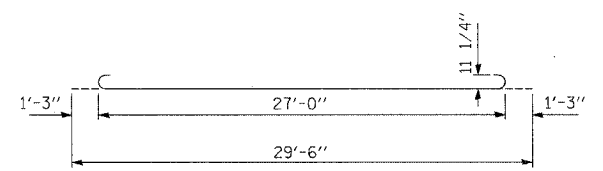
\* Saw  $\perp$  or lane edge if poured two or more lane widths at a time



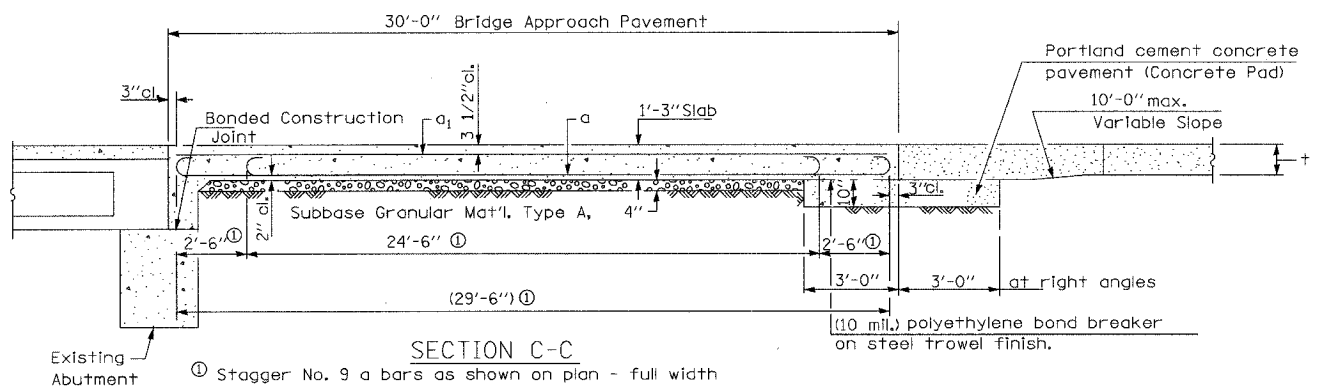
SECTION G-G (Showing reinforcement)



BAR a2

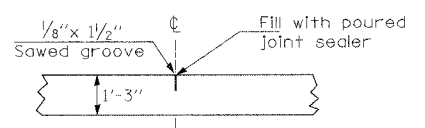


BAR a



SECTION C-C

ⓐ Stagger No. 9 a bars as shown on plan - full width



DETAIL A (Reinforcement Not Shown)

GENERAL NOTES

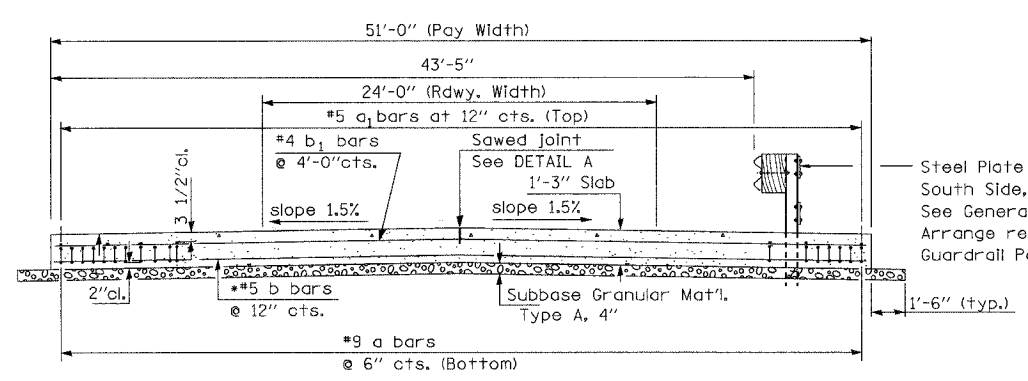
THICKNESS-"t"=Thickness of Pavement.  
See Standard 420001 for joint details not shown.  
See Sheets 2 and 3 of 12, Standards 630001-07, 630301-04 and B.L.R. 20-4 for guardrail details.  
All items necessary to construct Bridge Approach Pavement and Bridge Approach Pavement Connector (Flexible) shall be paid for according to IDOT Standard Specification Art. 420.19.

DESIGN STRESSES

$f_y = (60,000 \text{ p.s.i.})$   
 $f'_c = (3,500 \text{ p.s.i.})$   
 $n = 8.5$

BILL OF MATERIAL

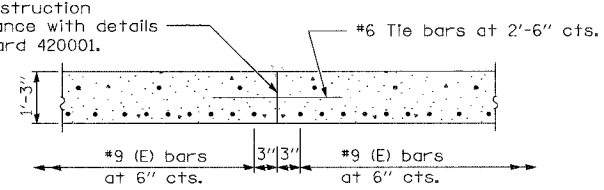
Item	Unit	Quantity
Bridge Approach Pavement	Sq. Yds.	340
Bridge Approach Pavement Connector (Flexible)	Sq. Yds.	68
Protective Coat	Sq. Yds.	340



SECTION D-D

(See Plan for Dimensions not shown) All reinforcement bars shall be epoxy coated.

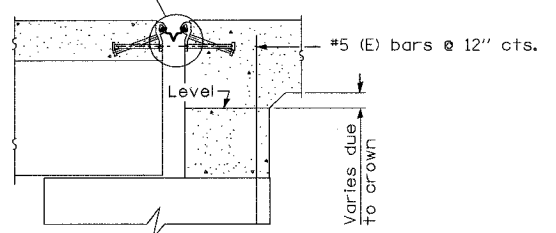
Longitudinal Construction Joint in accordance with details shown on Standard 420001.



OPTIONAL LONGITUDINAL CONSTRUCTION JOINT

As approved by the Engineer, the Contractor may elect to reduce the widths of pour by use of the Optional Longitudinal Construction Joint shown. Joints shall be located at the edge of a traffic lane.

Strip Seal Expansion Joint Assembly (See Sheet 8 of 12)



SECTION E-E

APPROACH PAVEMENT DETAILS		
Date	Designed DCS	FAU 7359 (MOUND ROAD) OVER STEVENS CREEK CITY OF DECATUR STA. 15+00.00 STR. NO. 058-3062
Revisions	Drawn DCS	
	Checked TDN	
	Approved KWB	
Prepared by:	URS	
345 East Ash Avenue Decatur, IL 62526		URS Job No. 36431697