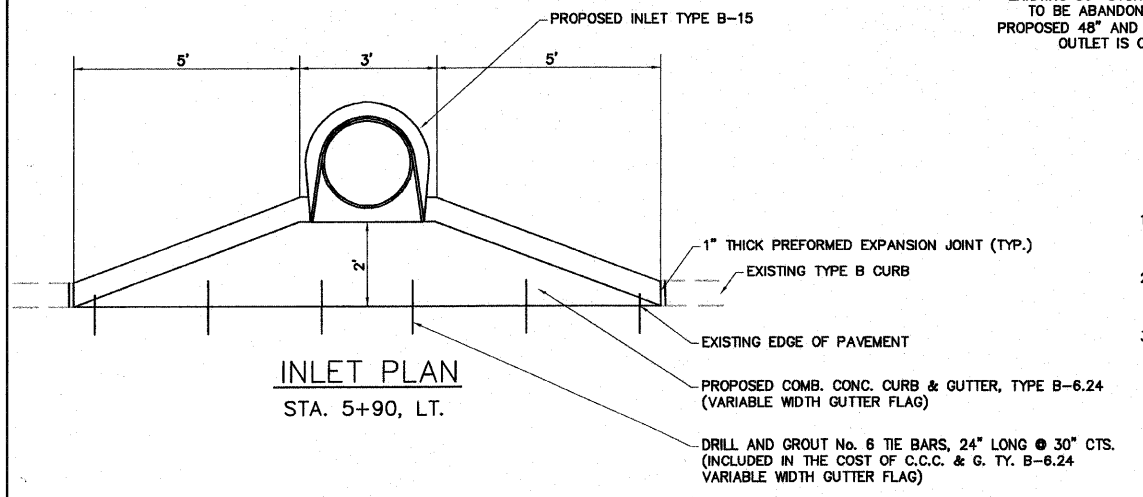
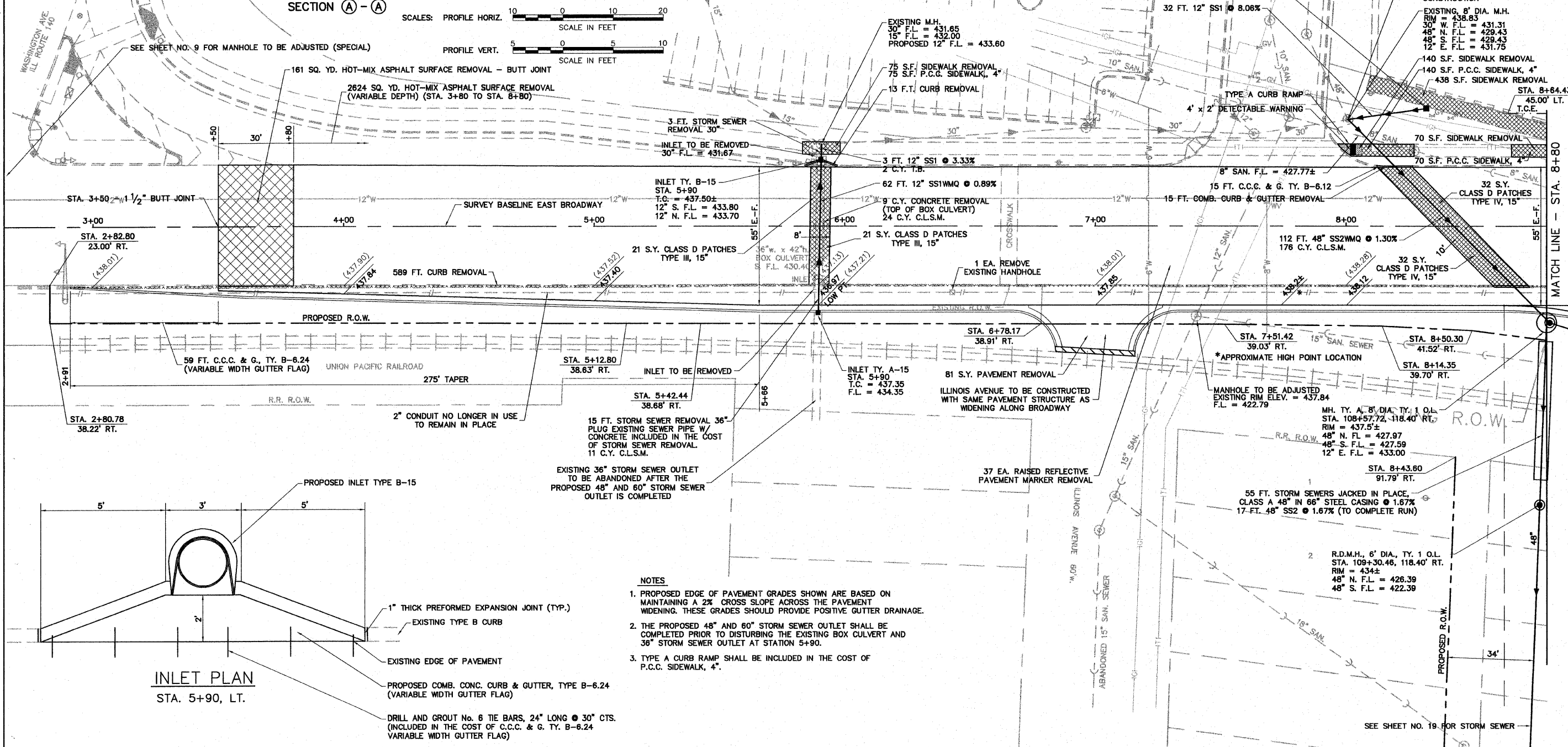


SECTION A - A  
 SCALES: PROFILE HORIZ. 1" = 10' SCALE IN FEET  
 PROFILE VERT. 1" = 5' SCALE IN FEET



- NOTES
1. PROPOSED EDGE OF PAVEMENT GRADES SHOWN ARE BASED ON MAINTAINING A 2% CROSS SLOPE ACROSS THE PAVEMENT WIDENING. THESE GRADES SHOULD PROVIDE POSITIVE GUTTER DRAINAGE.
  2. THE PROPOSED 48" AND 60" STORM SEWER OUTLET SHALL BE COMPLETED PRIOR TO DISTURBING THE EXISTING BOX CULVERT AND 36" STORM SEWER OUTLET AT STATION 5+90.
  3. TYPE A CURB RAMP SHALL BE INCLUDED IN THE COST OF P.C.C. SIDEWALK, 4".

CITY OF ALTON LAW ENFORCEMENT CENTER  
 RESIDENTIAL LAND USE  
 SCALE IN FEET: 0 20 40  
 N

CONTRACTOR SHALL SAW CUT A HOLE IN THE EXISTING MANHOLE AS REQUIRED FOR THE PROPOSED 12" AND 48" STORM SEWERS. PROVIDE A CONCRETE COLLAR AND CONCRETE WASH AS PER SPECIAL PROVISIONS FOR INLETS AND MANHOLES. THIS WORK SHALL BE INCLUDED IN THE COST OF THE STORM SEWER CONSTRUCTION.

REVISIONS

**SMS ENGINEERS**  
 Sheppard Morgan & Schwaab, Inc.  
 CONSULTING ENGINEERS & LAND SURVEYORS  
 215 Market Street  
 Alton, Illinois 62002  
 618/462-9725

CITY OF ALTON, ILLINOIS  
 SECTION 06 - 00208 - 02 - RP  
 CPL. CHRIS BELCHIK MEMORIAL EXPRESSWAY  
 PLAN EAST BROADWAY

DWG. NO. PH II PLAN EAST BROADWAY 1.DWG  
 REF. BK. INDIANA AVE.  
 JOB NO. 406365.1  
 DSN. BY: DEG  
 DWN. BY: CAD  
 CHK. BY: DEG  
 DATE: OCTOBER, 2006  
 SCALE: 1" = 20'  
 SHEET 16 OF 61