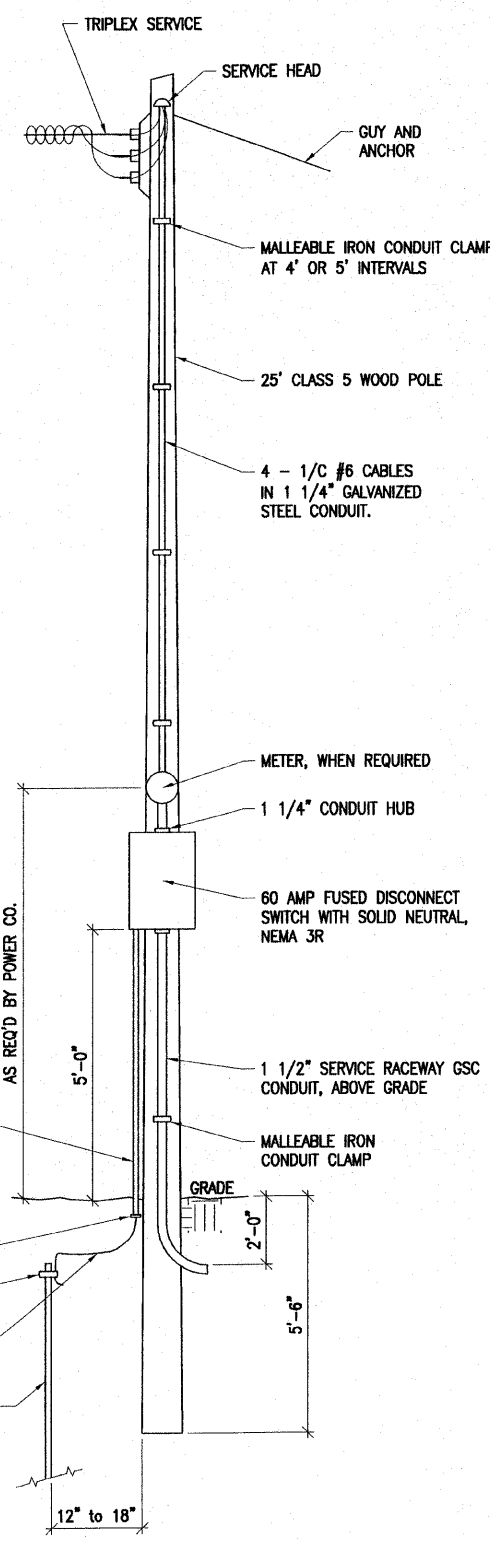
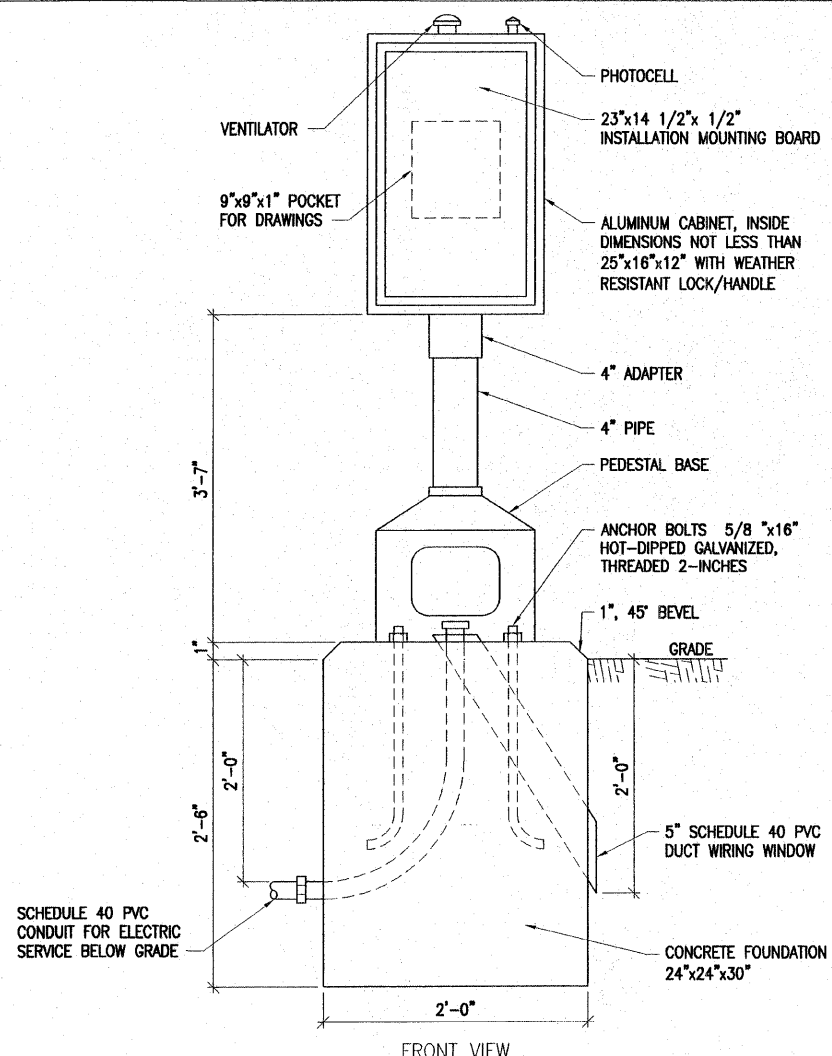


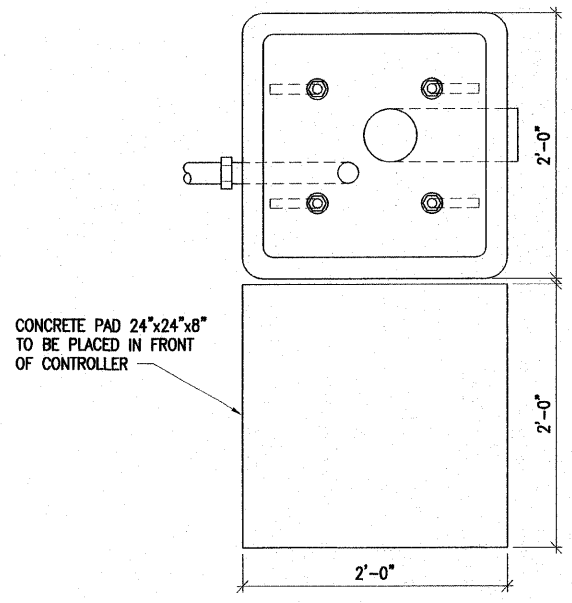
ROUTE NO.	SECTION	COUNTY	TOTAL SHEETS	SHEET NO.
FAU-8988	08-00208-02-BR	MADISON	61	40
FED. ROAD DIST. NO.	PROJECT			



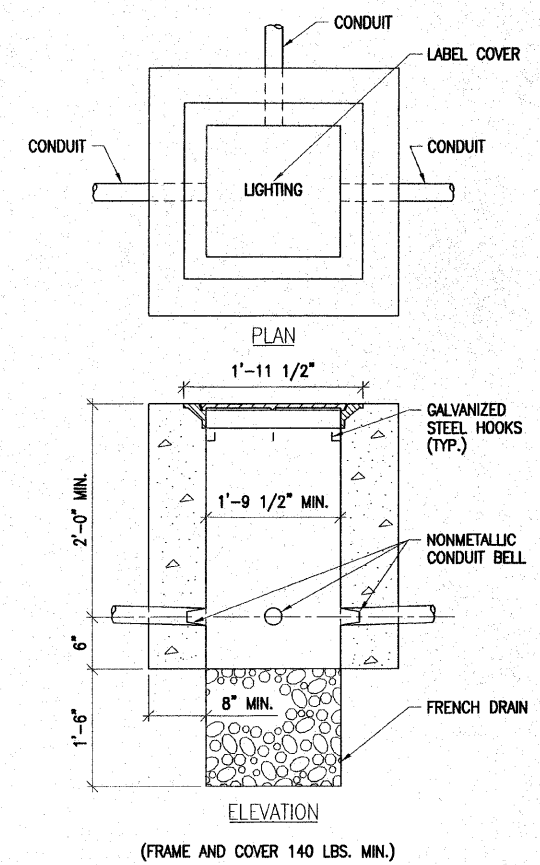
**SERVICE POLE DETAIL**  
SCALE: NONE



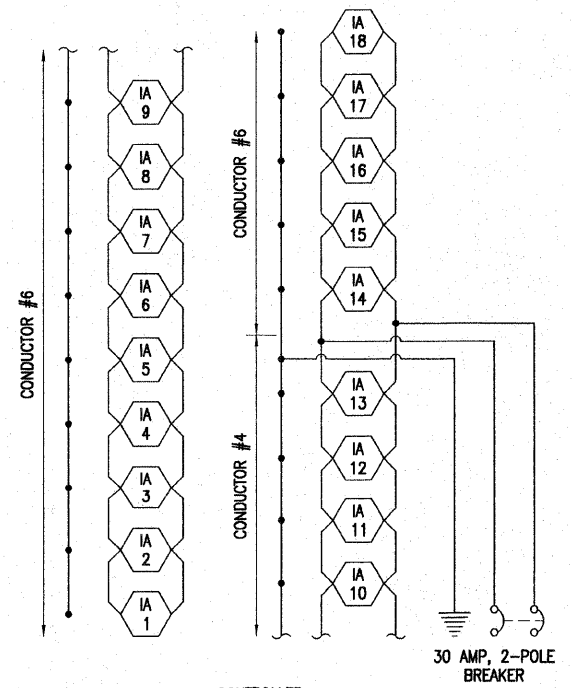
**CONTROL INSTALLATION DETAIL**  
SCALE: NONE



**FOUNDATION DETAIL**  
SCALE: NONE

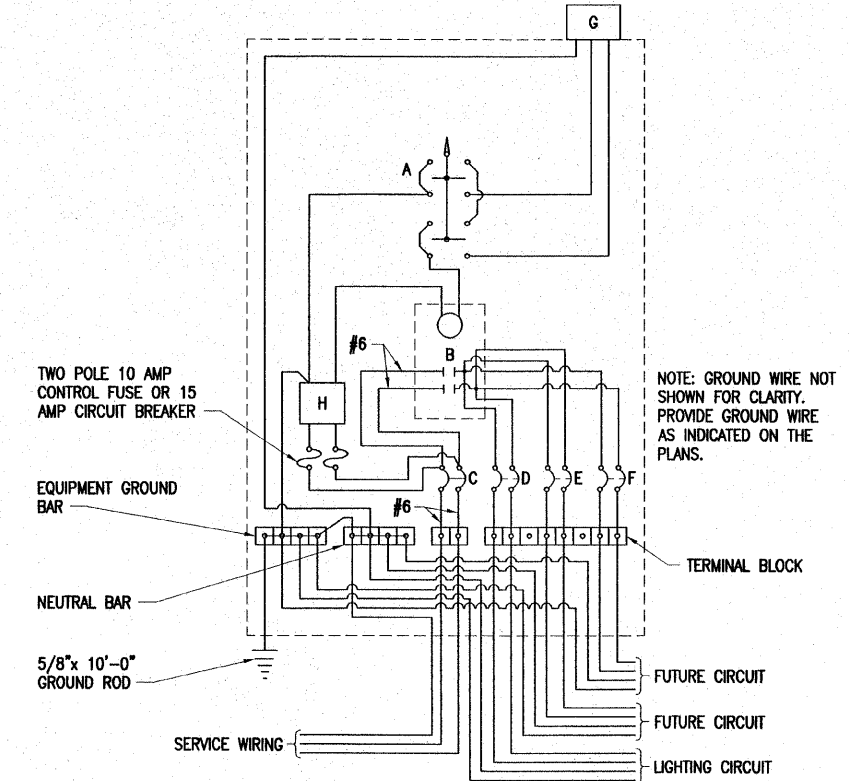


**CONCRETE HANDHOLE**  
SCALE: NONE



**CIRCUIT DIAGRAM**  
SCALE: NONE

- A SELECTOR SWITCH - HAND/OFF/AUTO
- B 2 POLE, 60 AMP CONTACTOR, ELEC. OPER., ELEC. HELD
- C 2 POLE, 60 AMP SERVICE DISCONNECT
- D,E,F 2 POLE, 30 AMP CIRCUIT BREAKERS
- G PHOTOCELL WITH INTEGRAL SURGE ARRESTOR
- H CONTROL TRANSFORMER 480-120V



LOCATE SERVICE POLE AND CONTROL INSTALLATION ADJACENT TO R.O.W. LINE WITH A MINIMUM DISTANCE OF 30' FROM THE EDGE OF PAVEMENT. EXACT LOCATION SHALL BE ESTABLISHED BY THE ENGINEER.

THE UNDERGROUND SERVICE ENTRANCE WIRING SHALL NOT EXCEED 150'. TOTAL AERIAL AND UNDERGROUND SERVICE BETWEEN THE CONTROL INSTALLATION AND PRIMARY TRANSFORMER SHALL NOT EXCEED 250'.

**480V SERVICE WIRING DIAGRAM**  
SCALE: NONE

INDIANA AVENUE EXTENSION  
CITY OF ALTON, IL  
ROADWAY LIGHTING  
CONTROLLER DETAILS

LAYOUT PJT	 Hanson Professional Services Inc. 1525 South Sixth Street Springfield, Illinois 62703-2896 ILLINOIS LICENSED PROFESSIONAL SERVICES CORPORATION #184-001084	JOB NO. 95510081
DRAWN ANC		DATE 08-16-06
REVIEWED PJT		

L-5

S:\LAND PROJECTS\ALTON INDIANA PH III 4063651\DWG\HANSON\LE-502.DWG